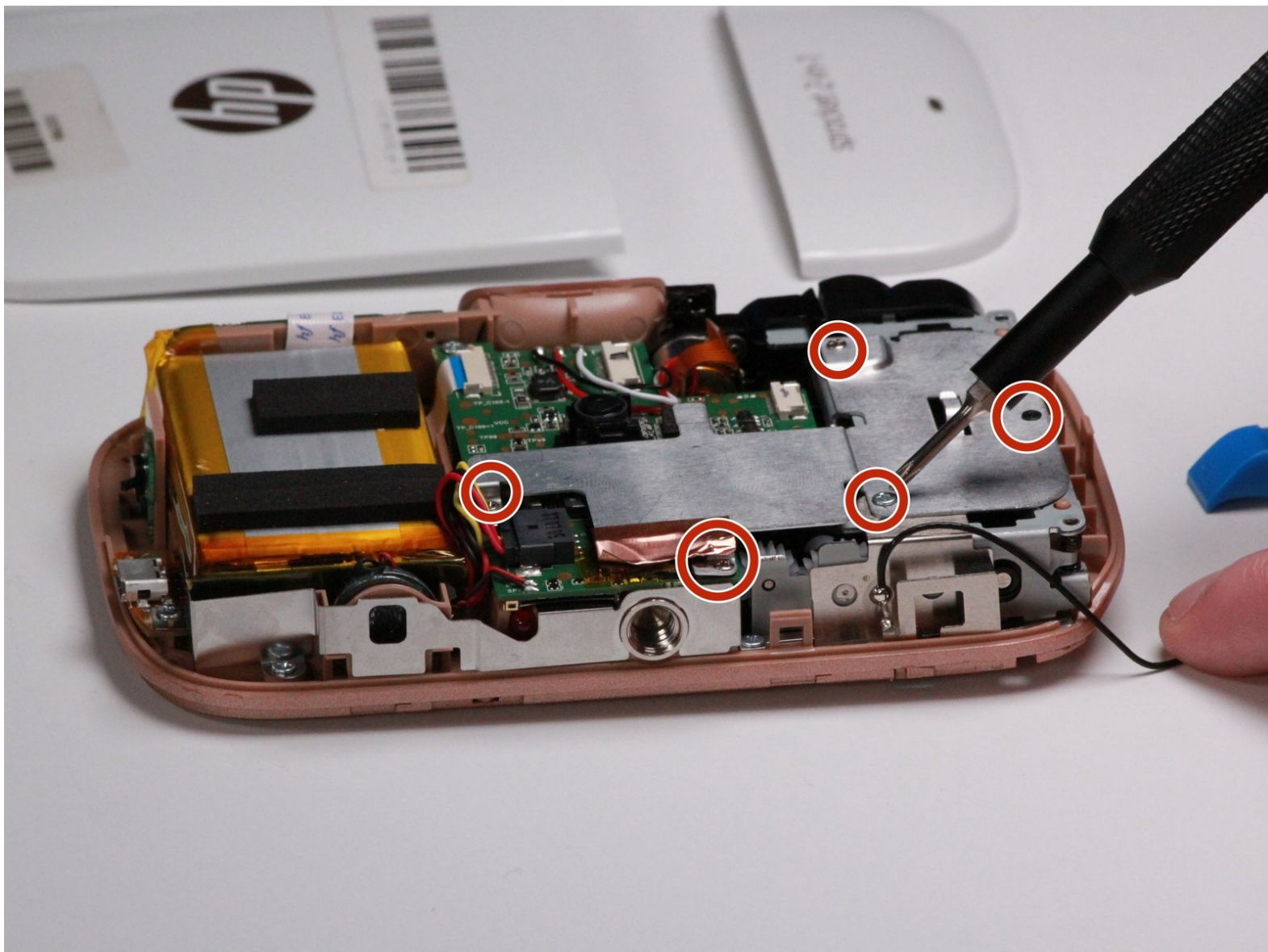




HP Sprocket 2-in-1 Camera Lens Assembly Replacement

This guide assists in the removal of the HP Sprocket 2-in-1 camera assembly.

Written By: Paulo Warren



INTRODUCTION

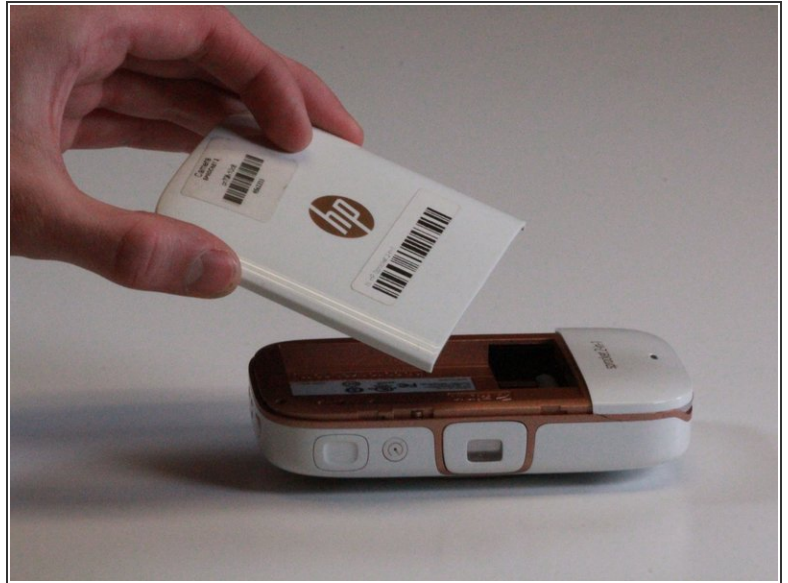
This guide will showcase the steps necessary to remove the HP Sprocket 2-in-1 camera assembly in case of a fault. Be careful when doing so in a dusty environment as dust can impact image quality after the reinstalling a new lens. Furthermore, be sure to complete this guide in a well-lit environment to avoid potential issues that can arise when handling very small screws.



TOOLS:

- [J00 JIS Screwdriver](#) (1)
 - [Jimmy](#) (1)
 - [iFixit Opening Tools](#) (1)
-

Step 1 — Outer Casing



- Remove the back cover and any printer paper inside the device.

Step 2



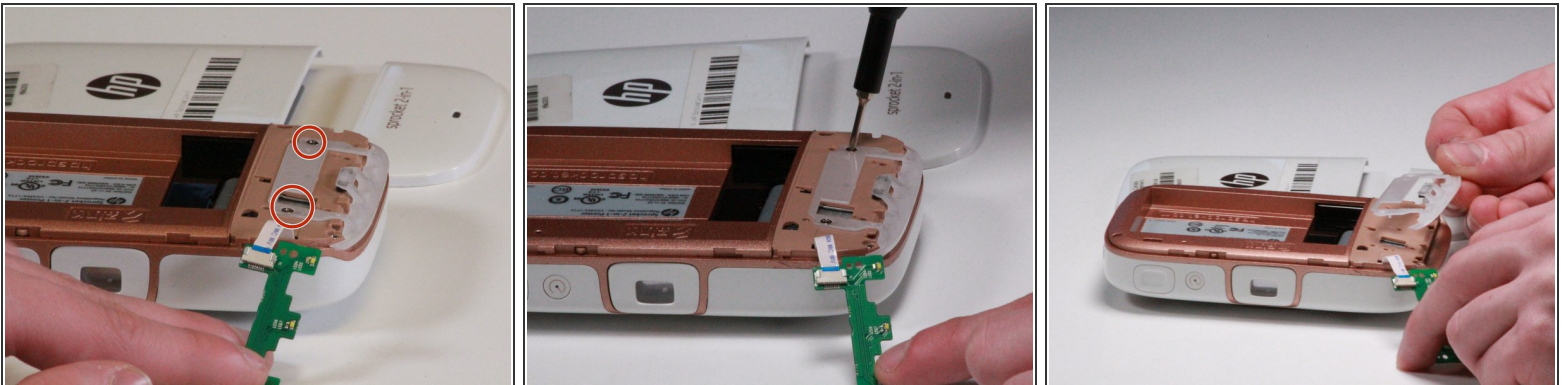
- Using the Jimmy, slowly pry open the outer edge of the remaining white plastic on the back.
- Remove the plastic from the device once it lifts out freely.

Step 3



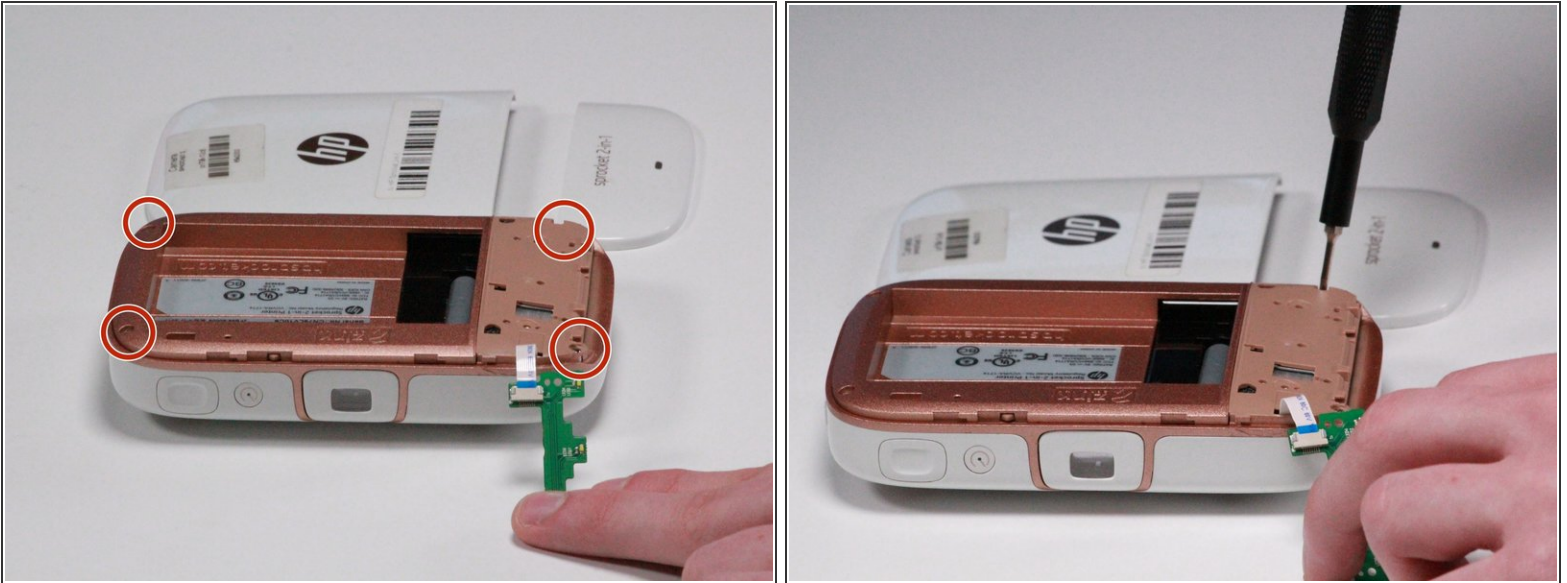
- Remove two 2.5mm JIS #00 located on the small circuit board in view.
 - Use the Jimmy to remove the board after the screws have been removed.
- ⚠ Be careful not to crease or damage the ribbon cable.

Step 4



- Remove two 2.5mm JIS #00 screws from the translucent plastic bracket.
- i** One will be located beneath the ribbon cable.
- Remove the translucent plastic bracket by hand.

Step 5



- Remove four 2.5mm JIS #00 screws from the beige casing.

Step 6

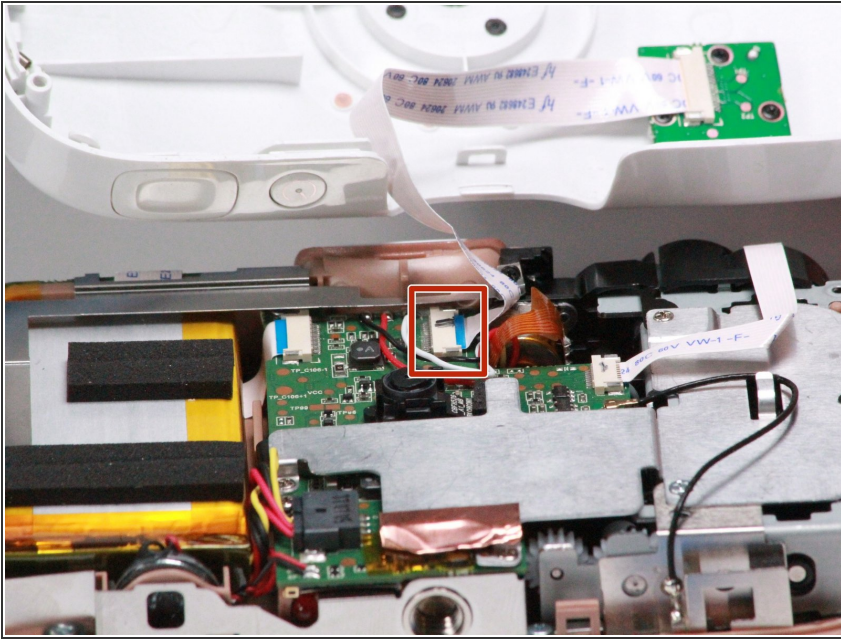


- Use the iFixit opening tool to slowly work between the white and beige casing around the device.
- Flip the device over and separate the white casing from the rest of the device.

⚠ Be careful not to break the plastic while removing the case.

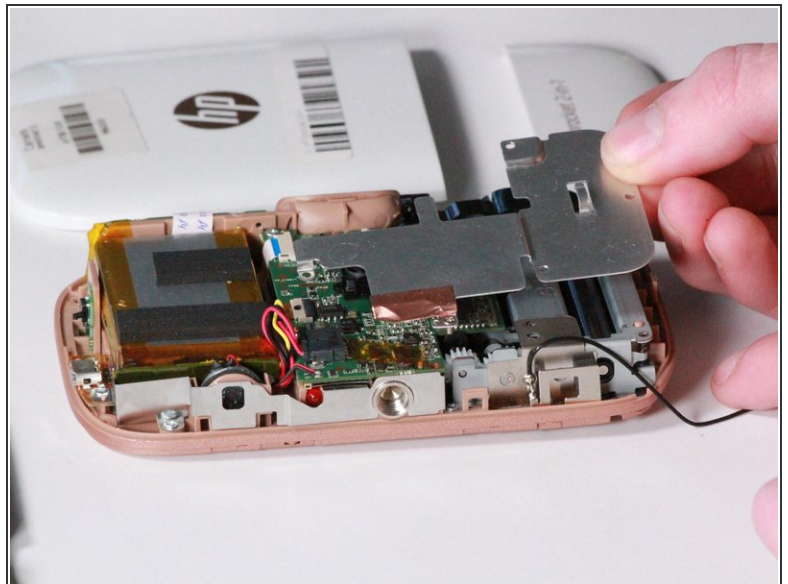
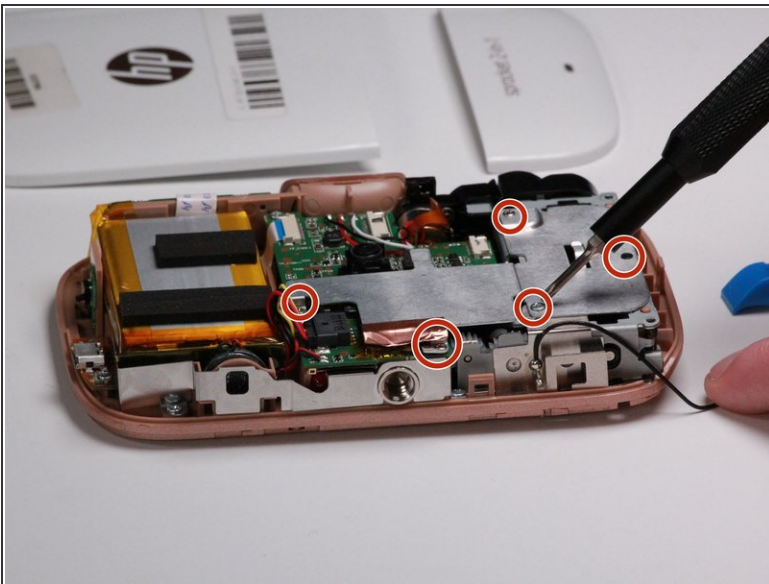
⚠ Gently remove the white casing as there is a ribbon cable connecting the two pieces.

Step 7



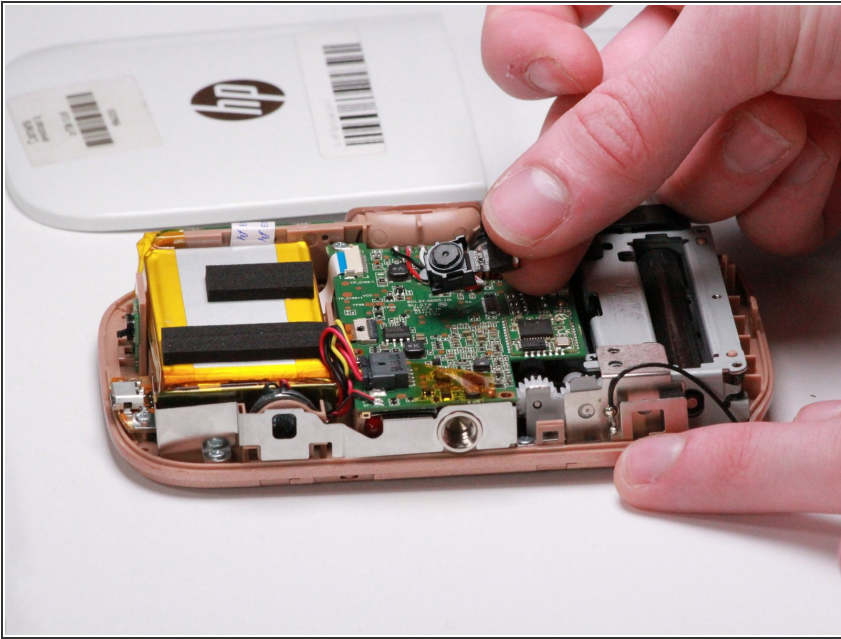
- Carefully remove the ribbon cable that connects the flash to the outer casing.

Step 8 — Camera Lens Assembly



- Use the Japanese Industrial Standard J00 screwdriver to remove five 2.5mm screws.
- ⓘ One of the screws is below bronze tape. Move the tape slightly to get to the screw.
- Remove the metal plate from the casing.

Step 9



- Use an iFixit opening tool to pry the camera free from the device.

To reassemble your device, follow these instructions in reverse order.