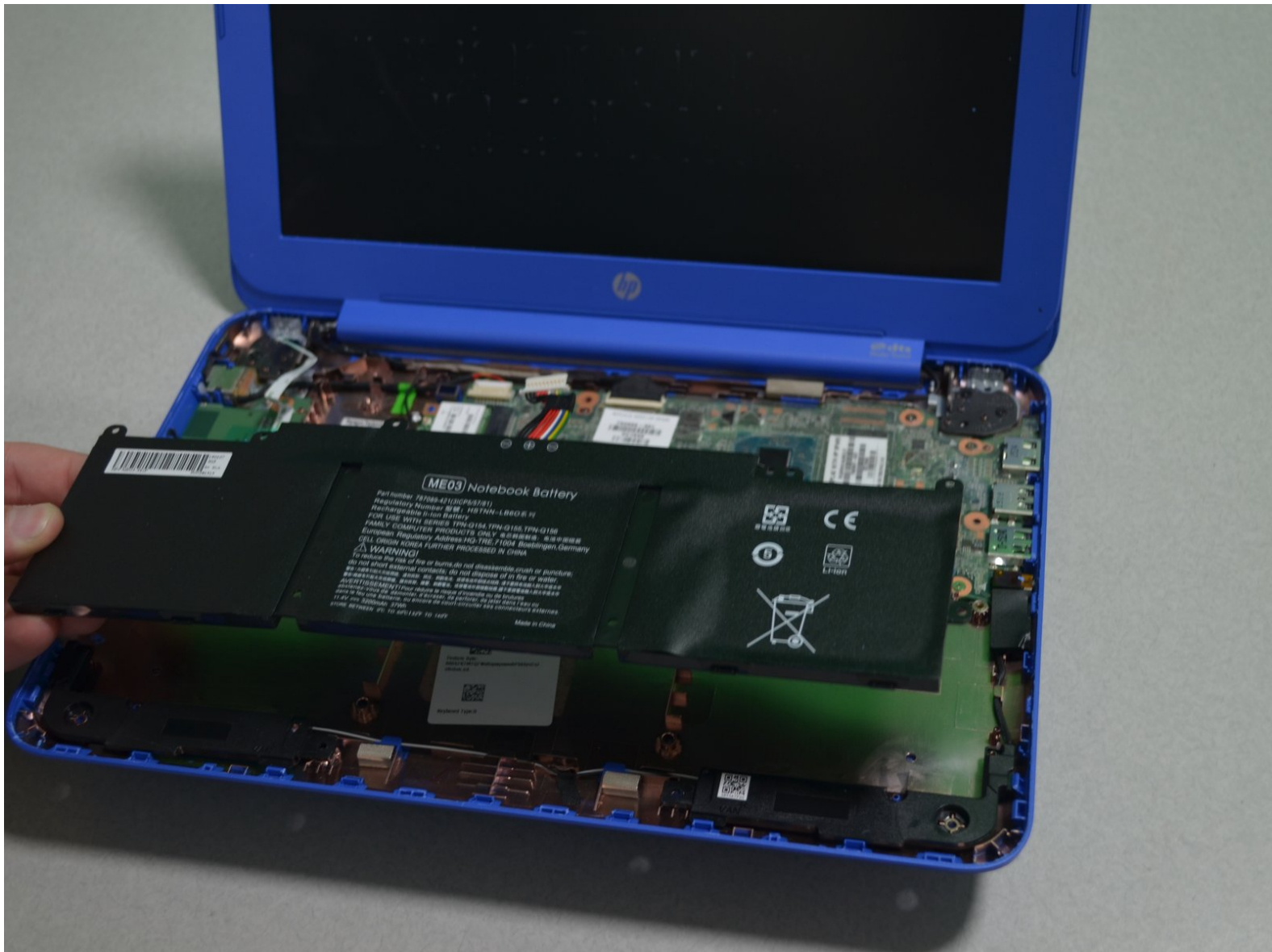




HP Stream 11-d010nr Battery Replacement

Learn how to replace an HP Stream 11-d010nr battery that isn't working.

Written By: Zachary Heisler



INTRODUCTION

If your HP Stream 11-d010nr laptop is showing signs of a faulty battery, such as not holding a charge or not turning on at all, its battery may need to be replaced. This guide will show you the steps necessary to do so.



TOOLS:

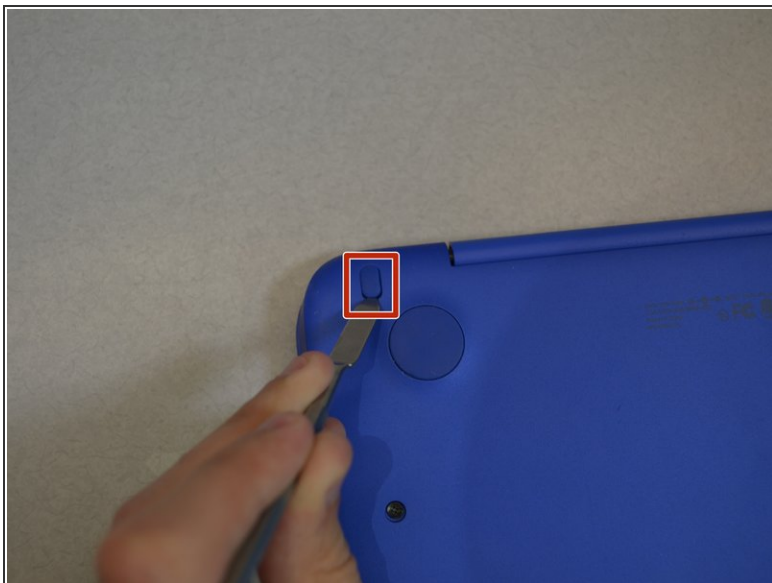
- [Phillips #1 Screwdriver](#) (1)
- [Phillips #000 Screwdriver](#) (1)
- [iFixit Opening Tools](#) (1)
- [Spudger](#) (1)




PARTS:

- [HP ME03XL Replacement Laptop Battery](#) (1)

Step 1 — Keyboard



 Unplug and turn off the HP Stream 11 before disassembling the device.

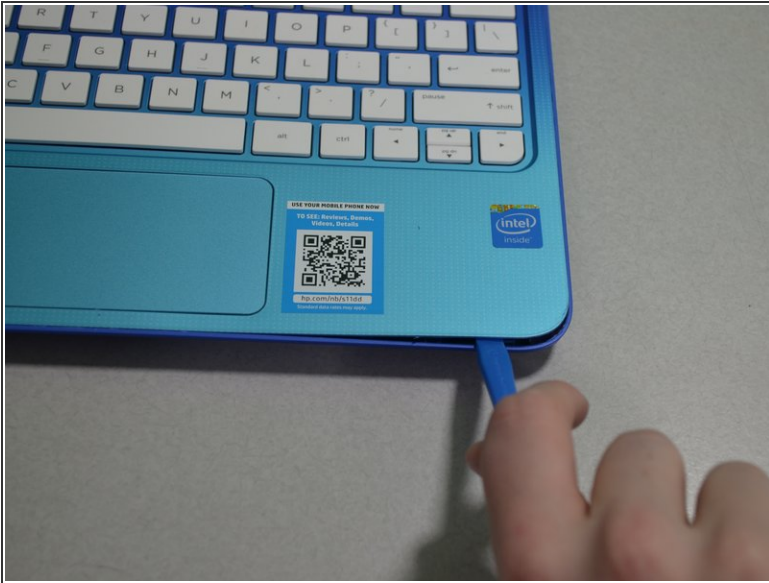
- Pry off the two elliptical rubber inserts (one in each corner).
- Pry off the two circular rubber inserts below the removed elliptical inserts (one in each corner).

Step 2



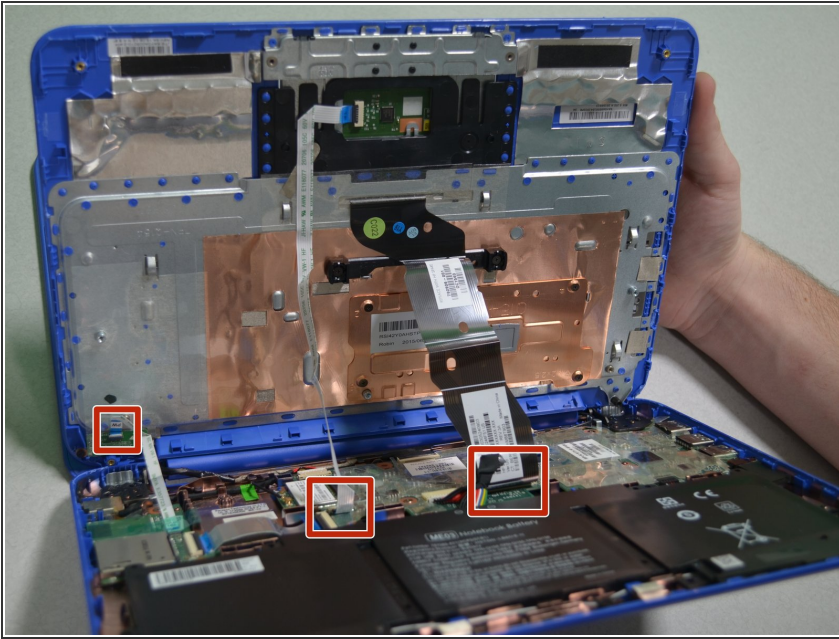
- Remove the eleven 5.6 mm Phillips #1 screws.

Step 3



- Using an iFixit opening tool, pry open the case to separate the keyboard from the main body.
- ⓘ HP Stream 11s tend to be really difficult to open. If your device is not opening with a standard iFixit opening tool, use a nylon spudger, then the metal spudger, or a metal Jimmy as the last resort.
- ⚠ When using the metal spudger or Jimmy, be careful not to bring these tools into contact with any electronic components of the device as this can damage the device.

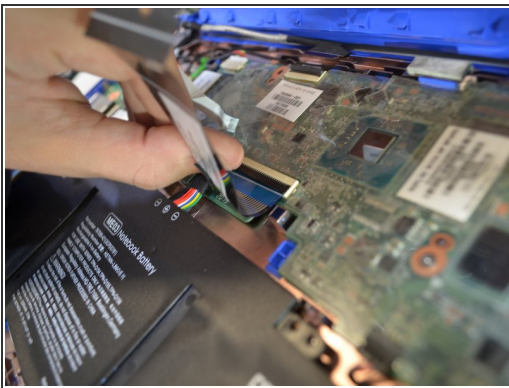
Step 4



⚠ Slowly lift the keyboard as there are multiple ribbon cables that could easily be damaged if lifted with force.

- Carefully lift the keyboard and locate the three ribbon cables connecting the main body of the laptop to the keyboard.

Step 5



- Using your fingernail, lift the flaps on the ZIF connectors that are securing the three ribbon cables.
- Carefully disconnect the three ribbon cables.

Step 6



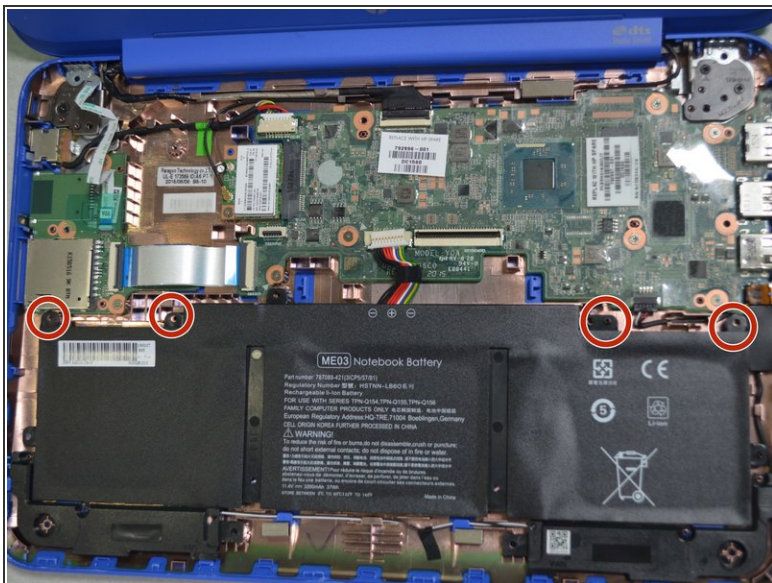
- Lift the keyboard out of the laptop to remove it from the device.

Step 7 — Battery



- Remove any tape holding the battery connector in place.
- Using your fingers, carefully unplug the battery.

Step 8



- Remove the four 3mm #000 Phillips screws holding the battery in place.
- Carefully lift the battery out of the laptop.

To reassemble your device, follow these instructions in reverse order.