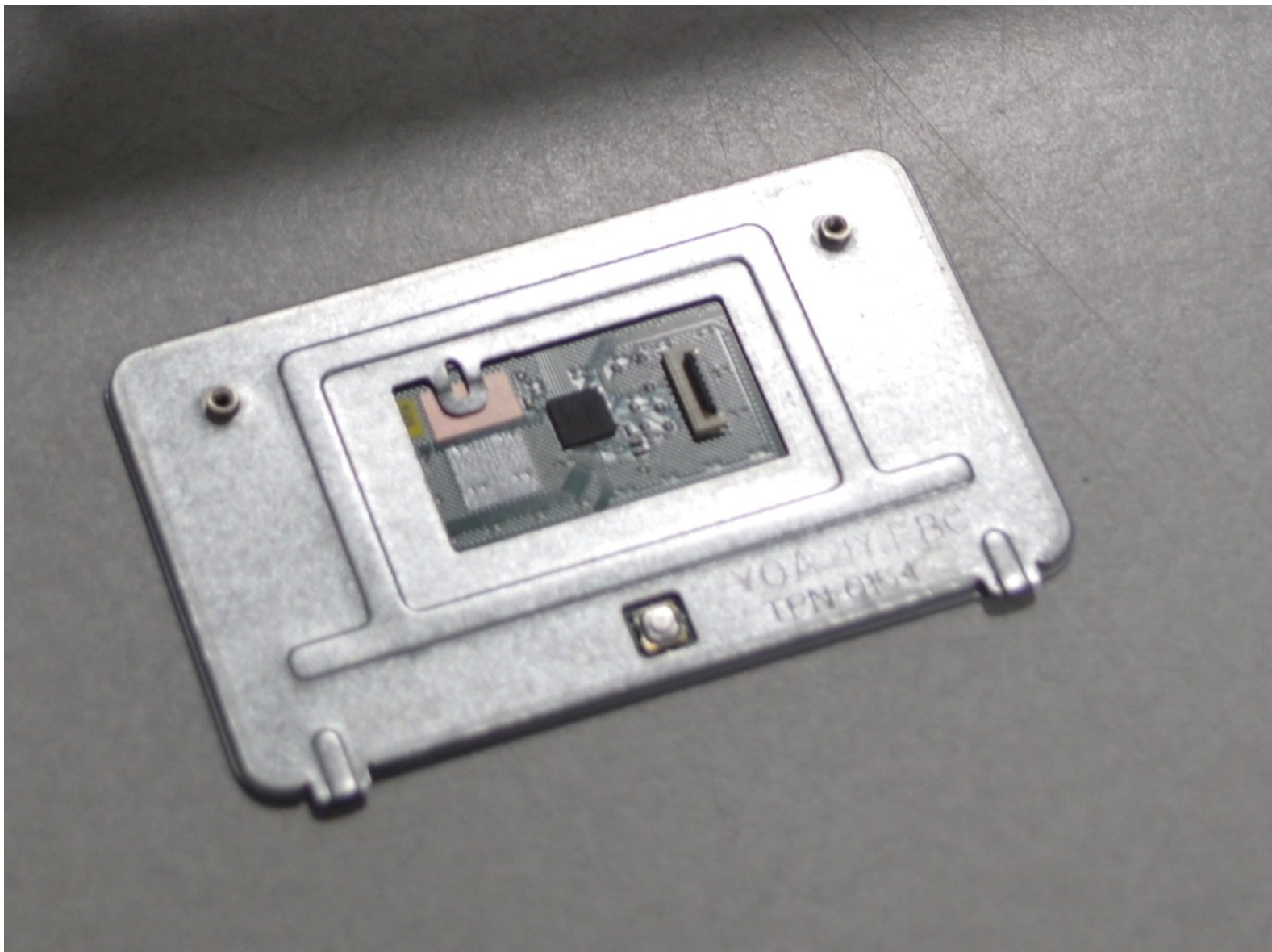




HP Stream 11-d010nr Clickpad Replacement

HP Stream 11-d010nr clickpad is not working and needs to be replaced.

Written By: Josh Corrigan



INTRODUCTION

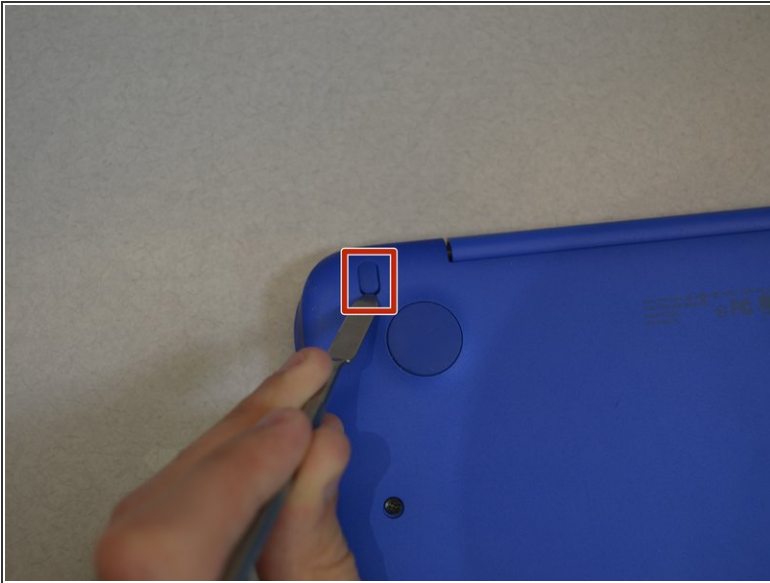
An HP Stream 11-d010nr can develop a faulty clickpad through mechanical or electrical malfunctions. This replacement is fairly straightforward and should only take 5-10 minutes. Unplug and power off your device before you attempt to open the device.




TOOLS:

- [JIS #1](#) (1)
 - [Phillips #000 Screwdriver](#) (1)
 - [iFixit Opening Tools](#) (1)
 - [Metal Spudger](#) (1)
-

Step 1 — Keyboard



 Unplug and turn off the HP Stream 11 before disassembling the device.

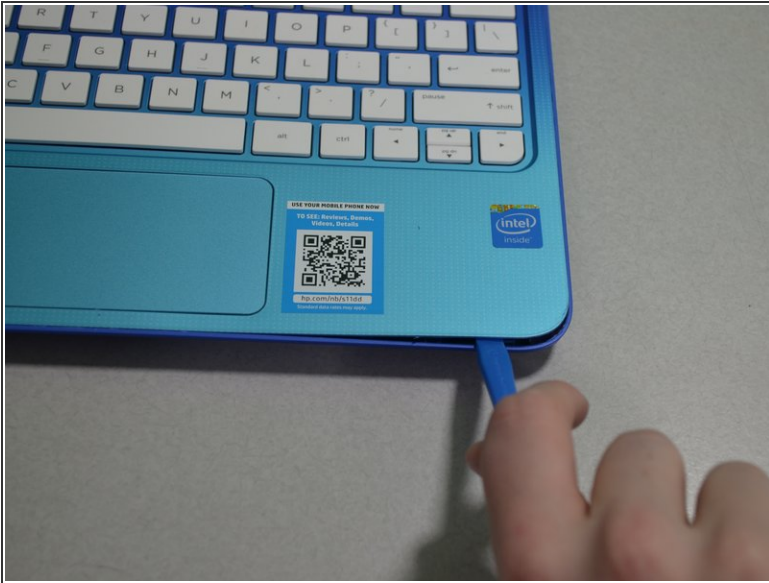
- Pry off the two elliptical rubber inserts (one in each corner).
- Pry off the two circular rubber inserts below the removed elliptical inserts (one in each corner).

Step 2



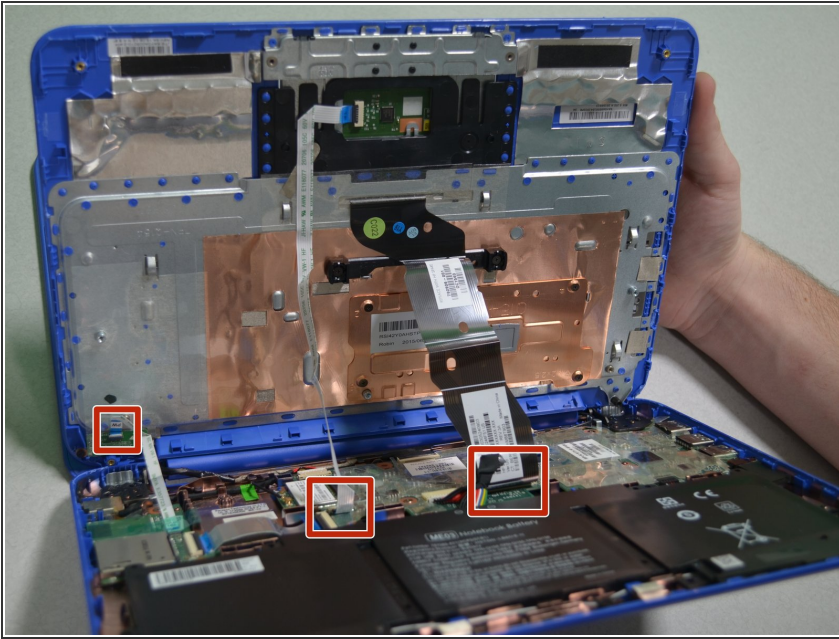
- Remove the eleven 5.6 mm Phillips #1 screws.

Step 3



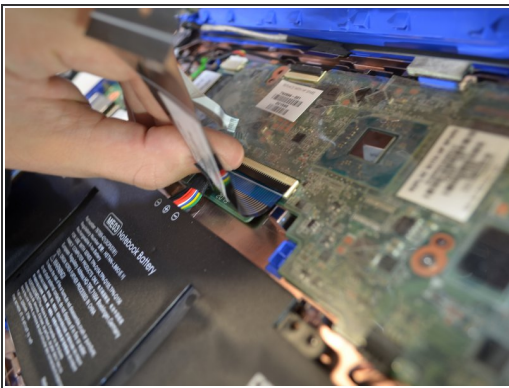
- Using an iFixit opening tool, pry open the case to separate the keyboard from the main body.
- ⓘ HP Stream 11s tend to be really difficult to open. If your device is not opening with a standard iFixit opening tool, use a nylon spudger, then the metal spudger, or a metal Jimmy as the last resort.
- ⚠ When using the metal spudger or Jimmy, be careful not to bring these tools into contact with any electronic components of the device as this can damage the device.

Step 4



- ⚠ Slowly lift the keyboard as there are multiple ribbon cables that could easily be damaged if lifted with force.
- Carefully lift the keyboard and locate the three ribbon cables connecting the main body of the laptop to the keyboard.

Step 5



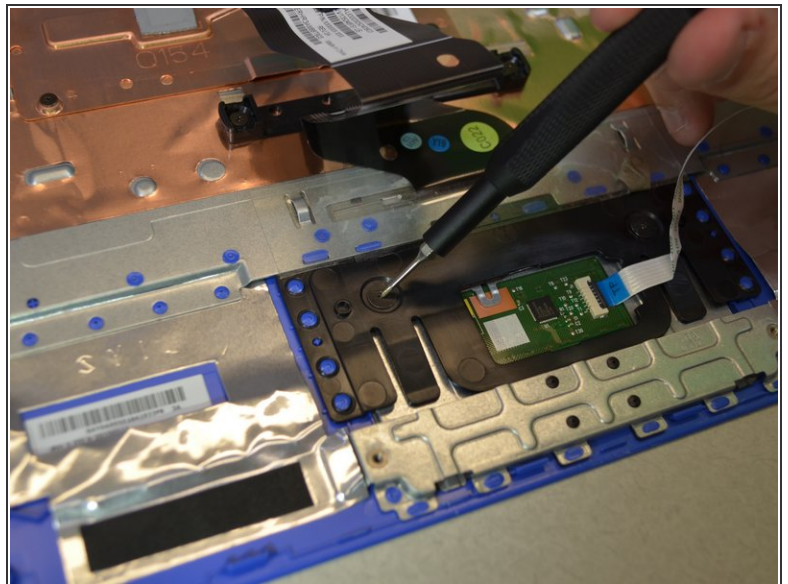
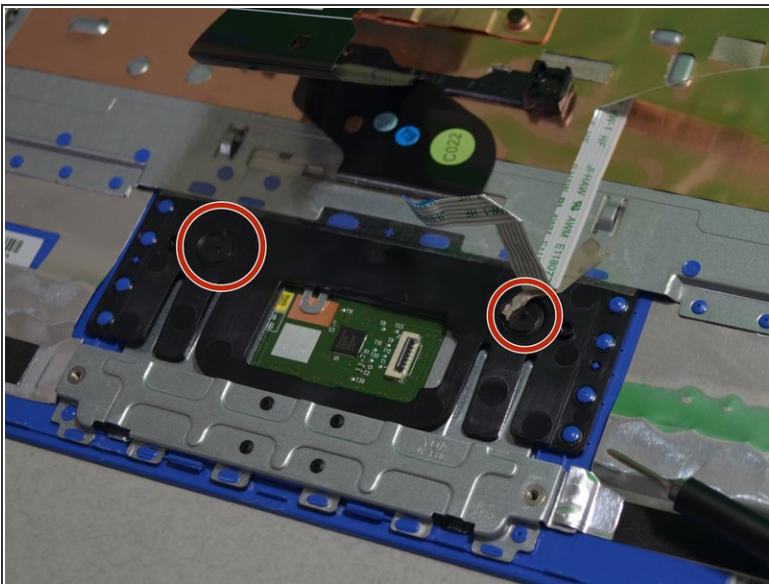
- Using your fingernail, lift the flaps on the ZIF connectors that are securing the three ribbon cables.
- Carefully disconnect the three ribbon cables.

Step 6



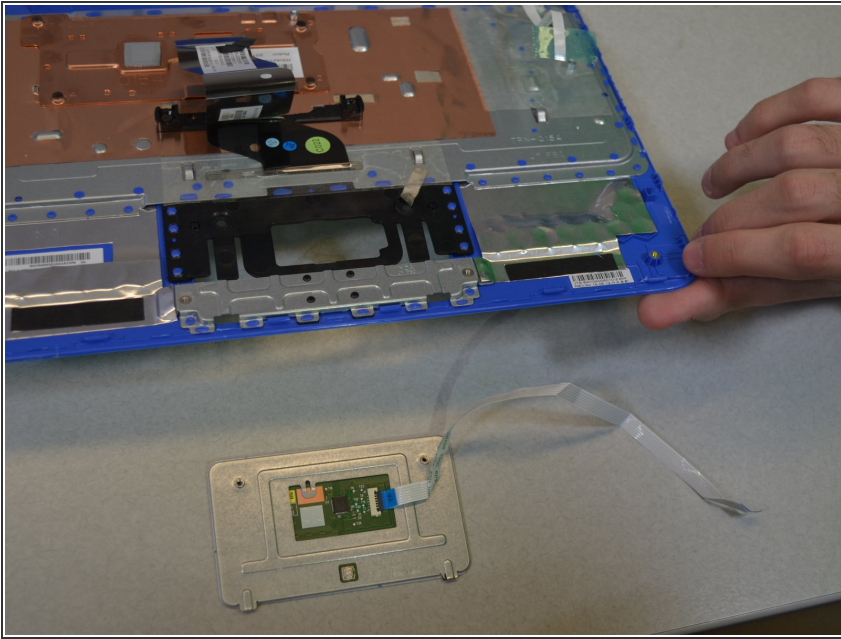
- Lift the keyboard out of the laptop to remove it from the device.

Step 7 — Clickpad



- Remove the two 2mm #000 Phillips screws.

Step 8



- Release the clickpad by lifting the keyboard up.
- ★ When installing the new clickpad, make sure the black tabs go into the laptop.

To reassemble your device, follow these instructions in reverse order.