



# HP Stream 11-d020nr Battery Replacement

This guide will walk you through the process of replacing a faulty or damaged battery in an HP Stream 11 laptop. This should take you about 10-15 minutes.

Written By: Spenser Mason



## INTRODUCTION

If you notice your laptop no longer keeping a charge, you may need to replace the battery. This device is kind of strange because the battery isn't one of the first things you remove. This makes it hazardous because you may accidentally turn on your laptop while taking it apart. So be careful when removing the cover and use caution around the power button to ensure you don't turn it on.



### TOOLS:

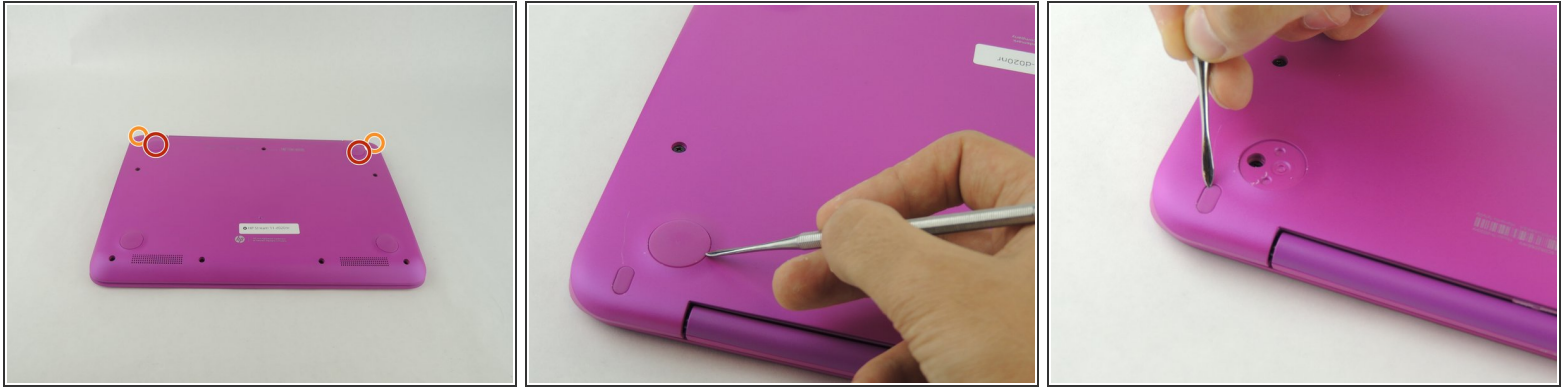
- [Screwdriver](#) (1)
- [Metal Spudger Set](#) (1)
- [Tweezers](#) (1)




### PARTS:

- [HP ME03XL Replacement Laptop Battery](#) (1)

## Step 1 — Lower Case



 Before disassembly, unplug and power off the Stream 11.

- Pry off the two elliptical rubber inserts (one in each corner).
- Pry off the two circular rubber inserts below the removed elliptical inserts (one in each corner).

## Step 2



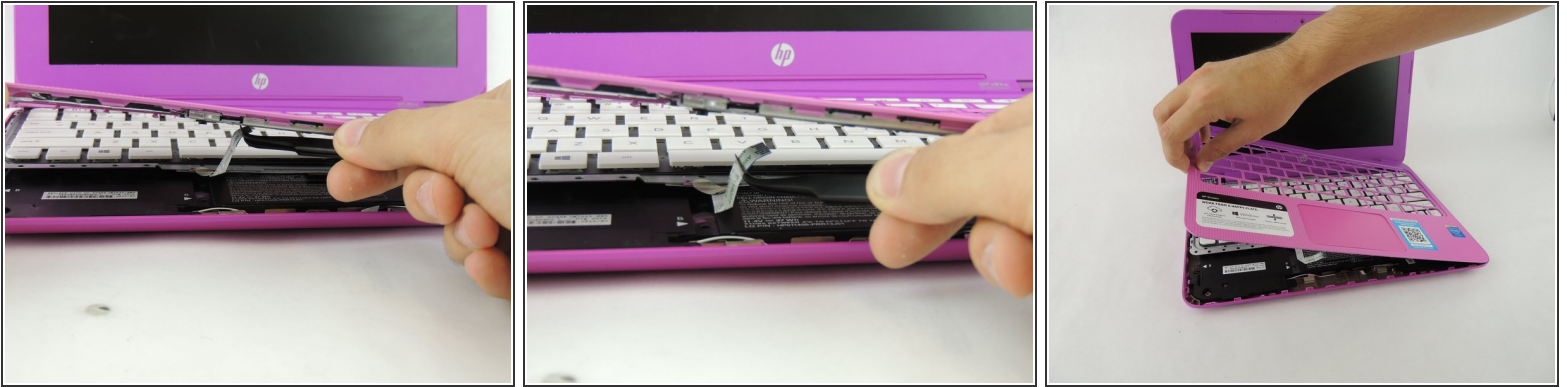
- Remove the eleven 5.6 mm Phillips #00 screws.

## Step 3




- Turn the computer upright and lift the screen.
- Carefully use a spudger to pry the plastic keyboard cover from the base.
  - ⚠ When using the metal spudger, be careful not to press into the components underneath the keyboard cover. If possible, use a standard spudger or plastic opening tool to remove the keyboard cover.
- Work the spudger around the cover to release the clips attaching the cover to the base.
- ⓘ Be patient when removing the cover, as there are many clips and it may take some time.

## Step 4



- Disconnect the cable connecting the ClickPad to the base.
- Remove the plastic keyboard cover.

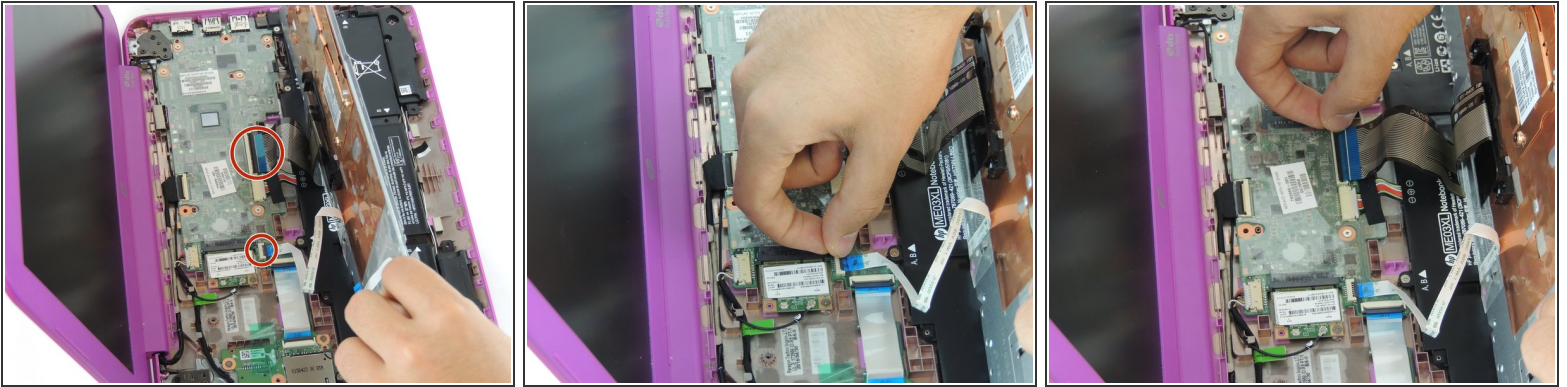
 The cover is attached to the ClickPad by a cable. Be careful not to lift the cover too far so you do not damage this cable.

## Step 5 — Keyboard



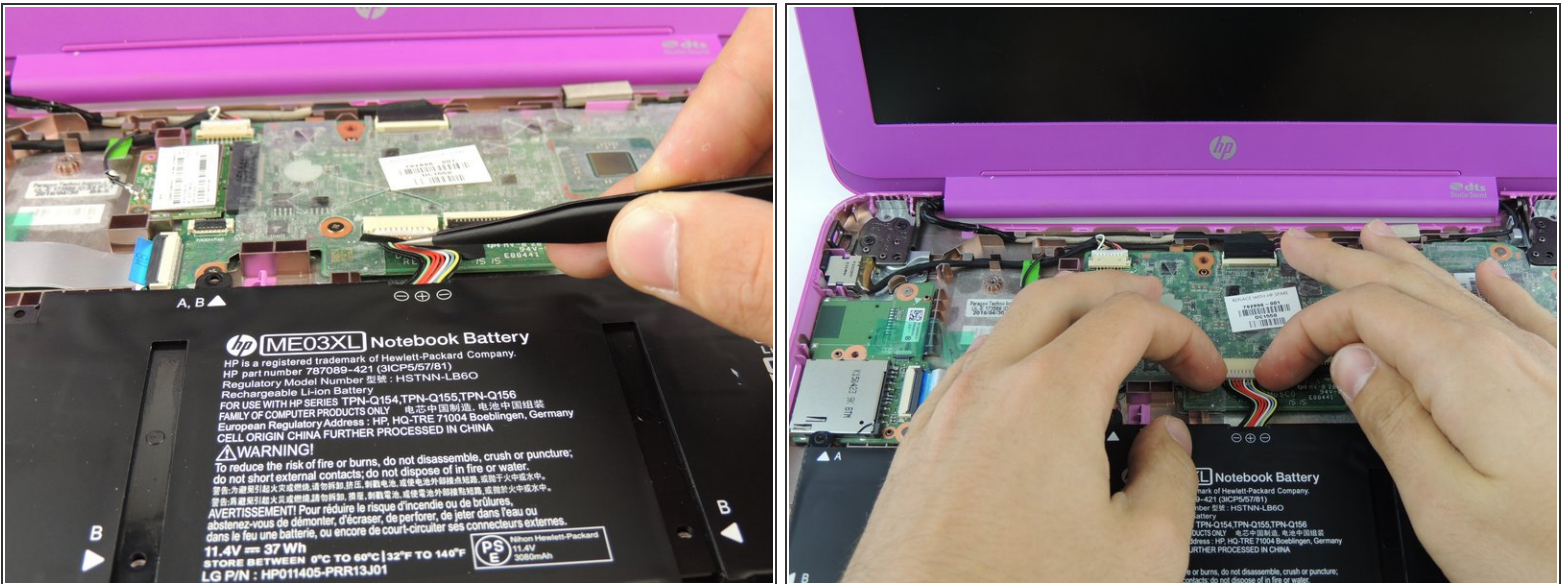
- Tilt the top of the keyboard plate up until you separate it from the base.
- Tilt the keyboard toward you slowly but **do not remove it**, it is still connected with ribbon cables.

## Step 6



- Lift up the retaining flaps on the ZIF connectors securing the two keyboard ribbon cables.
- After disengaging the connectors, gently unplug both ribbon cables.

## Step 7 — Battery



- Remove any tape covering the battery connector.
- Disconnect the battery cable from its socket on the motherboard.

## Step 8



- Unscrew the four 3.3mm Phillips #000 screws.
- Lift the battery out gently.

To reassemble your device, follow these instructions in reverse order.