



# HP Stream 11-d020nr Lower Case Replacement

Replace the lower case of the HP Stream 11-d020nr.

Written By: Ian Somerville



## INTRODUCTION

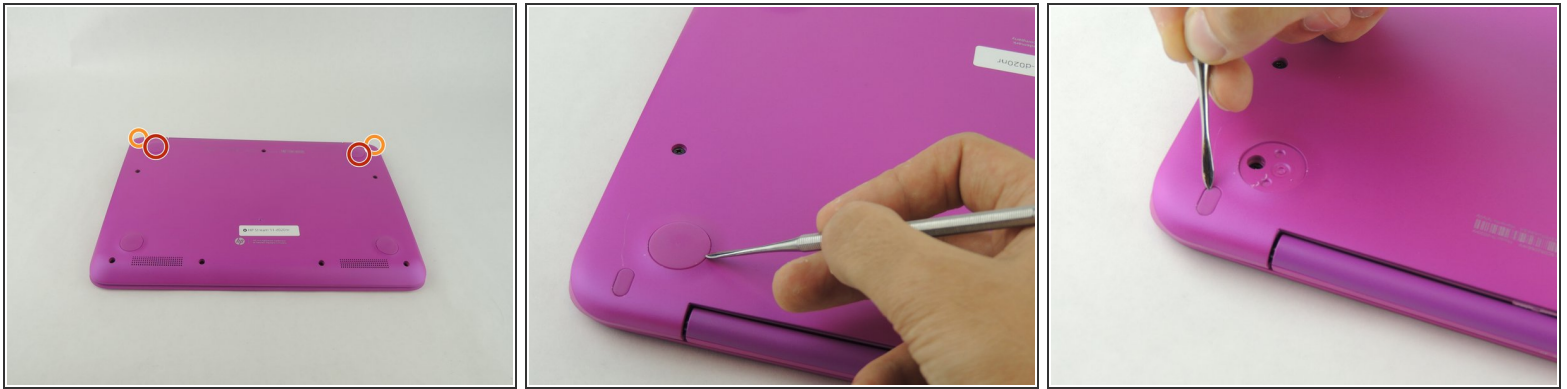
Use this guide to remove the lower case of the HP Stream 11-d020nr. This should take you about 5-10 minutes. Use caution when taking the cover off of the laptop. The process requires a significant amount of force, and it can be easy to damage the internal components.



### TOOLS:

- [Metal Spudger Set](#) (1)
  - [Screwdriver](#) (1)
  - [Spudger](#) (1)
  - [iFixit Opening Tools](#) (1)
-

## Step 1 — Lower Case



**i** Before disassembly, unplug and power off the Stream 11.

- Pry off the two elliptical rubber inserts (one in each corner).
- Pry off the two circular rubber inserts below the removed elliptical inserts (one in each corner).

## Step 2



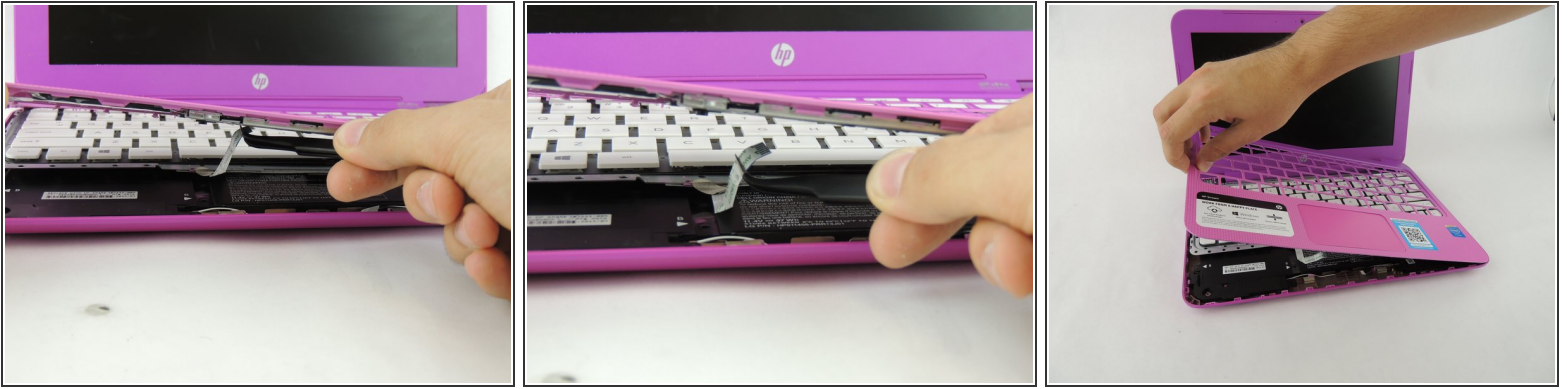
- Remove the eleven 5.6 mm Phillips #00 screws.

## Step 3




- Turn the computer upright and lift the screen.
- Carefully use a spudger to pry the plastic keyboard cover from the base.
  - ⚠ When using the metal spudger, be careful not to press into the components underneath the keyboard cover. If possible, use a standard spudger or plastic opening tool to remove the keyboard cover.
- Work the spudger around the cover to release the clips attaching the cover to the base.
- ⓘ Be patient when removing the cover, as there are many clips and it may take some time.

## Step 4



- Disconnect the cable connecting the ClickPad to the base.
- Remove the plastic keyboard cover.

 The cover is attached to the ClickPad by a cable. Be careful not to lift the cover too far so you do not damage this cable.

To reassemble your device, follow these instructions in reverse order.