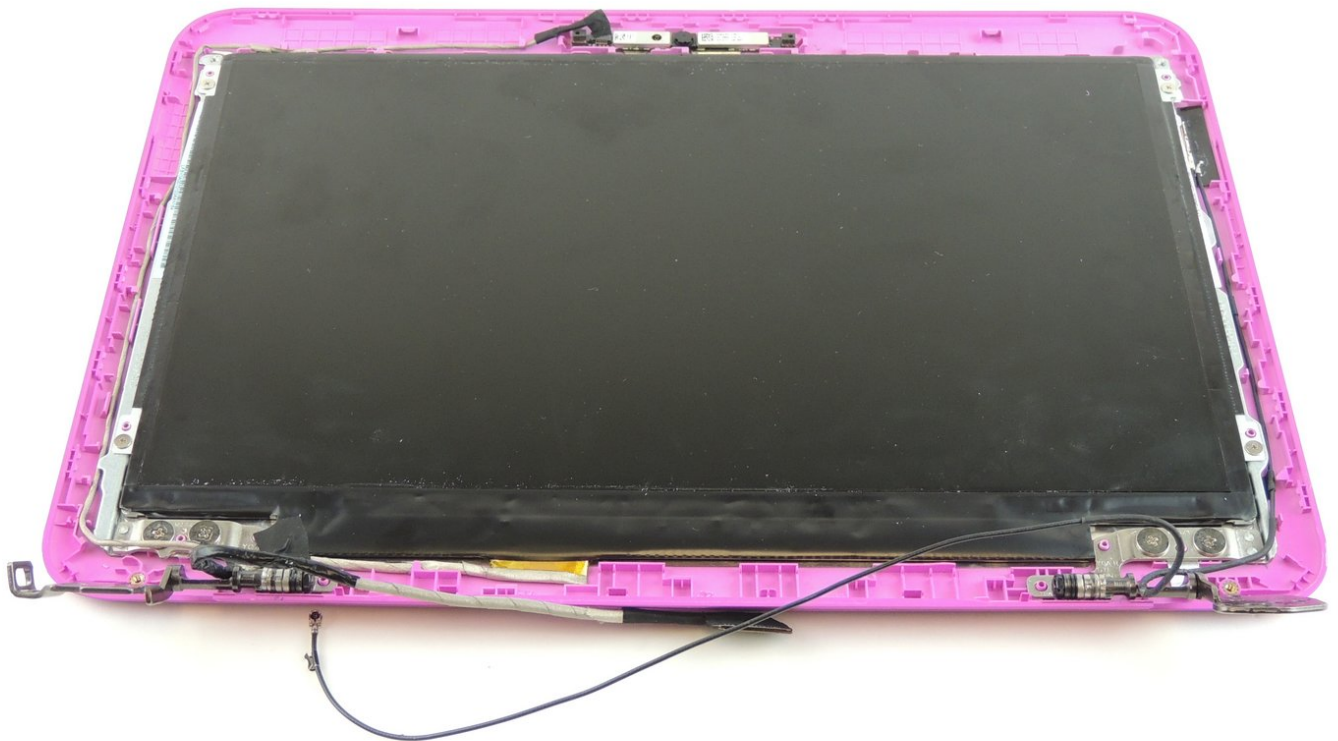




# HP Stream 11-d020nr Screen Replacement

Replace a faulty or damaged screen in an HP Stream 11-d020nr laptop.

Written By: Spenser Mason



## INTRODUCTION

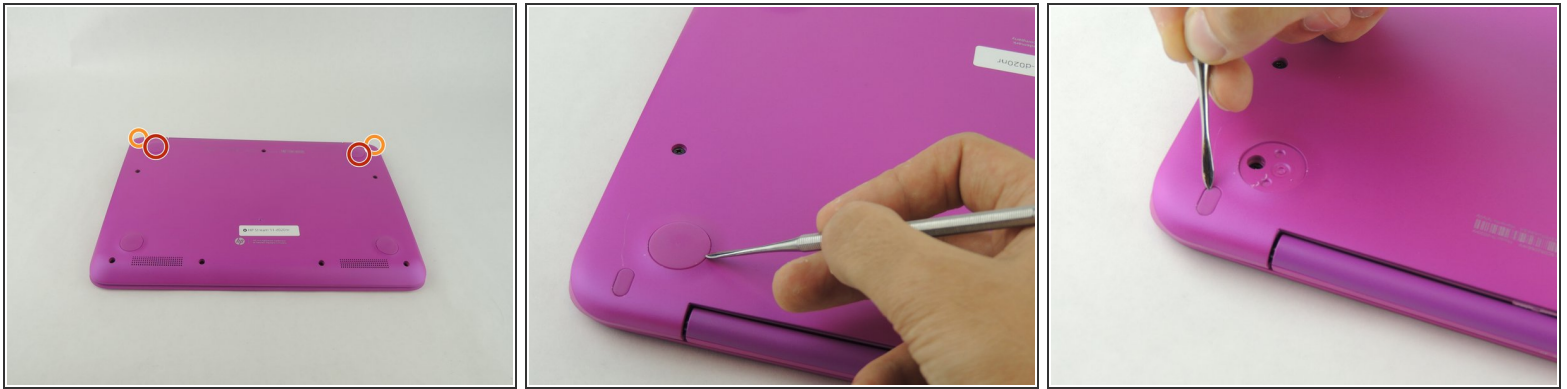
This guide will walk you through the process of replacing a faulty or damaged screen in an HP Stream 11 laptop. This should take you about 10-15 minutes. There are hidden screws under plastic covers that inhibit your ability to remove the screen and could damage your screen. Once these screws are removed it is fairly simple to remove your screen.



### TOOLS:

- [Spudger](#) (1)
- [iFixit Opening Tools](#) (1)
- [Metal Spudger Set](#) (1)
- [Screwdriver](#) (1)
- [Tweezers](#) (1)

## Step 1 — Lower Case



**i** Before disassembly, unplug and power off the Stream 11.

- Pry off the two elliptical rubber inserts (one in each corner).
- Pry off the two circular rubber inserts below the removed elliptical inserts (one in each corner).

## Step 2



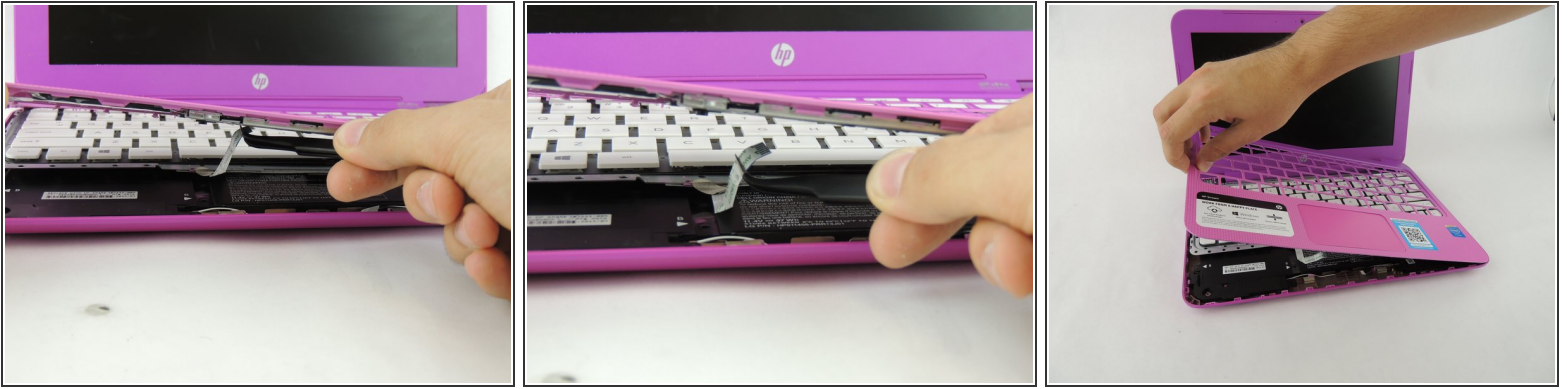
- Remove the eleven 5.6 mm Phillips #00 screws.

## Step 3




- Turn the computer upright and lift the screen.
- Carefully use a spudger to pry the plastic keyboard cover from the base.
  - ⚠ When using the metal spudger, be careful not to press into the components underneath the keyboard cover. If possible, use a standard spudger or plastic opening tool to remove the keyboard cover.
- Work the spudger around the cover to release the clips attaching the cover to the base.
- ⓘ Be patient when removing the cover, as there are many clips and it may take some time.

## Step 4



- Disconnect the cable connecting the ClickPad to the base.
- Remove the plastic keyboard cover.

 The cover is attached to the ClickPad by a cable. Be careful not to lift the cover too far so you do not damage this cable.

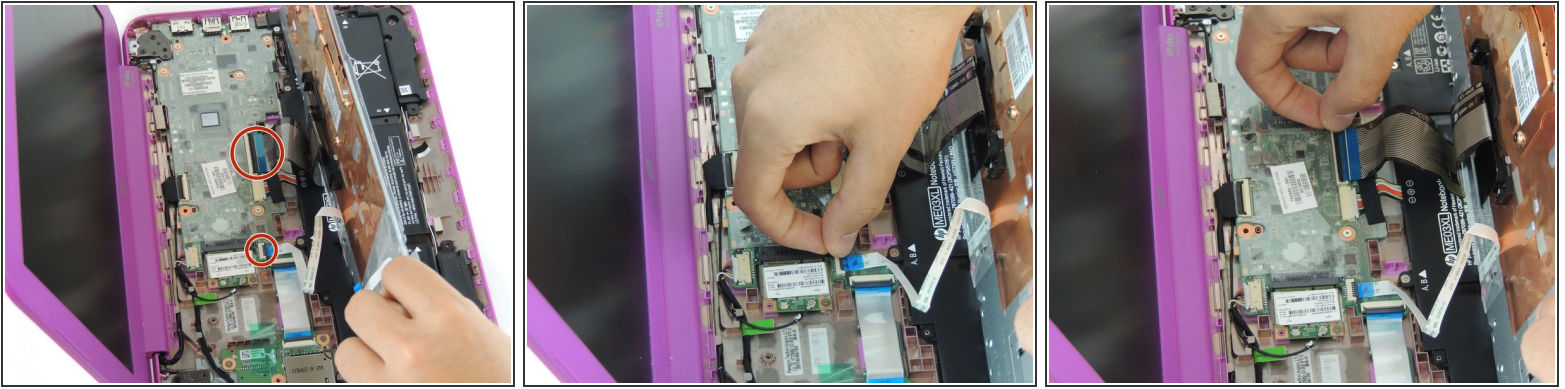
## Step 5 — Keyboard



- Tilt the top of the keyboard plate up until you separate it from the base.
- Tilt the keyboard toward you slowly but **do not remove it**, it is still connected with ribbon cables.

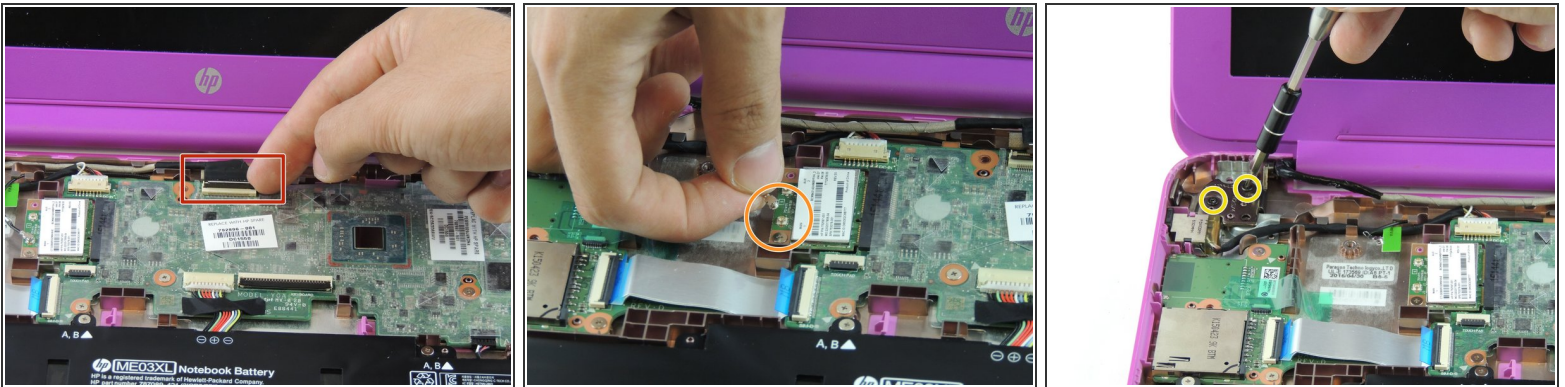


## Step 6



- Lift up the retaining flaps on the ZIF connectors securing the two keyboard ribbon cables.
- After disengaging the connectors, gently unplug both ribbon cables.

## Step 7 — Lid



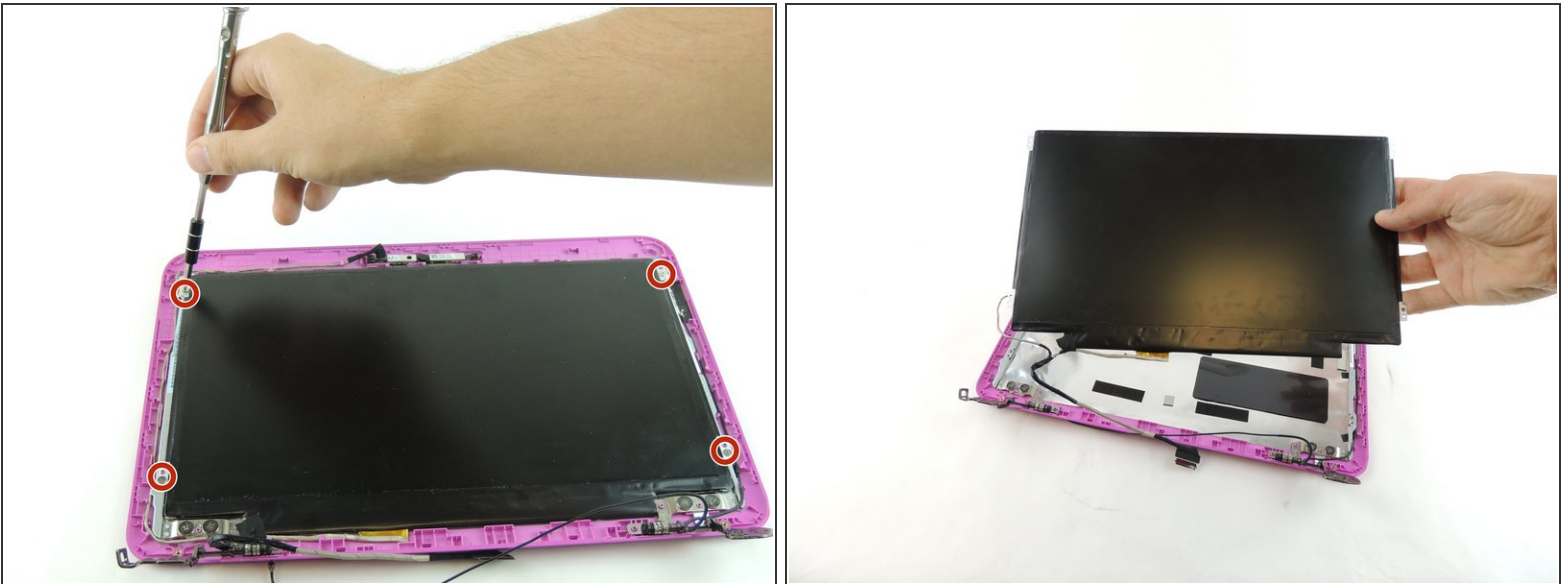
- Lift the black flap on the display cable ZIF connector.
- After lifting the flap, gently pull the display cable from its socket.
- Disconnect the wireless antenna from the wireless card.
- Remove the four 2.2 mm Phillips #00 screws on the left and right sides of the laptop.

## Step 8



- Use tweezers to remove the screw covers from the lid.
- Remove the two 2.2 mm Phillips #000 screws.
- Use a plastic opening tool to disengage the front part of the lid.

## Step 9 — Screen



- Unscrew the four 3.3mm Phillips #000 screws as indicated.
- Lift the screen from the lid carefully.

To reassemble your device, follow these instructions in reverse order.

This document was generated on 2019-10-02 03:25:10 PM (MST).

