



HP Stream 11-y012nr Battery Replacement

This guide will show you how to replace the battery of your HP Stream 11-y012nr.

Written By: Mahar Senan



INTRODUCTION

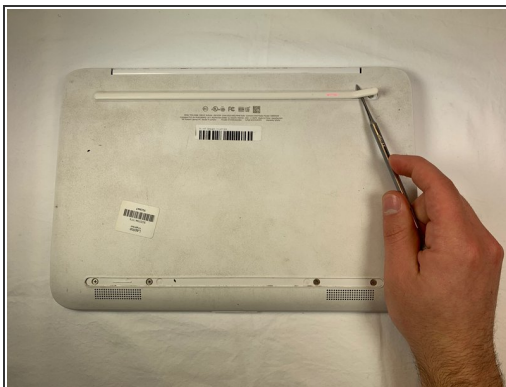
If you are having problems turning on your laptop or keeping a charge you may need to replace the battery of your device. Be careful while following the guide to replace the battery, especially while unscrewing the screws and removing the keyboard. You may accidentally power on the device.




TOOLS:

- [Tweezers](#) (1)
 - [Phillips #00 Screwdriver](#) (1)
 - [Phillips #000 Screwdriver](#) (1)
 - [Spudger](#) (1)
 - [Metal Spudger](#) (1)
-

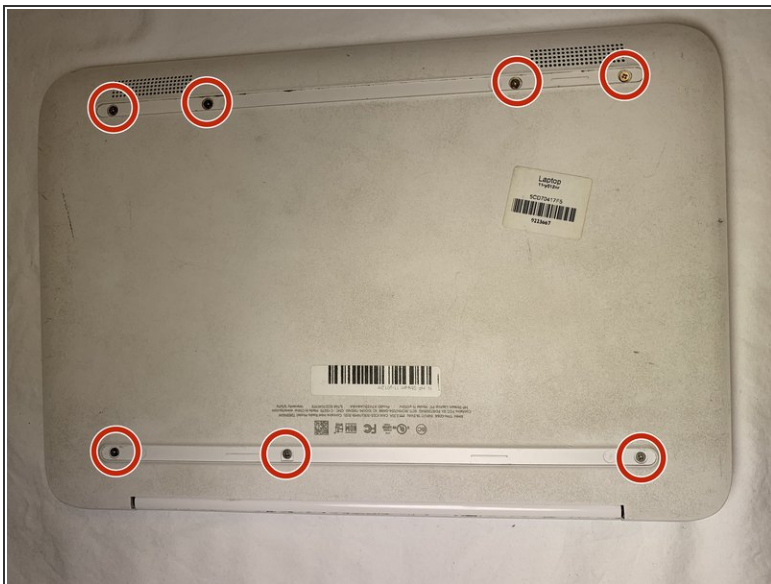
Step 1 — Battery



 Before disassembly, power off the device and unplug it from the charger.

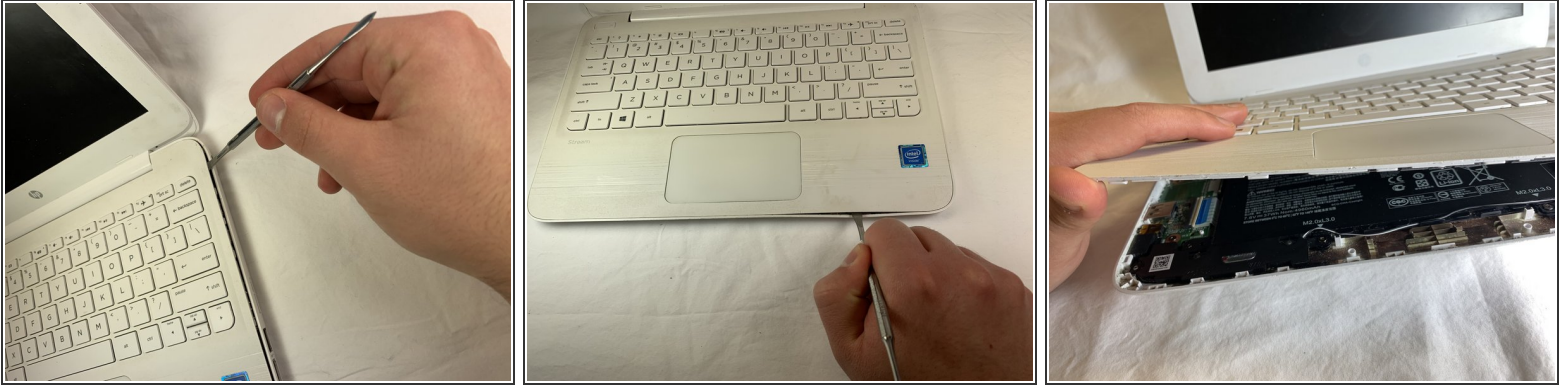
- Turn the laptop over to access the lower case.
- Using a metal spudger, remove the two horizontal screw covers.

Step 2



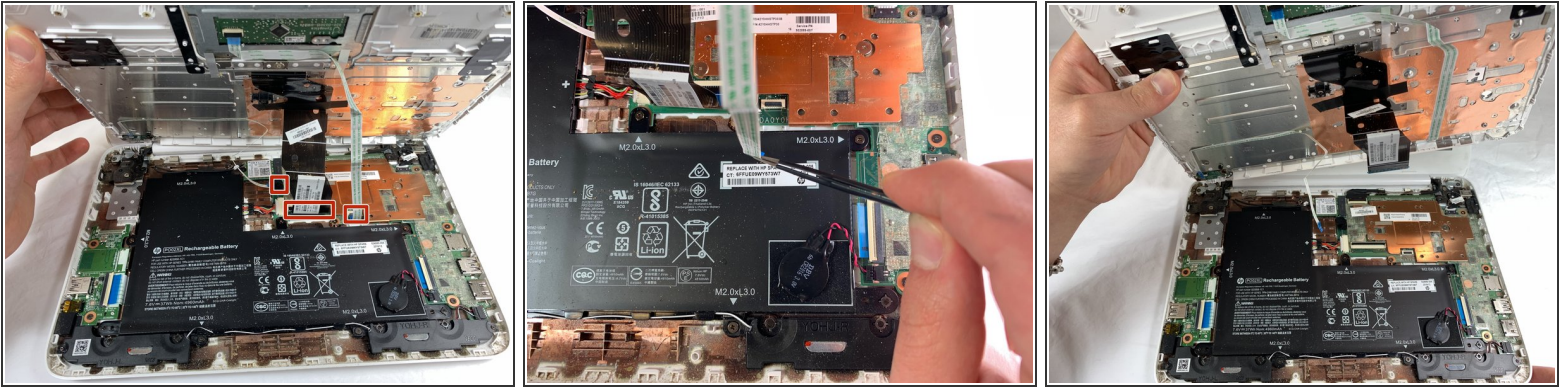
- Remove the seven 5.6 mm Phillips #00 screws.

Step 3



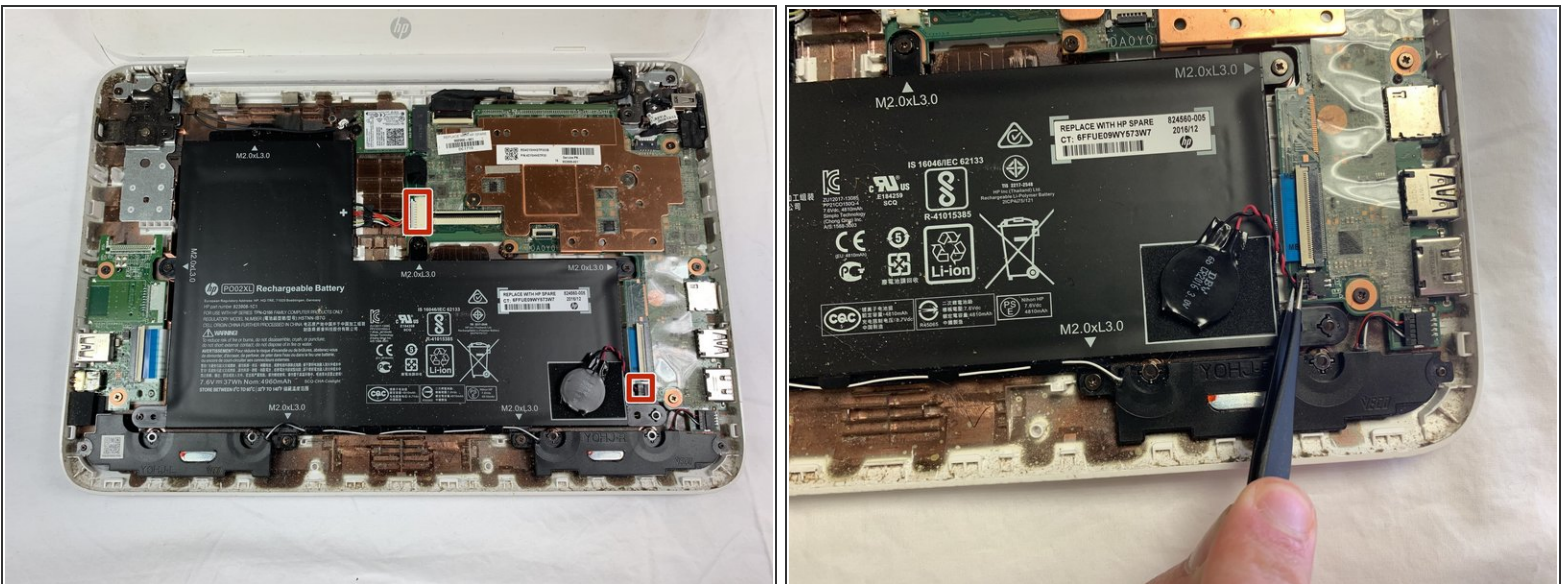
- i** When using the metal spudger, be careful to not press into the components and circuits under the keyboard.
- Turn the laptop upright and lift the screen.
 - Use the metal spudger to carefully pry the plastic keyboard from the base of the laptop.
 - Work the spudger carefully and slowly around the cover to release the clips holding it together. Be patient since there are a lot of clips attaching the laptop base to the keyboard.
 - Gently lift up the keyboard.

Step 4



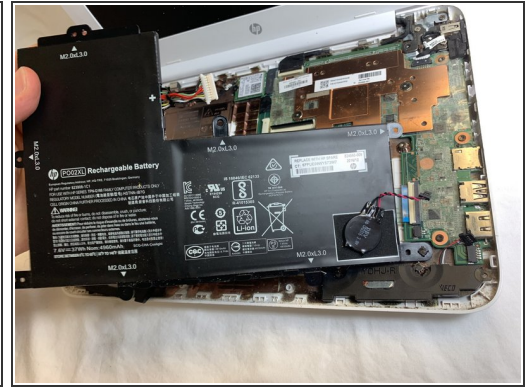
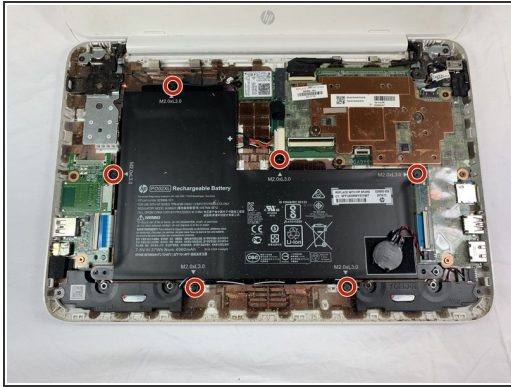
- i The keyboard is attached by three cables. Be careful not to lift the cover too far so you do not damage these cables.
- Using tweezers, unplug the three cables attached to the keyboard. To do so you will find where the wires end (the three red marks). Use tweezers or your fingers to pinch the plastic piece holding the wires, and gently pull the piece out. After that it should disconnect.
- Lift up the plastic keyboard cover.

Step 5



- Using tweezers or a plastic spudger, disconnect the two bundled cable connectors connecting the battery to the motherboard.

Step 6



- Unscrew the seven 3.3mm Phillips #000 screws.
- Gently lift the battery out.

To reassemble your device, follow these instructions in reverse order.