



HP Stream 13-C078nr Motherboard Replacement

How to replace the motherboard in an HP Stream 13-C078nr laptop.

Written By: Jessica



INTRODUCTION

If anyone ever finds themselves in need of a new motherboard module on an HP Stream 13 laptop, but cannot afford the costs of a repair technician, then they will find this guide handy and helpful.

TOOLS:

- [Jimmy](#) (1)
 - [4 mm Bit Extension](#) (1)
 - [Phillips #1 Screwdriver](#) (1)
 - [1.5mm Hex Screwdriver](#) (1)
-

Step 1 — Motherboard



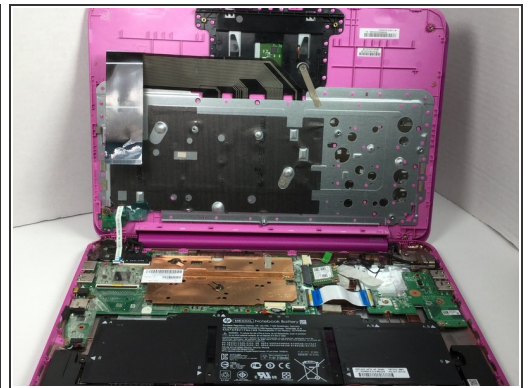
- Place the laptop face-down so that the bottom of the laptop is facing up.

Step 2



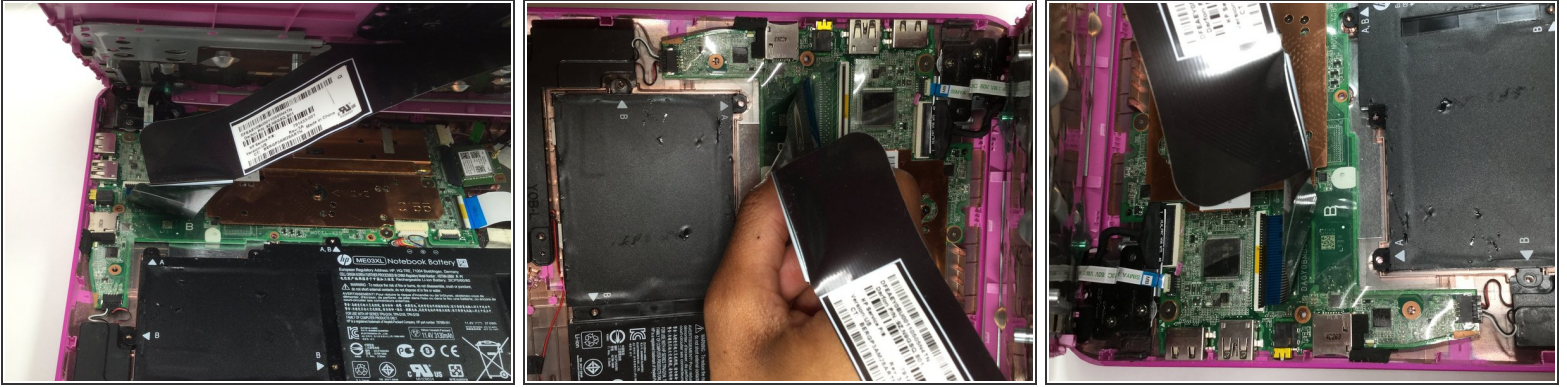
- Remove the screws on the bottom of the laptop, as well as the screws under the rubber bumpers, using a JIS 4mm JO screwdriver. There should be 13 screws total.

Step 3



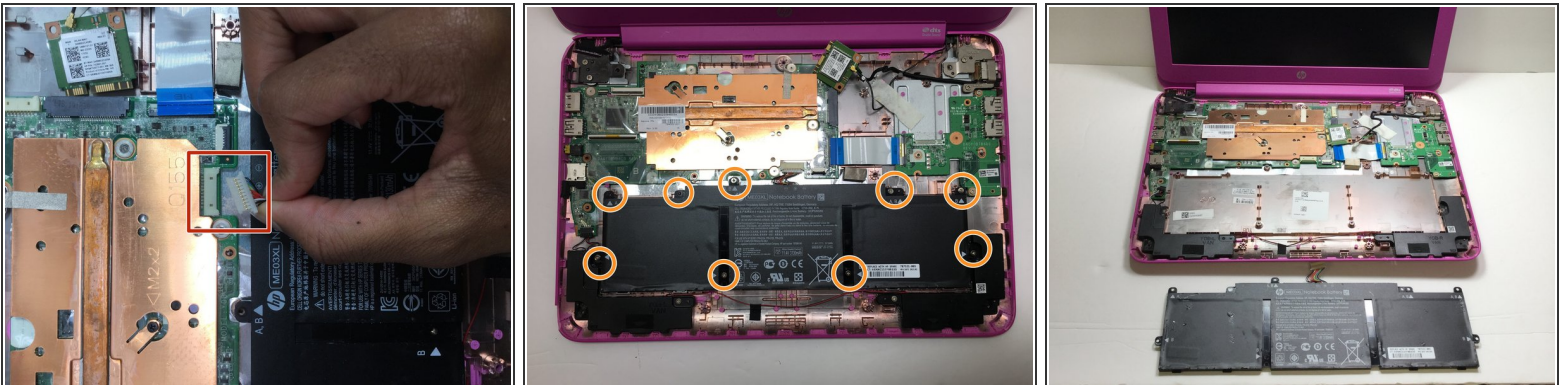
- Flip the laptop back up so that the HP logo is facing up. Open the laptop so that the screen and keyboard are showing. Insert the jimmy tool to remove the casing around the keyboard/touchpad area. Move the jimmy around the perimeter to loosen the casing. Remove the casing to reveal the guts of the laptop.

Step 4



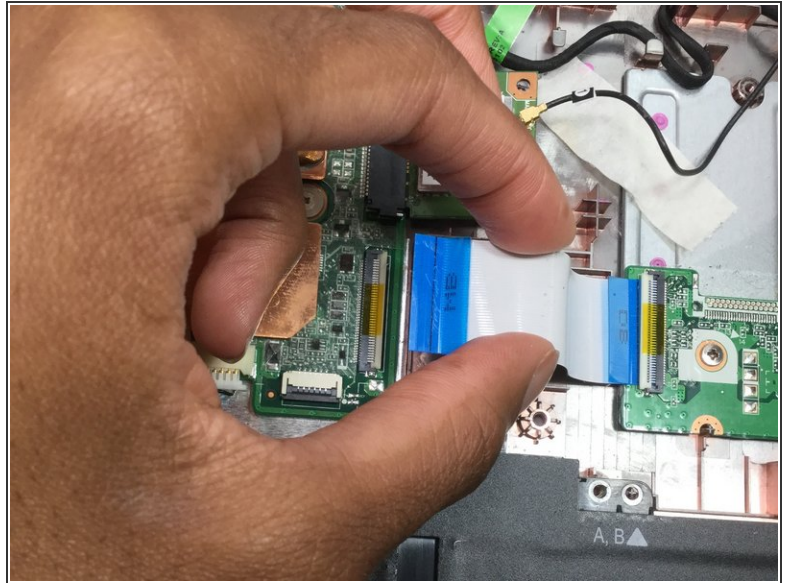
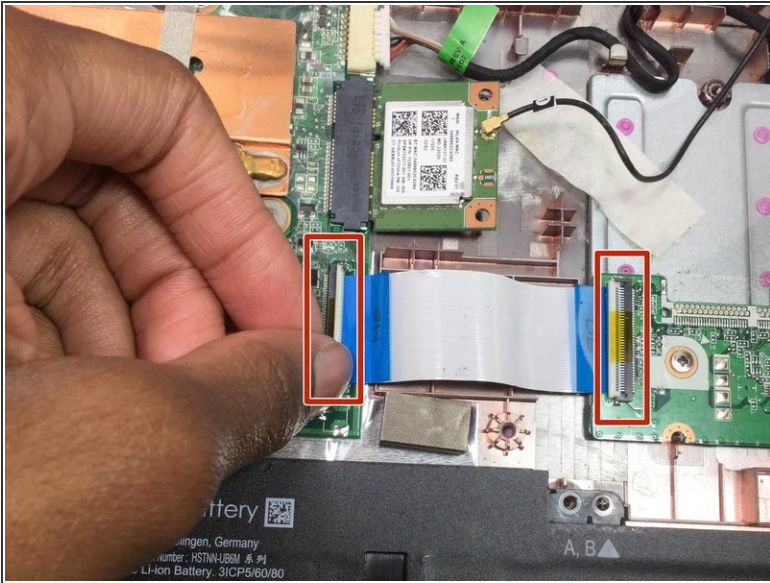
- Lift the pins holding the keyboard cable in place and slide the cable out to disconnect the keyboard.

Step 5



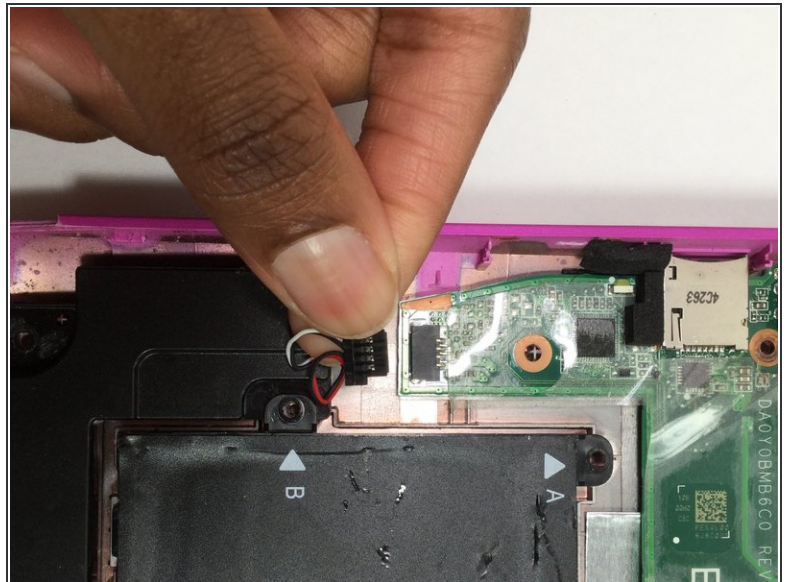
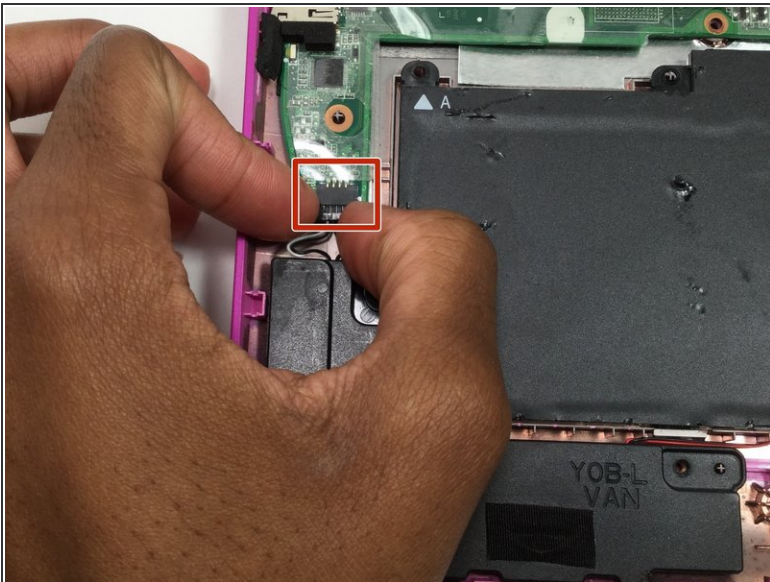
- Unplug the battery cable.
 - Remove the screws securing the battery in place using the 1.5 flathead screwdriver.
 - Lift the battery out of the laptop.
- ⚠ Make sure to have the battery unplugged before you unplug any other cables so as to not fry anything or cause unnecessary damage to the laptop.

Step 6



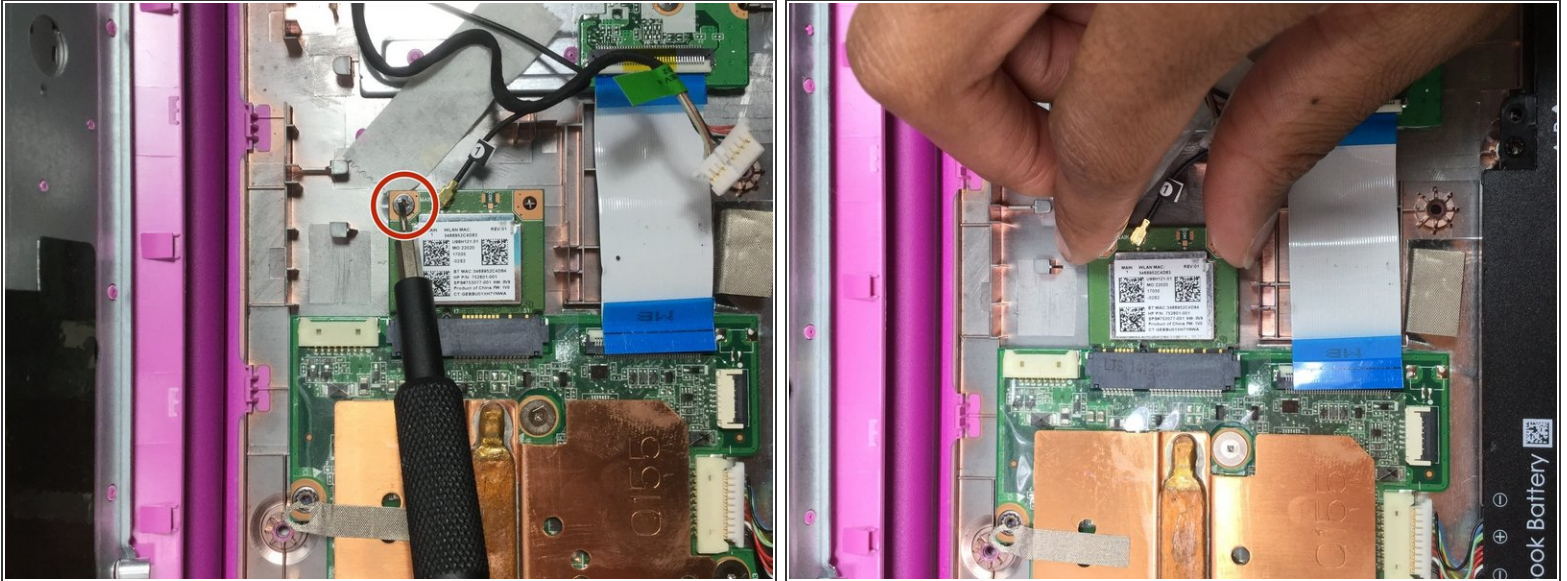
- Lift the pins up to slide the cable that connects the USB ports out.

Step 7



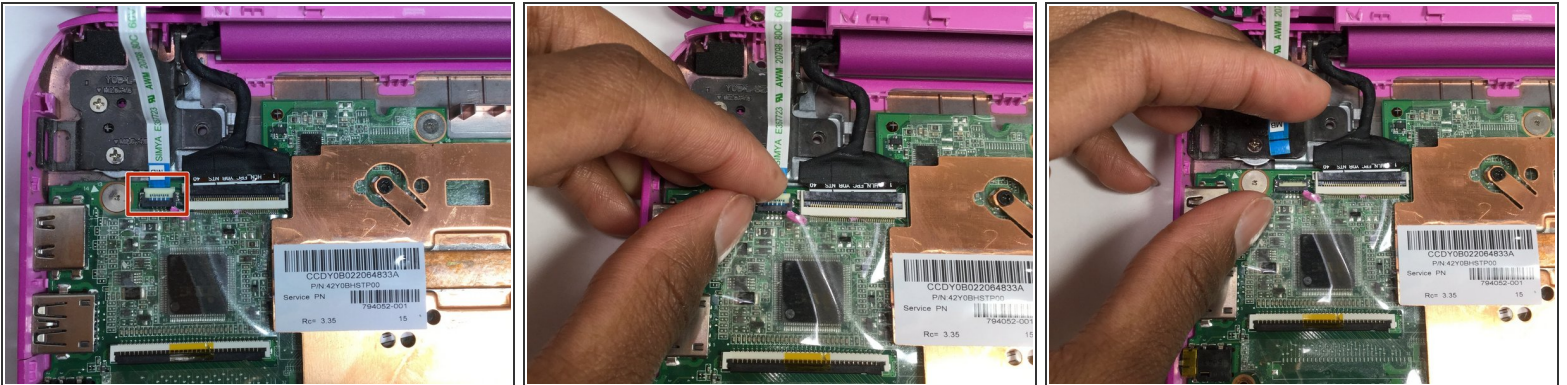
- Unplug the cable for the speaker wire.

Step 8



- Remove the screw securing the WiFi card in place using the JIS 4mm JO bit. Slide the card out of its socket.

Step 9



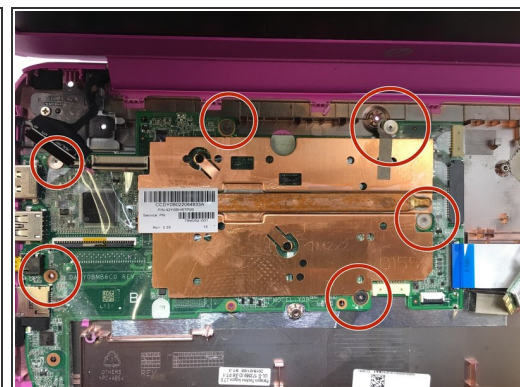
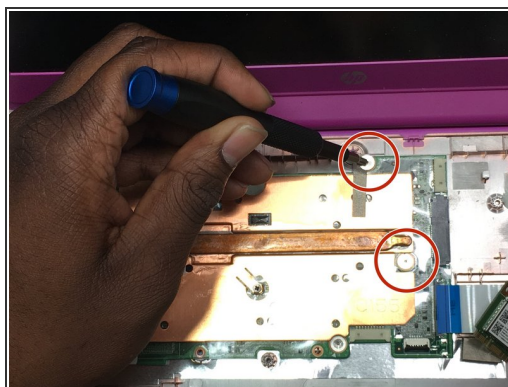
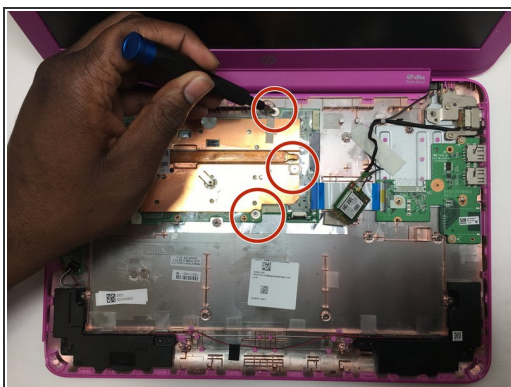
- Unplug the power jet, by lifting the pin and sliding the cable out.

Step 10



- Lift the pin up and unplug the video cable pin to disconnect it from the LCD.

Step 11



- Using the 1.5 flathead screwdriver, remove the screws securing the motherboard in place. Carefully lift the old motherboard module, and install the new module.

To reassemble your device, follow these instructions in reverse order.