



HP Stream 13-c002dx Speakers Replacement

This guide will show how to replace the speakers on this device.

Written By: Chris Beasley



INTRODUCTION

This guide includes laptop disassembly to gain access to the internal components and removal of the speakers.



TOOLS:

- [Phillips #0 Screwdriver](#) (1)
- [iFixit Opening Tools](#) (1)



PARTS:

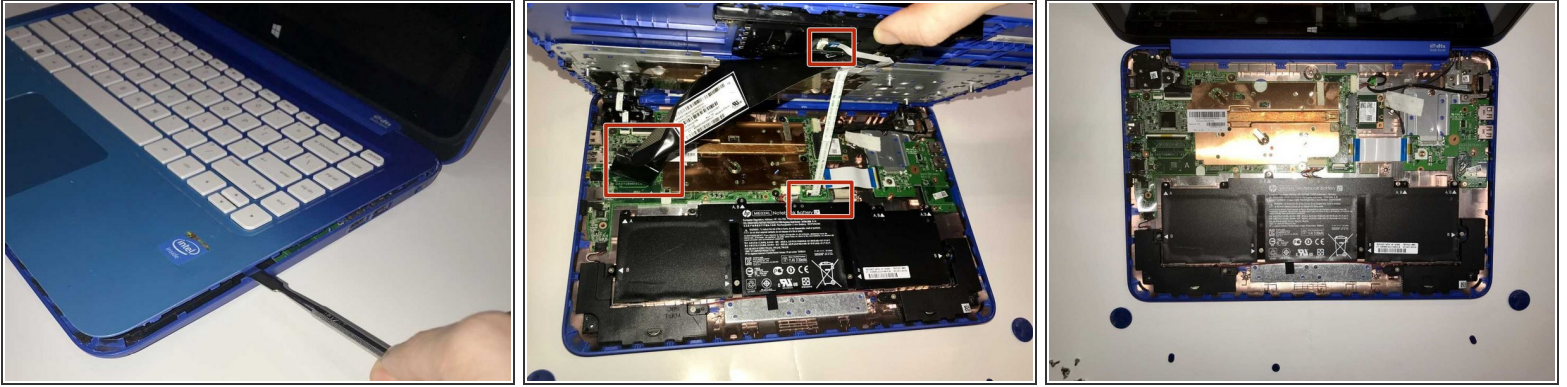
- [HP Stream 13-c002dx speakers](#) (1)

Step 1 — Keyboard



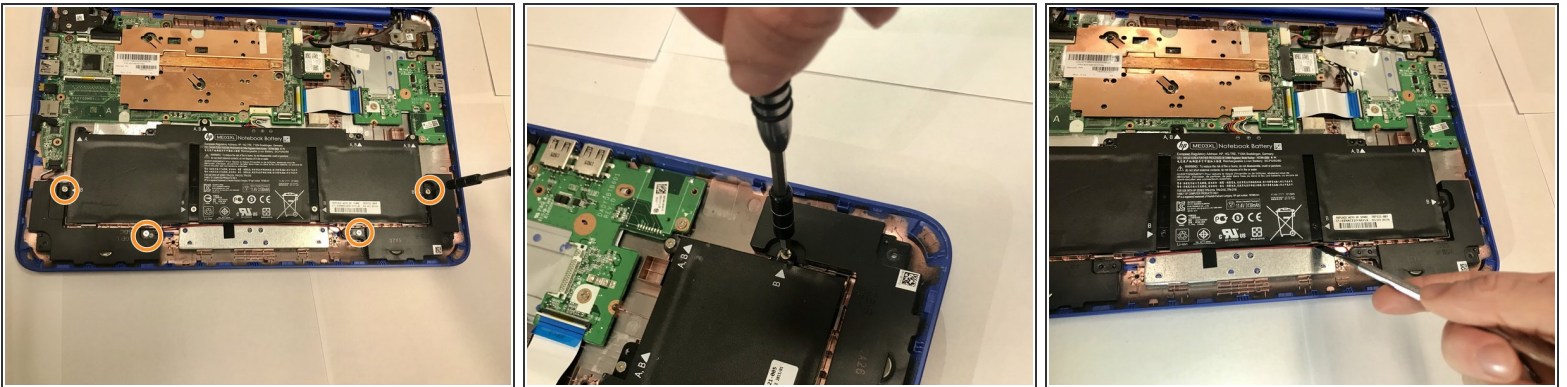
- Begin by placing your laptop on a clean surface such as a table and away from any liquids which may spill and damage components.
- Flip the laptop over so the bottom is facing up and use your Phillips #0 screwdriver to remove the 11 visible 5mm screws on the back.
 - ⓘ There are some screws underneath the rubber feet. Remove them to gain access
- Unscrew the two remaining 2.5mm screws. Keep these screws separate from the first eleven 5mm screws.

Step 2



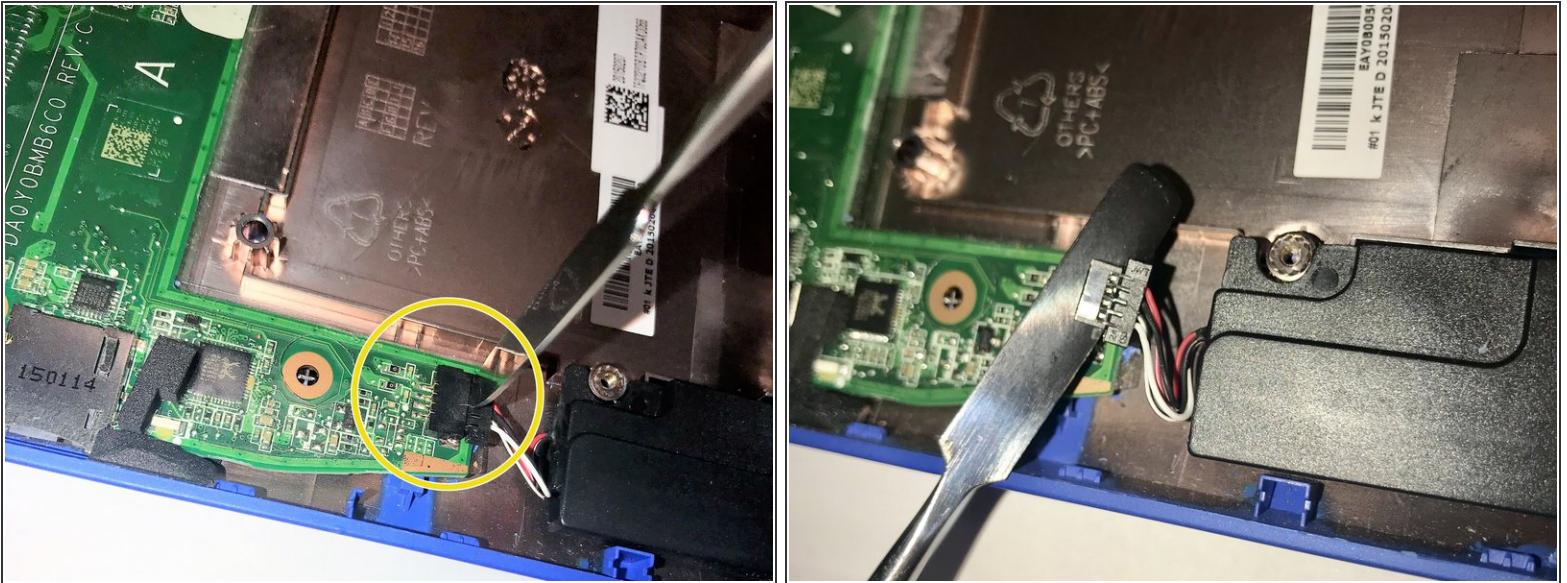
- Flip the laptop back over onto its normal side up and raise the screen. Using the metal spudger, separate the keyboard surface from the bottom of the laptop.
- While lifting the keyboard surface from the bottom, you will notice three cables still attaching them together. Gently unplug each of these cables from the motherboard.
- ❗ With the screen and keyboard parts of the laptop removed, you have access to the laptop's internal components.

Step 3 — Speakers



- You will notice various screws located on the outer edges of the speakers. Using your Philips screwdriver, remove each of these screws.
- Connecting the two speakers is a red and black wire located at the edge of the battery. Using your flathead screwdriver, lift the wire upward.

Step 4



- Using your iFixit Opener Tool, remove the wires connecting the speakers to the motherboard by lifting the indicated piece upward.'

⚠ A metal spudger is shown in this picture. Use a plastic opening tool to disconnect the connector instead, to avoid damaging the components and conducting electricity.

Step 5



- Carefully remove the right and left components of the battery out of the device.
- You have successfully removed the speakers from the device.

To reassemble your device, follow these instructions in reverse order.