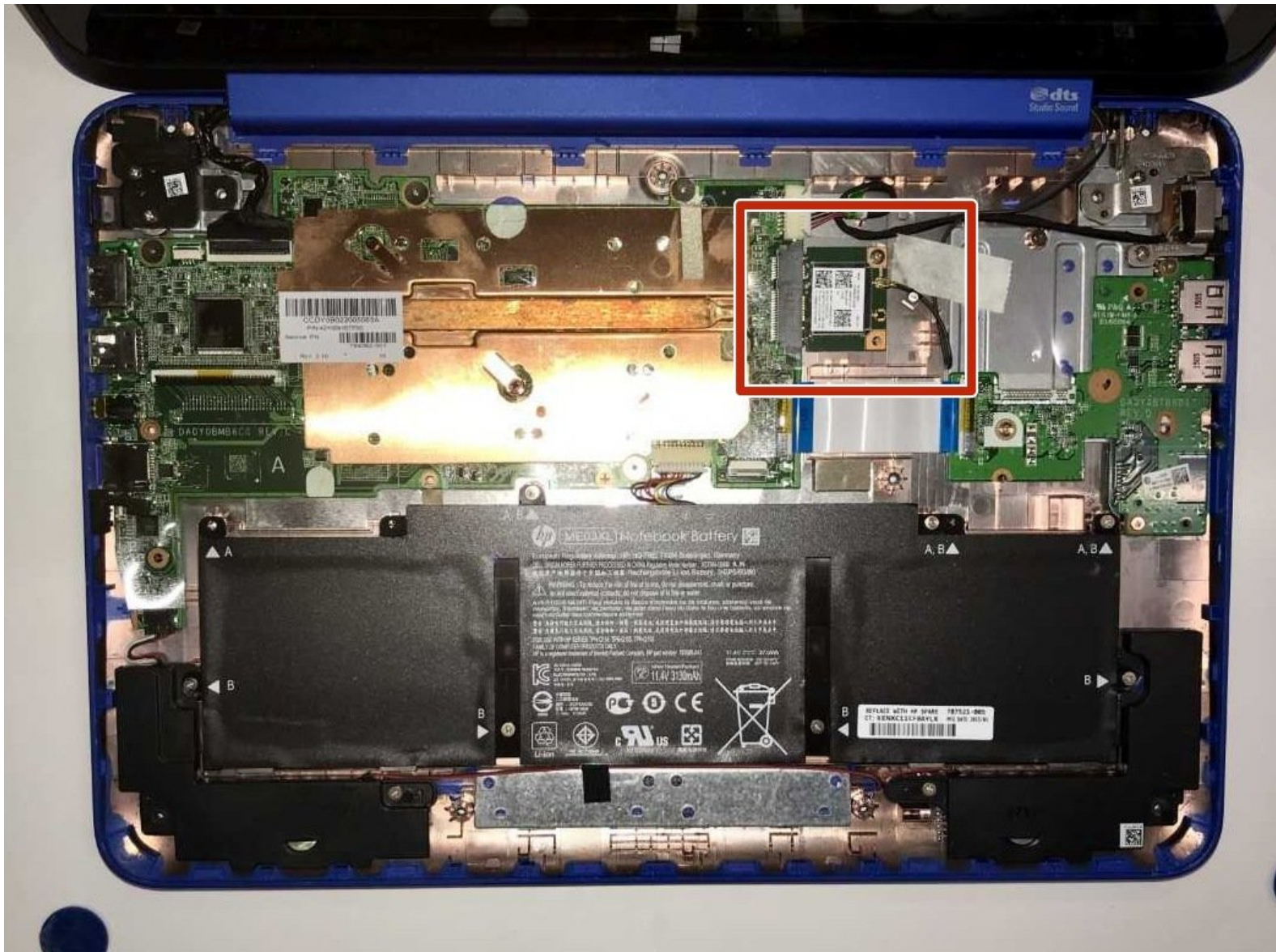




# HP Stream 13-c002dx Wireless Card Replacement

Replace the wifi card in your HP Stream 13-c002dx.

Written By: Hailee McCraw



# INTRODUCTION

This guide covers the accessing and replacing of the wireless card in an HP Stream 13-c002dx.



## TOOLS:

- [Phillips #0 Screwdriver](#) (1)
- [Flathead Screwdriver](#) (1)
- [Metal Spudger](#) (1)



## PARTS:

- [HP Stream 13-c002dx Wifi Chip](#) (1)

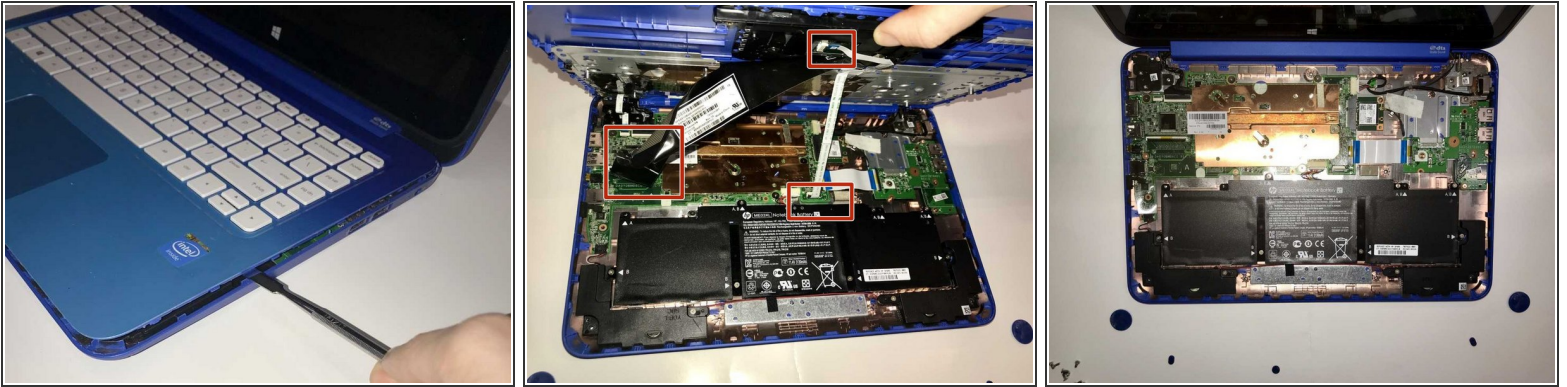
## Step 1 — Keyboard



- Begin by placing your laptop on a clean surface such as a table and away from any liquids which may spill and damage components.
- Flip the laptop over so the bottom is facing up and use your Phillips #0 screwdriver to remove the 11 visible 5mm screws on the back.
  - ⓘ There are some screws underneath the rubber feet. Remove them to gain access
- Unscrew the two remaining 2.5mm screws. Keep these screws separate from the first eleven 5mm screws.

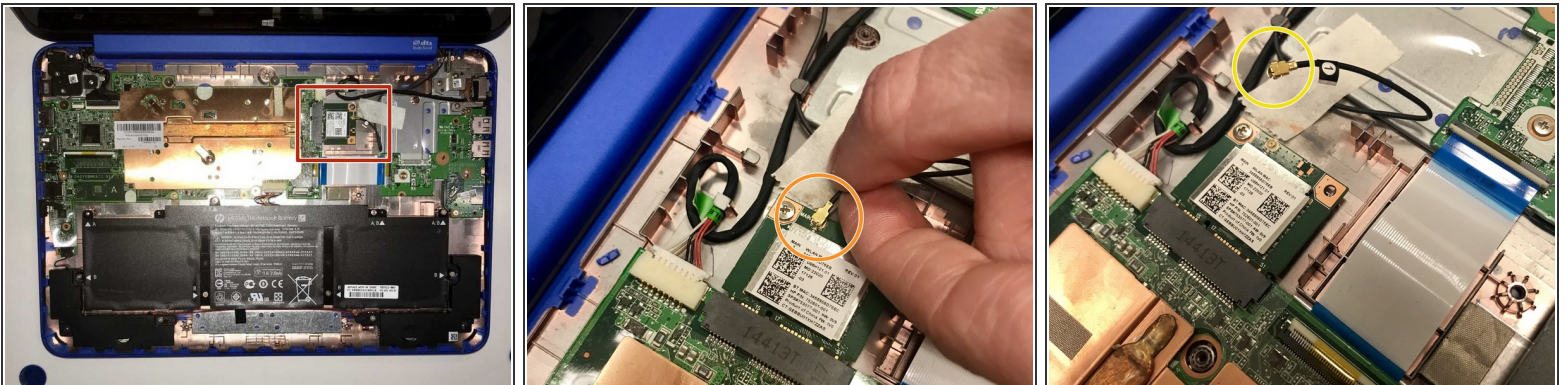


## Step 2



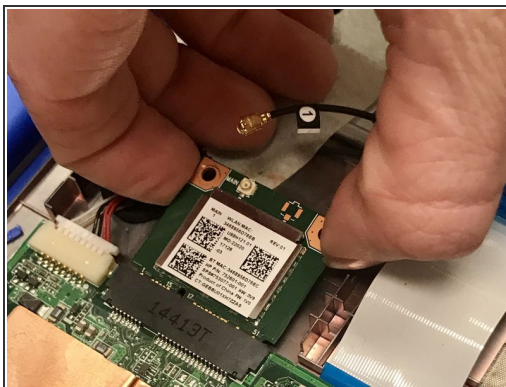
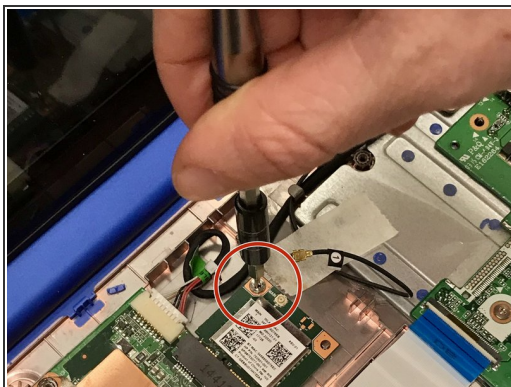
- Flip the laptop back over onto its normal side up and raise the screen. Using the metal spudger, separate the keyboard surface from the bottom of the laptop.
- While lifting the keyboard surface from the bottom, you will notice three cables still attaching them together. Gently unplug each of these cables from the motherboard.
- ❗ With the screen and keyboard parts of the laptop removed, you have access to the laptop's internal components.

## Step 3 — Wireless Card



- Inside the laptop you will notice the wireless card located in the upper middle. This will be what you are replacing.
- Attached to the Wi-Fi card is a black wire that must be removed. Using your hand, lift gently on the wire as close as you can to where it connects to the Wi-Fi card.
- Once the wire is removed, set it aside so it does not get damaged.

## Step 4



- Remove the screw holding the wireless card in place.
- With the screw removed, gently pull back the Wi-Fi card and then lift it out of the laptop. You are now ready to insert the new wireless card.

To reassemble your device, follow these instructions in reverse order.