



HP Stream 13-c010nr Wi-Fi Card Replacement

Follow this guide to replace the wireless Wi-Fi card on a HP Stream 13-c010nr laptop.

Written By: Keegan Lapham



INTRODUCTION

Follow this guide to replace the wireless Wi-Fi card on a HP Stream 13-c010nr laptop.



TOOLS:

- [Spudger](#) (1)
 - [Precision Tweezers Set](#) (1)
 - [Phillips #0 Screwdriver](#) (1)
-

Step 1 — HP Stream 13-c010nr Disassembly



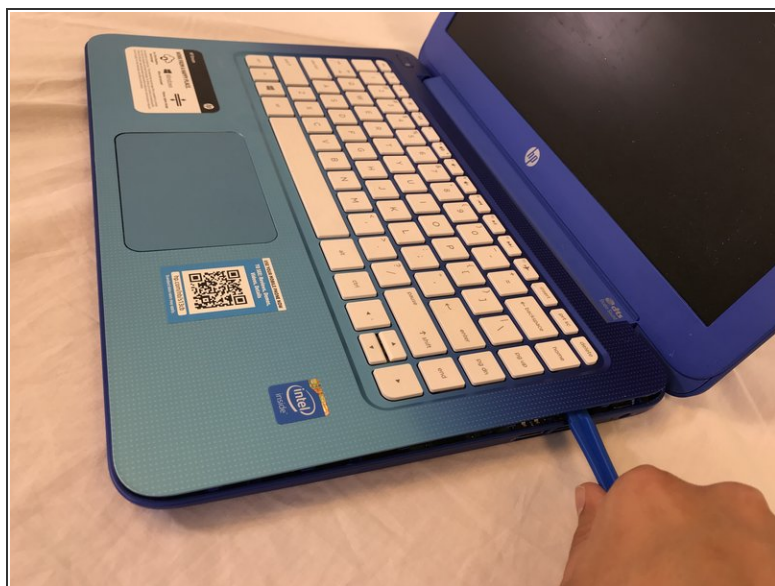
- Remove the five rubber feet from the bottom of the laptop with a plastic opening tool.


Step 2



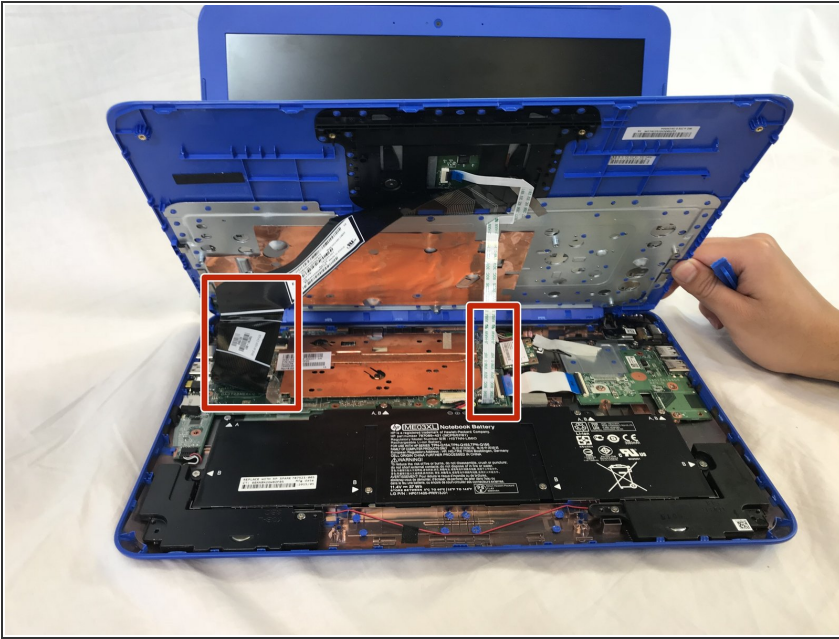
- Remove the thirteen 5mm Phillips #0 screws from the bottom case.

Step 3



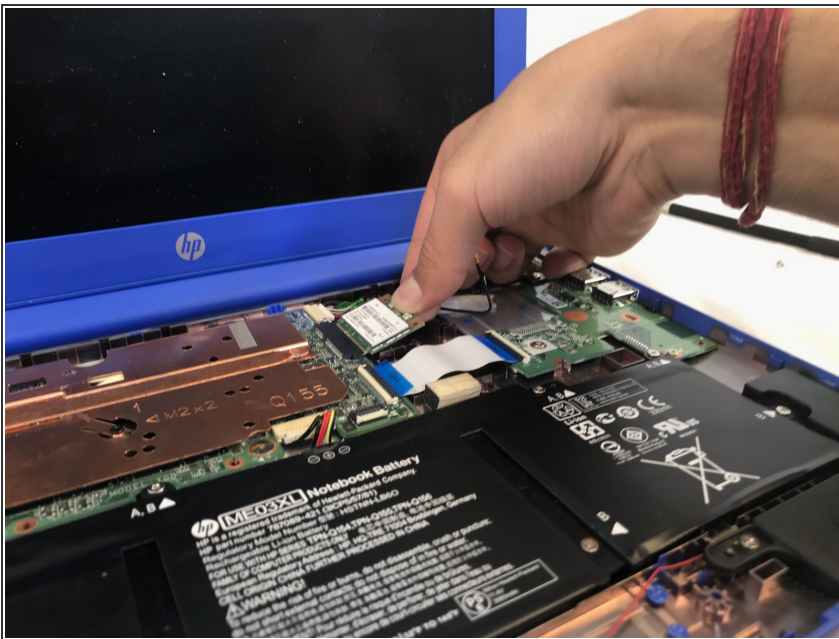
- Flip the laptop over and open it up.
- Wedge a plastic opening tool between the keyboard and bottom case, pry upwards to separate the two pieces.
- Lift up the keyboard.
-  Ribbon cables still connect the two pieces.

Step 4



- Use a spudger to flip up the retaining flaps on the keyboard ribbon cable [ZIF](#) sockets.
- Pull up the ribbon cables from their sockets.

Step 5 — Wi-Fi Card



- Slide the Wi-Fi card out from the motherboard.

To reassemble your device, follow these instructions in reverse order.