



# HP Stream 13-c110nr Display Replacement

This guide will show the user how to remove the Display assembly from the HP Stream 13-c110nr.

Written By: Stacey Deel



## INTRODUCTION

The Display Assembly repair guide will assist users to repair the monitor of the HP Stream 13-c110nr. The guide will also provide steps to remove the WLAN and camera assembly.



### TOOLS:

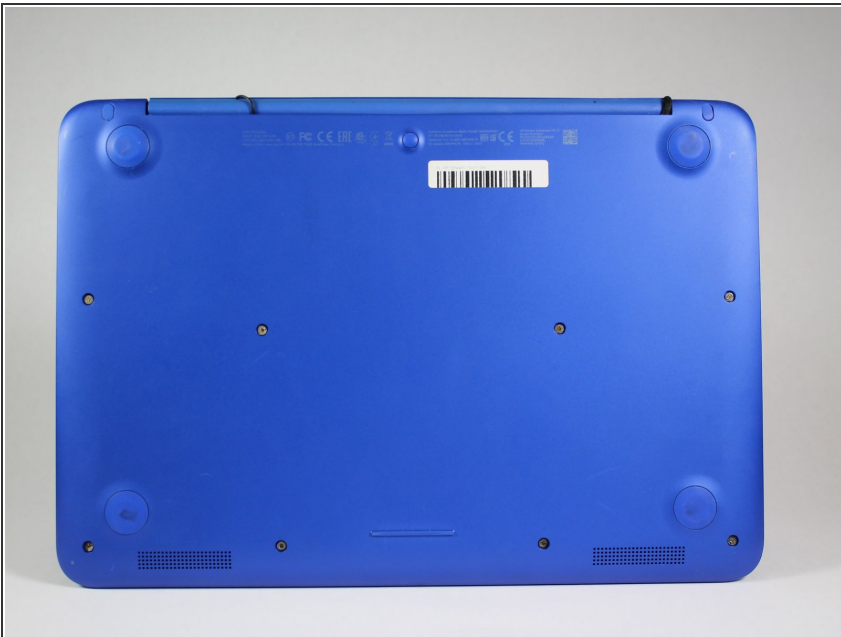
- [Phillips #0 Screwdriver](#) (1)
  - [Spudger](#) (1)
  - [Pick Tool](#) (1)
  - [Magnetic Project Mat](#) (1)
  - [Tweezers](#) (1)
-

## Step 1 — Top Cover/Keyboard



- Close the device.
  - Remove AC adapter plug from electrical outlet.
  - Remove AC adapter from device.
  - Turn the device off.
  - Unplug all external devices from device.
- i** If you are unsure whether the computer is off or in hibernation mode, start the computer and then shutdown the operating system.

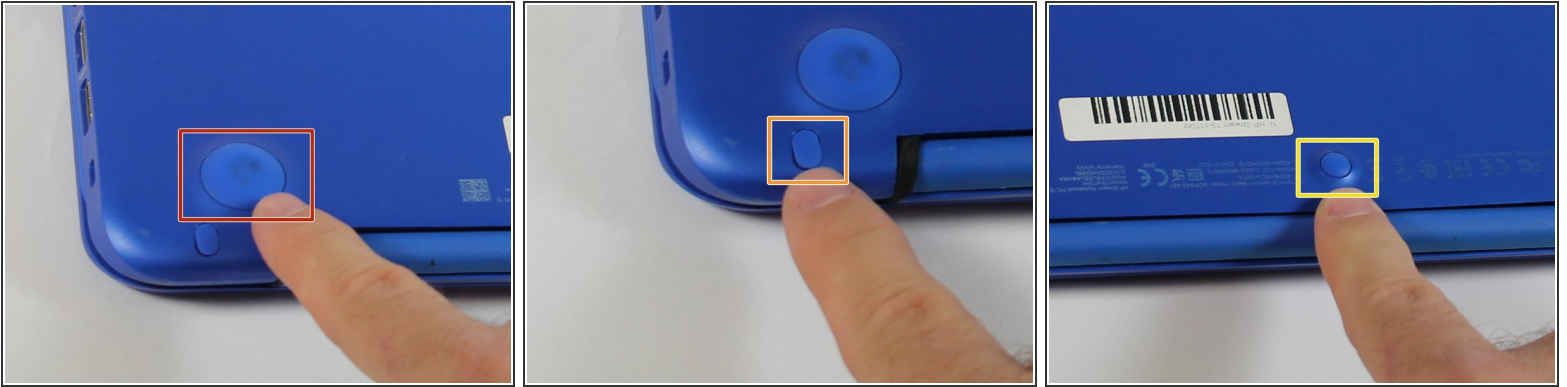
## Step 2



- Turn the device upside down with the back facing towards you.



### Step 3



- Use a pick to remove the two (2) large computer feet along the back edge of the device.
- Use a pick to remove the two (2) small computer feet.
- Use a pick to remove the one (1) screw cover.
- Place rubber computer feet in safe place for reassembly.

### Step 4



- Remove the thirteen (13) Phillips P0 PM2.5x6.0 mm screws.
- Place the thirteen (13) screws on magnetic mat for reassembly.

## Step 5



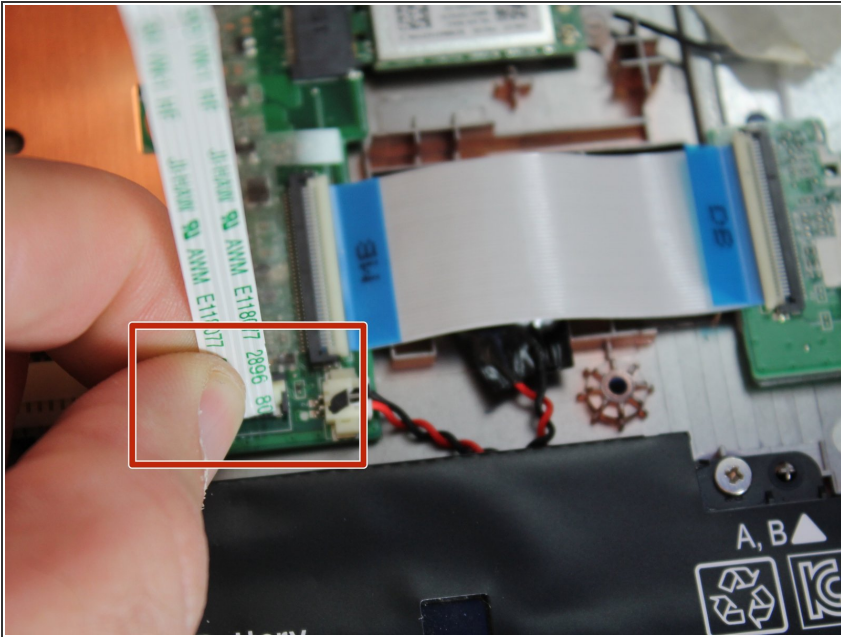
- Turn the device over with the front facing towards you.
- Open the device as shown.

## Step 6



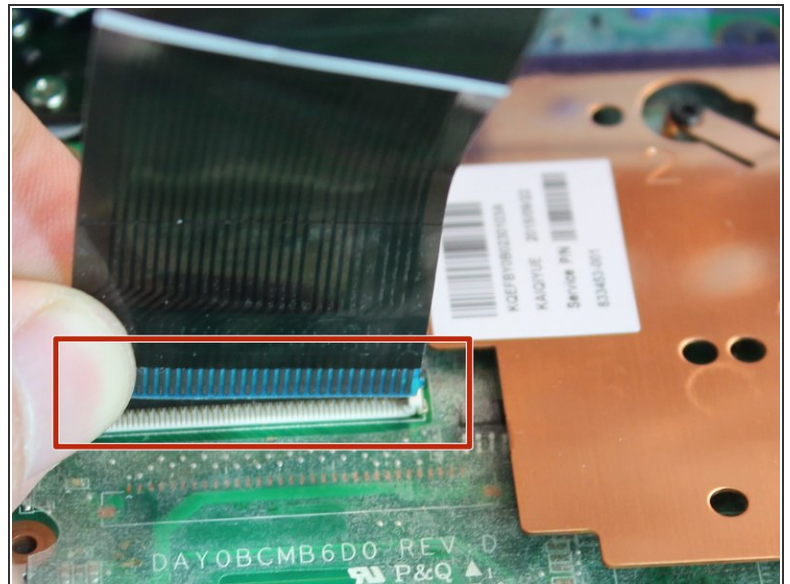
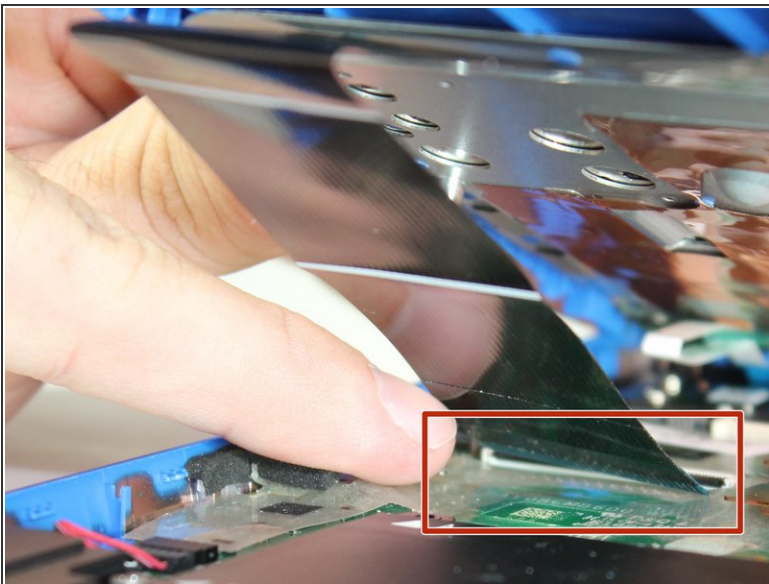
- Insert the Spudger between the Top Cover and Bottom Cover to lift the front edge until it separates from the Bottom Cover.
- ⓘ Do not completely remove the Keyboard/Top cover from the Bottom cover yet.

## Step 7



- Disconnect the Touchpad cable.

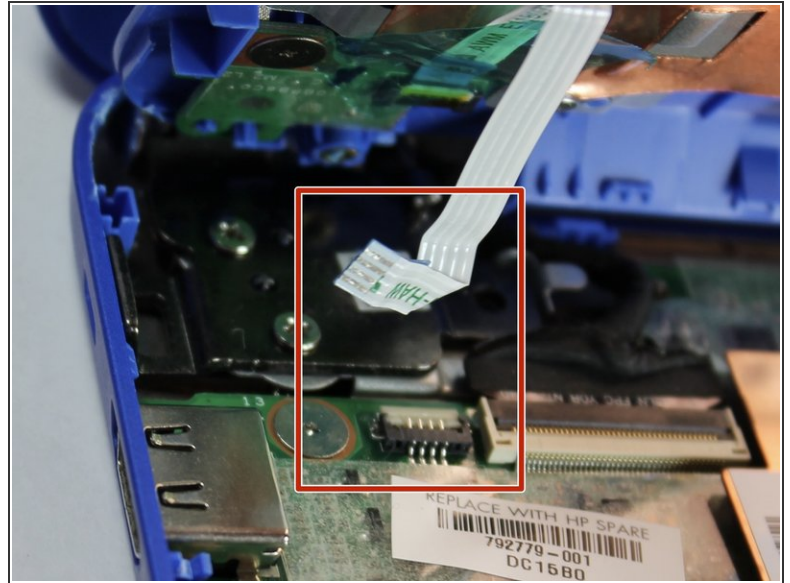
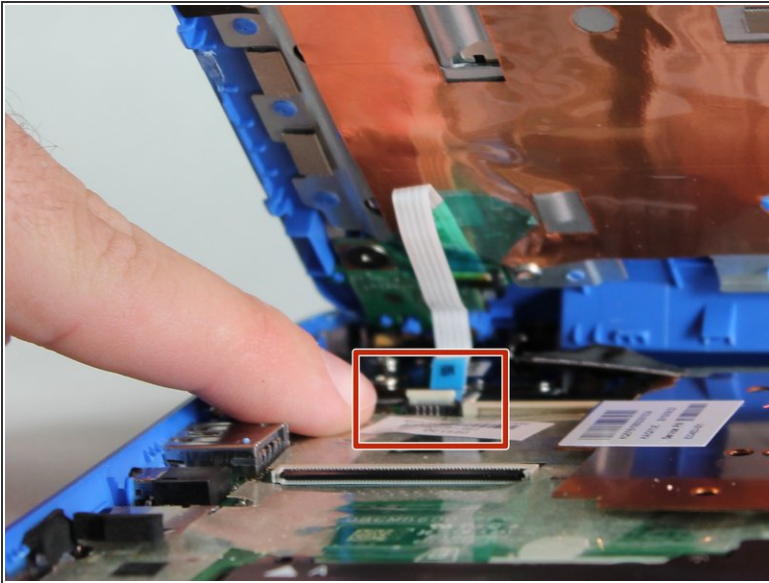
## Step 8



- Disconnect the Keyboard Cable.

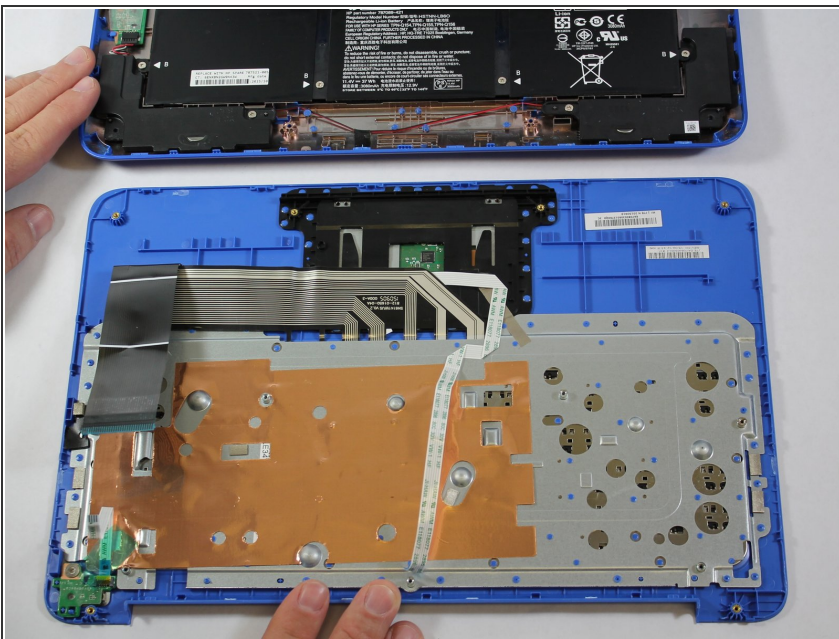


## Step 9



- Disconnect the Power connector cable.

## Step 10



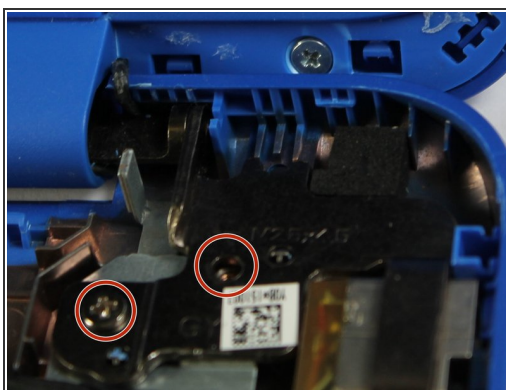
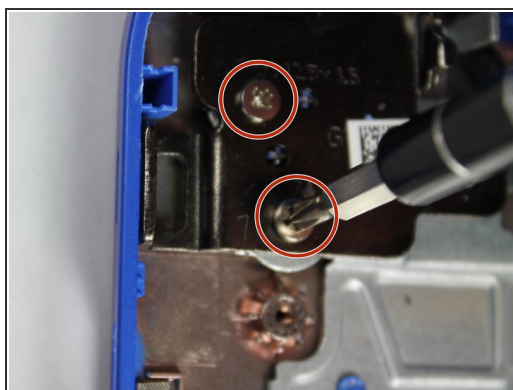
- Remove the Keyboard/Top Cover from the device.

## Step 11 — Display Assembly



- Disconnect the Display Cable from the System Board.

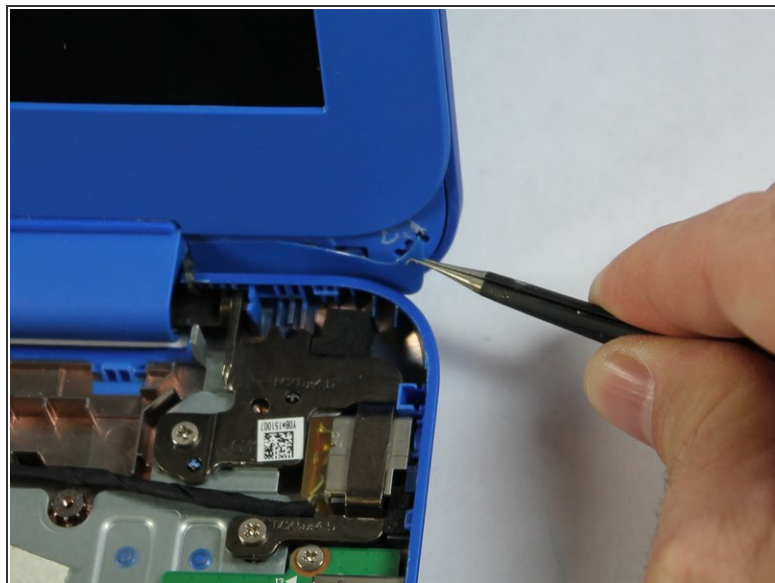
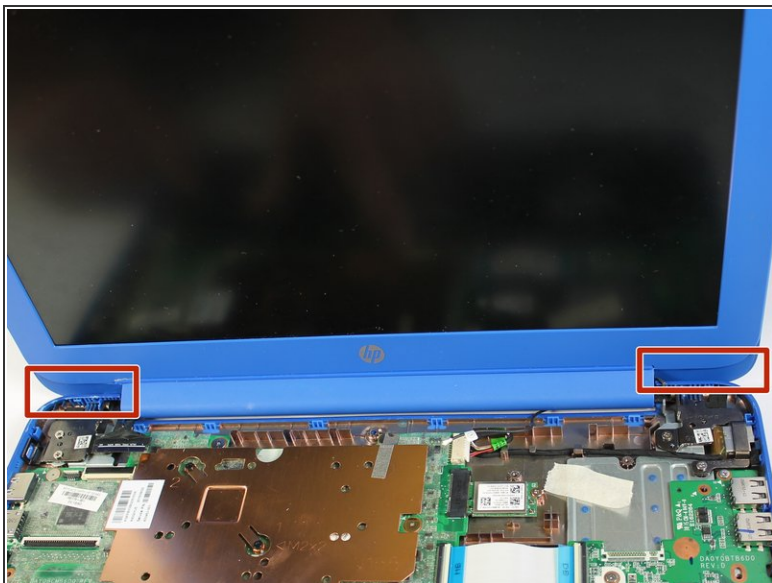
## Step 12



- Remove the four (4) Phillips P0 PM2.5x4.5 mm screws from the screen retaining brackets.
- ☑ Place the four (4) screws on the magnetic mat for reassembly.



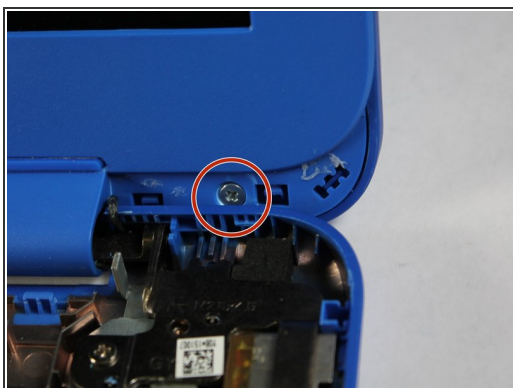
## Step 13



- Peel off two (2) stickers located at the bottom corners of the display assembly.

☑ Place two (2) stickers in safe place for reassembly.

## Step 14



- Remove the two (2) Phillips P0 PM2.5x2.0 mm screws.

☑ Place the two (2) screws on the magnetic mat for reassembly.

## Step 15



- Use a pick to pry off the display cover from the display.

## Step 16



- Remove the Display Assembly.

## Step 17



- Remove the four (4) Phillips P0 PM2.5x4.5 mm screws.
  - ☑ Place four (4) screws on magnetic mat for reassembly.
- Remove the two (2) Phillips P0 PM2.5x3.0 mm screws.
  - ☑ Place two (2) screws on magnetic mat for reassembly.

## Step 18



- Separate display from back cover



To reassemble your device, follow these instructions in reverse order.