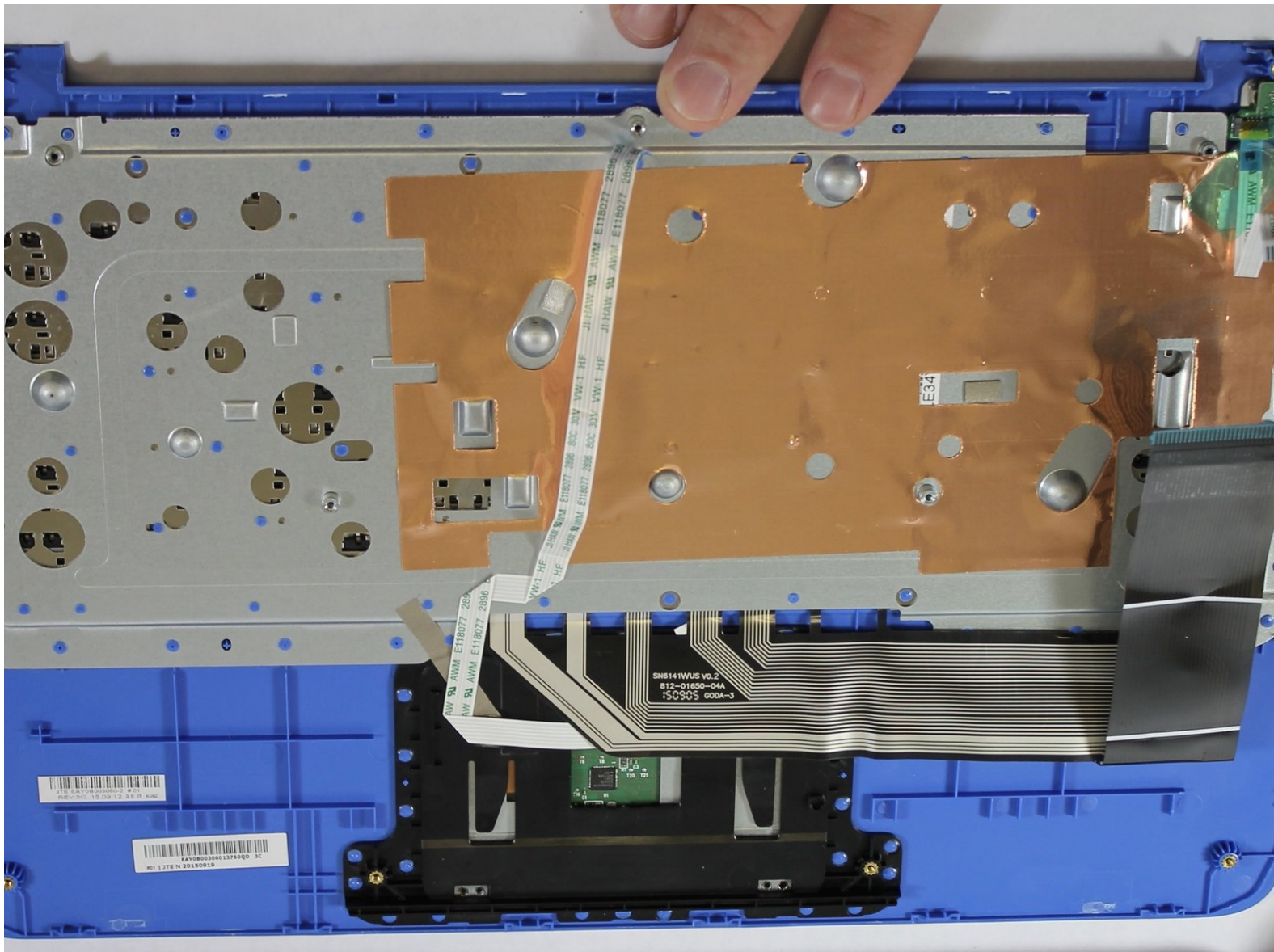




HP Stream 13-c110nr Touchpad Assembly Replacement

This guide will show you how to remove the Touchpad assembly from the HP Stream 13-c110nr.

Written By: Stacey Deel



INTRODUCTION

The Touchpad assembly guide will assist the user in removal and installation within the HP Stream 13-c110nr.



TOOLS:

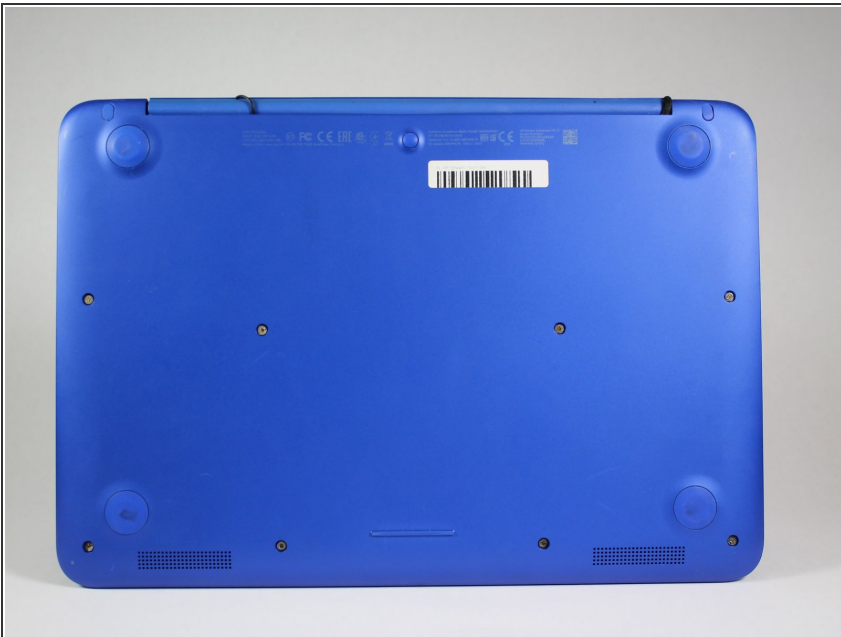
- [Phillips #0 Screwdriver](#) (1)
 - [Spudger](#) (1)
 - [Pick Tool](#) (1)
 - [Magnetic Project Mat](#) (1)
-

Step 1 — Top Cover/Keyboard



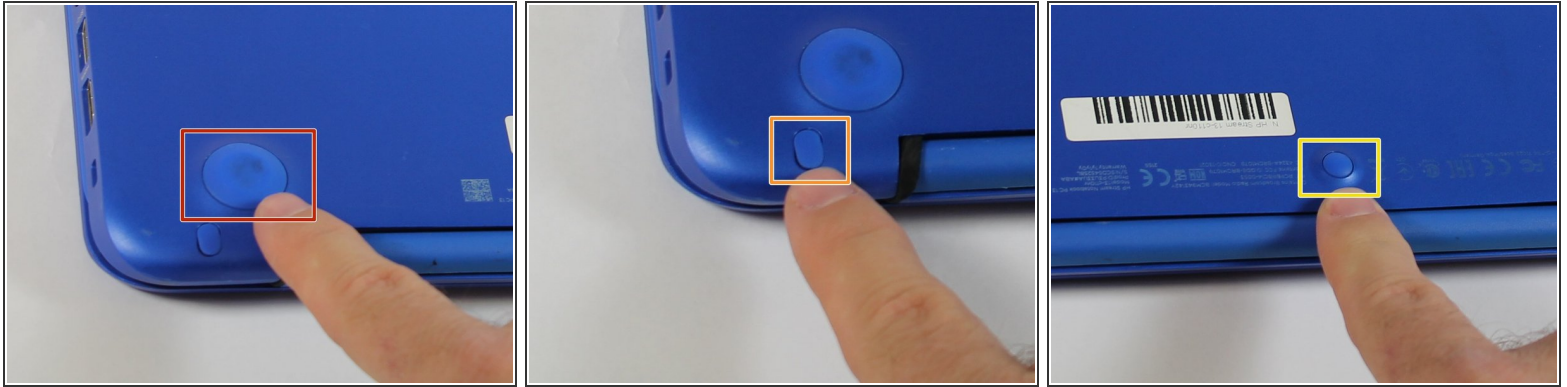
- Close the device.
 - Remove AC adapter plug from electrical outlet.
 - Remove AC adapter from device.
 - Turn the device off.
 - Unplug all external devices from device.
- i** If you are unsure whether the computer is off or in hibernation mode, start the computer and then shutdown the operating system.

Step 2



- Turn the device upside down with the back facing towards you.

Step 3



- Use a pick to remove the two (2) large computer feet along the back edge of the device.
- Use a pick to remove the two (2) small computer feet.
- Use a pick to remove the one (1) screw cover.
- Place rubber computer feet in safe place for reassembly.

Step 4



- Remove the thirteen (13) Phillips P0 PM2.5x6.0 mm screws.
- Place the thirteen (13) screws on magnetic mat for reassembly.

Step 5



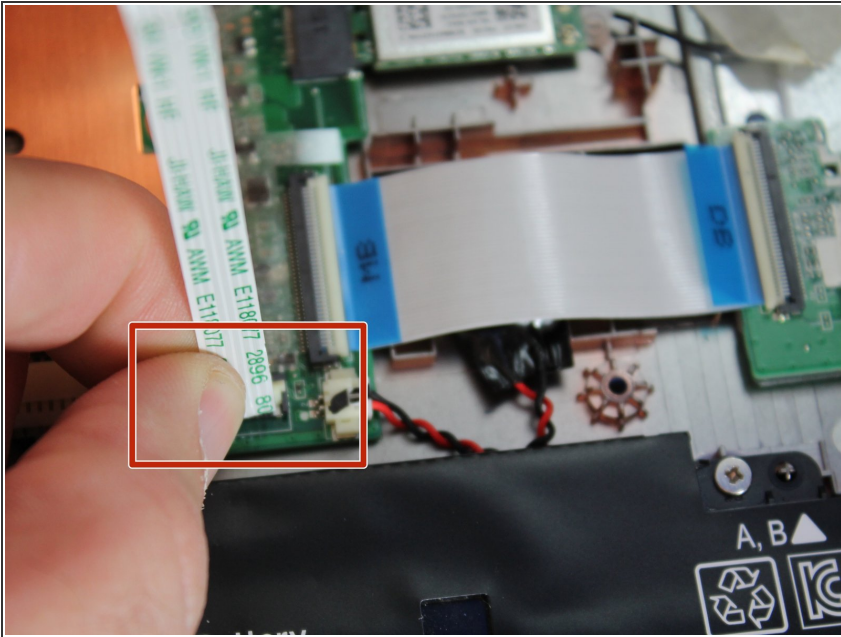
- Turn the device over with the front facing towards you.
- Open the device as shown.

Step 6



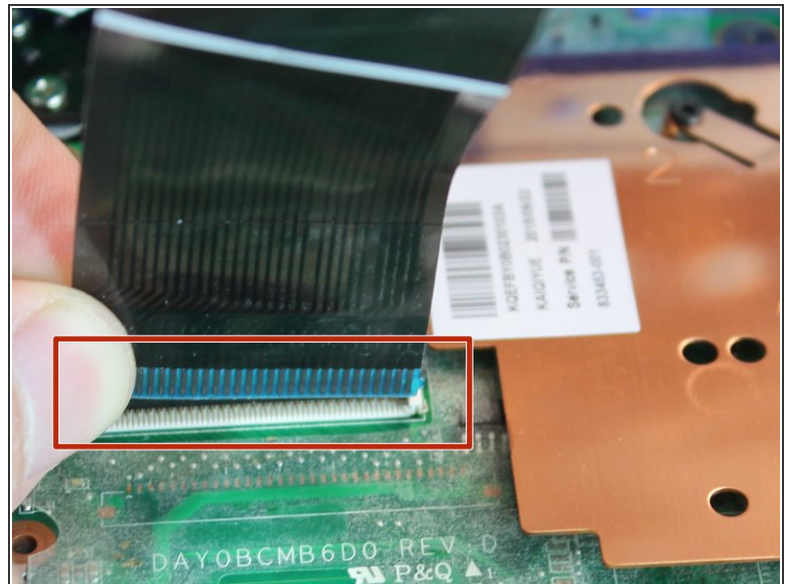
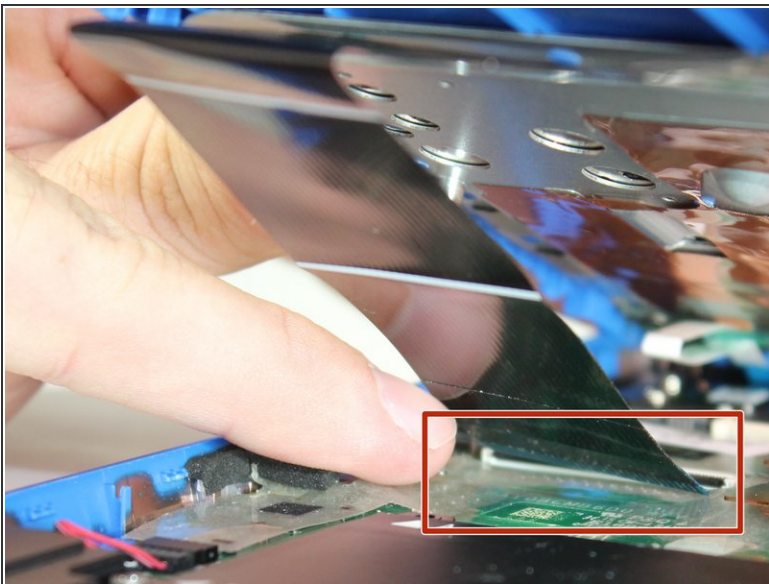
- Insert the Spudger between the Top Cover and Bottom Cover to lift the front edge until it separates from the Bottom Cover.
- ⓘ Do not completely remove the Keyboard/Top cover from the Bottom cover yet.

Step 7



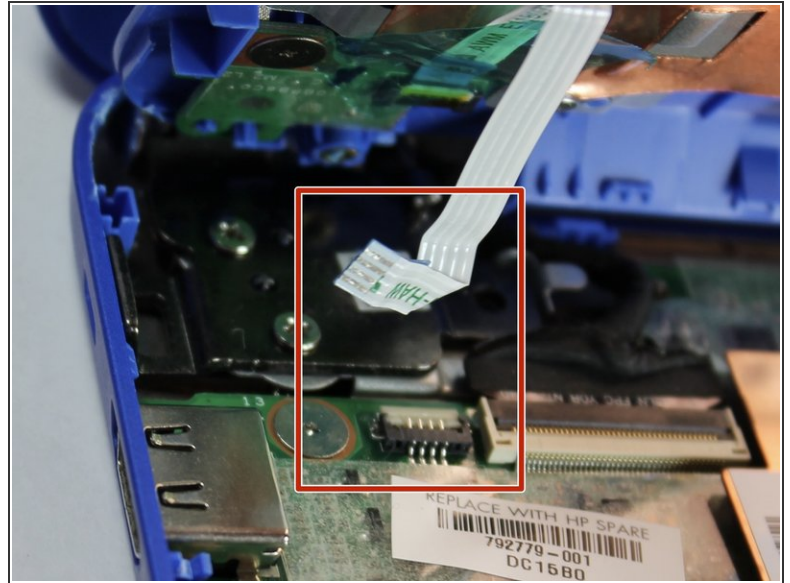
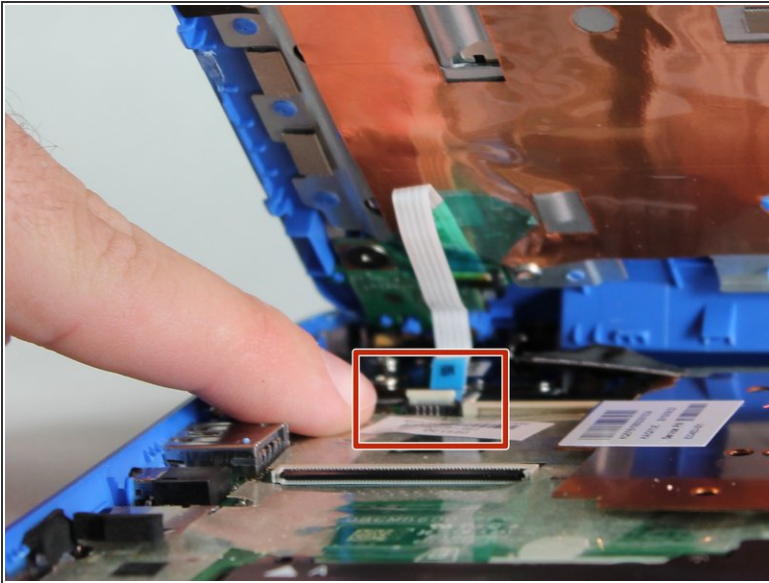
- Disconnect the Touchpad cable.

Step 8



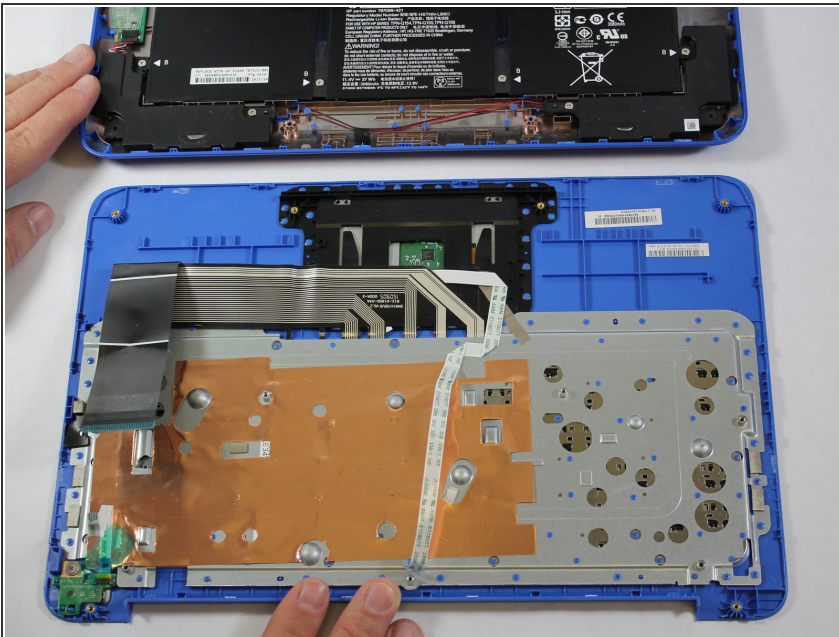
- Disconnect the Keyboard Cable.

Step 9



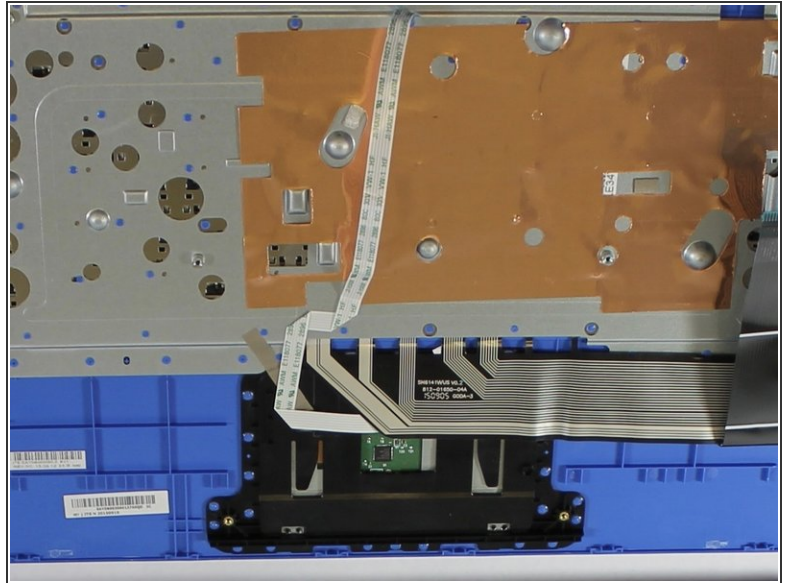
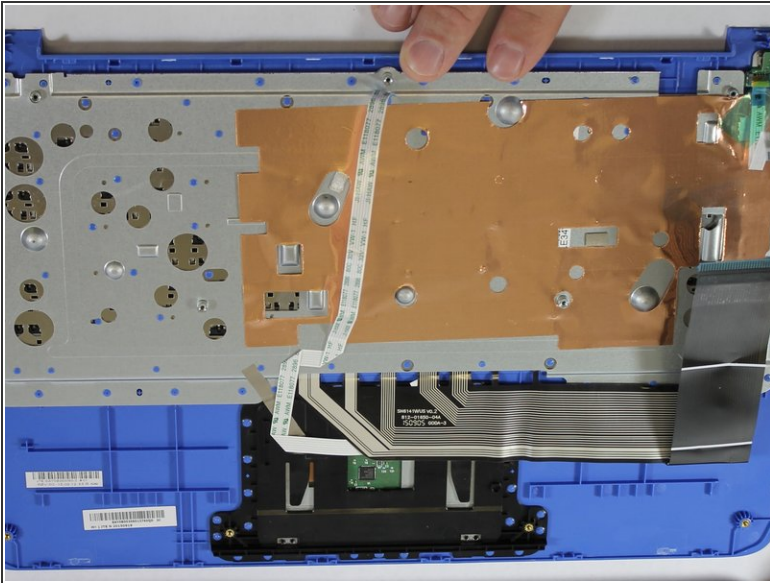
- Disconnect the Power connector cable.

Step 10



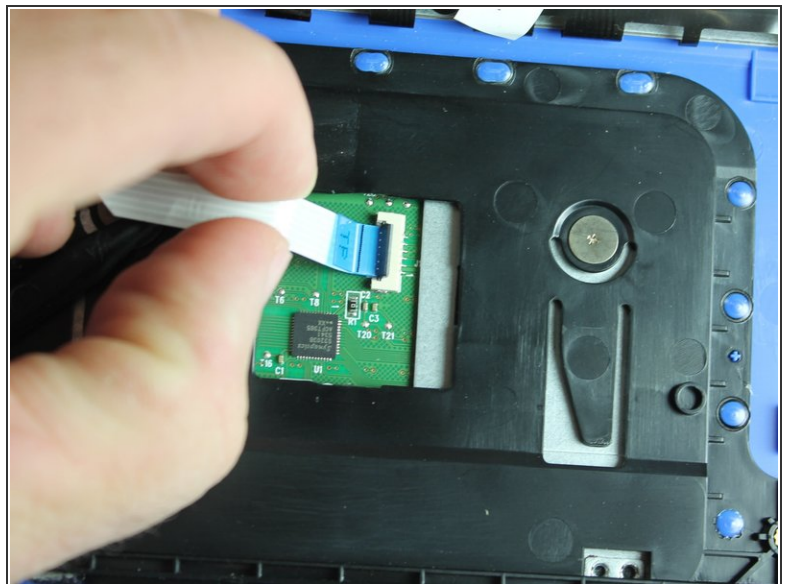
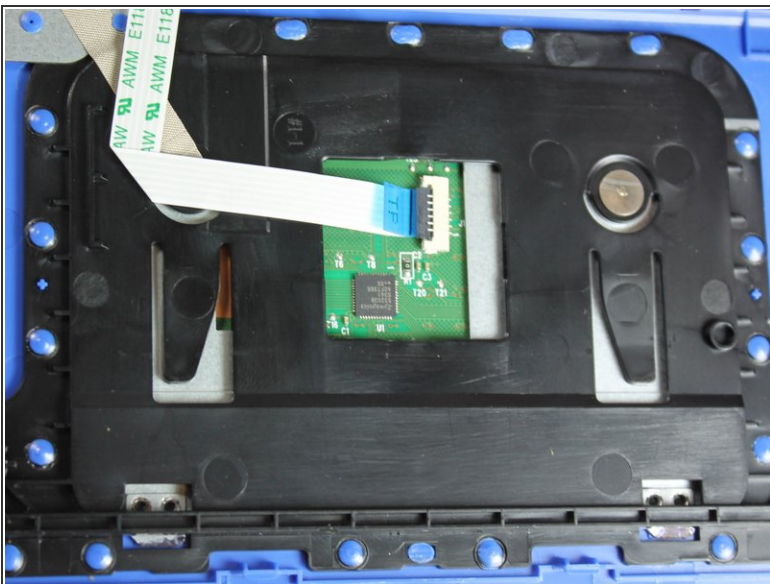
- Remove the Keyboard/Top Cover from the device.

Step 11 — Touchpad Assembly



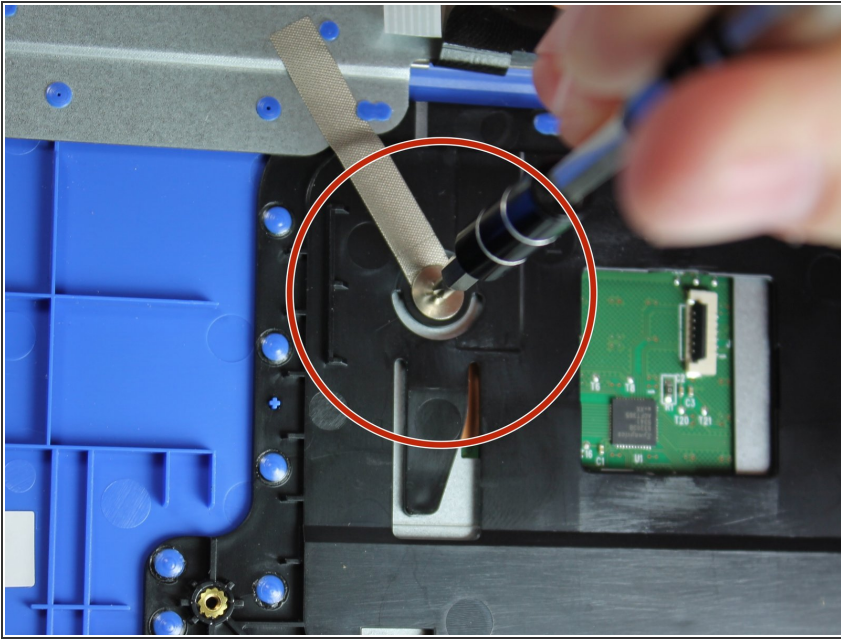
- Place the Top Cover/Keyboard assembly face down with the front towards you.

Step 12



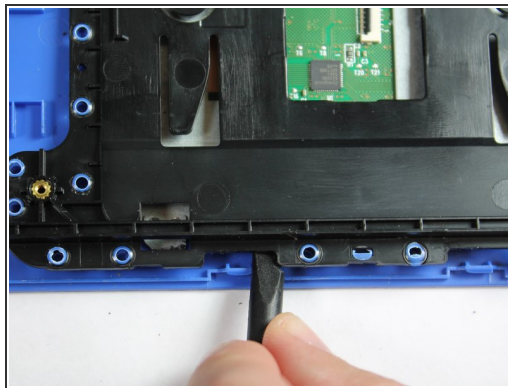
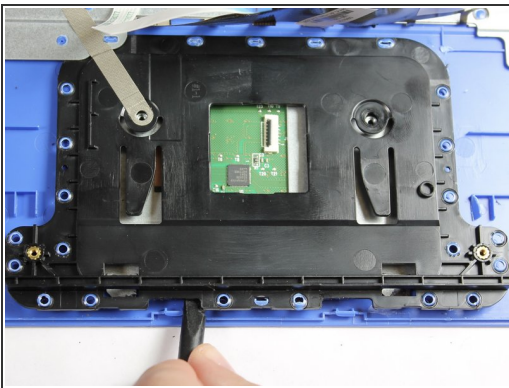
- Remove the TouchPad cable.

Step 13



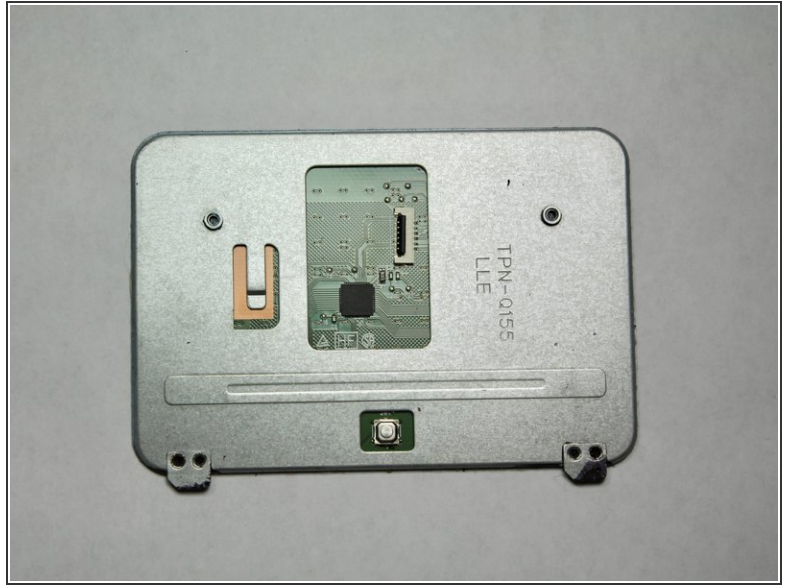
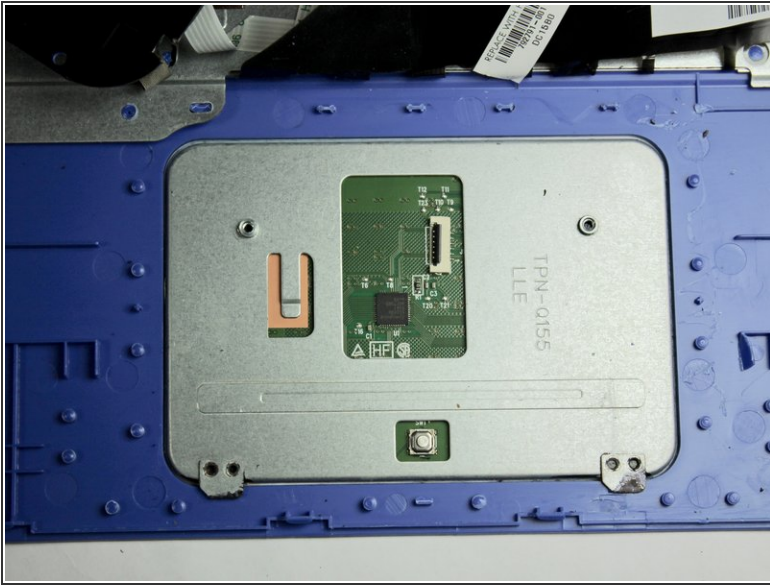
- Remove two (2) Phillips P0 PM2.5x3.0 mm screws from Touchpad assembly.
- Place two (2) screws on magnetic mat for reassembly.

Step 14



- Use the plastic pick to pry up the black TouchPad cover from the blue top cover.
- ❗ The TouchPad cover is molded to the Top Cover/Keyboard. Slight pressure must be maintained to release the cover.
- ⚠ A popping noise may be heard when prying the touchpad cover off of the top cover.

Step 15



- Remove the Touchpad assembly from the device.

To reassemble your device, follow these instructions in reverse order.