



# HP Stream 7 Screen Replacement

This replacement will show how to open the HP Stream 7 and properly replace the screen.

Written By: Justin Schnorf



---

## INTRODUCTION

Since HP Stream 7 is a tablet and has many small parts. Be careful when removing/replacing parts. Do not force anything to avoid breaking device material.

---

### TOOLS:

- [Spudger](#) (1)
  - [iFixit Opening Tools](#) (1)
  - [Tweezers](#) (1)
  - [Phillips #000 Screwdriver](#) (1)
  - [Anti-Static Wrist Strap](#) (1)
-

## Step 1 — Battery



- Make sure the tablet is powered off before beginning.
- Gently run the plastic opening tool or your fingernails around the tablet to pry the Back Cover from the tablet.

## Step 2



- Remove the eight 5 mm Phillips 000 screws.
- Gently run the plastic opening tool around the seam to pry the mid back cover from the tablet.

## Step 3



- Using tweezers, gently pull the battery connector towards the battery to remove it from the System Board.
- Pull the blue tabs (Not Shown) out from the tablet at an angle to remove the tape underneath the Battery.
- ⓘ If you broke both tabs, scrape the tape and Battery off.
- ⚠ Scraping off the Battery will damage it. If you are replacing another part, leave the Battery on the display panel.

## Step 4 — Motherboard Replacement



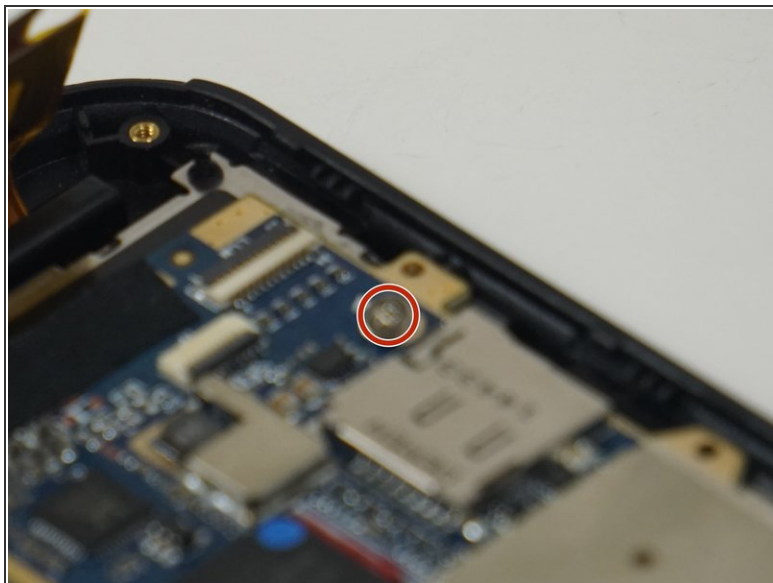
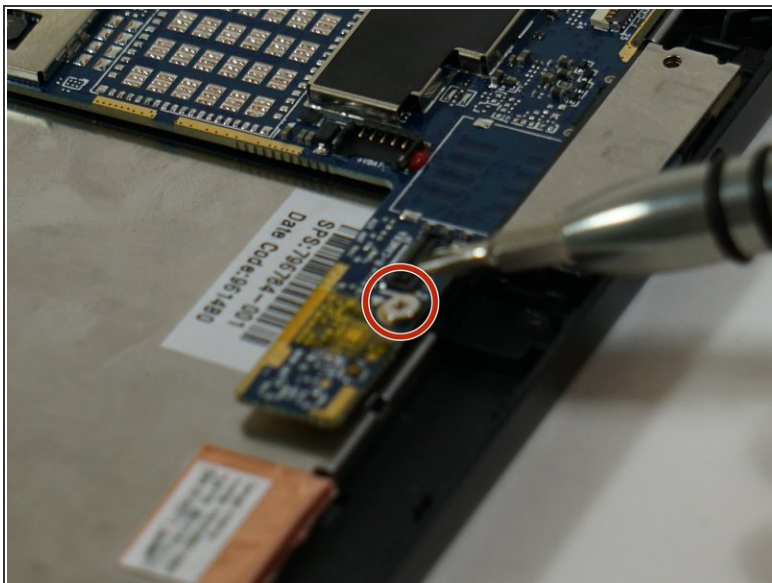
- Disconnect the battery from the motherboard, but **leave the battery on the display panel** (unless you have already taken it off).
- Disconnect the motherboard from the rear-facing camera, the front-facing camera, the antenna, the power button board, the screen, and the display panel using your spudger.

⚠ The cable connected to the display is adhered to the panel, so be careful when removing the cable (like most things here).

ⓘ If you are inexperienced with disconnecting everything, ["Recognizing and Disconnecting Cable Connectors"](#) is a helpful ifixit guide.



## Step 5



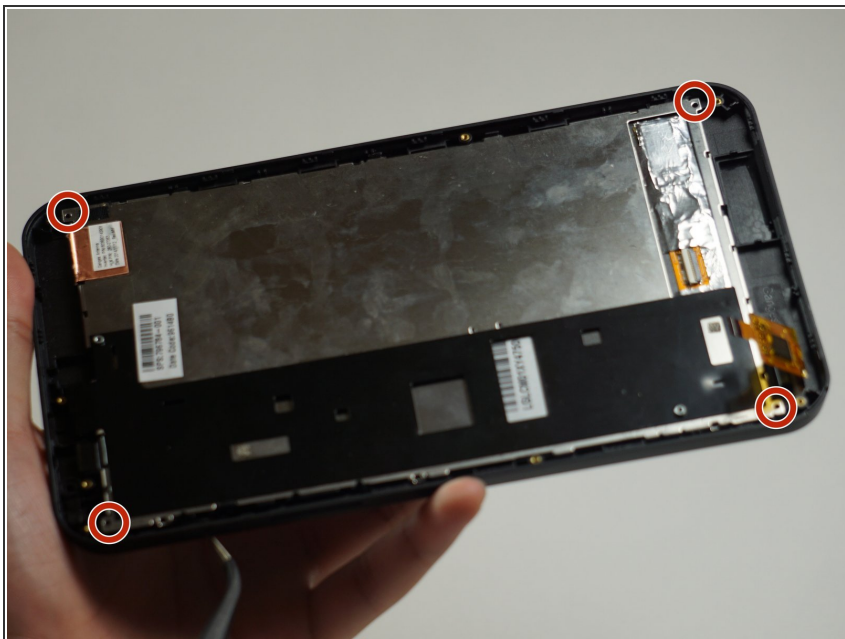
- Remove the two 2 mm Phillips 000 screws from the motherboard.

## Step 6



- Once unscrewed, the motherboard separates from the rest of the device.
- ⓘ The speaker is soldered to the motherboard, but it comes off easily.
- ⚠ Forced separation may result in a damaged motherboard and/or personal injury.

## Step 7 — Screen Replacement



- After removing the motherboard, unscrew the four 2.5 mm Phillips 000 screws from the display panel.

## Step 8



- Using your spudger, pry the display panel off the front.



## Step 9



- The screen should now just come right off. Be sure to catch any broken bits if the screen is damaged.

To reassemble your device, follow these instructions in reverse order.