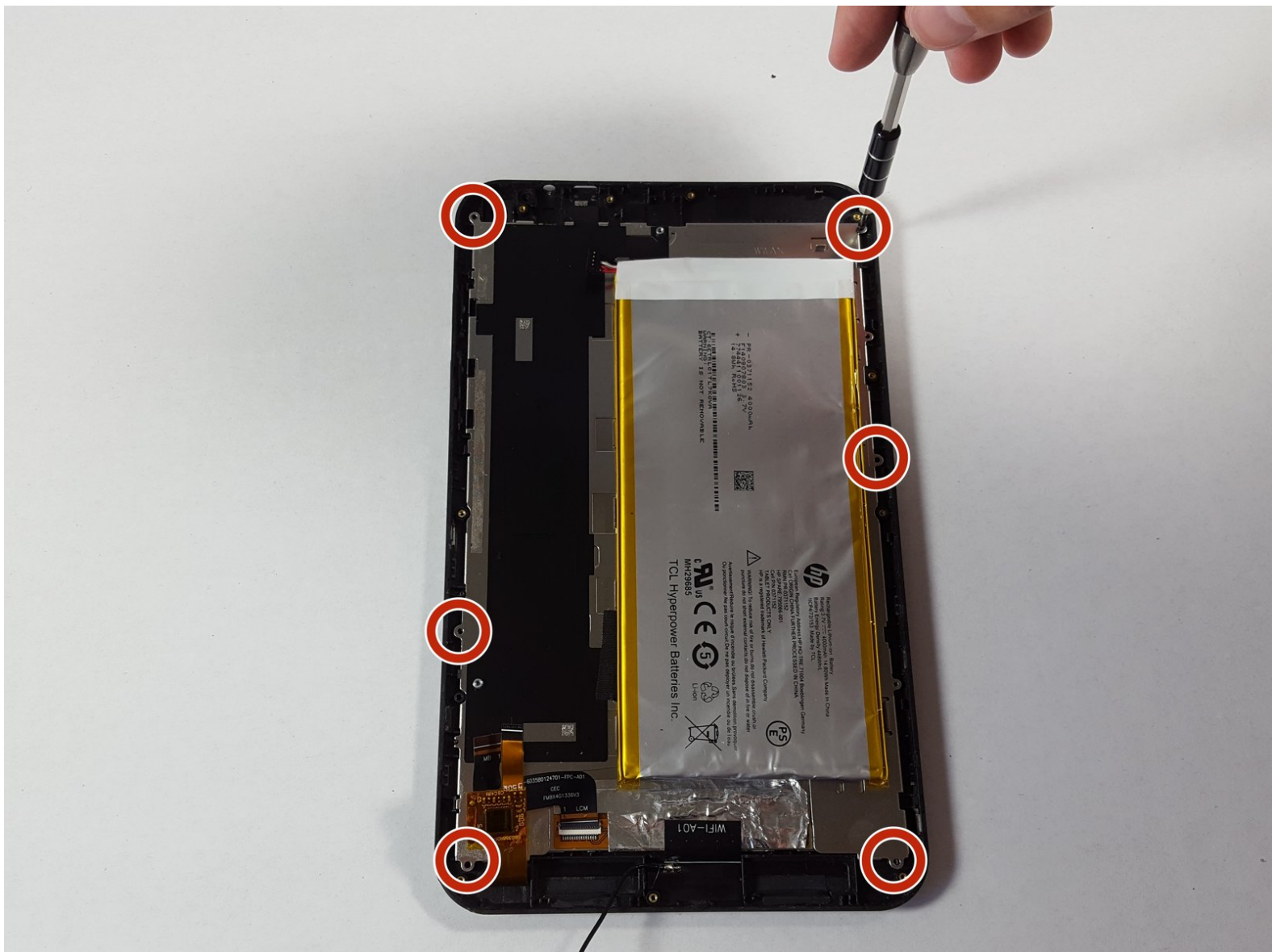




# HP Stream 8 Battery Replacement

This guide will give instructions on how to replace the battery in the HP Stream 8.

Written By: Nick Miller





## TOOLS:

- [Tweezers](#) (1)
  - [Phillips #00 Screwdriver](#) (1)
  - [Spudger](#) (1)
-

## Step 1 — Midframe



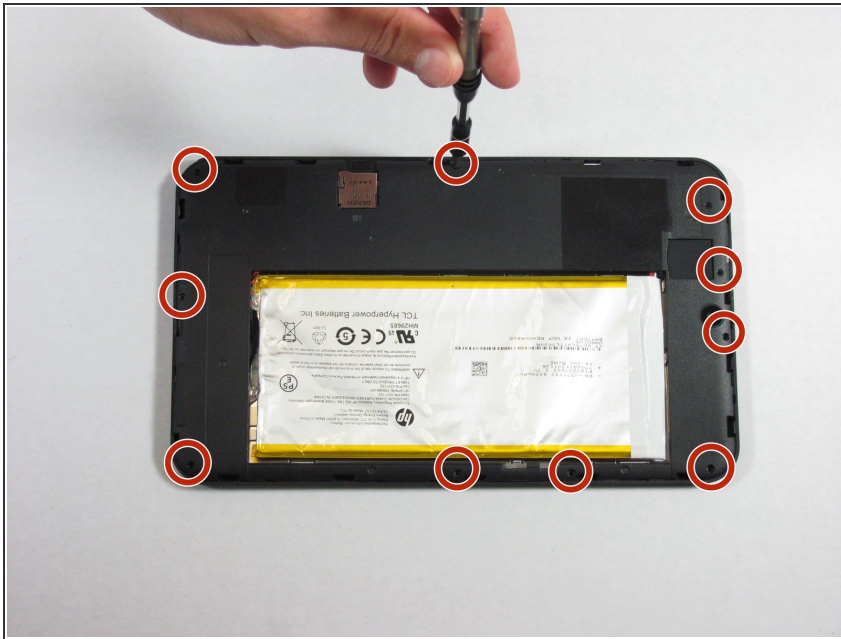
- Use your nail or a spudger to pry the back cover off of the device.

## Step 2



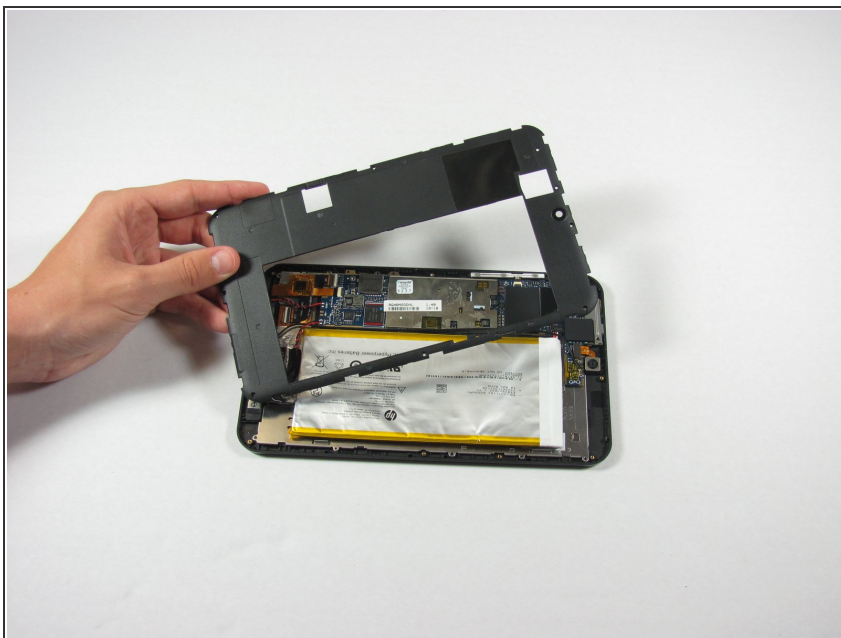
- Slide your finger around the rest of the back cover, lifting it completely off of the device.

### Step 3



- Remove ten Phillips #00 screws from the inside cover.

### Step 4



- Pry up the inside cover the same way as in the first step.

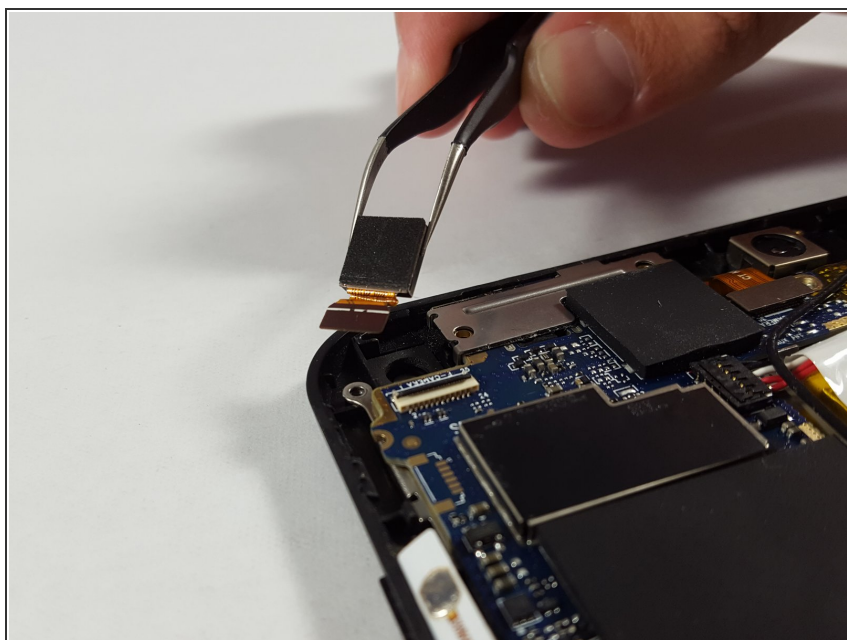


## Step 5 — Front-Facing Camera



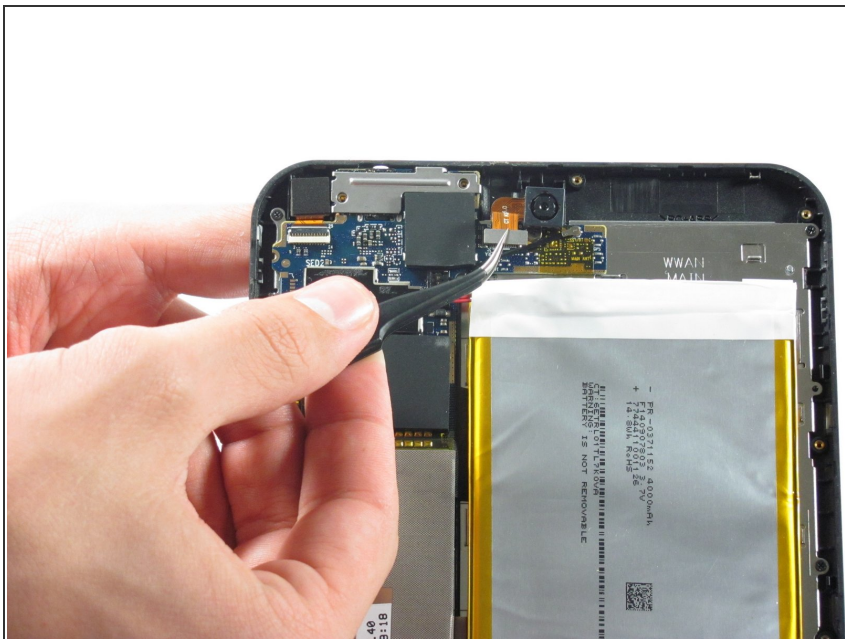
- Lift up on the small black tab at the connection point to unlock the flex ribbon cable using the tweezers.

## Step 6



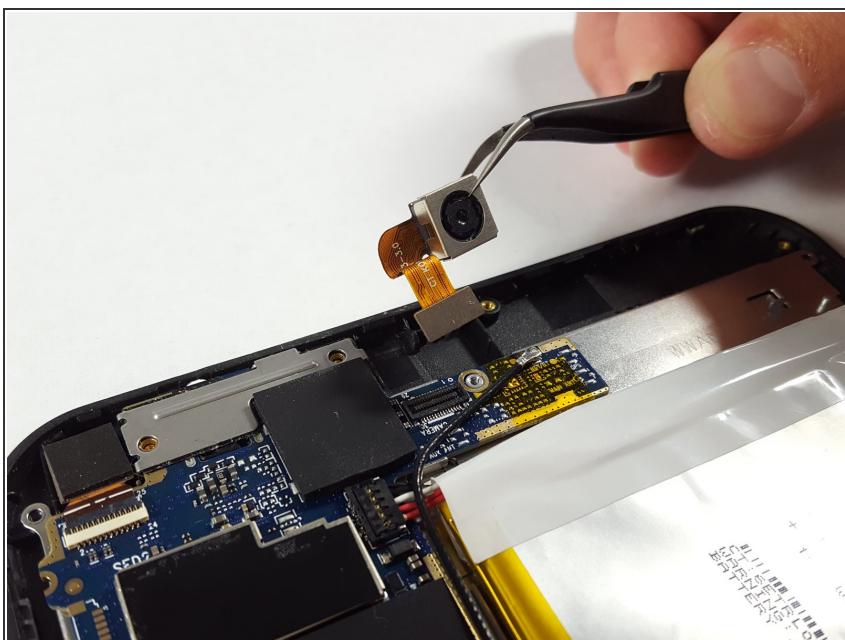
- Remove the front facing camera with tweezers.

## Step 7 — Rear-Facing Camera



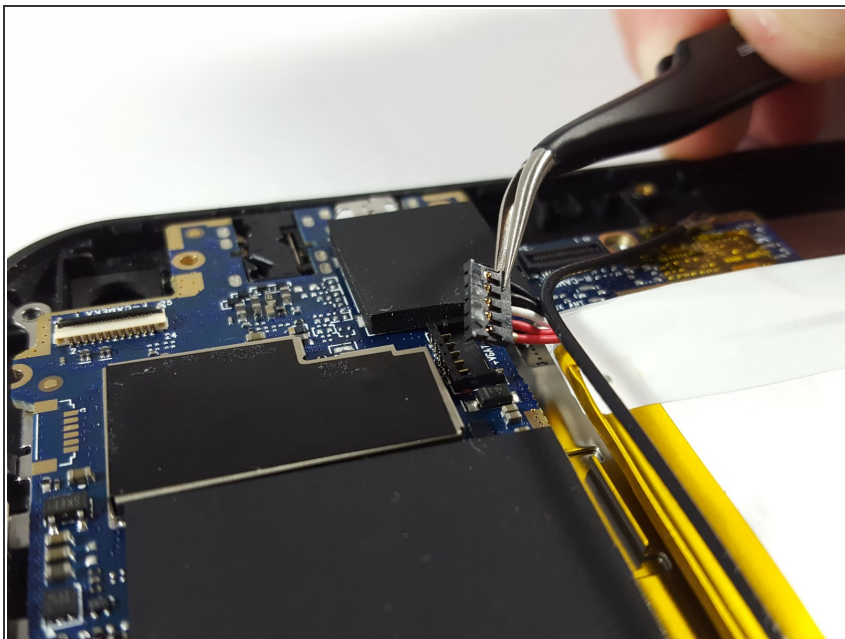
- Carefully pry up the gray metal piece on the end of the flex ribbon cable using tweezers.

## Step 8



- Remove the back facing camera with the tweezers.

## Step 9 — Motherboard



- Carefully remove the battery connector from the system board using the tweezers.

## Step 10



- Lift up on the small black tab to unlock the LCD screen flex ribbon cable using the tweezers.



## Step 11



- Carefully remove the LCD screen flex ribbon cable from the system board using the tweezers.

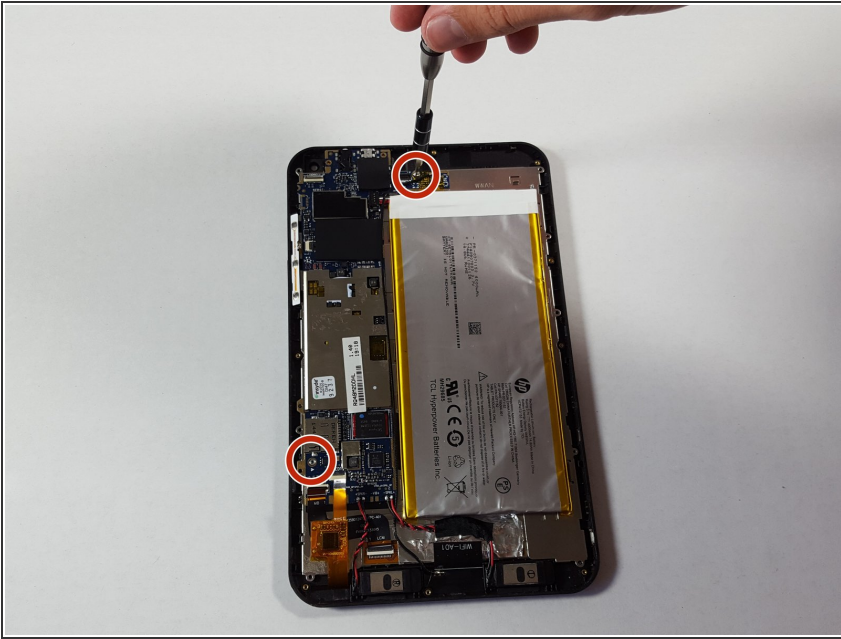
## Step 12



- Carefully remove the USB flex ribbon cable from the connection point on the system board using the tweezers.

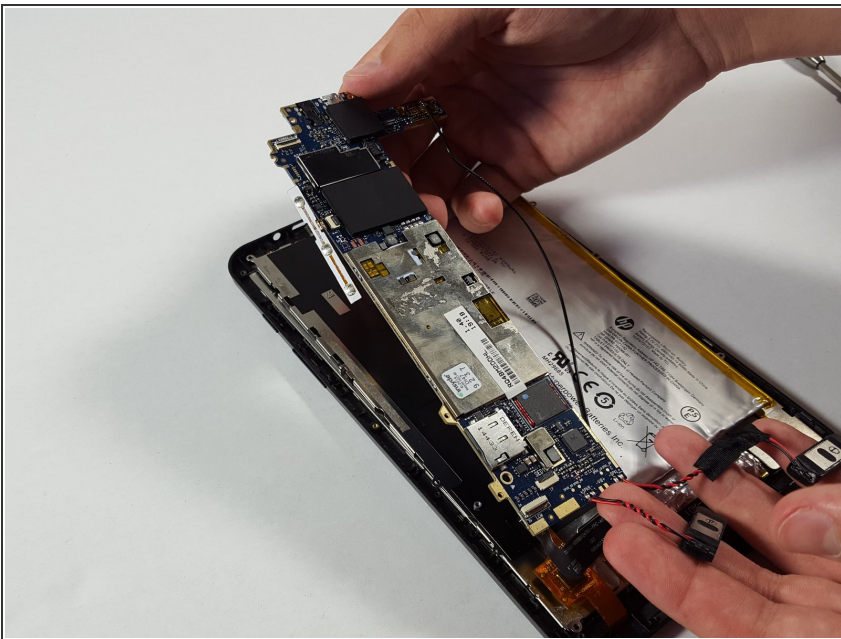


## Step 13



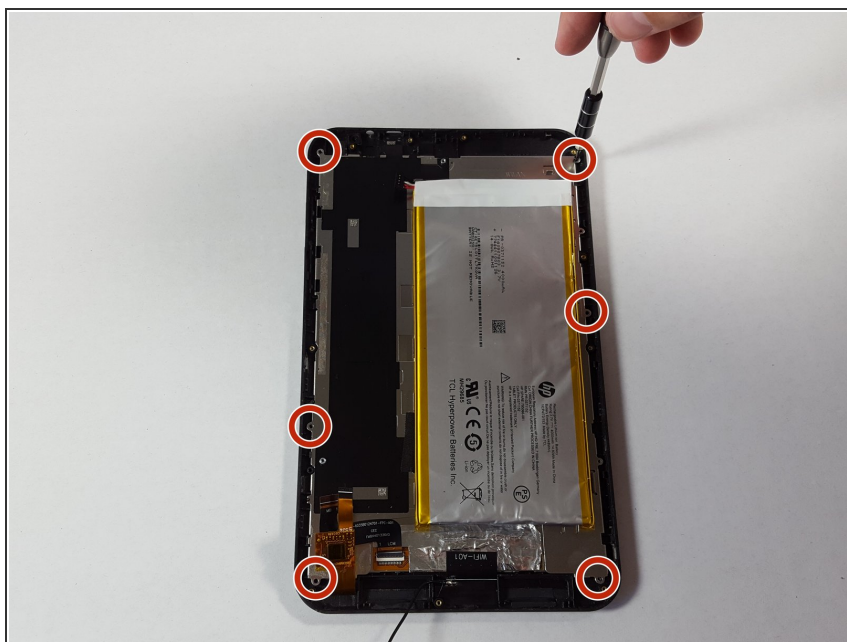
- Remove the two Phillips using the screwdriver with a PH00 Phillips head.

## Step 14



- Remove the motherboard from the device.

## Step 15 — Battery



- Remove the 6 PH00 Phillips screws.

## Step 16



- The battery can now be removed from the device.

To reassemble your device, follow these instructions in reverse order.