



HP Stream 8 Display Panel Cable Replacement

This guide will summarize how to replace the display panel cable in the HP Stream 8.

Written By: Ashley Eimers



INTRODUCTION

The guide details how to replace the display panel cable. The cable is important for the communication throughout the HP Stream 8.



TOOLS:

- [Phillips #00 Screwdriver](#) (1)
-

Step 1 — Display Panel Cable



- Use your nail to pry up the back cover of the device.

Step 2



- Fully remove the back cover.

Step 3



- Remove the 10 3mm screws using the Phillips #00 screwdriver.

Step 4



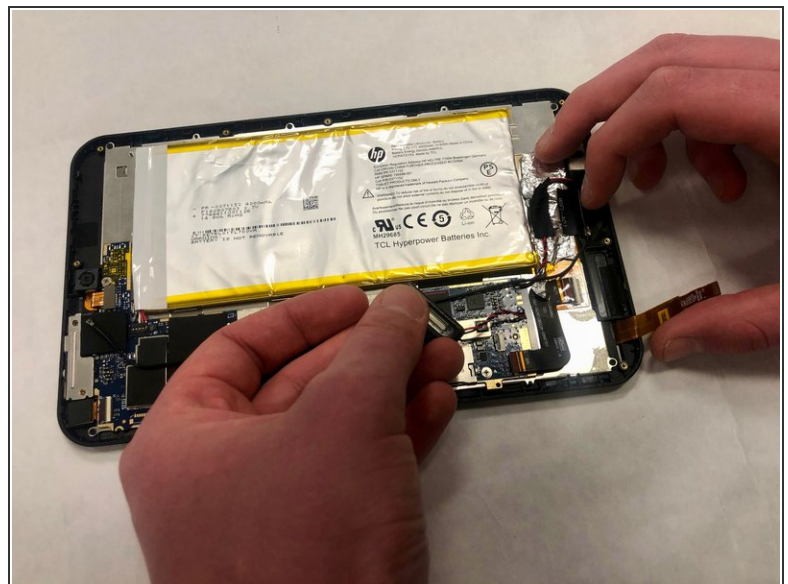
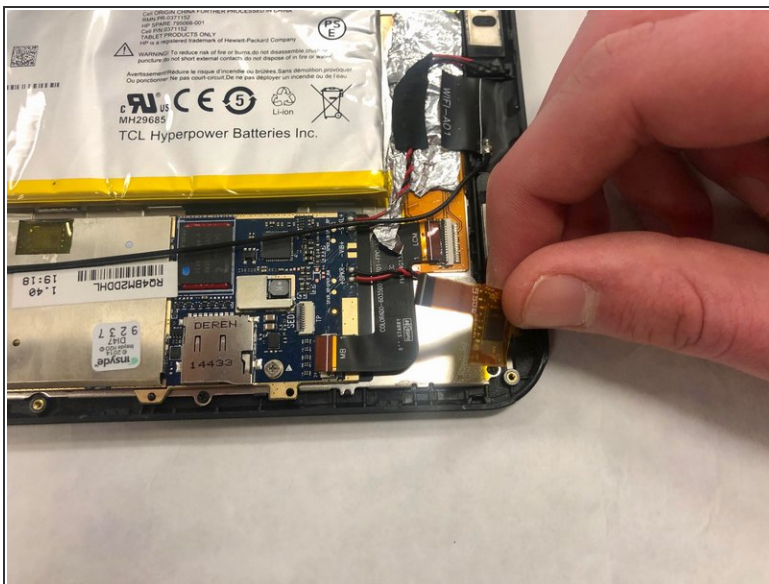
- Pry up the inside cover the same way as you did with the back cover.

Step 5



- Remove the USB flex ribbon cable from the connection point.

Step 6



- Carefully disconnect the display panel cable from the system board.

Step 7



- Remove the display panel cable.

To reassemble your device, follow these instructions in reverse order.