



HP Stream 8 Front Facing Camera Replacement

This guide will give instructions on how to replace the front facing camera on the HP Stream 8.

Written By: Nick Miller





TOOLS:

- [Phillips #00 Screwdriver](#) (1)
 - [Tweezers](#) (1)
-

Step 1 — Midframe



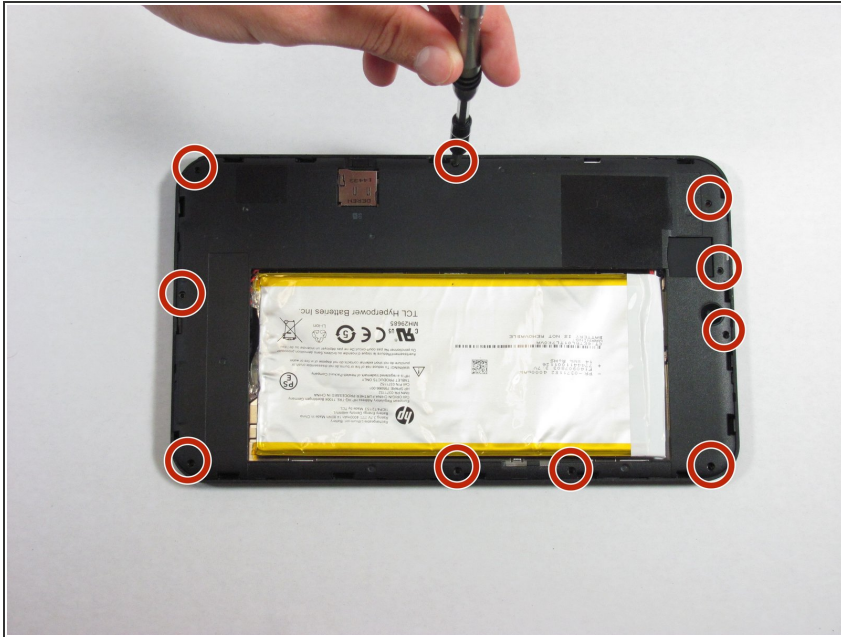
- Use your nail or a spudger to pry the back cover off of the device.

Step 2



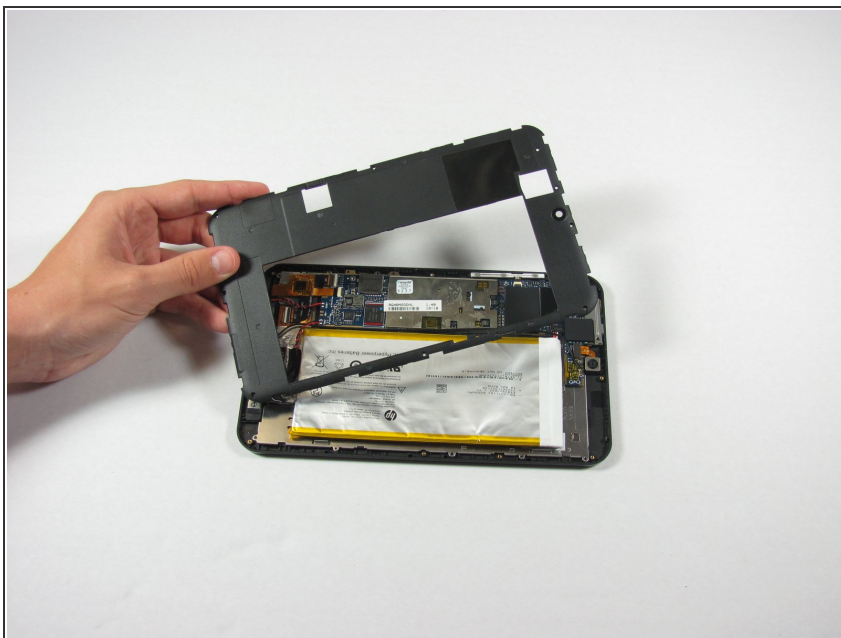
- Slide your finger around the rest of the back cover, lifting it completely off of the device.

Step 3



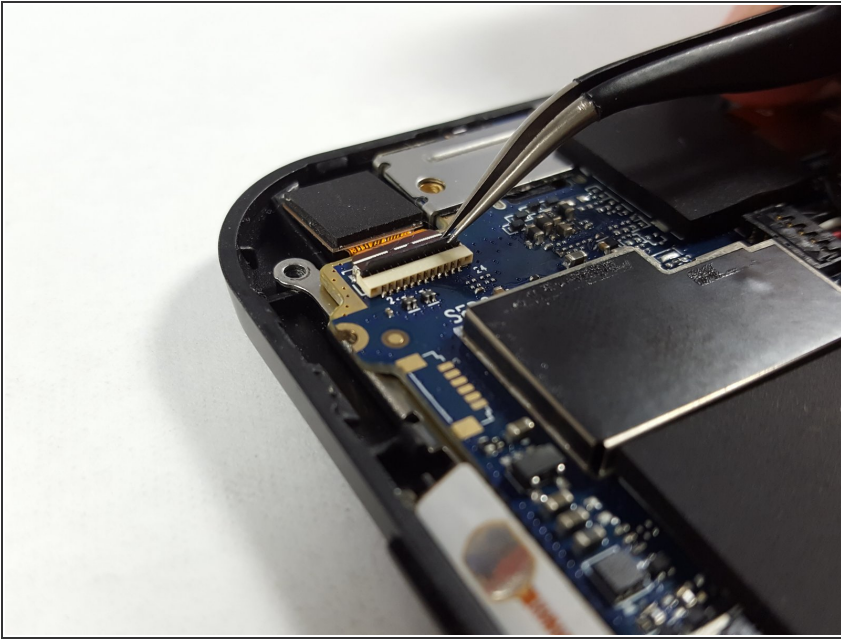
- Remove ten Phillips #00 screws from the inside cover.

Step 4



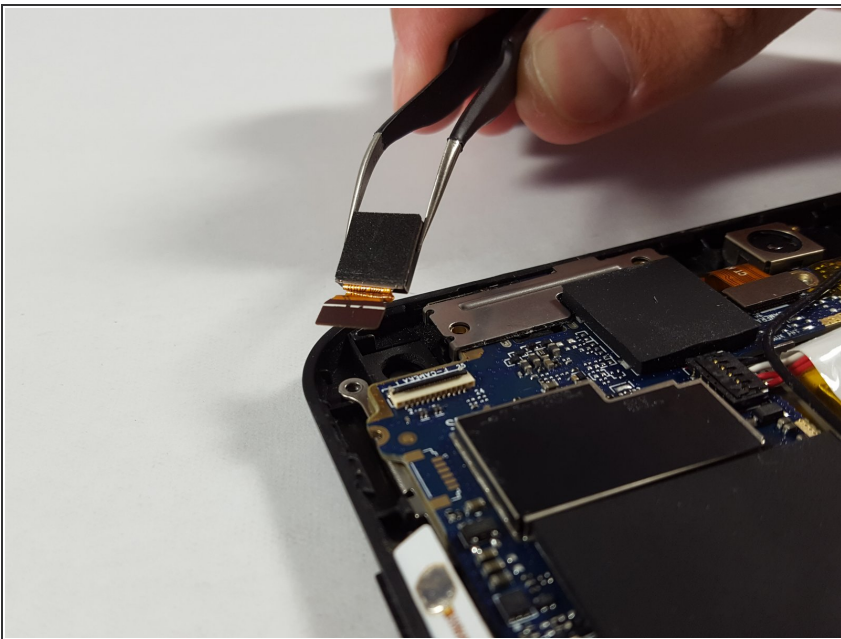
- Pry up the inside cover the same way as in the first step.

Step 5 — Front-Facing Camera



- Lift up on the small black tab at the connection point to unlock the flex ribbon cable using the tweezers.

Step 6



- Remove the front facing camera with tweezers.

To reassemble your device, follow these instructions in reverse order.