



HP Stream 8 Rear-facing camera Replacement

This guide will give the steps to replace the rear facing camera on the HP Stream 8.

Written By: Nick Miller





TOOLS:

- [Phillips #00 Screwdriver](#) (1)
 - [Tweezers](#) (1)
-

Step 1 — Midframe



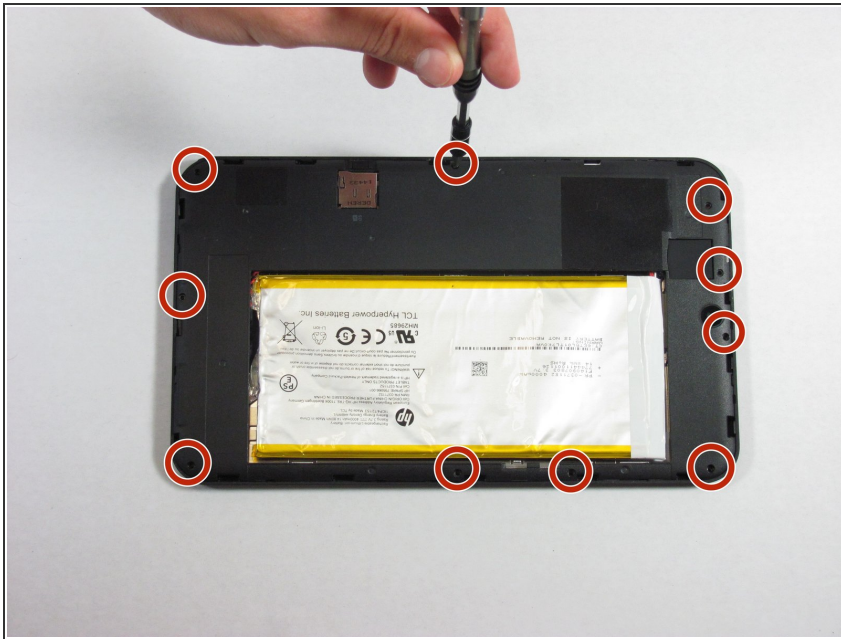
- Use your nail or a spudger to pry the back cover off of the device.

Step 2



- Slide your finger around the rest of the back cover, lifting it completely off of the device.

Step 3



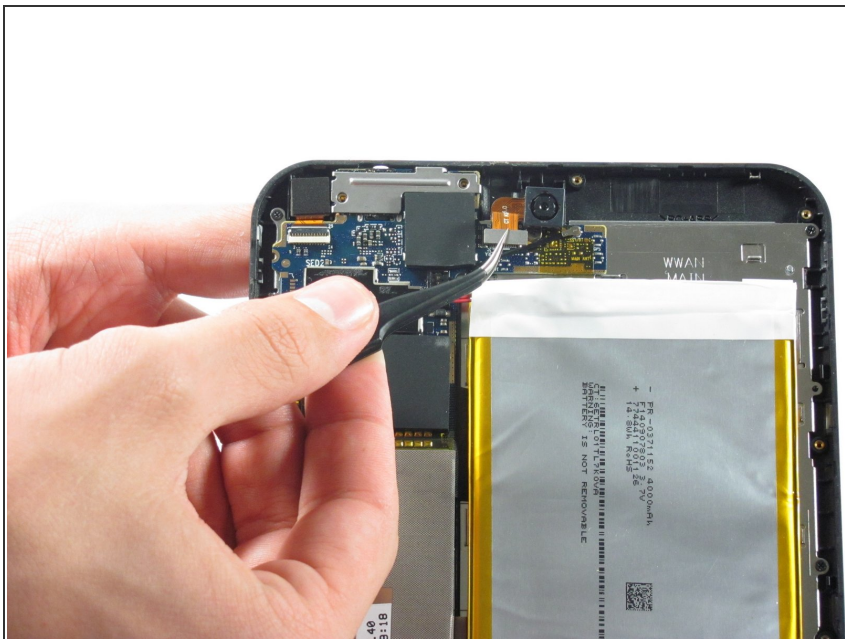
- Remove ten Phillips #00 screws from the inside cover.

Step 4



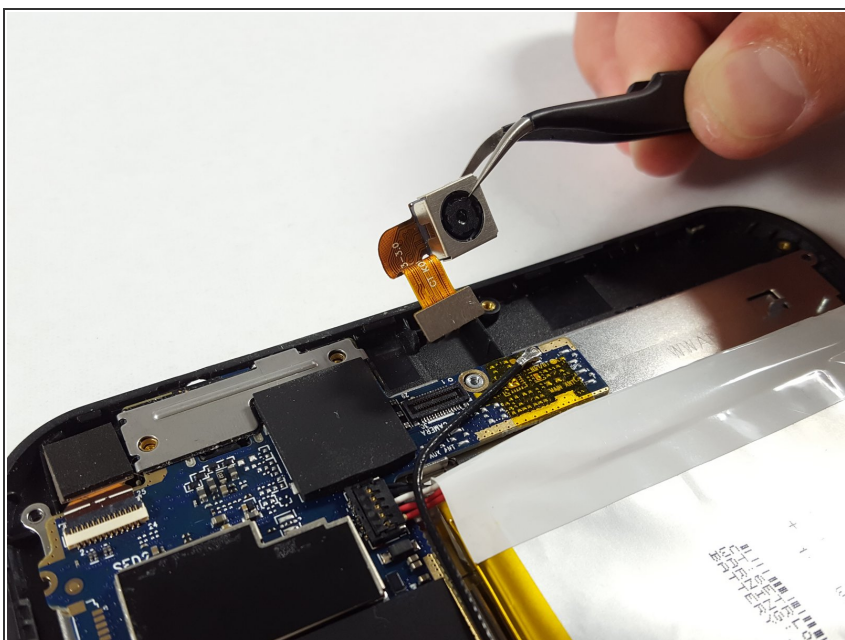
- Pry up the inside cover the same way as in the first step.

Step 5 — Rear-Facing Camera



- Carefully pry up the gray metal piece on the end of the flex ribbon cable using tweezers.

Step 6



- Remove the back facing camera with the tweezers.

To reassemble your device, follow these instructions in reverse order.