



HP Stream x360 11-p015wm Battery Replacement

How to replace an HP Stream 11 x360 -p015wm battery.

Written By: DaisyHaskell

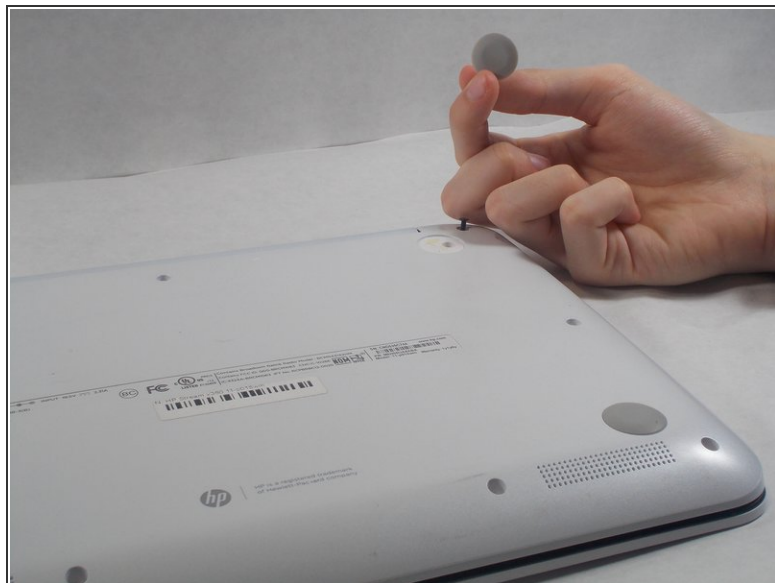
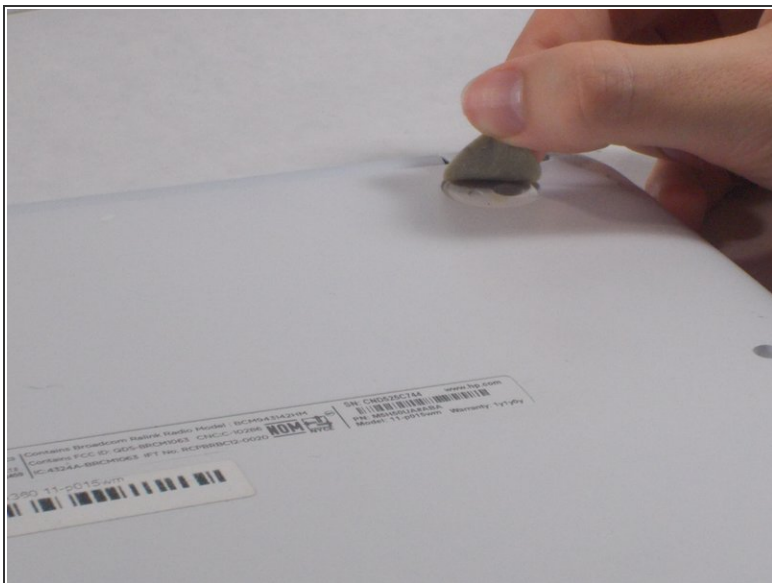




TOOLS:

- [iFixit Opening Tools](#) (1)
- [JIS #1](#) (1)
- [Tweezers](#) (1)

Step 1 — Back Cover



- Orient the laptop to have the back cover facing upwards.
- Remove the four rubber pads located in each corner.

Step 2



- **i** Tool required: [JIS #1 Screwdriver](#)
- Using the screwdriver, remove all of the exposed screws.

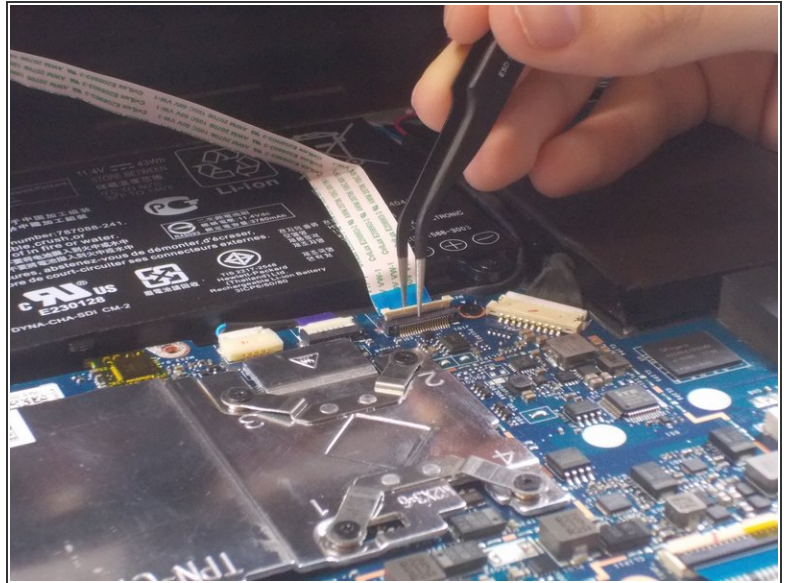
Step 3



 Tool required: [iFixit opening tool](#)

- Open the laptop and orient the keyboard facing upward.
- Slowly wedge the opening tool into the gap between the keyboard and the back cover.
- After loosening the back cover, close the laptop and orient the back cover facing upward. Open the cover.

Step 4

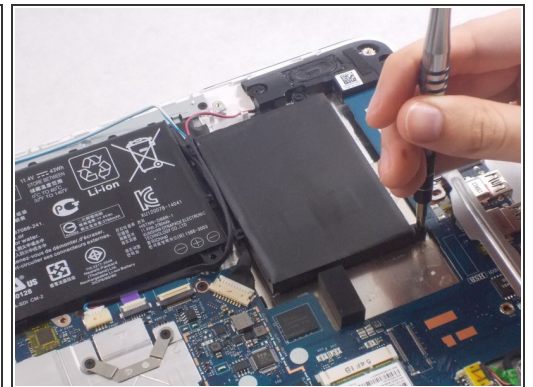
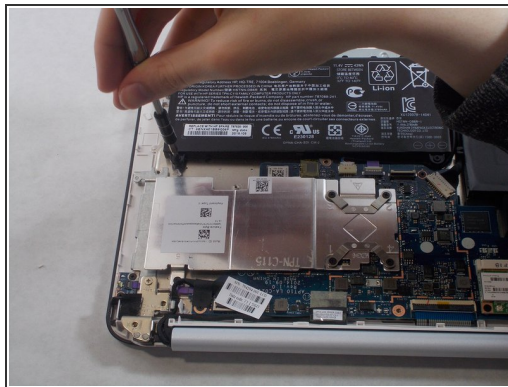


✦ This is a good time to clean any accumulated dust or debris. Use [this link](#) on tips for cleaning.

i Tool required: [Tweezers](#)

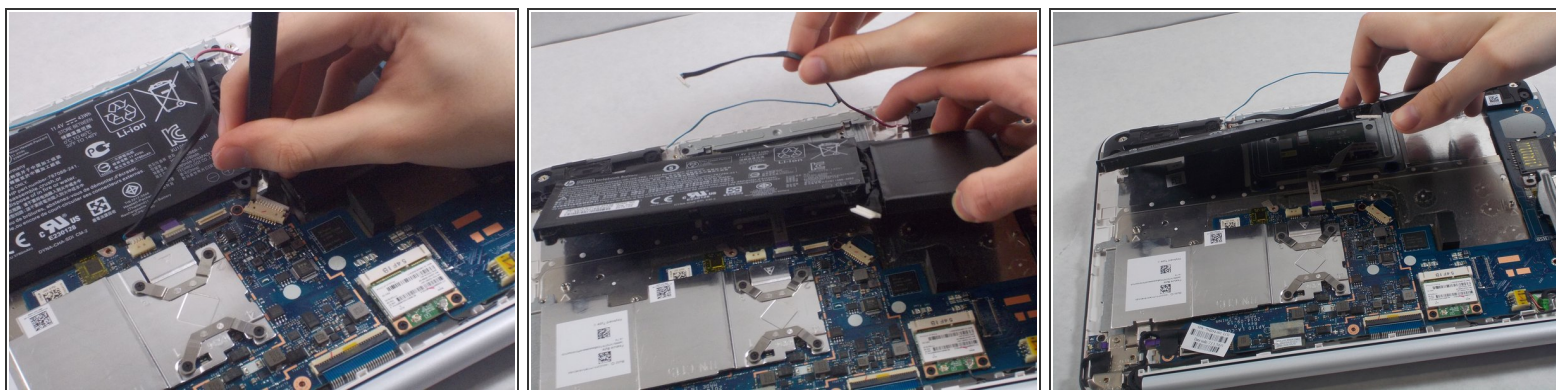
- Carefully use tweezers to remove the audio jack connector from the motherboard.

Step 5 — Battery



- Use the JIS J1 screwdriver to remove the 6.5 mm screws surrounding the battery.

Step 6



- Using the iFixit tweezers, remove the cable connecting the battery to the motherboard.
- Remove the wire located on the top side of the battery.
- All connections should be removed. Simply remove the battery from the computer.

To reassemble your device, follow these instructions in reverse order.