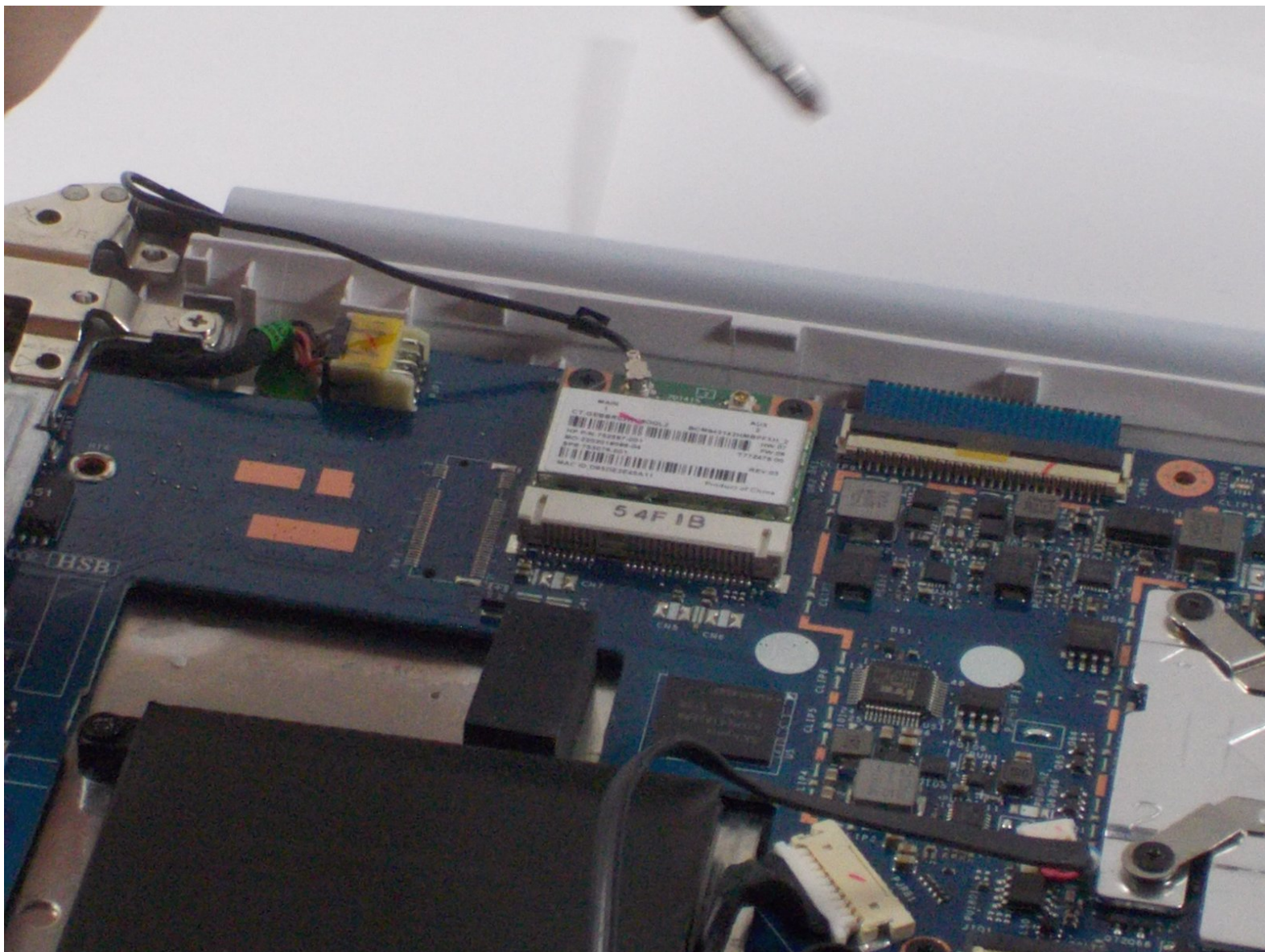




HP Stream x360 11-p015wm Wireless Adapter Replacement

How to replace a HP Stream x360 11-p015wm wireless adapter.

Written By: DaisyHaskell

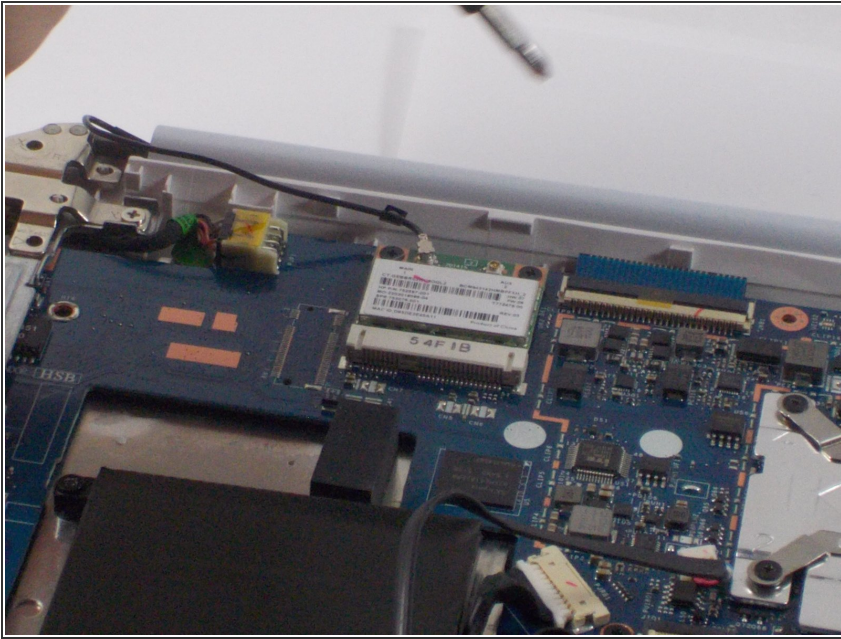




TOOLS:

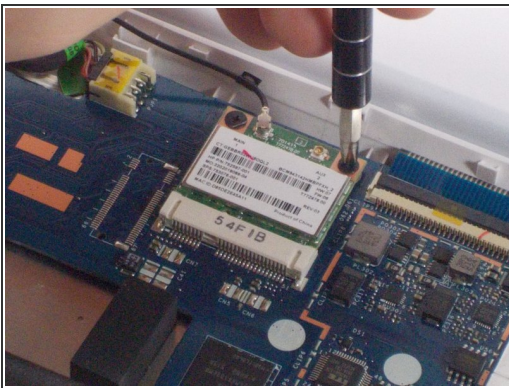
- [JIS #1](#) (1)
-

Step 1 — Wireless Adapter



- Locate your Wireless Adapter on the back left section of your laptop's rear end.

Step 2



- Use JIS J1 screwdriver to remove both exposed screws.
- Remove the Wireless Adapter from the laptop once screws are removed.

To reassemble your device, follow these instructions in reverse order.