



HP TouchPad Upper Antenna Replacement

Replace the upper antenna in your HP TouchPad.

Written By: Andrew Bookholt



INTRODUCTION

Use this guide to replace the antenna near the top left corner of your TouchPad.



TOOLS:

- [Metal Spudger Set](#) (1)
 - [iFixit Opening Tools](#) (1)
-

Step 1 — Front Panel Assembly



- In the following steps, you will use a metal spudger to lift the front panel out from the rear case of your TouchPad.


⚠ The front panel is held in by seven clips (boxed in red) that are lightly anchored to the rear case. When you remove the front panel assembly, you are bound to break either the clips or their supports attached to the rear case. We will update this guide as we find replacement parts or a better method to remove the panel.

⚠ As you remove the front panel assembly, also be careful not to damage the ambient light sensor (boxed in yellow) or the two antennas (boxed in orange).

Step 2



- Insert a flat metal spudger in the gap between the rubber outer ring on the front panel assembly and the black plastic rear case near the USB connector.
- Pry the front panel assembly up from the rear case, being careful not to damage the LCD or the glass panel.

 As you work through the following steps, insert your metal spudger and pry the front panel up, but do not try to slide the spudger along the gap you're creating. Always remove your spudger, then insert it at another spot and pry upward.

Step 3



- As in the previous step, use a spudger to pry the front panel up from the rear case along its long edge on the volume button side of the TouchPad.
- Continue to pry the front panel assembly up along the volume button side of the TouchPad until there is a gap between it and the rear case.

Step 4



- Pry up the front panel assembly along the top edge of the TouchPad.

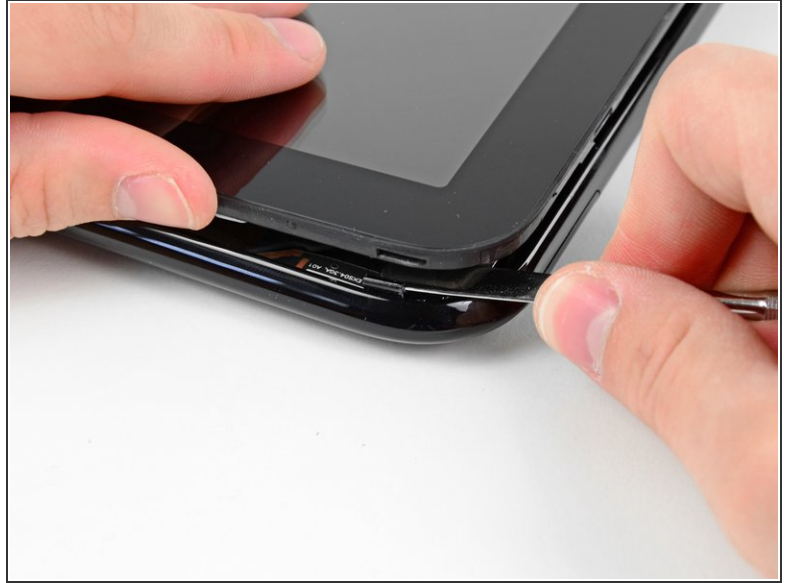
⚠ Be careful not to damage the ambient light sensor or the upper antenna.

Step 5



- Pry up the front panel along the edge closest to the home screen button.

Step 6



- Before lifting the free side of the front panel up from the rear case, you may need to release it from the plastic retaining clips holding it down.
- Use your metal spudger to pull the stuck retaining clips away from the edge of the front panel.

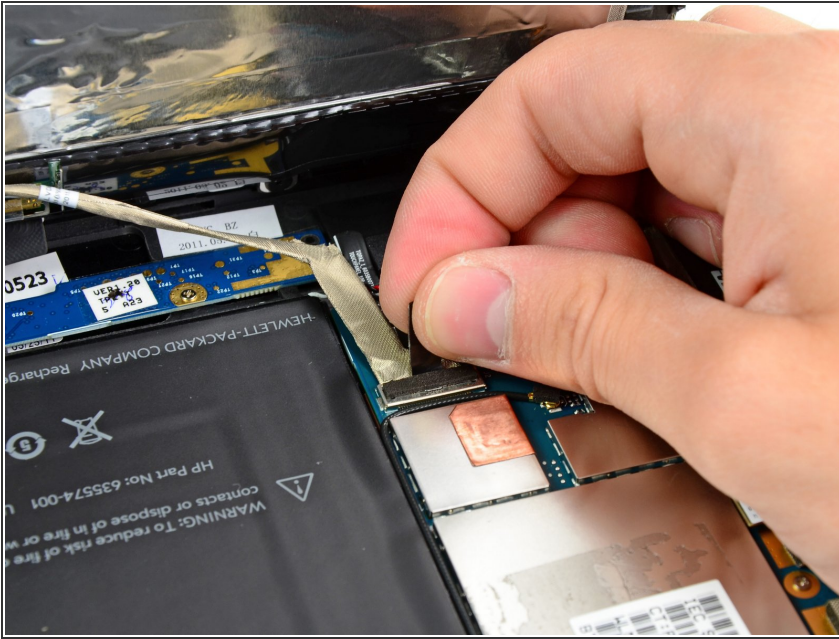
Step 7



- After freeing the retaining clips, lift the front panel assembly away from the rear case.

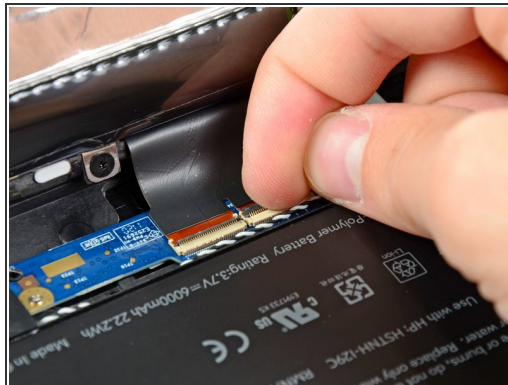
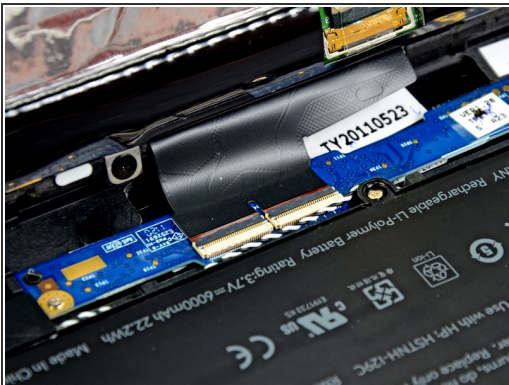
⚠ Do not try to remove the front panel assembly from the TouchPad just yet, as it is still connected to the motherboard.

Step 8



- Use the attached black tab to pull the display data cable straight up and out of its socket on the motherboard.
- ⚠ Pull the cable upwards and not parallel to the face of the motherboard. Doing otherwise may damage the socket on the motherboard.
- ⓘ Take care not to pull on the ribbon that is stuck by adhesive to the bottom of cable you are detaching. It does not need to be disconnected.

Step 9



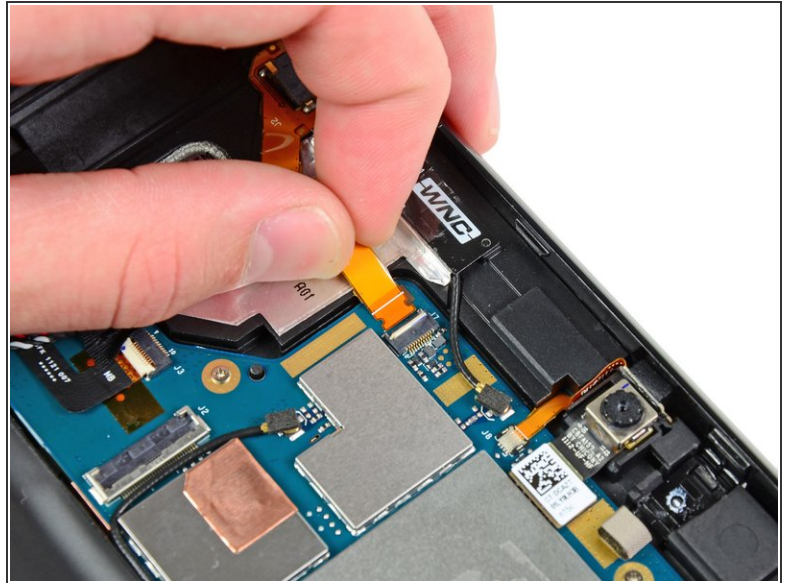
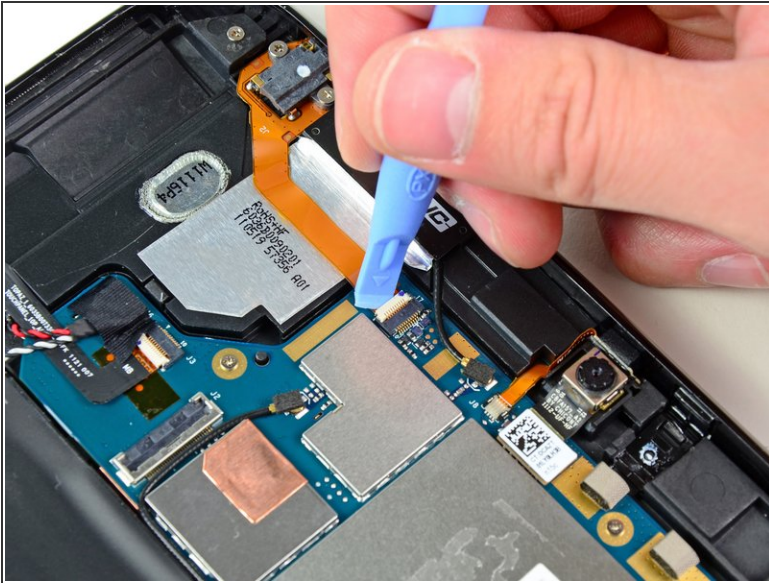
- Use your fingernail to carefully flip up the retaining flaps on the two digitizer ribbon cable ZIF sockets.
- ⚠ Be sure you are prying up on the hinged retaining flaps, **not** the sockets themselves.
- Pull the digitizer ribbon cable straight out of its two sockets on the motherboard.

Step 10



- Remove the front panel assembly from the rear case assembly.

Step 11 — Upper Antenna



- Use the edge of a plastic opening tool to flip up the retaining flap on the headphone jack ribbon cable ZIF socket.

⚠ Be sure you are prying up on the hinged retaining flap, **not** the socket itself.

- Pull the headphone jack ribbon cable out of its socket and bend the cable away from the large piece of EMI foil stuck to the top speaker.

Step 12



- Use a plastic opening tool to pry the upper antenna connector up from its socket on the motherboard.

Step 13



- Use a plastic opening tool to peel the upper antenna off the adhesive securing it to the top speaker.

Step 14



- Carefully peel the foil tape attached to the upper antenna off the top speaker.
- Remove the upper antenna from the TouchPad.

To reassemble your device, follow these instructions in reverse order.