



# HP TouchSmart 15-r015dx Screen Replacement

This guide aims to aid in the replacement of your HP TouchSmart 15 screen.

Written By: Gabriel Terrasas



---

## INTRODUCTION

Use this guide to lead in the replacement of your HP TouchSmart 15 screen.

---



### TOOLS:

- [Metal Spudger](#) (1)
  - [64 Bit Driver Kit](#) (1)
-

## Step 1 — Screen



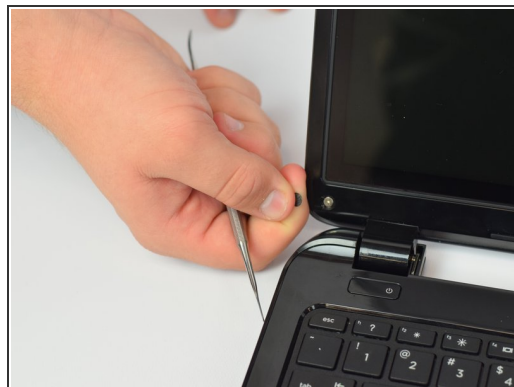
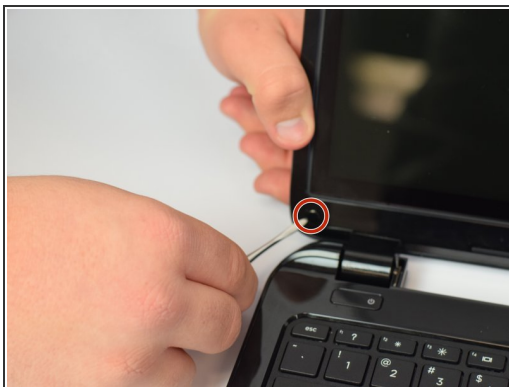
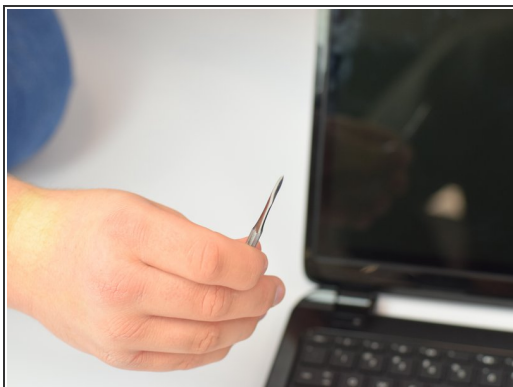
- Acquire the **metal spudger** and a **Precision Magnetized Driver with J1 size bit**.
- Flip your HP TouchSmart 15 over.

## Step 2



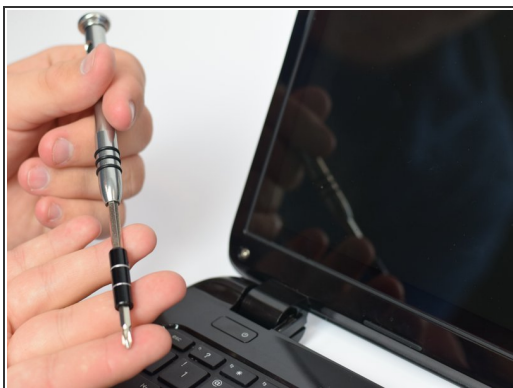
- Locate tabs on the underside of the laptop.
- Push both tabs towards the center of the laptop and pull away to remove battery.

## Step 3



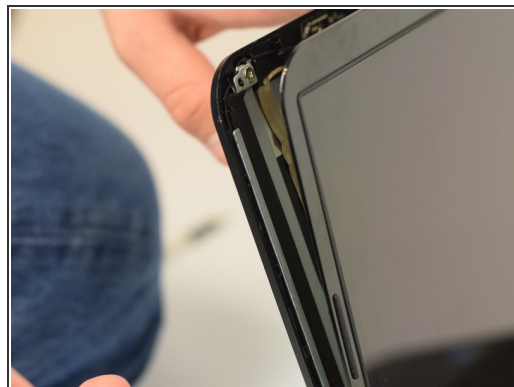
- Take the sharp end of the **pry tool** and pop out the black screw cover.
- Repeat on opposite side.

## Step 4



- Take the **Precision Magnetized Driver with J1 size bit** and unscrew the screw.
- Repeat on opposite side.

## Step 5



- Using the **pry tool**, begin to separate the touchscreen from the plastic backing.

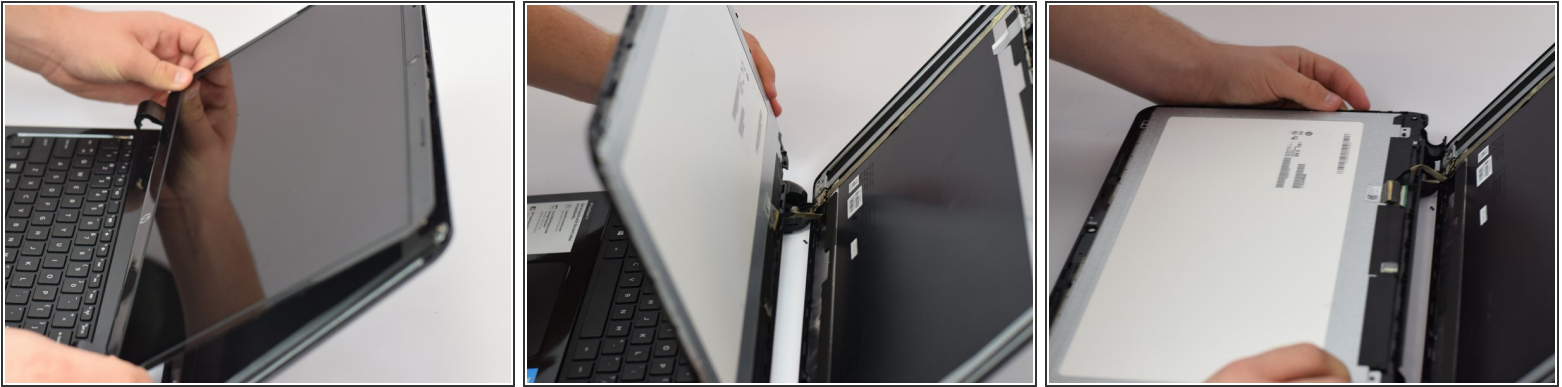
## Step 6



- Close the laptop and flip it over once again.
- Continue to pry the touchscreen from the plastic backing in the hinged area of the laptop.

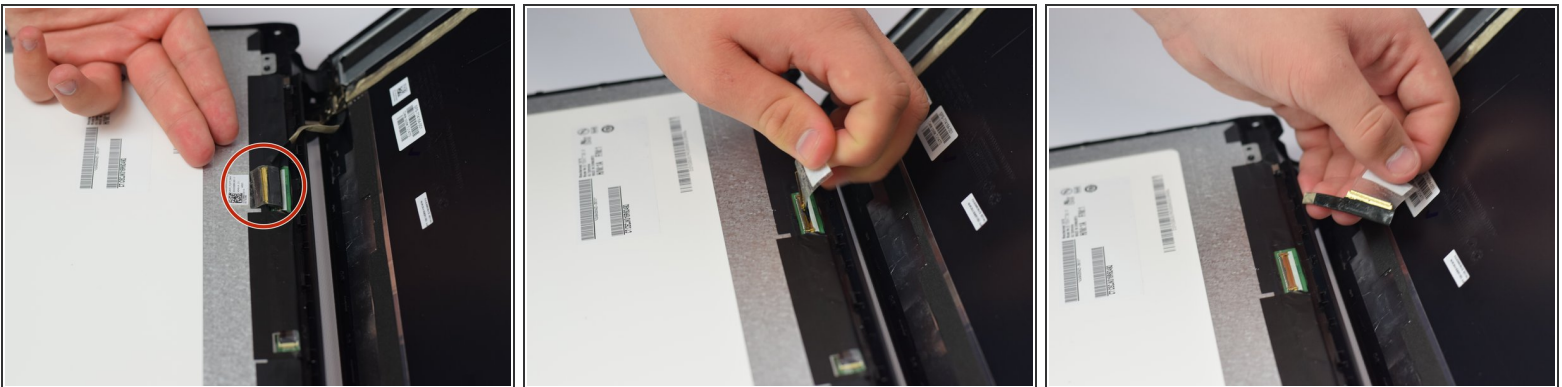


## Step 7



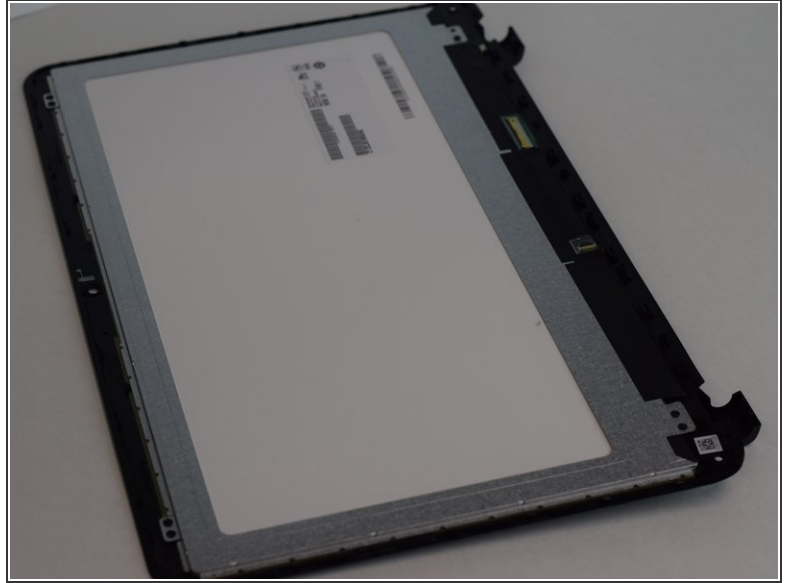
- Flip over the laptop and open it.
- Pull up on the separated touchscreen while pulling it away from the plastic backing.  
⚠ Be careful while laying down the touchscreen to not pull the connection point.
- Lay the touchscreen on the keyboard facedown.

## Step 8



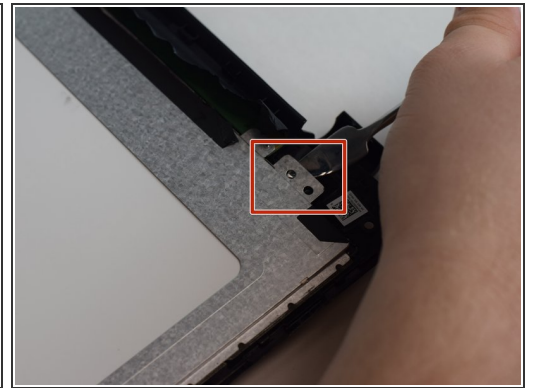
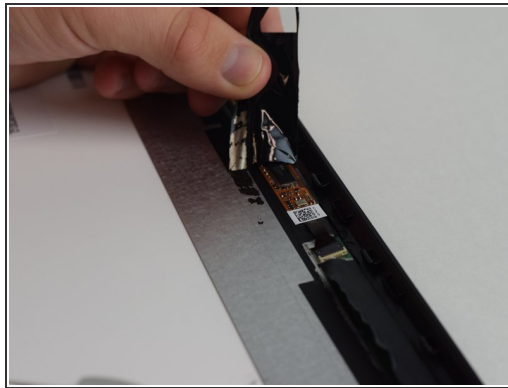
- Locate the connection point.
- Slowly and carefully peel off.

## Step 9



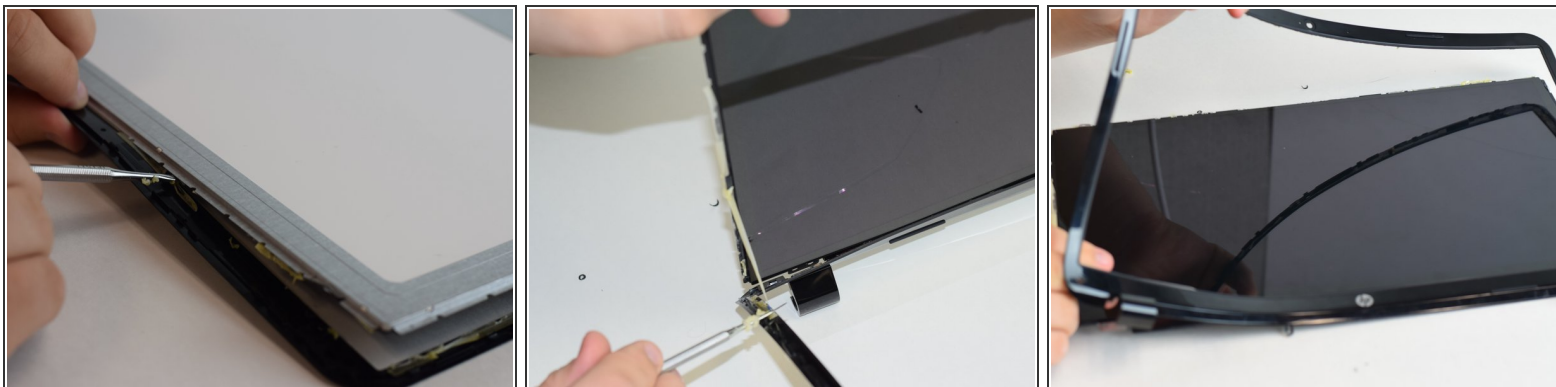
- Isolate the touchscreen from the keyboard.

## Step 10



- Begin by peeling off the black adhesive tape using the **pry tool**.
- Once adhesive tape is removed, use the **pry tool** to remove the tab in the corner. Repeat in each corner.

## Step 11



- Using the sharp end of the **pry tool**, separate the plastic from the screen.

## Step 12



- Now it is time to reassemble your device with a new screen.

To reassemble your device, follow these instructions in reverse order.