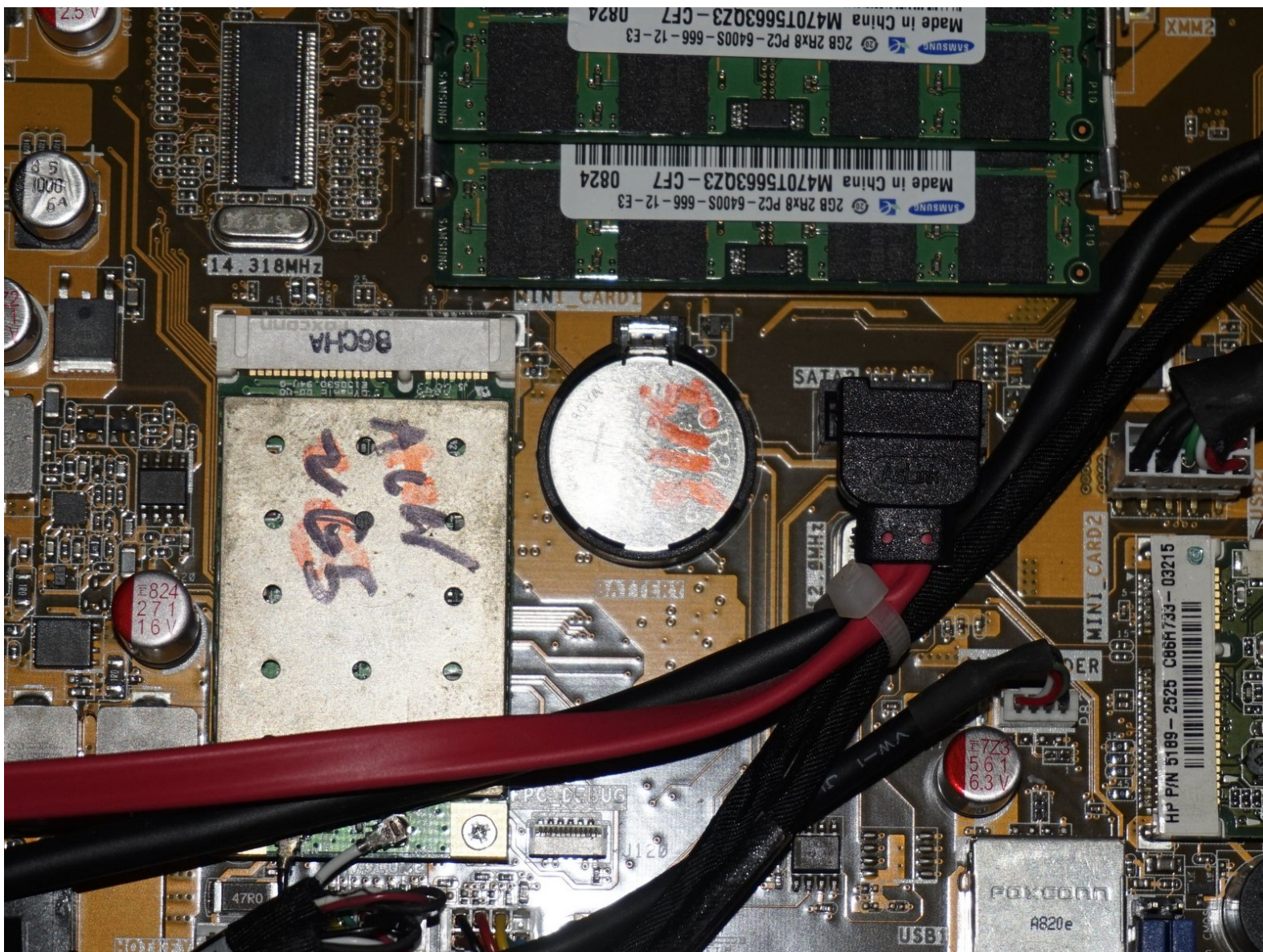




HP Touchsmart IQ506 CMOS Battery Replacement

CMOS battery in your HP IQ506 dead, or at the point it should be replaced? Here's how to replace it.

Written By: Nick



This document was generated on 2019-09-26 04:35:44 AM (MST).

INTRODUCTION

Do you need to change the CMOS battery in your HP IQ506, but do not feel comfortable using the quick and dirty method? If so, this version of the guide will be better for you.

While this method works and is probably easier for some readers, it also involves a lot of disassembly. While this procedure works, it is not an efficient way to replace the battery. With that being said, this procedure can be used for battery replacement.

Due to the complexity of this method, you may have to spend a fair bit of time disassembling the system to access the battery and replace it. Depending on how familiar you are with it, you may be able to knock this down significantly.



TOOLS:

- [64 Bit Driver Kit](#) (1)
- [Heavy-Duty Spudger](#) (1)

Not strictly required. This may be required if the machine was never serviced before.

- [ESD Safe Tweezers Blunt Nose](#) (1)

Not strictly required. These come in handy if you can't unclip the battery by hand.



PARTS:

- [CR2032 Lithium Battery](#) (1)

Step 1 — Unplug the system



- Unplug the system from the power brick.

Step 2 — Remove the Wireless keyboard receiver



- ★ I did not get the original keyboard with my system and the receiver mine came with was broken. Since the HP OEM keyboard is end of life, I chose to install a USB hub because I cannot find a modern keyboard with a large receiver.

- To remove the back cover from the system, the keyboard receiver must be removed. To do this, pull the ab on the case down. Once you do this,

it should come out of the internal USB port and free the back cover for removal.

Step 3 — Remove the RAM door



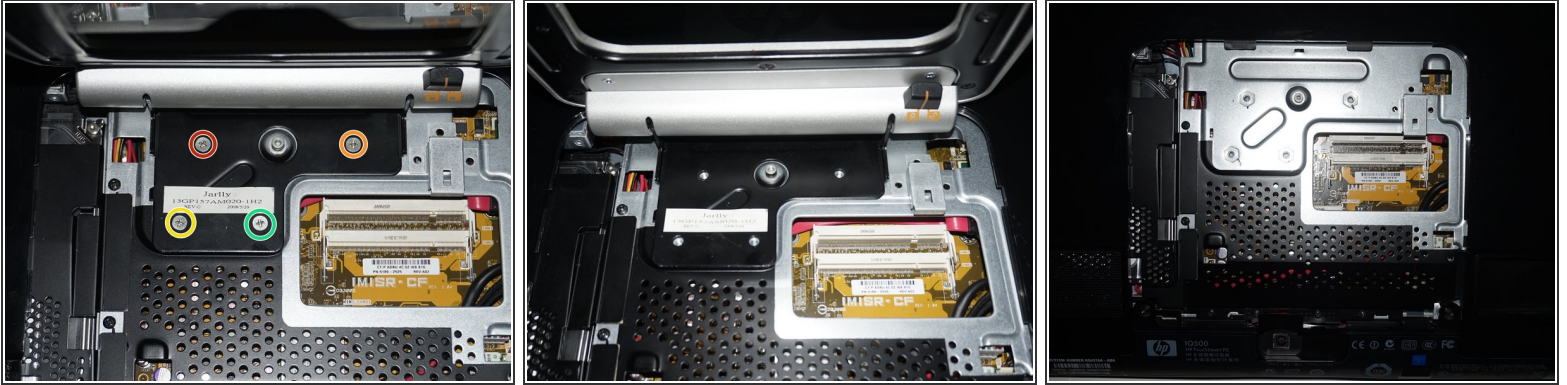
- Unscrew the RAM door from the system. Once you do this, unclip it from the bottom and pull forward.


Step 4 — Screwdriver placement tip



- ⓘ The top hinge screws can be difficult to get to. If you are using the classic iFixit screwdriver handle, the best workaround to this problem is to put the extension on and twist this part to remove the top screws. This is not required for the bottom screws.

Step 5 — Remove the stand



 Some people may find it easier to remove the top screws from the stand first. These screws can be difficult to remove.

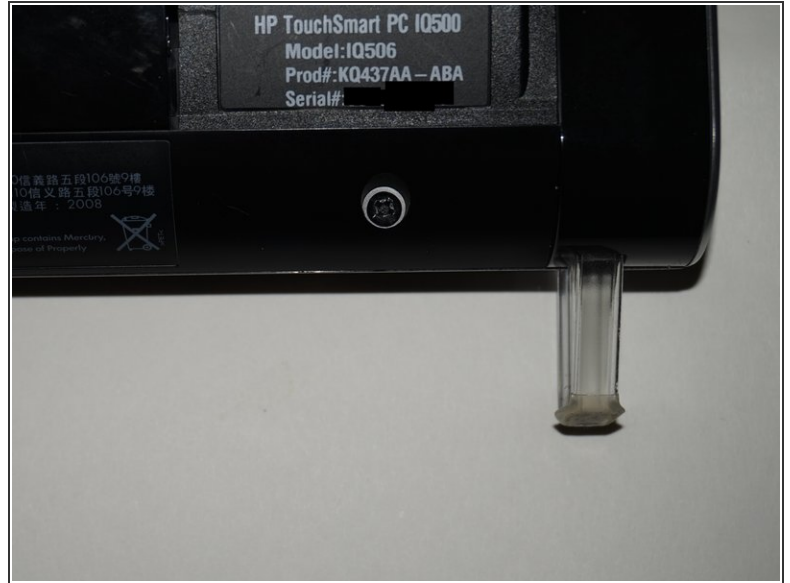
- Remove the stand from the system. Use a Phillips #1 screwdriver to loosen the 4 screws.

Step 6 — Remove the screws from the system



- Remove the 3 screws in the I/O bay of the system.
- Remove the 2 screws from under the RAM panel. **Note:** On my system, I am missing one screw.
- Remove the 2 screws from under the ODD cover. **Note:** If you are having trouble with this cover, use a spudger or plastic pry tool to remove it.

Step 7 — Remove the screws from the system 2



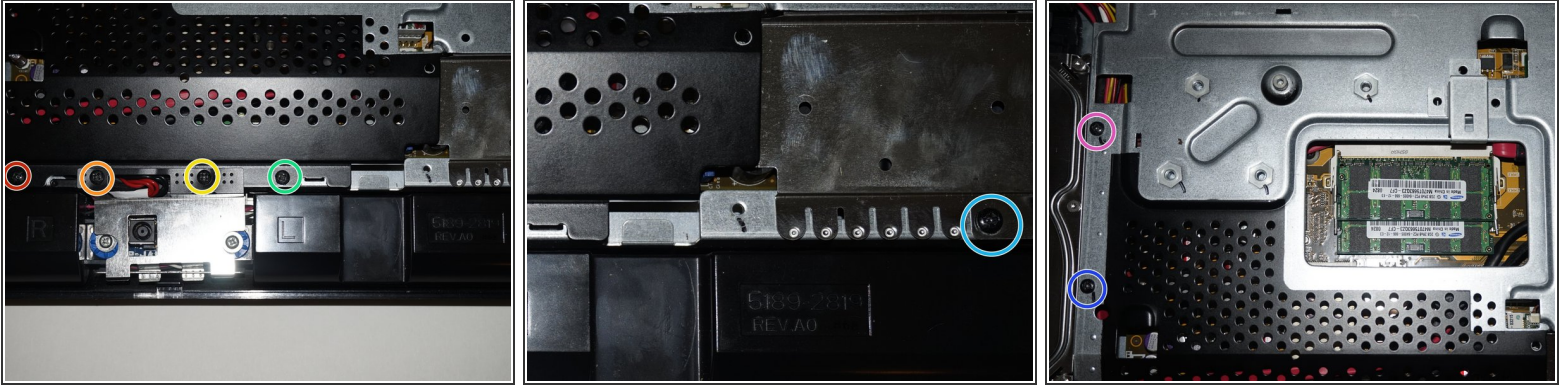
- Remove the 2 screws by the feet on the system chassis.

Step 8 — Remove the back from the system



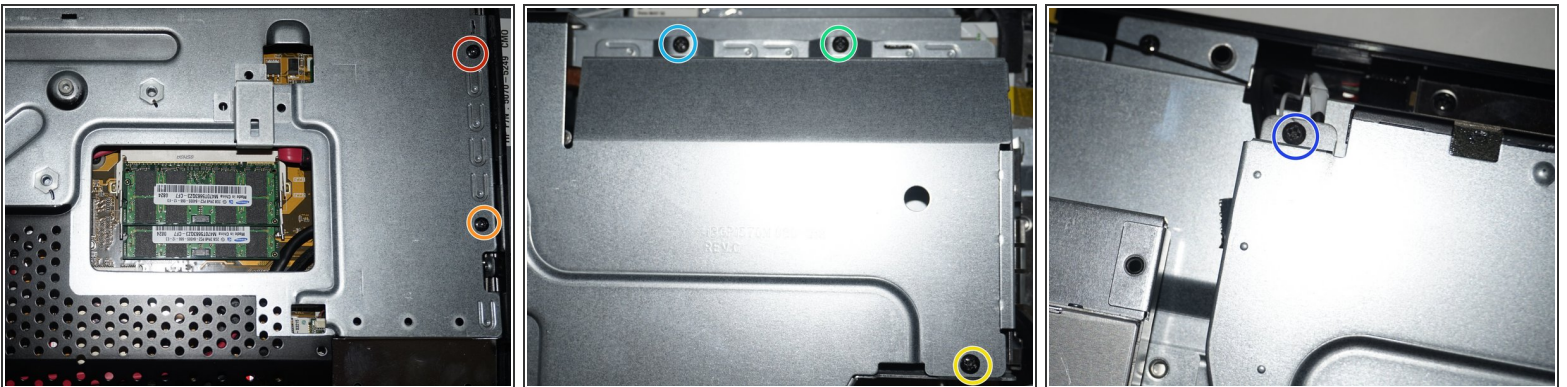
- ❗ If you are having a hard time removing the back of the system, a spudger can make it easier to unsnap the rear plastic cover.
- Remove the back from the system. To do this the quickest with the least amount of pain, remove the bottom and work your way up.

Step 9 — Remove the motherboard shield



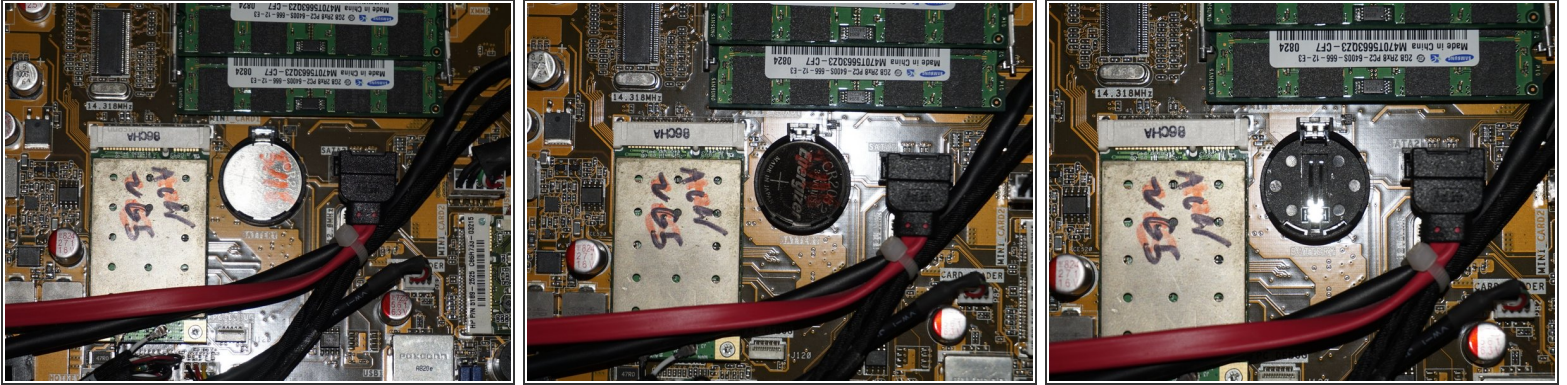
- i** The metal EMI shield over the power jack has to be removed to pull the motherboard shield off. This must be replaced when reassembling the system.
- Remove the **7** screws to reveal the motherboard and other major components. Use a **Phillips #1** screwdriver to do this.

Step 10 — Remove the motherboard shield 2



- Remove the **6** remaining screws from the motherboard shield. Use the same Phillips #1 screwdriver as you used the first time.

Step 11 — Remove the battery



- ☞ If you want to track when you replaced the battery, put a mark on the battery with the month and year so you know when it was replaced. If you cannot write on the battery, putting a hidden note under the memory panel is also an option.
- Push the tab on the battery in and then remove it. Put the new battery in the reverse way of removal.

To reassemble your device, follow these instructions in reverse order.