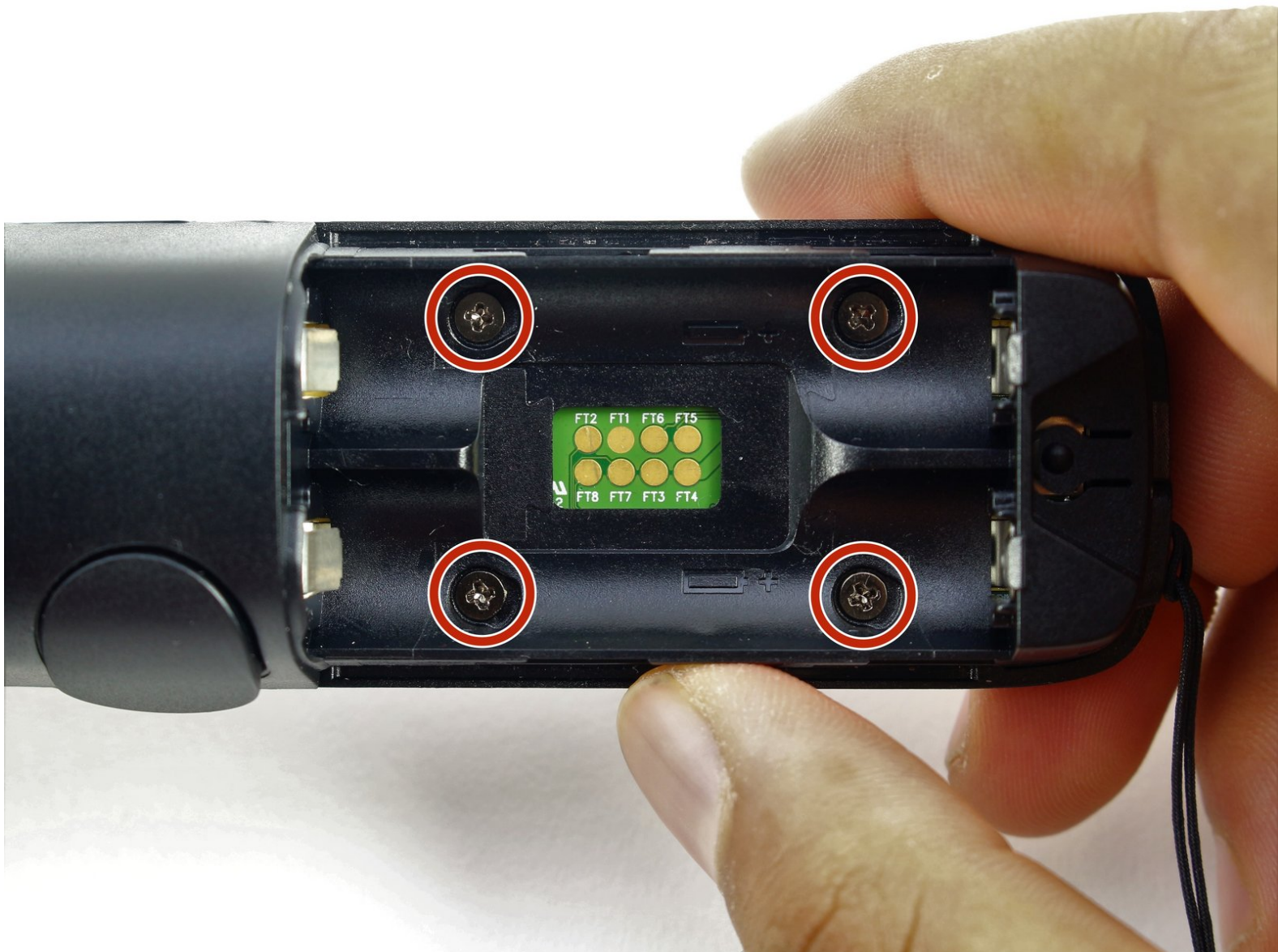




HP Windows Mixed Reality Controllers TPC-Q044 Shell Replacement

This guide goes over the steps needed to open up your HP Windows Mixed Reality Controllers TPC-Q044 to replace the shell.

Written By: Clement Cheung



INTRODUCTION

Follow this guide to open the housing on your HP Windows Mixed Reality Controllers TPC-Q044.

This guide goes over steps for the left controller, but the process is identical for the right controller.

Because most of the components in this device are enclosed within the housing, replacement for nearly all parts will require you to follow these instructions to access the internals.

TOOLS:

- [Spudger](#) (1)
 - [Phillips #00 Screwdriver](#) (1)
-

Step 1 — Batteries



- Slide the rear compartment cover in the direction of the arrow.
- ☑ If replacing batteries, ensure the (+) and (-) on the battery match the (+) and (-) labeled in the battery compartment.

Step 2 — Shell



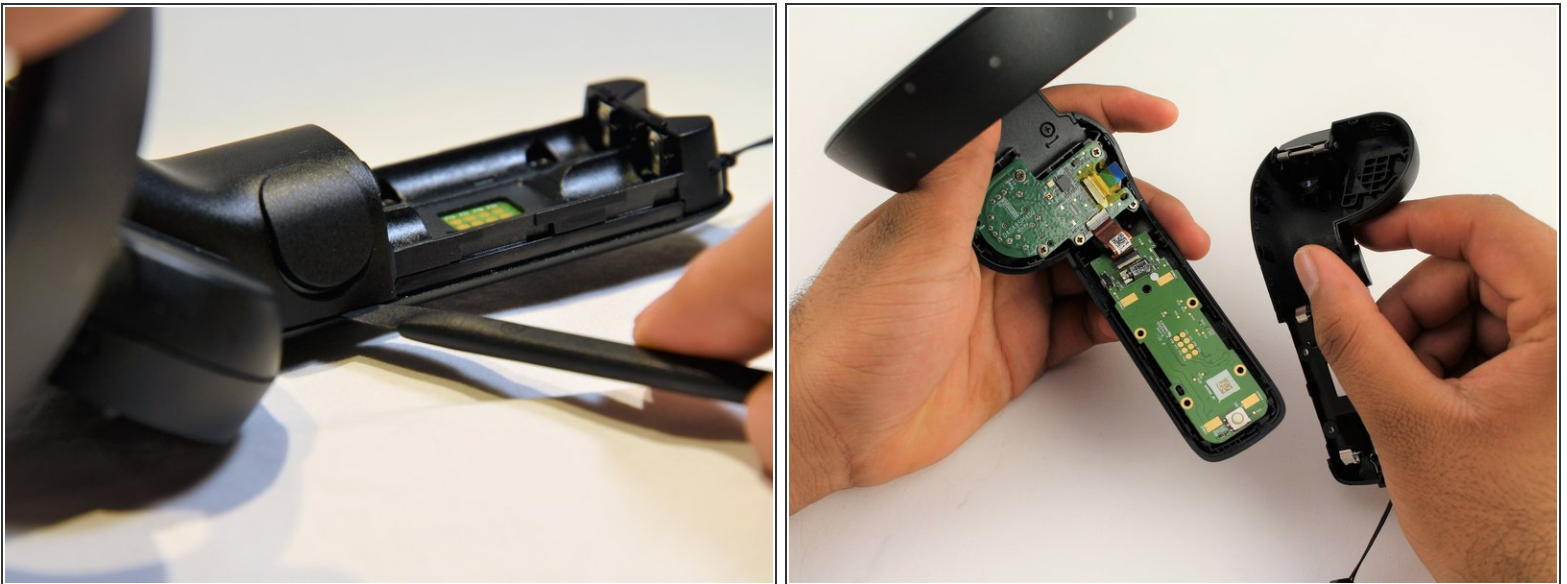
- Remove the four 4mm screws using a Phillips #00 screwdriver.

Step 3



- Grip the main body and pull the joystick outwards until the entire front panel pops off.
- Remove the 6mm screw in the corner of the joystick well using a Phillips #00 screwdriver.

Step 4



- Use a spudger to pry apart the two halves of the assembly.
- Work slowly, prying a small section at a time until the halves are completely separated.

To reassemble your device, follow these instructions in reverse order.