



# HP ZBook 15 Keyboard Replacement

This guide will show you how to remove the keyboard from your laptop.

Written By: Grant Terris



# INTRODUCTION

If the keys on your keyboard are sticky or broken, follow this replacement guide!



## TOOLS:

- [Phillips #0 Screwdriver](#) (1)
  - [Spudger](#) (1)
-

## Step 1 — Battery



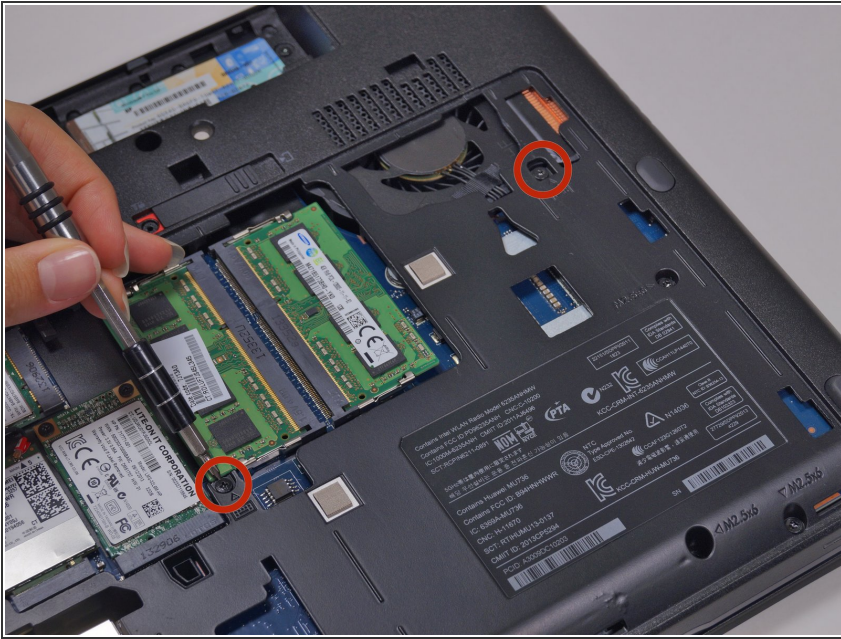
- Flip the laptop over.
- Slide the lever with the battery symbol beside it firmly until the battery pops out.
- Remove the battery from the laptop.

## Step 2 — Back Cover



- Slide the right lever firmly to the right.
- Slide the cover towards yourself to remove it.

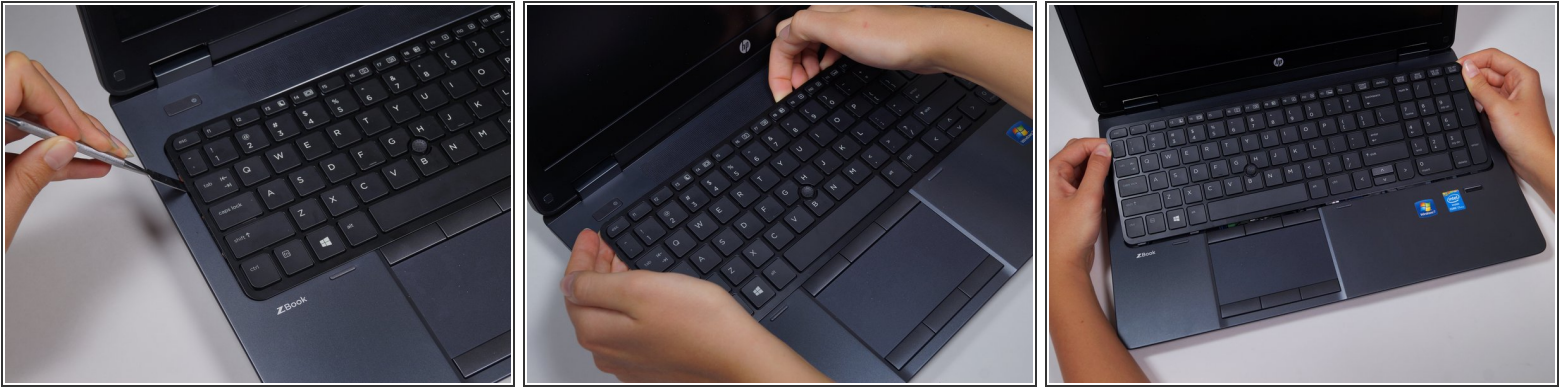
## Step 3 — Keyboard



- Remove the two 16mm screws with a Phillips #0 screwdriver.
- ⓘ There are two sets of threads to get past. Once unscrewed from the first thread, lift the screw up until it hits the next set and begin unscrewing again.

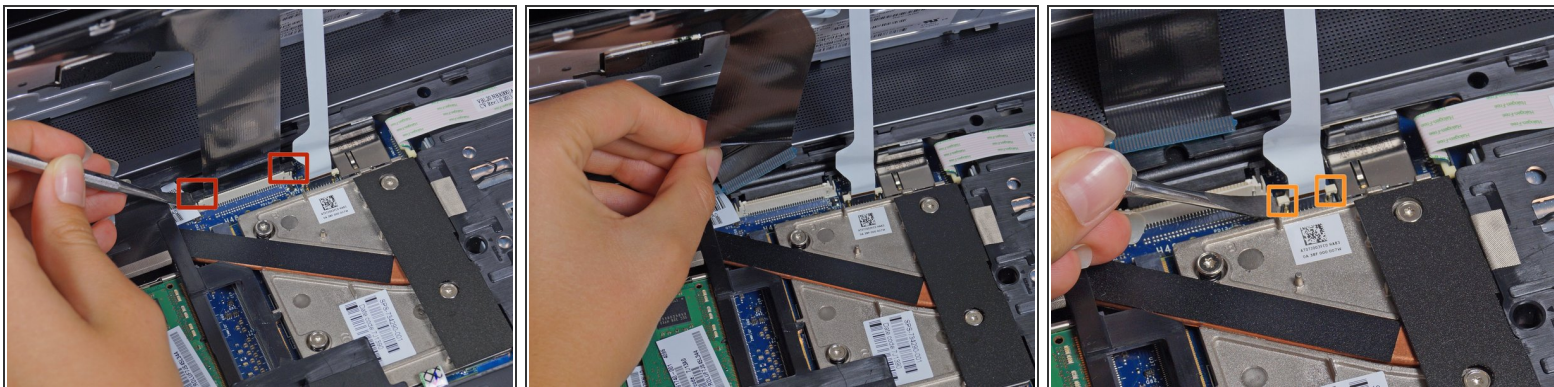


## Step 4



- ⚠ Do not try to pry the keyboard from the bottom. The keyboard is attached by clips on the left, top, and right side. Metal inserts on the bottom side lock the keyboard in place until they are slid up and out.
- ⚠ Be careful not to scratch or chip the computer when prying. If you have a plastic tool that is long enough to gain leverage, use that instead of a metal tool.
- ⚠ There are ribbons secured underneath so be careful not to pull the keyboard out too hard, breaking the connections to the ribbons.
- Flip the laptop over so the keyboard is visible.
- Insert the spudger under the left side of the keyboard.
  - Carefully raise the side of the keyboard and firmly pull the left corner of the keyboard until it pops up.
  - Run your fingers under the edges of the keyboard along the top edge of the keyboard, from the top left to the top right, to separate it from the remaining clips.
- Carefully slide the keyboard up toward the screen and out of the case.

## Step 5



- Gently lift the two tabs on either side of the black ribbon with a spudger until the ribbon comes loose.
- Disconnect the black ribbon by pulling the blue tab hanging off of it.
- Repeat with the white ribbon.

To reassemble your device, follow these instructions in reverse order.