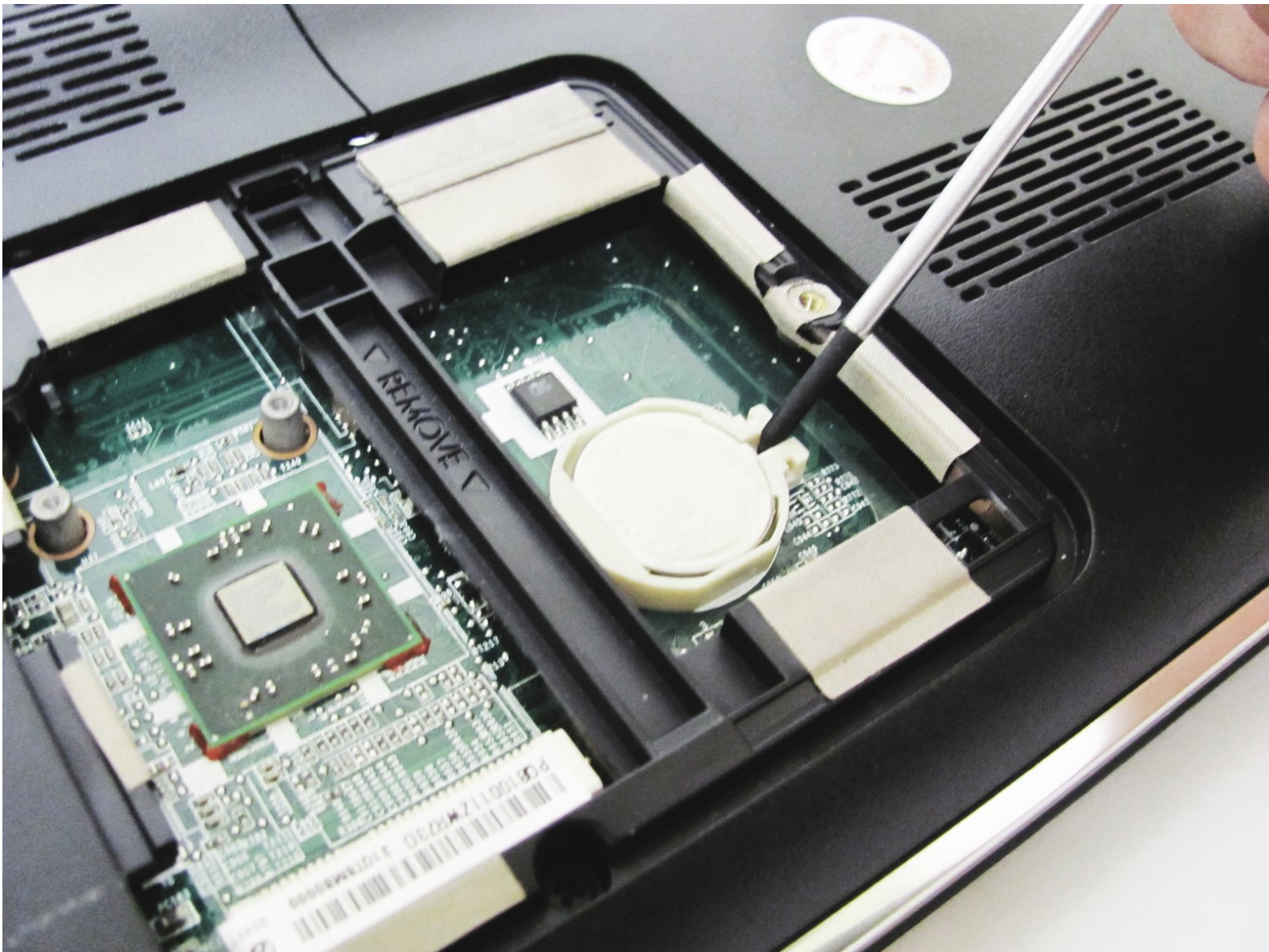




HP dv5-1125nr CMOS Battery Replacement

This guide shows you how to replace your CMOS battery on your HP dv5-1125nr.

Written By: Cory Mayer



INTRODUCTION

The CMOS battery maintains the computer's startup settings as well as its internal clock. If your computer notifies you about changing this battery, it is best to do so immediately. Use this guide if you need to replace the CMOS battery in your HP dv5-1125nr.



TOOLS:

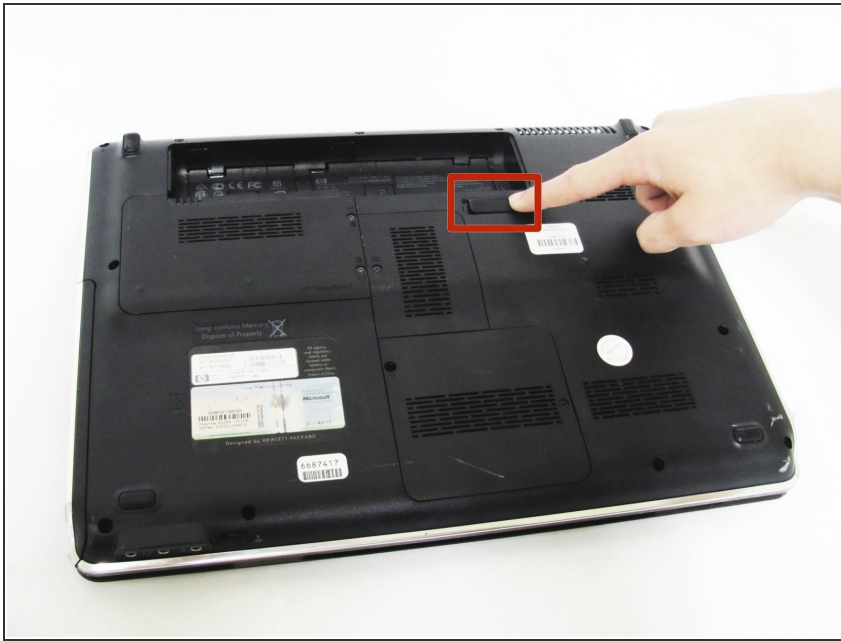
- [Phillips #00 Screwdriver](#) (1)
- [2.5 mm Flathead Screwdriver](#) (1)



PARTS:

- [CR2032 Lithium Battery](#) (1)

Step 1 — Battery



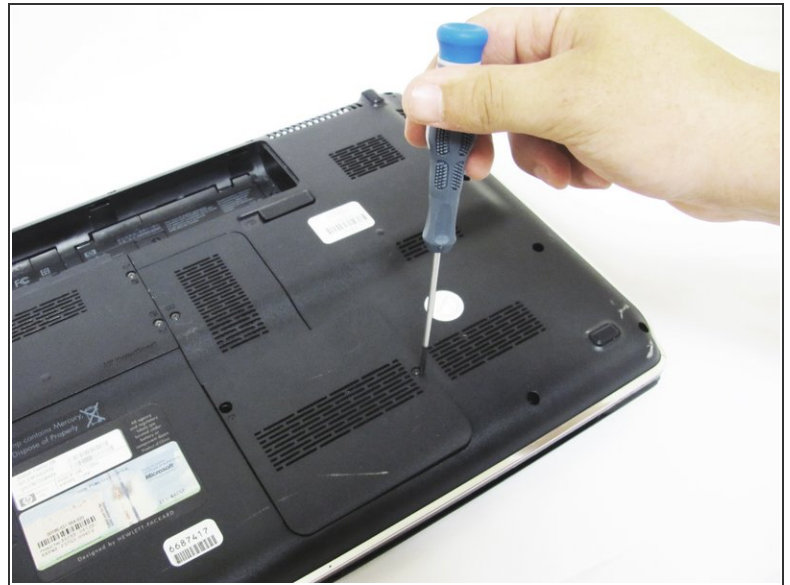
- ❗ Ensure your computer is shut down. Removing the battery while the laptop is still on may corrupt your files. Remove any power adapters and cords connected to the laptop body.
- Slide the switch to the left until the release clicks.

Step 2



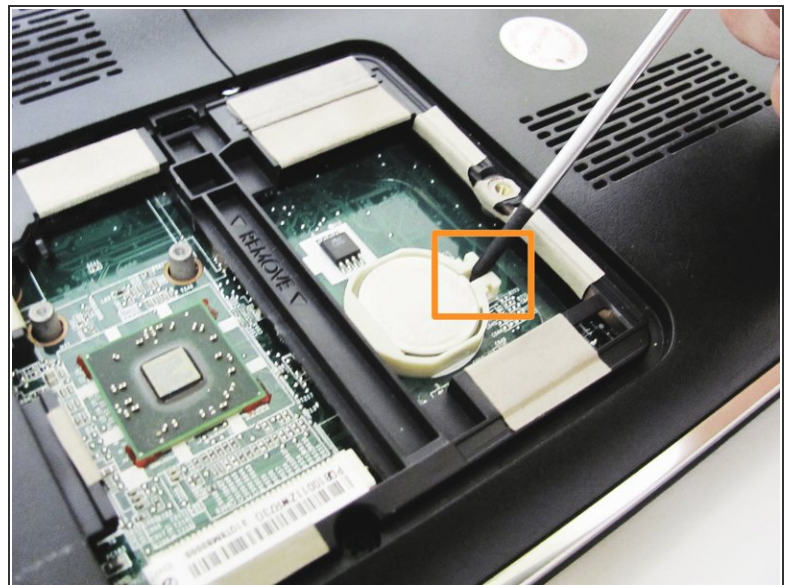
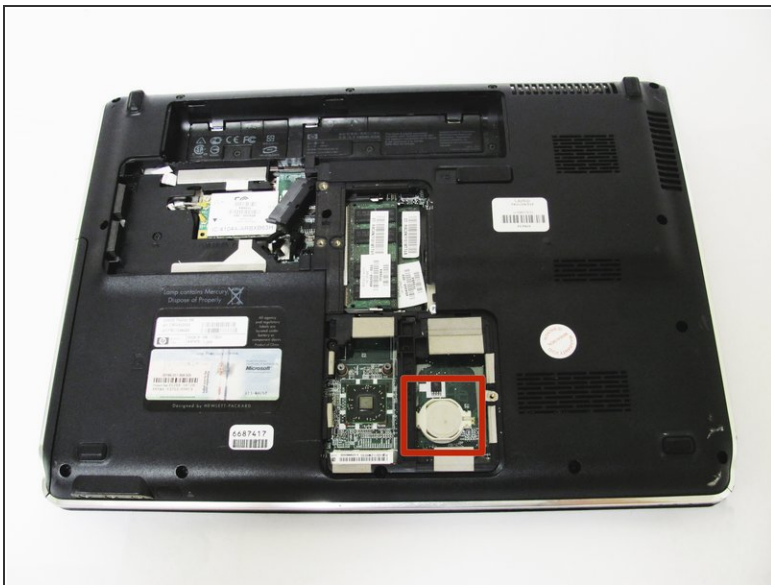
- Remove the battery.
- ❗ The release switch may need to be held down while removing the battery.

Step 3 — CMOS Battery



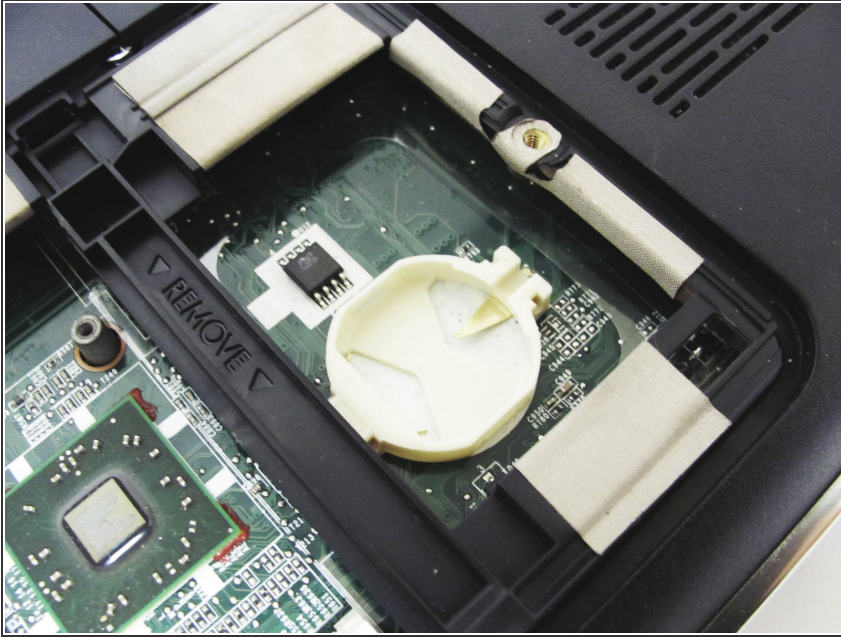
- Remove these two 4mm Phillips screws on the back panel using a Phillips #00 screwdriver and remove the cover to reveal the CMOS battery

Step 4



- Locate the CR2032 watch battery
- Using a 2.5mm flathead screwdriver, carefully pry up the battery using the tab to the right of the battery

Step 5



- The CMOS battery is now removed from your system.

To reassemble your device, follow these instructions in reverse order.