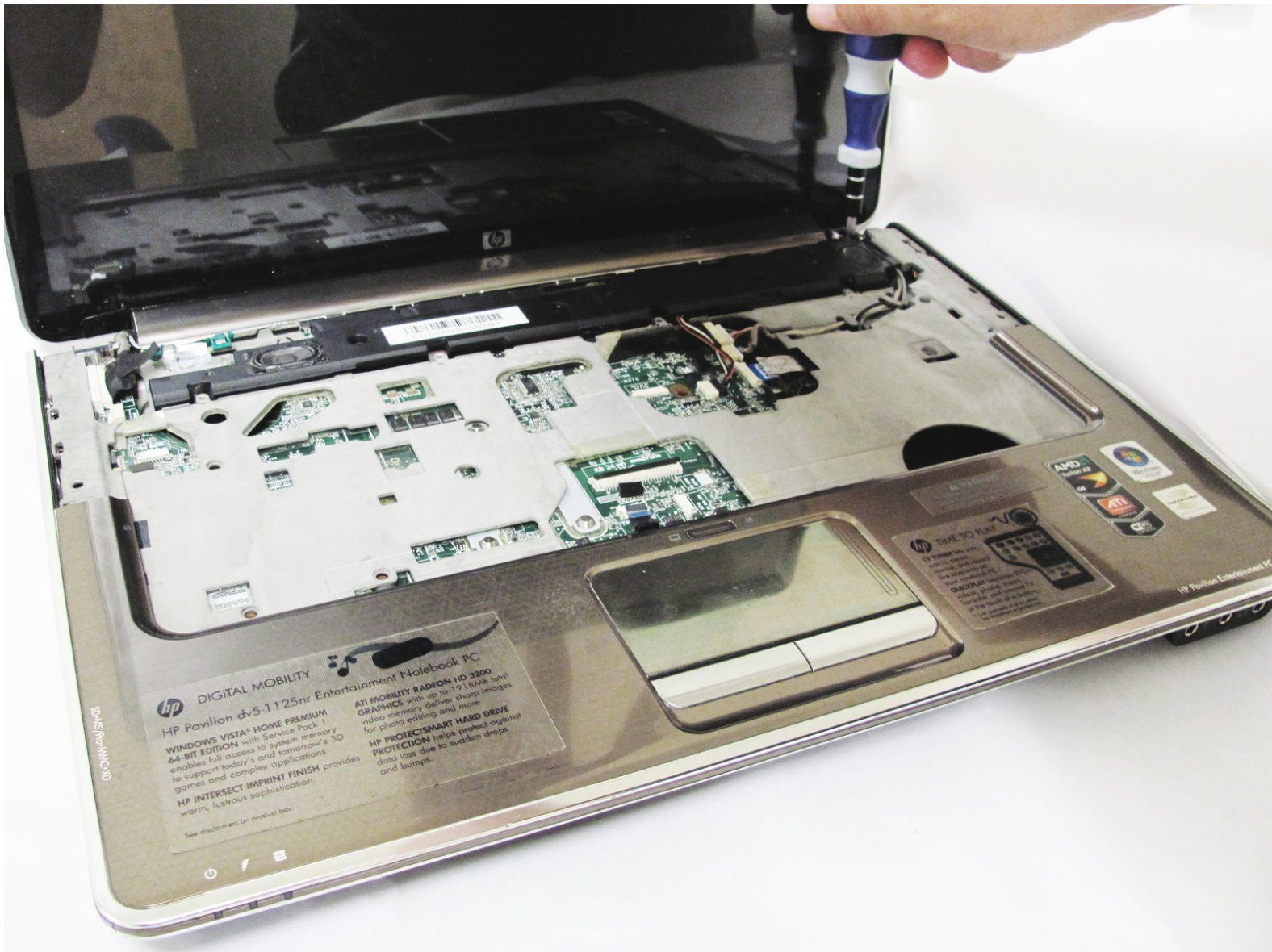




HP dv5-1125nr Display Replacement

This guide will walk you through how to replace the LCD display.

Written By: Nick Loey



INTRODUCTION

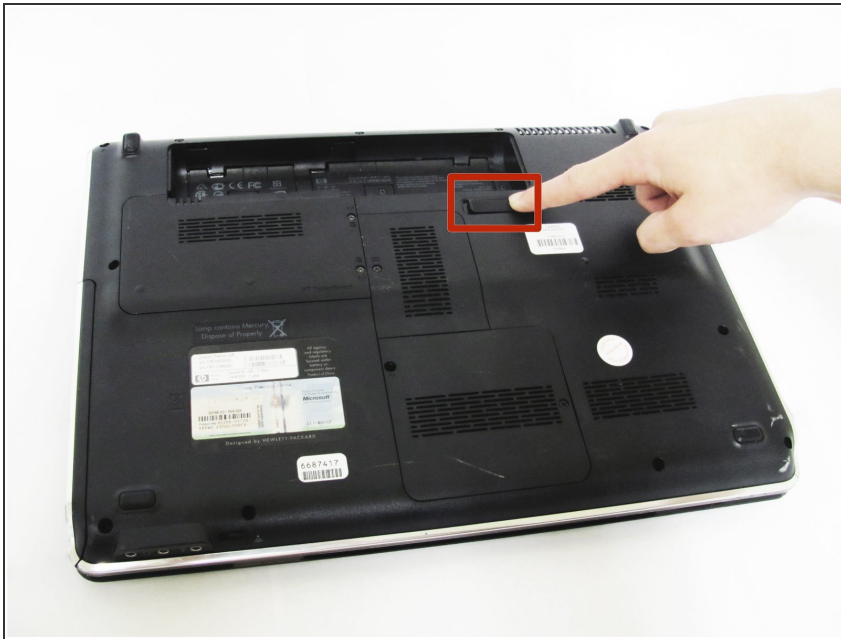
Replacing the LCD display is a more costly task, but it is certainly not too difficult.



TOOLS:

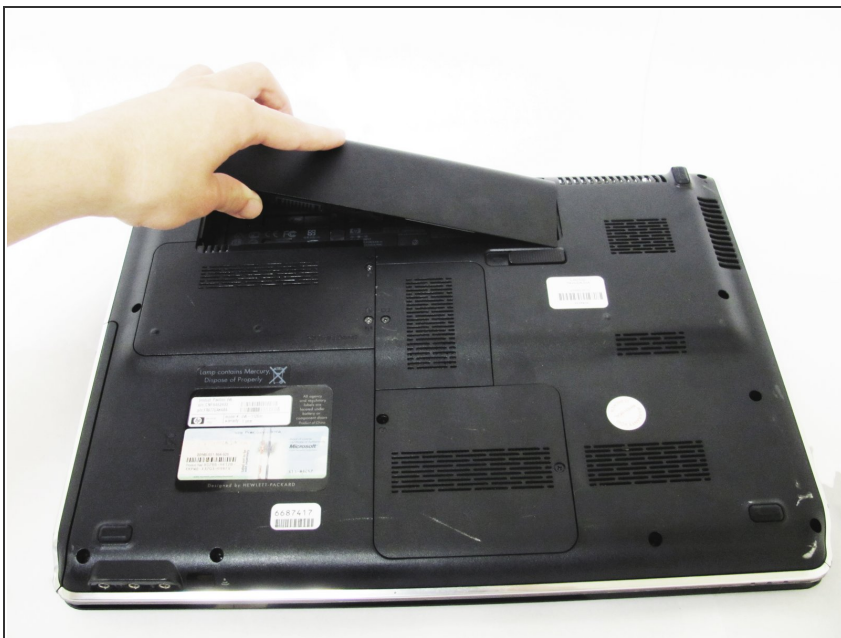
- [2.5 mm Flathead Screwdriver](#) (1)
 - [Phillips #00 Screwdriver](#) (1)
 - [iFixit Opening Tools](#) (1)
-

Step 1 — Battery



- i Ensure your computer is shut down. Removing the battery while the laptop is still on may corrupt your files. Remove any power adapters and cords connected to the laptop body.
- Slide the switch to the left until the release clicks.

Step 2



- Remove the battery.
- i The release switch may need to be held down while removing the battery.

Step 3 — Hard Drive



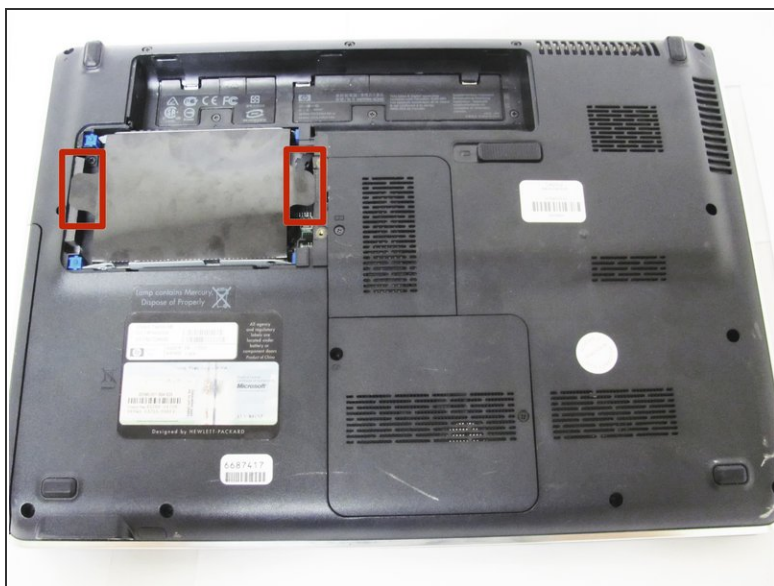
- Remove the two 5mm Phillips screws on the hard drive cover using a Phillips #00 screwdriver.

Step 4



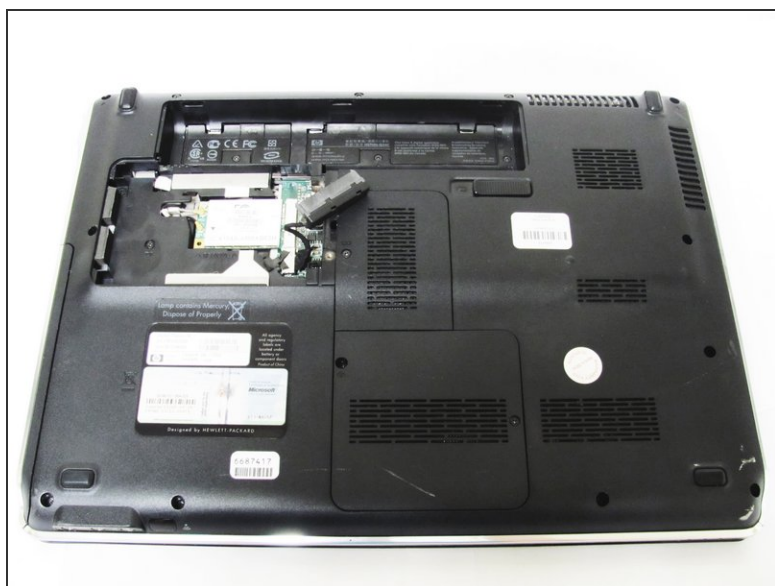
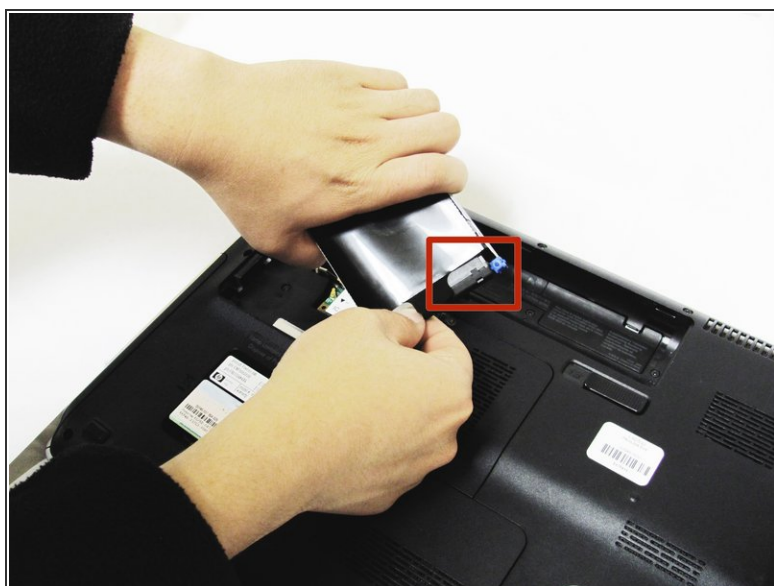
- Remove the plastic hard drive cover.

Step 5



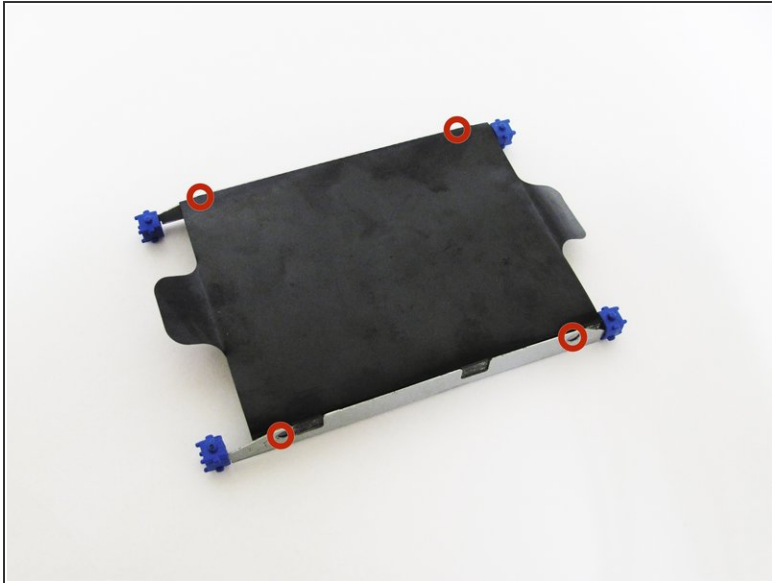
- Pull up on the two plastic flaps on the hard drive enclosure to remove it.

Step 6



- Gently lift the ribbon cable away from the hard drive enclosure to free the drive.

Step 7



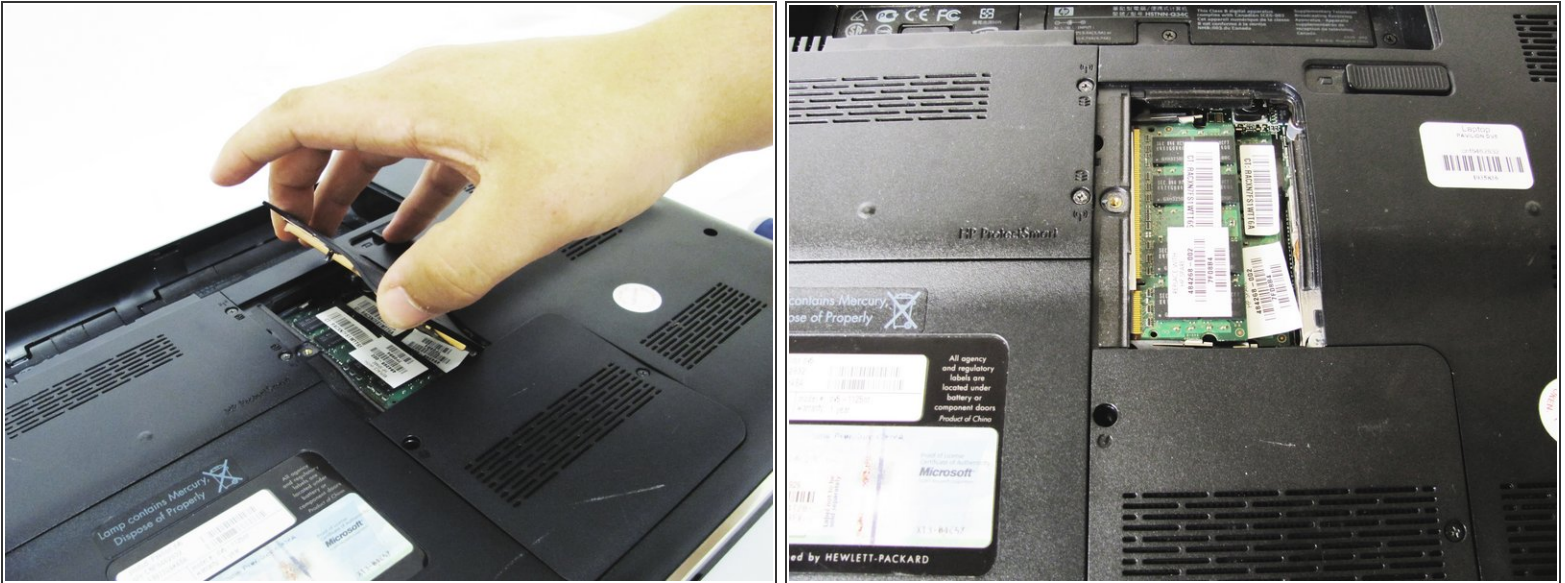
- Locate four 2mm Phillips screws on the side of the enclosure and remove them using a Phillips #00 screwdriver.
- Slide the hard drive out of the enclosure to complete the removal process.

Step 8 — RAM



- Remove the one 4mm Phillips screw from the RAM cover using a Phillips #00 screwdriver.

Step 9



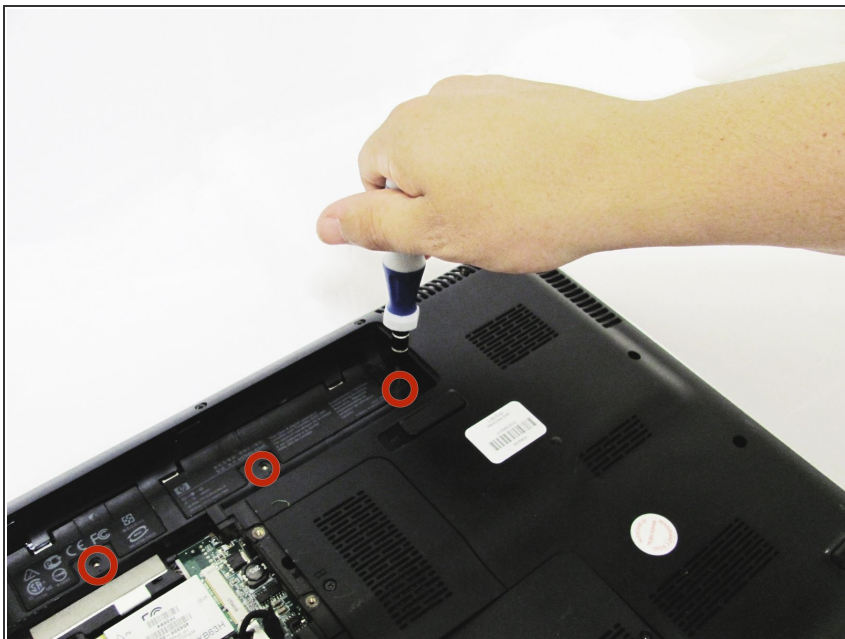
- Remove the RAM cover to reveal the module's underneath.

Step 10



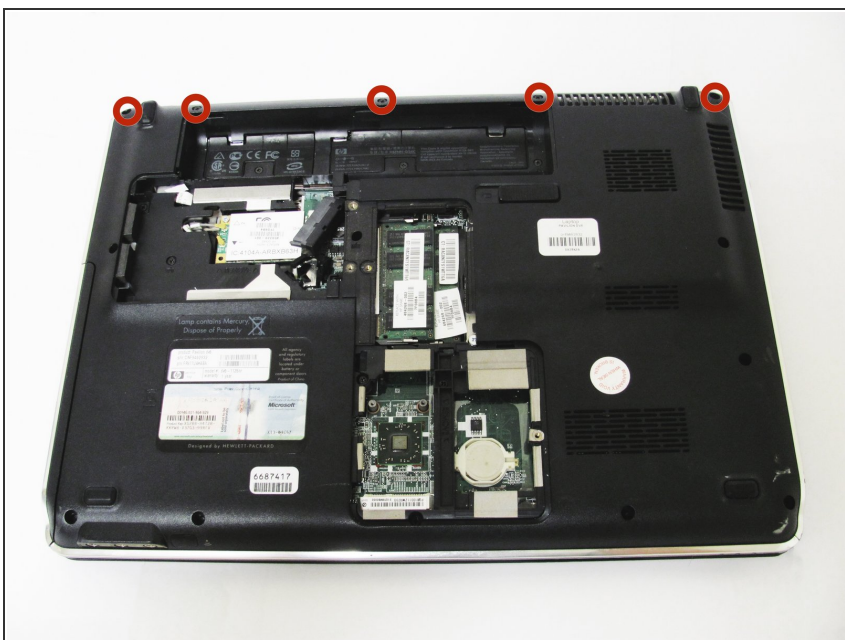
- ⚠ Make sure to ground yourself before touching the RAM modules; they are very sensitive to static electricity.
- Push the two metal tabs on the side of the RAM module outwards, towards the battery and CMOS compartments (up and down).
- Once the module is released, gently pull the module upwards.
- Repeat for the RAM module underneath the first one.

Step 11 — Keyboard



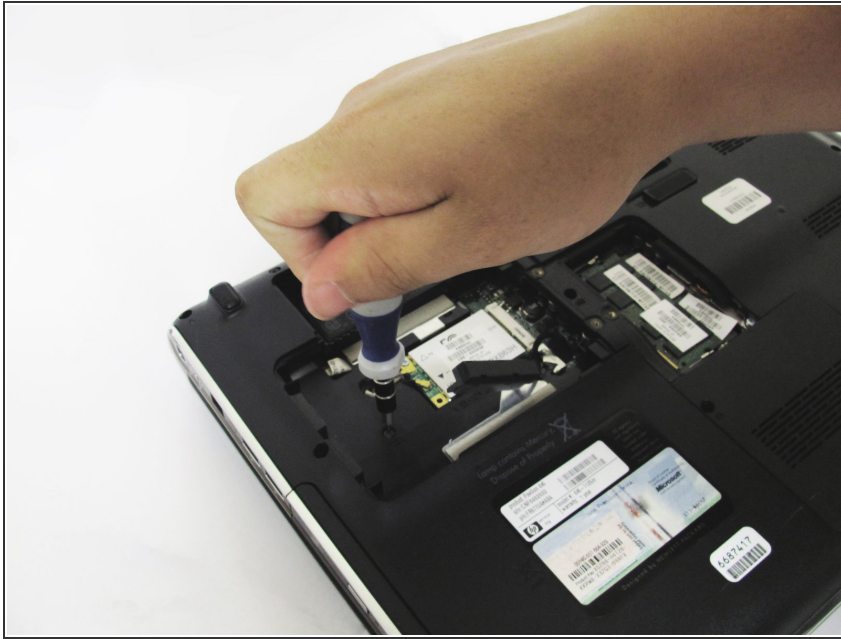
- Begin by unscrewing the three 3mm Phillips head screws inside the battery bay with the Phillips #00 screwdriver.

Step 12



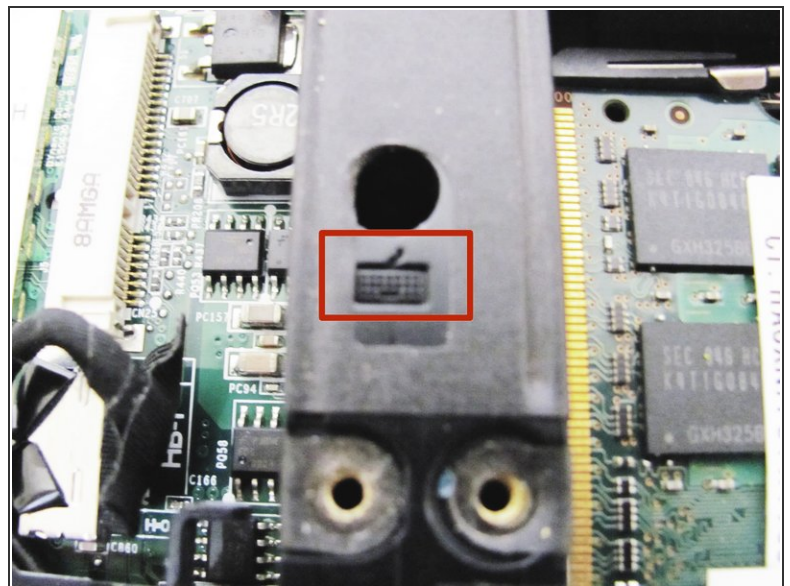
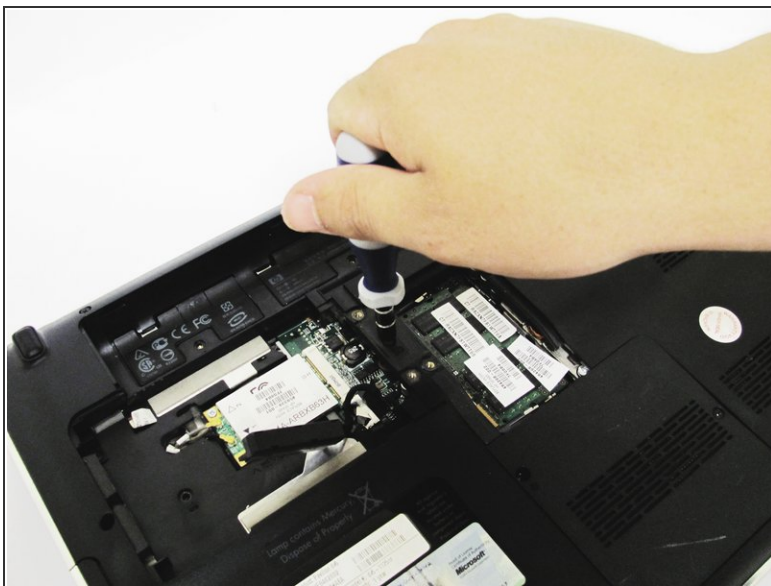
- Remove the five remaining 2mm screws using a Phillips #00 screwdriver.

Step 13



- Unscrew the 4mm Phillips screw inside the hard drive bay.
- ☑ Make sure to keep track of which screw goes where. The sizes are different for each set of screws!

Step 14



- Locate the hole in between the hard drive and RAM compartments.
- ❗ The hole is marked by a small keyboard symbol in the plastic (see the second picture).
- Unscrew the 4mm Phillips head screw from this hole.

Step 15



- Flip the laptop, and use the plastic opening tool on the side seam to remove the top cover.

i You may need to use the opening tool on both sides of the cover.

! Be careful not to break the ribbon cables under the cover.

Step 16




- Use a 2.5mm flathead screwdriver to remove the four 3mm screws on top of the keyboard.

Step 17




- Dislodge the keyboard to access the underside.

 Do not fully remove the keyboard. It is still attached by a ribbon cable, and forceful removal could break this necessary connection.

Step 18



- Locate the ribbon cable connection between the keyboard and motherboard.
- Pull upwards on the small black bar to release the ribbon cable and remove it.

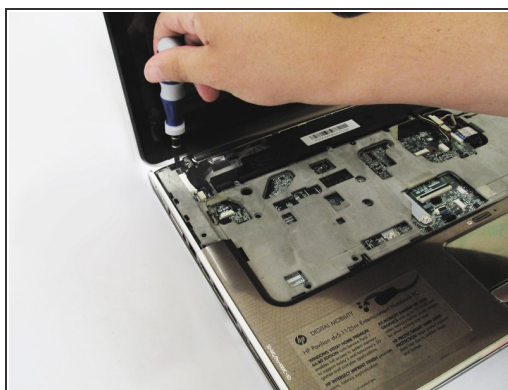
 Do not yank on the ribbon or try to pull it out. This may break the cable or motherboard.

Step 19



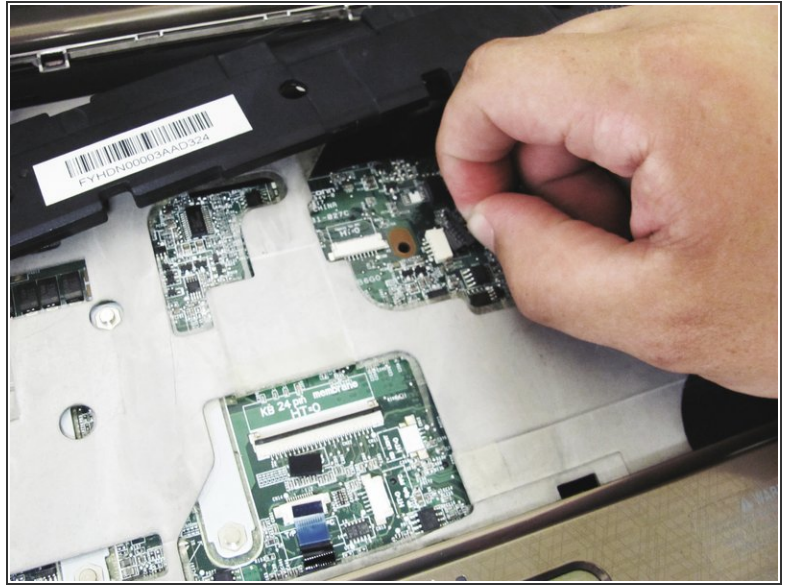
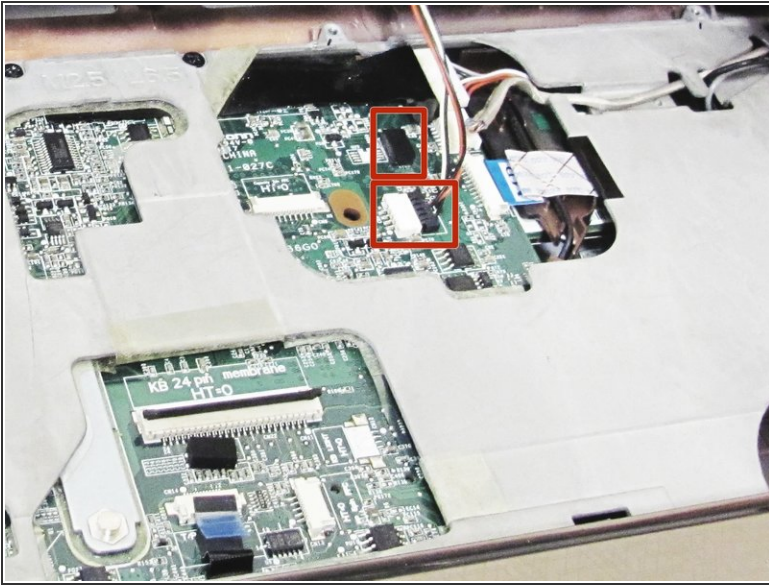
- The keyboard is now ready for replacement.

Step 20 — Display



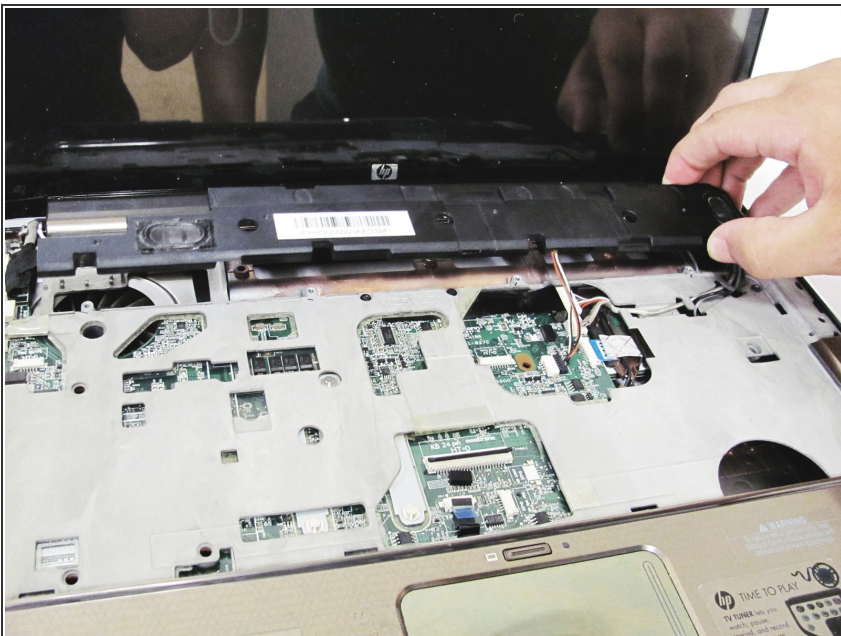
- Locate four 3mm screws in the upper corners of the keyboard tray and remove them using a #00 Phillips screwdriver.

Step 21



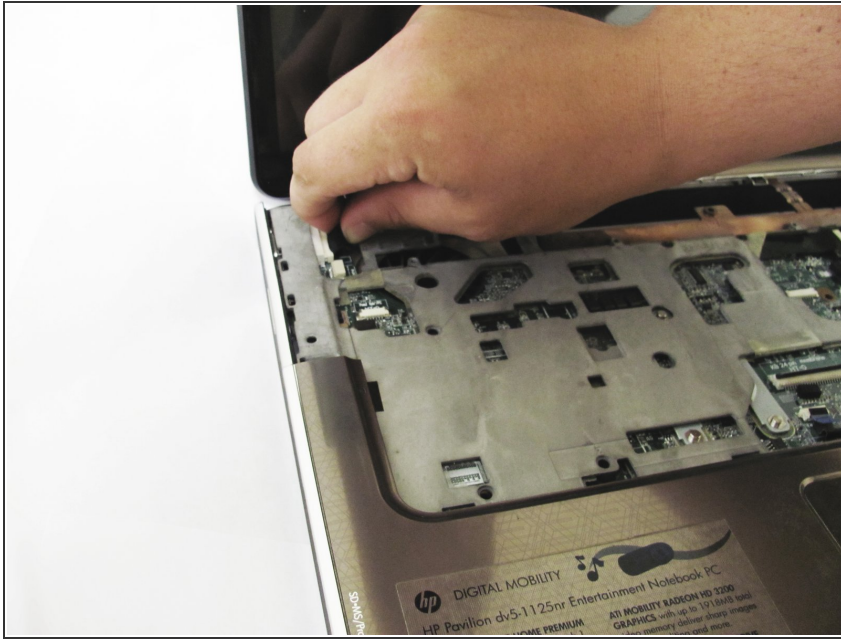
- Locate the two ribbon cable connectors that attach the speaker assembly to the motherboard.
- Using your fingers, carefully detach the ribbon cables from the motherboard by pulling them straight out on the connector.

Step 22



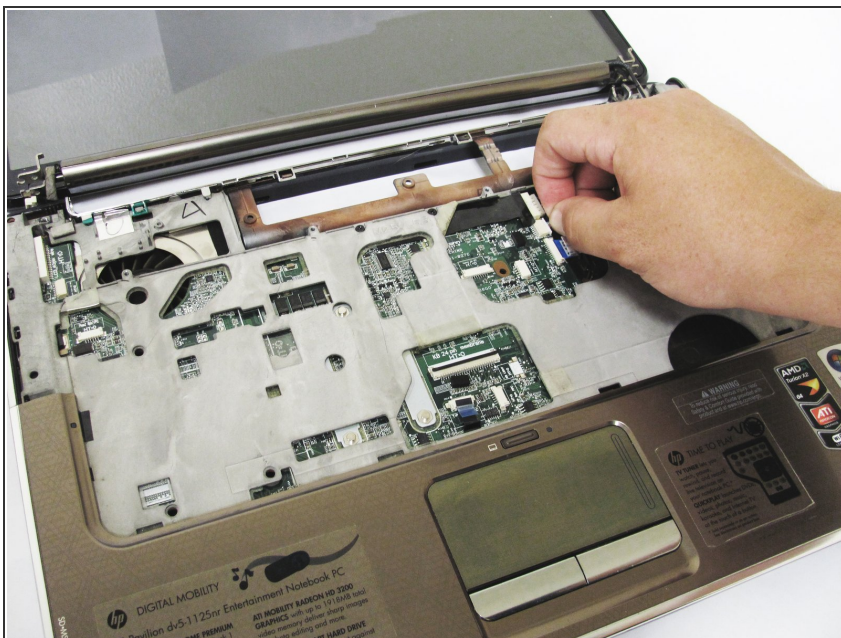
- Remove the speaker assembly from the keyboard tray.

Step 23



- Locate the large display ribbon connector near the upper left corner of the keyboard tray and remove the ribbon by pulling straight out on the connector.

Step 24



- ⚠ The display should now be loose, but make sure to remove all ribbon connectors before attempting to take off the display.
- Locate the two final ribbon connectors for the display on the motherboard and remove them similarly by pulling straight outward on the connectors.
- You are now free to remove the display from the computer.

To reassemble your device, follow these instructions in reverse order.