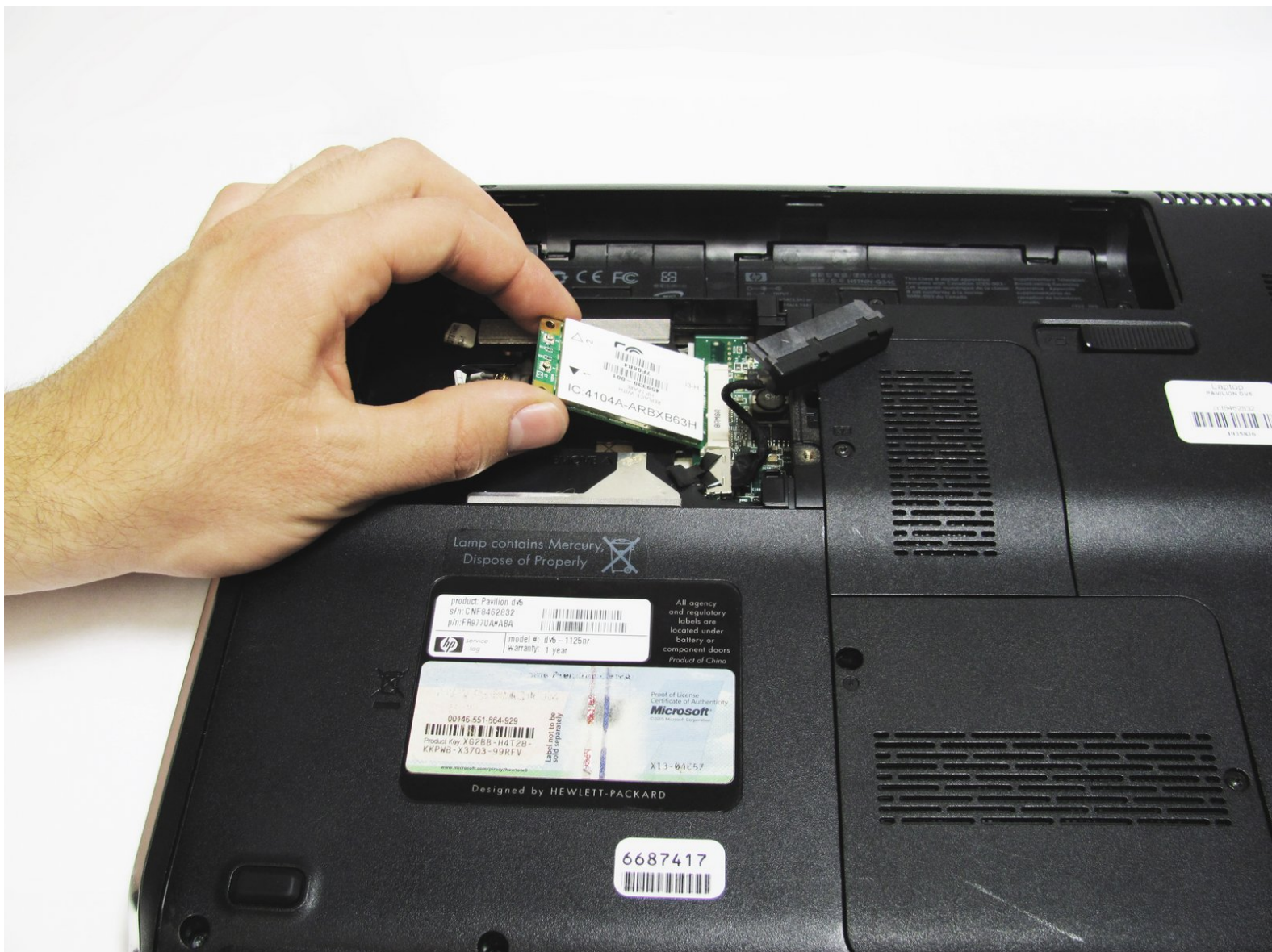




HP dv5-1125nr WLAN Card Replacement

This page will guide you through the steps needed to replace your wireless card.

Written By: Cory Mayer



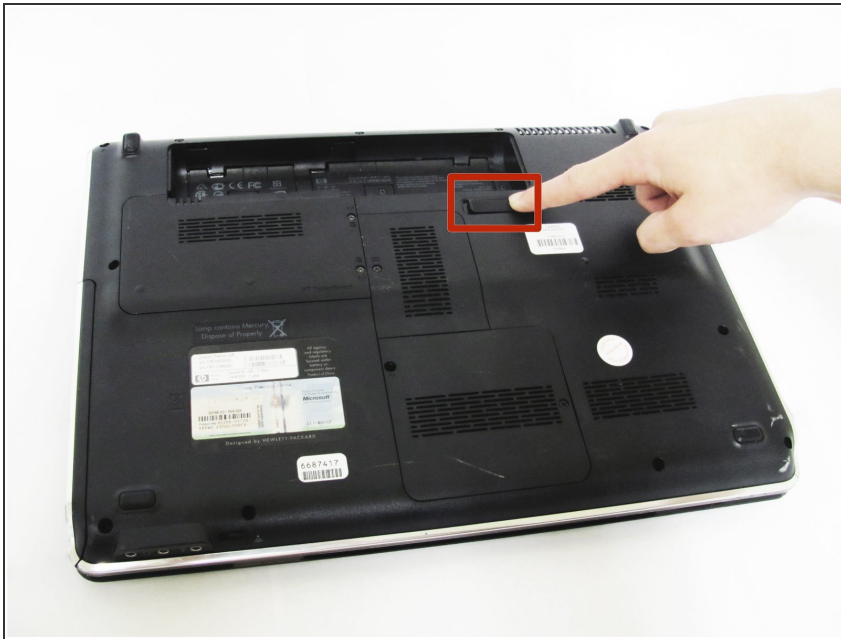
INTRODUCTION

If your wifi isn't working, it might just be a loose connection to your wireless card. Follow this guide to replace your wireless card.

TOOLS:

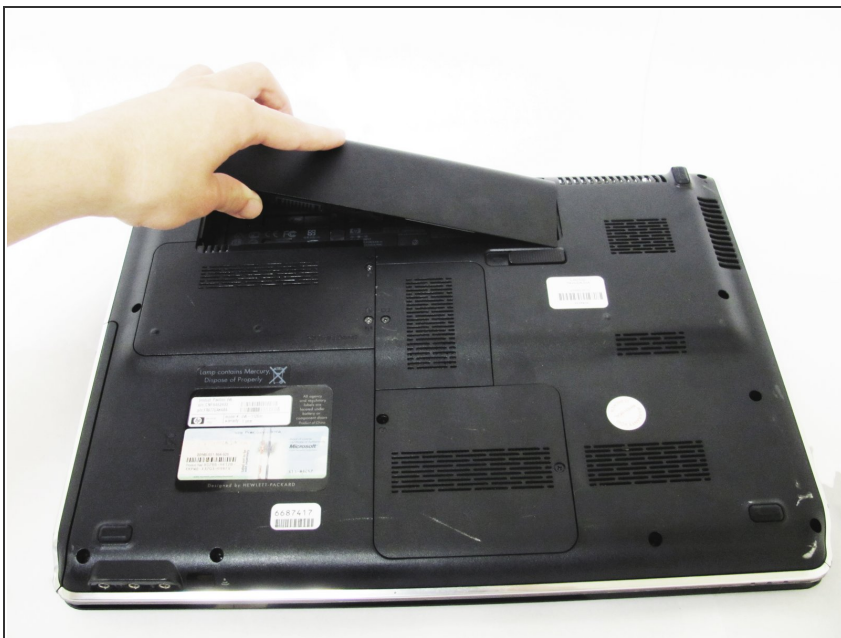
- [Spudger](#) (1)
 - [Phillips #00 Screwdriver](#) (1)
 - [Phillips #000 Screwdriver](#) (1)
-

Step 1 — Battery



- ❗ Ensure your computer is shut down. Removing the battery while the laptop is still on may corrupt your files. Remove any power adapters and cords connected to the laptop body.
- Slide the switch to the left until the release clicks.

Step 2



- Remove the battery.
- ❗ The release switch may need to be held down while removing the battery.

Step 3 — Hard Drive



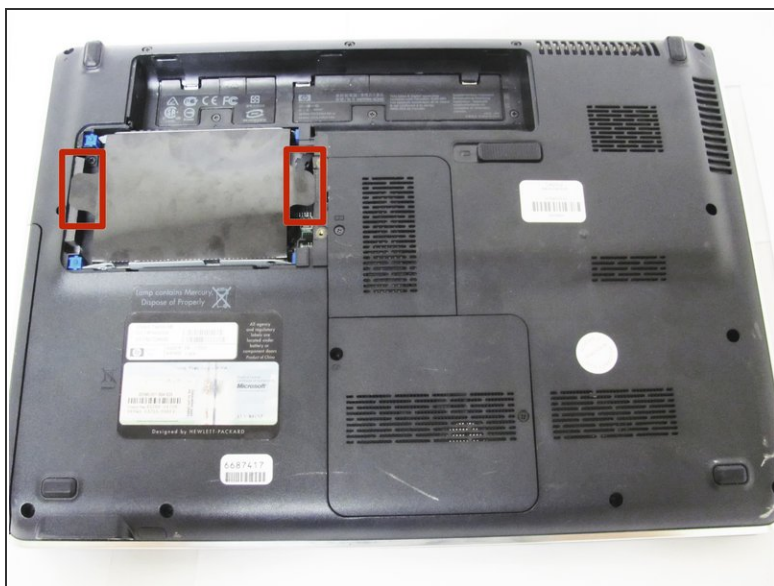
- Remove the two 5mm Phillips screws on the hard drive cover using a Phillips #00 screwdriver.

Step 4



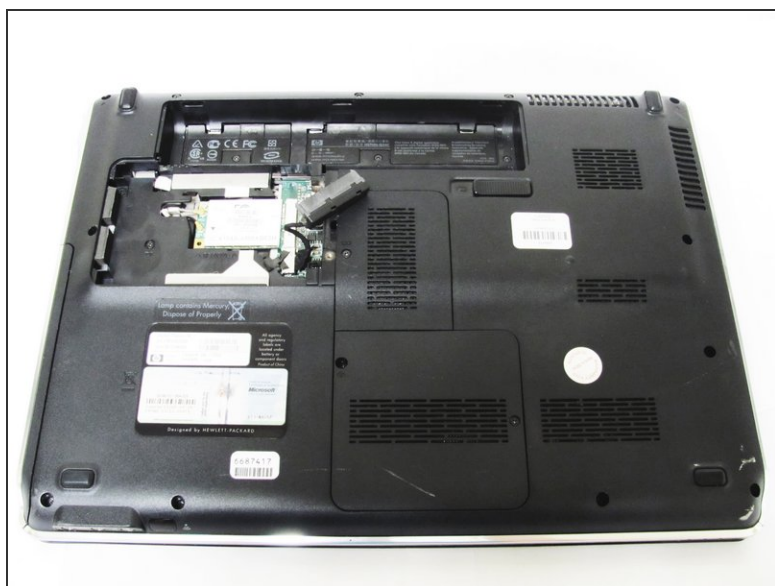
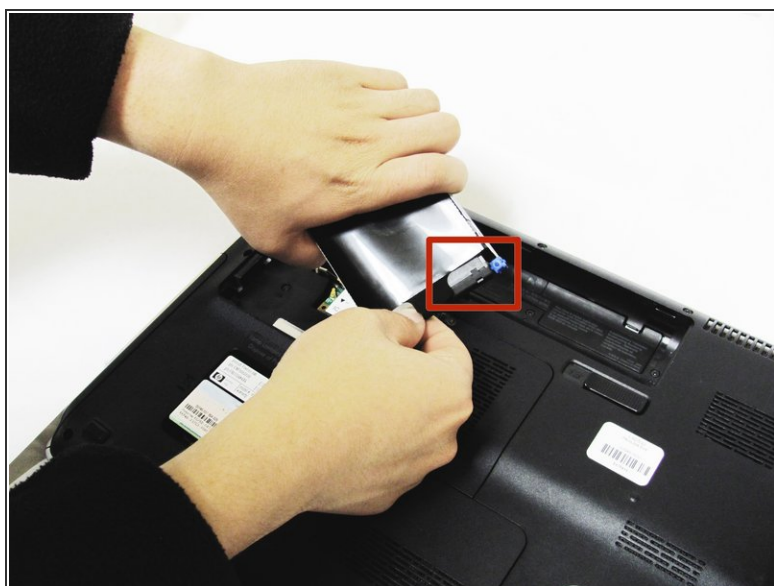
- Remove the plastic hard drive cover.

Step 5



- Pull up on the two plastic flaps on the hard drive enclosure to remove it.

Step 6



- Gently lift the ribbon cable away from the hard drive enclosure to free the drive.

Step 7



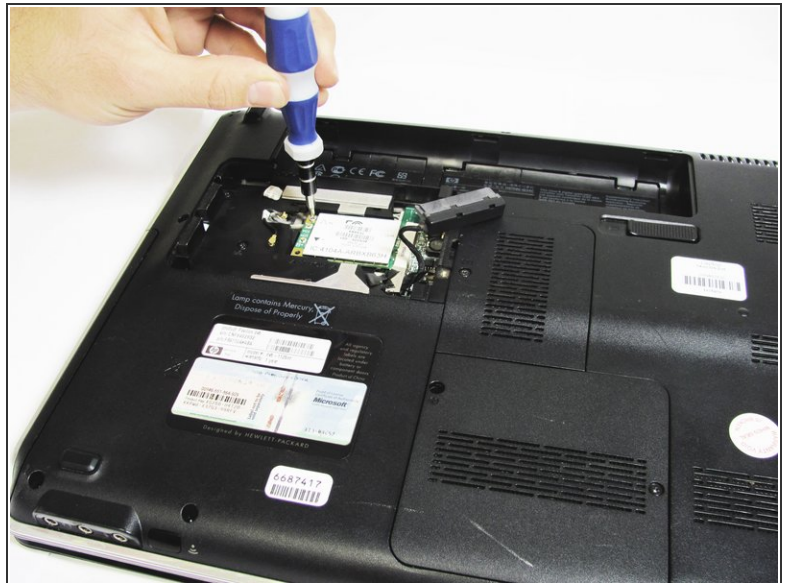
- Locate four 2mm Phillips screws on the side of the enclosure and remove them using a Phillips #00 screwdriver.
- Slide the hard drive out of the enclosure to complete the removal process.

Step 8 — WLAN Card



- Locate the wireless card and the two wires attached to it.
- ⚠ Caution: Prying on the WLAN card wires in the wrong direction could damage your wireless card. Make sure to lift straight up when removing the wires.
- Using a plastic spudger tool, carefully lift up on each wire connecting the card to unsnap the connectors.

Step 9



- Locate the 2.5mm Phillips screw on the corner of the WLAN card and remove it using a Phillips #000 screwdriver.

Step 10



- Upon removing the screw, the WLAN card will pop up. Keeping a natural angle, slide the card out of the slot.
- The card is now free from your computer.

To reassemble your device, follow these instructions in reverse order.