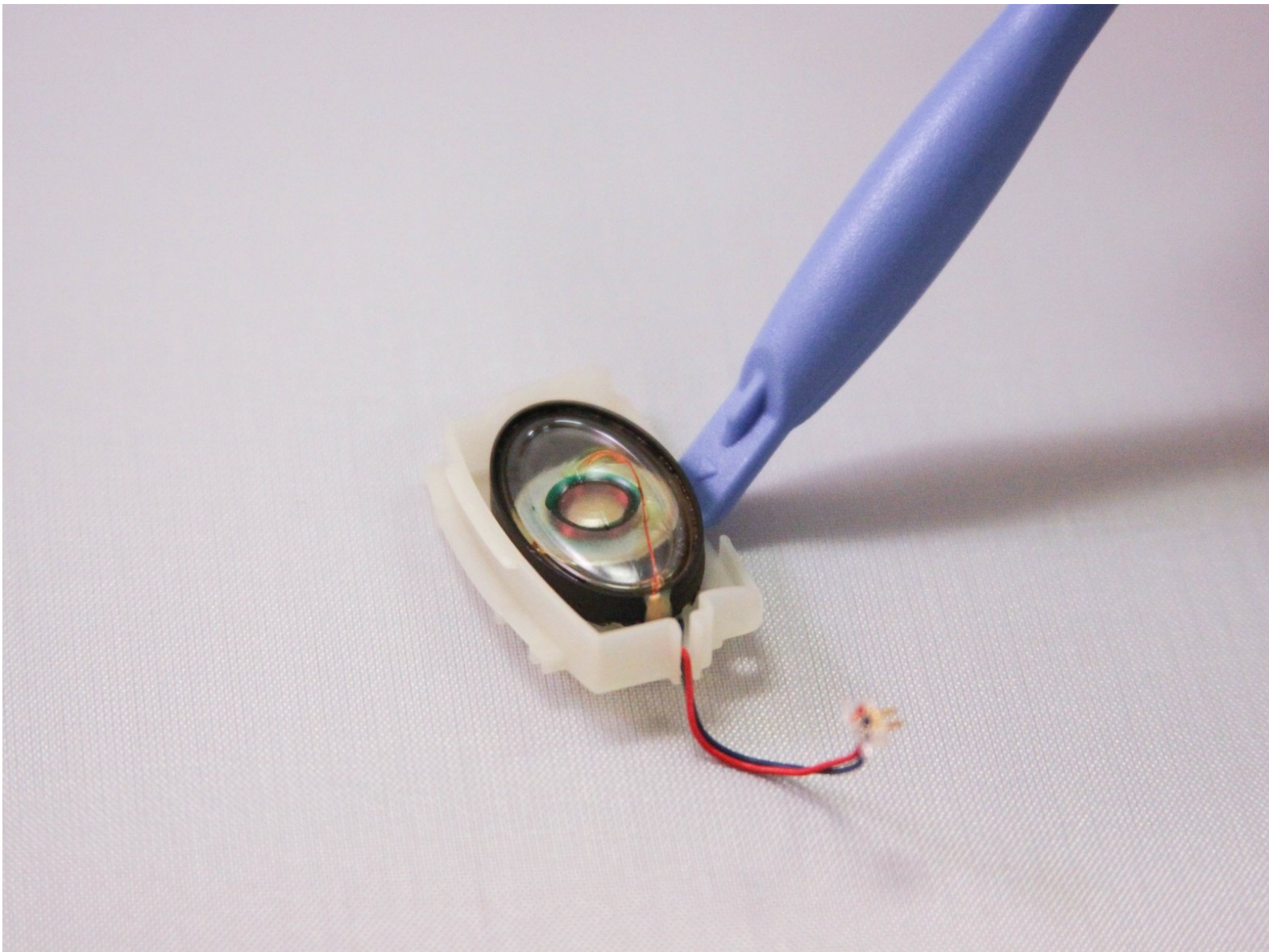




# HP iPAQ H3850 Speaker

Here is a guide to replace the speaker on the HP iPaq whether it is sounding scratchy or completely blown out and doesn't emit any noise.

Written By: Kevin Oriz





## TOOLS:

- [Essential Electronics Toolkit \(1\)](#)
-

## Step 1 — Speaker



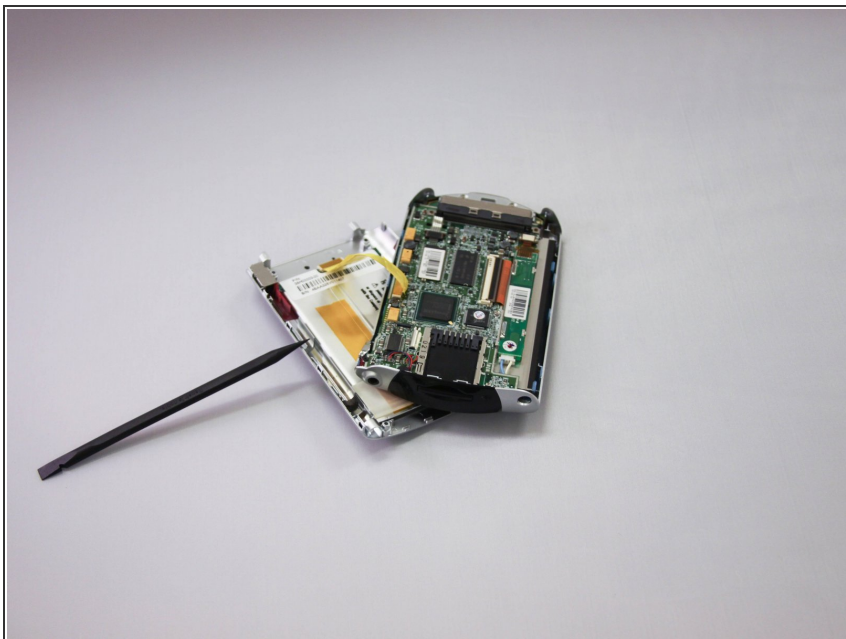
- To begin the disassembly of the device, place it on a flat surface with the screen facing down.

## Step 2



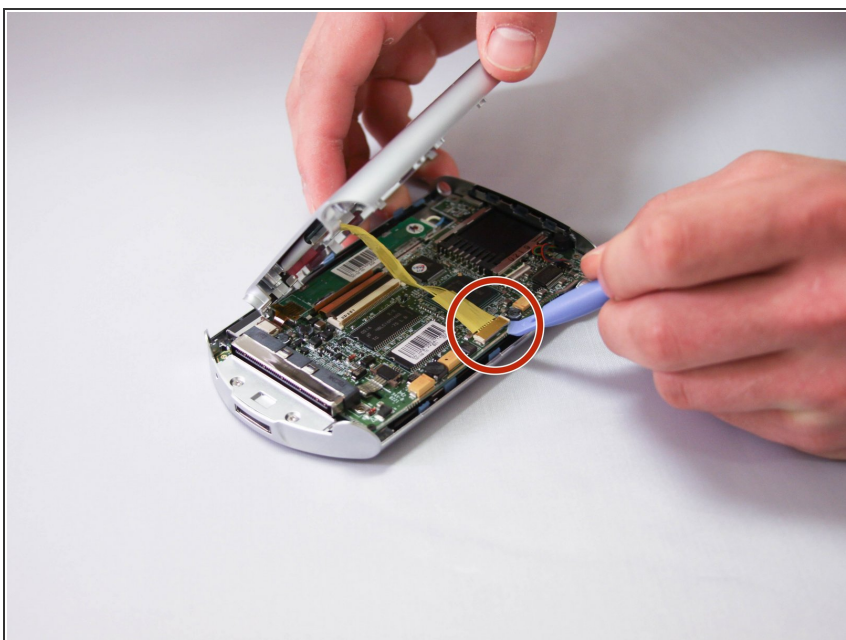
- Remove the four screws found on the back cover of the device.

## Step 3



- Carefully remove the back cover using a plastic opening tool against the grooves along the sides of the iPAQ.

## Step 4



- Using the plastic opening tool, carefully detach the yellow ribbon from the connector pins to separate the device into two halves. (This step isn't necessary for speaker removal it will just make the process a lot easier.)

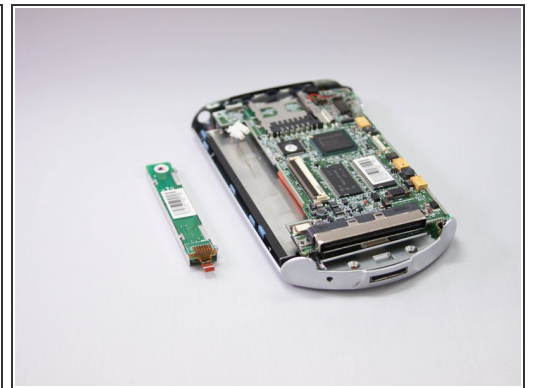
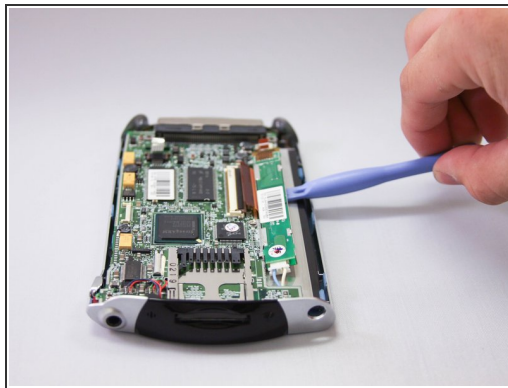


## Step 5



- Remove ribbon cable connected to display logic board by pulling plastic clips on both sides towards top of device
- Use plastic opening tool to carefully pull brown ribbon cable from connector

## Step 6



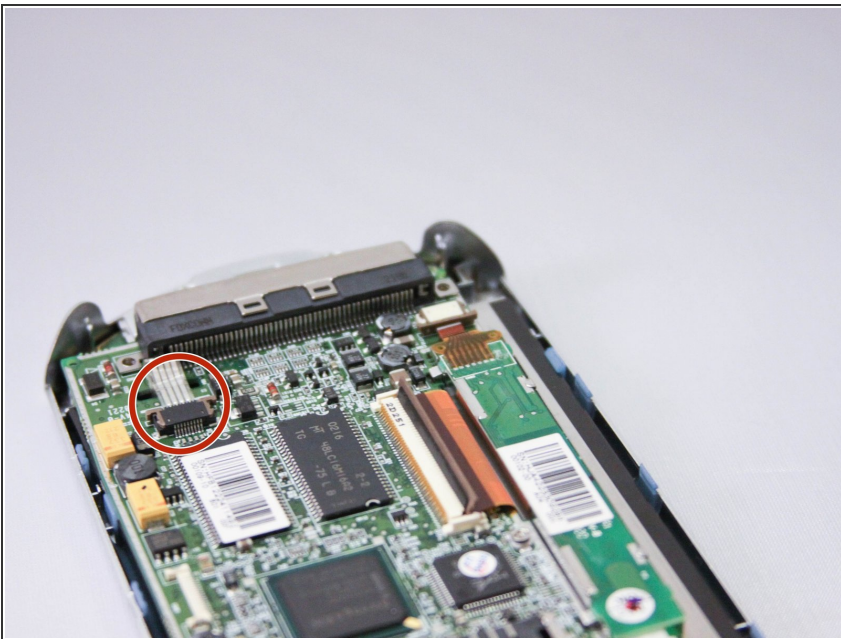
- Use plastic opening tool to carefully remove display logic board from housing.
- Unplug connector from the opposite end of the display logic board.
- Completely remove component.

## Step 7



- Flip up black plastic clip on large ribbon cable connector located towards center of mother board
- Use plastic opening tool to carefully remove ribbon cable from connector

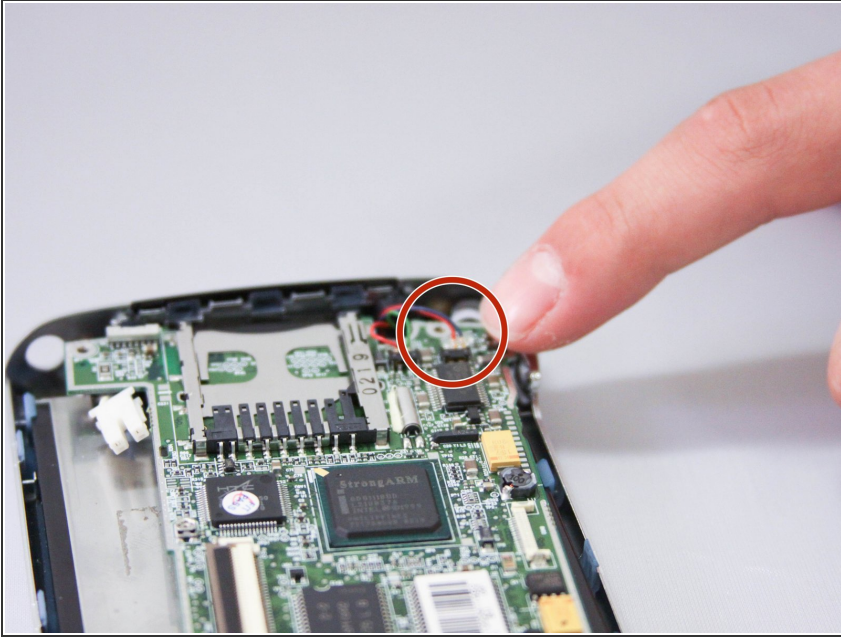
## Step 8



- Gently pry clear/grey ribbon cable in the bottom corner of the device out of connector with plastic opening tool
- Use hands or tweezers to remove if necessary



## Step 9



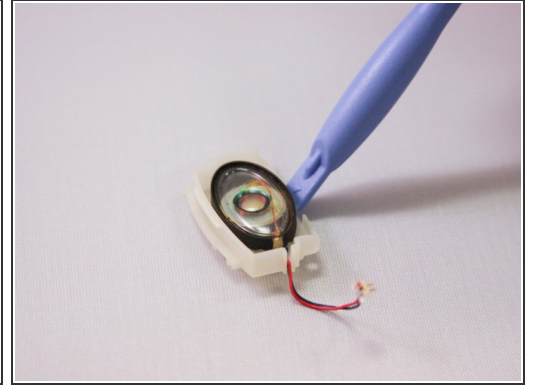
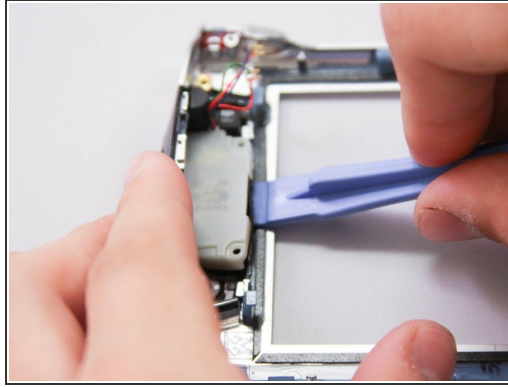
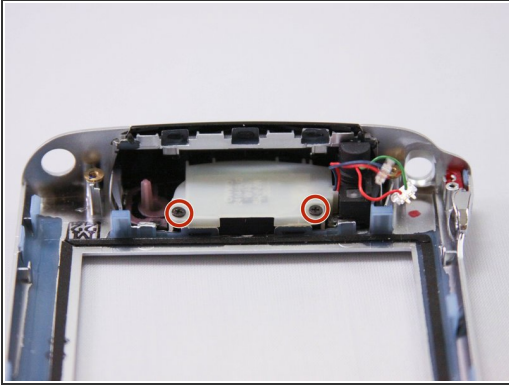
- Use hands to gently unplug speaker and microphone connectors from mother board

## Step 10



- Remove four small screws from each corner of the motherboard using phillips head screwdriver.
- Use your hands/plastic opening tool to carefully lift the mother board out of housing.
- Place the motherboard to the side.

## Step 11



- At the top of the device remove the screws holding down the speaker and housing.
- When the screws are out pry out speaker along with the housing.
- Lay down the speaker and housing with the housing on the bottom side and pry out the speaker with the plastic opening tool.

## Step 12



- Insert replacement speakers as needed.
- Follow steps in reverse order to reassemble the device.

To reassemble your device, follow these instructions in reverse order.