



# HP iPAQ HW6515 Motherboard Replacement

This guide will instruct you on how to install a motherboard into the iPAQ.

Written By: Ashley Schaefer





## TOOLS:

- [T6 Torx Screwdriver](#) (1)
  - [Phillips #00 Screwdriver](#) (1)
-

## Step 1 — Battery



- Flip the HP iPAQ HW6515 over with the screen facing down.
- Take the back cover off by pressing on the small silver button while pulling back then up on the case.
- Place the back of the case aside for now.

## Step 2



- Remove the battery by pulling up on the black tab.



## Step 3 — Motherboard



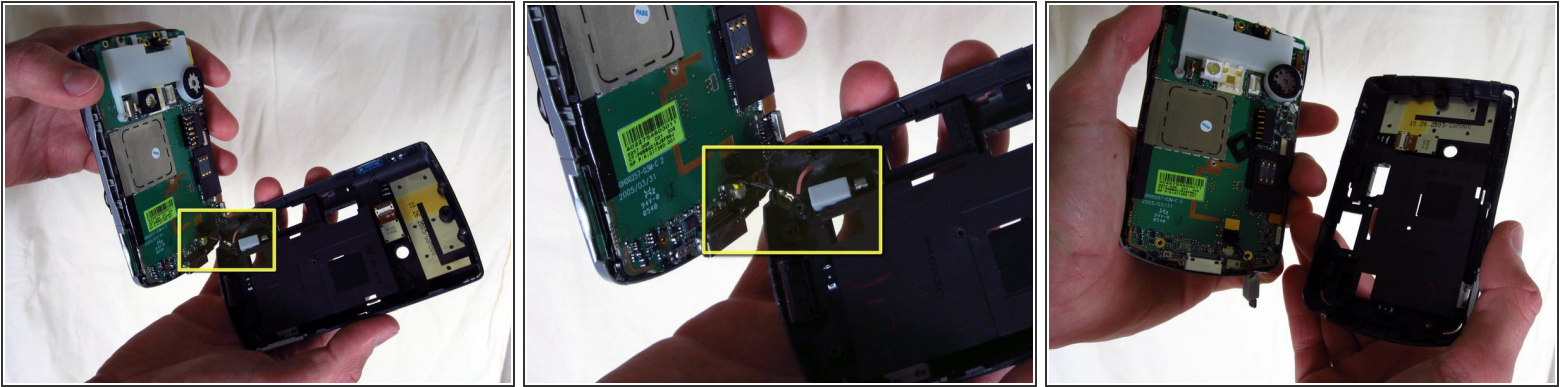
- Unscrew the four outside screws using the T6 hexagonal star screwdriver.
- Unscrew the inside middle screw using a Phillips 00 screwdriver.
- ⓘ "Warranty VOID if broken" sticker might be covering the middle screw, if this is the case, peel it off to reveal the screw.

## Step 4



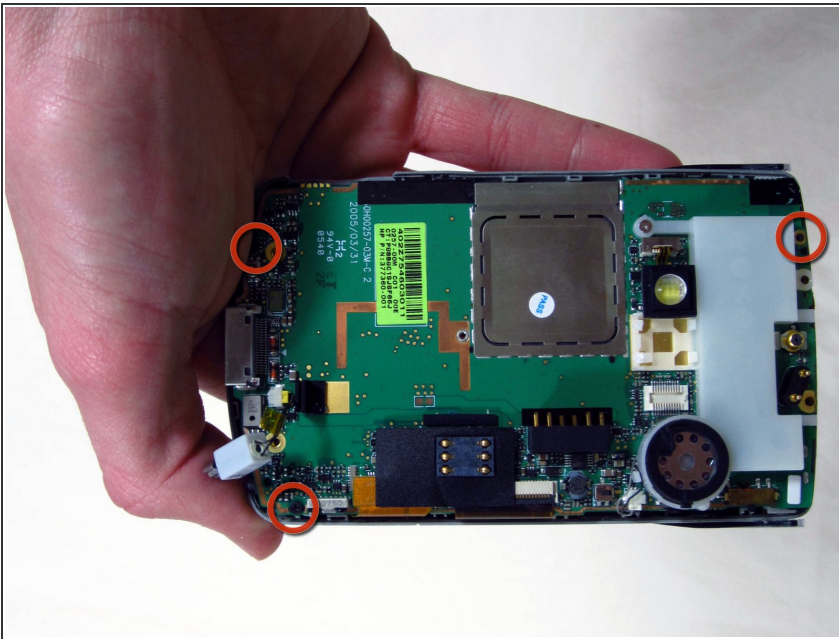
- Use the plastic opening tool to pry apart the covers along the bottom of the phone.
- Slide the plastic opening tool along the seam until the two halves of the case separate.

## Step 5



- Unplug the sensor wire that connects the two halves of the case before pulling the two halves apart. Not doing so will damage the sensor wire.

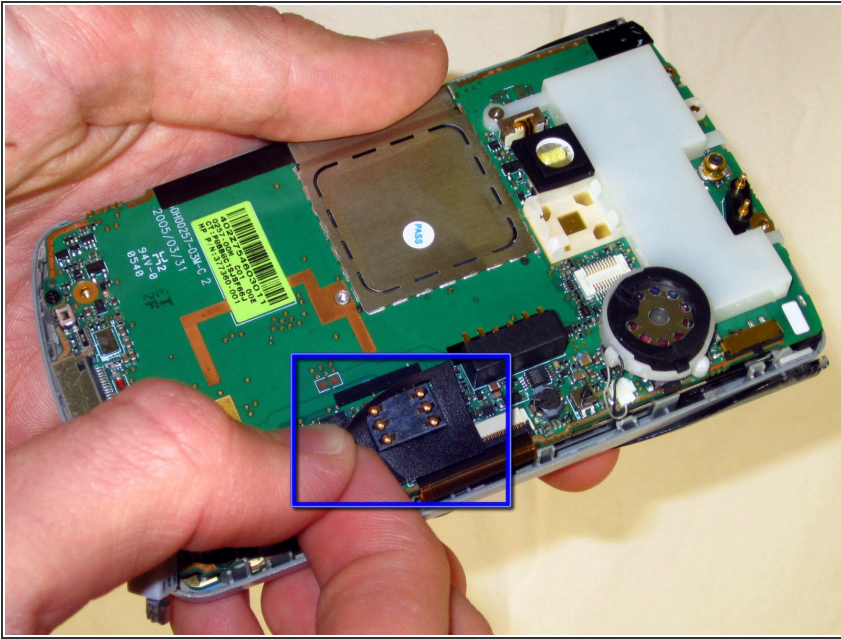
## Step 6



- Use a 00 Phillips screwdriver to remove the three small screws holding down the motherboard.

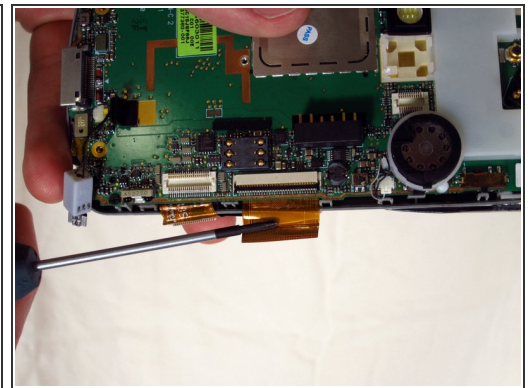
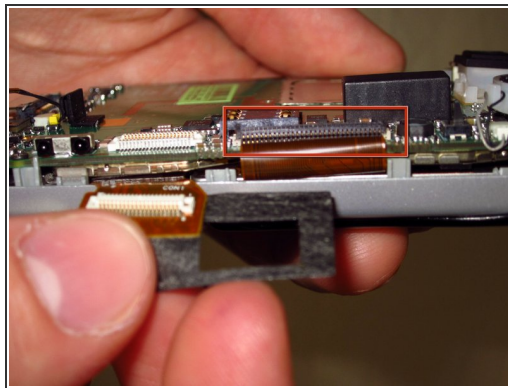
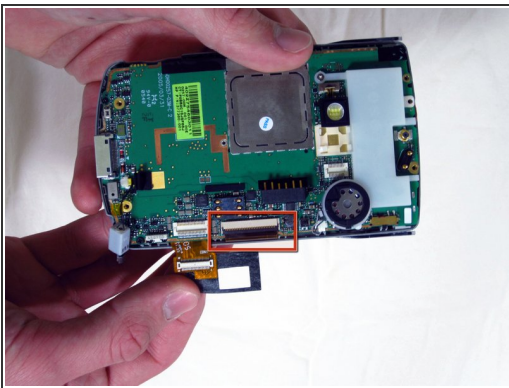


## Step 7



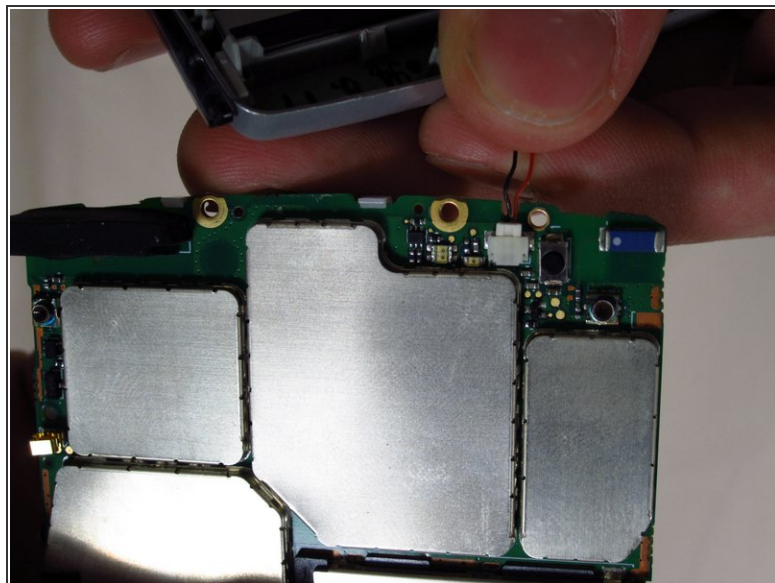
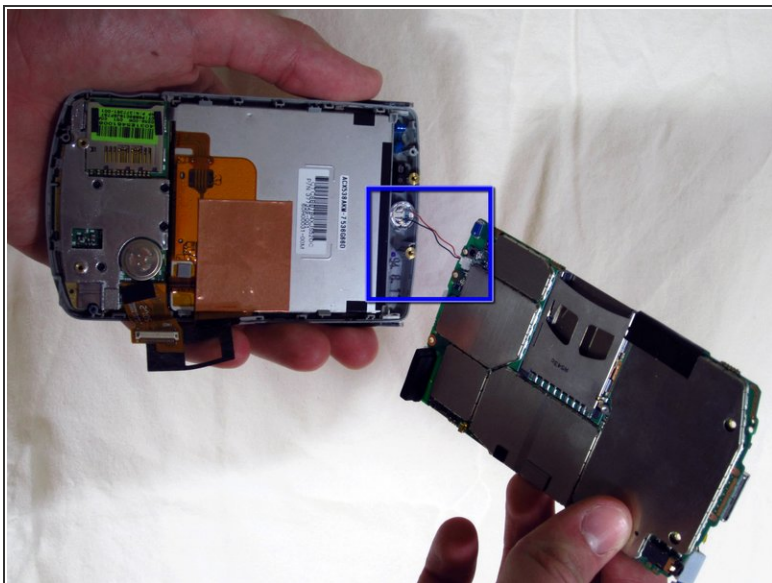
- Peel back the black tape that covers the connector.
- ⓘ It is fine if one of the left connectors comes off along with the tape.

## Step 8



- Lift the black tab to a 45 degree angle.
- Use a screwdriver to get under the tape and disconnect the tape from the black tab.

## Step 9



- Gently pry the motherboard out of the front casing, bottom first.
- ⚠ Disconnect the wire connecting the motherboard to the front casing. Using too much force will damage this wire.

To reassemble your device, follow these instructions in reverse order.