



HP iPAQ h4155 Backup Battery Replacement

This guide will show you how to change your backup battery for replacement.

Written By: John Pagliero





TOOLS:

- [Tweezers](#) (1)
-

Step 1 — Battery



- Slide the silver release tab up and simultaneously lift the cover up from the left side.

Step 2



- Push the tab from left to right to remove the cover.

Step 3



- Now lift the battery up and away from the device to remove it.

Step 4 — Back Case



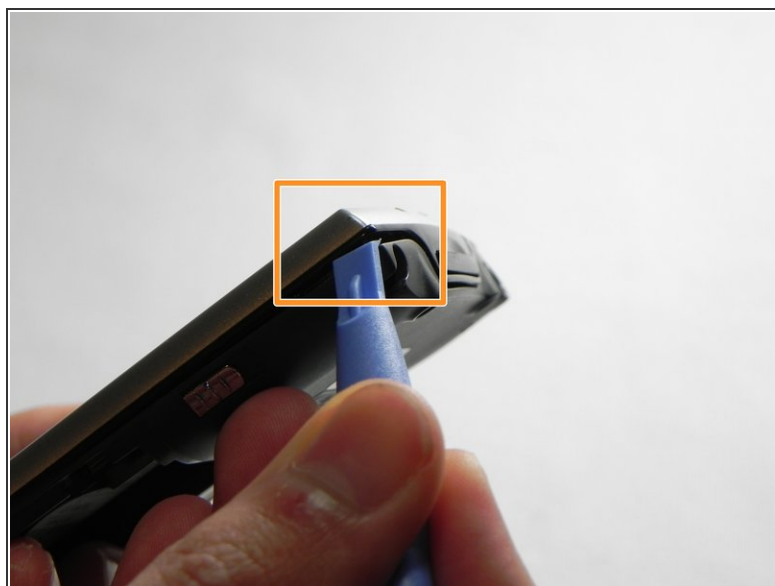
- Remove the four silver screws (T5 x .25 in).

Step 5



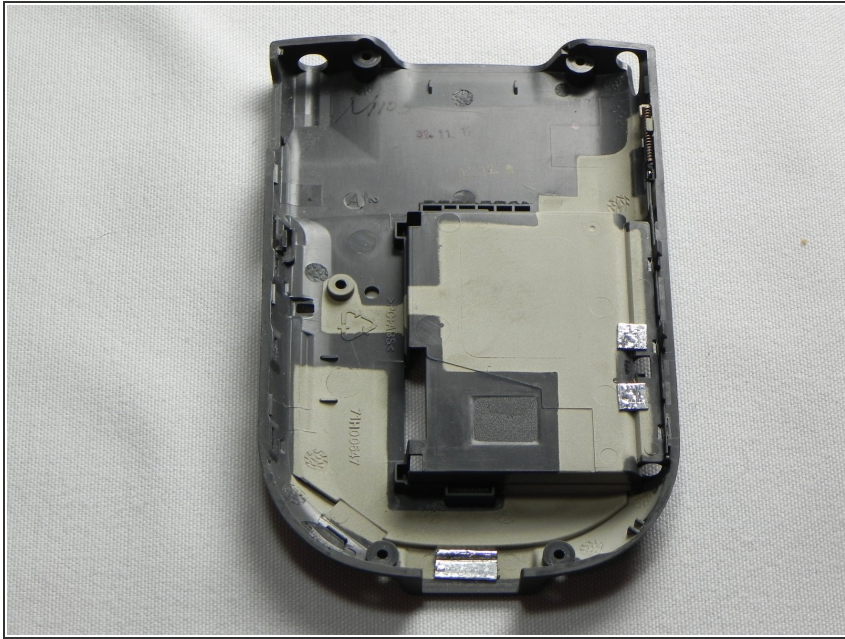
- Remove the single black screw (T5 x .125 in) beneath the HP sticker.

Step 6



- Next, use your plastic removal tool to separate the gray back from the black center piece.
- For better results, start the separation at the corner piece.

Step 7



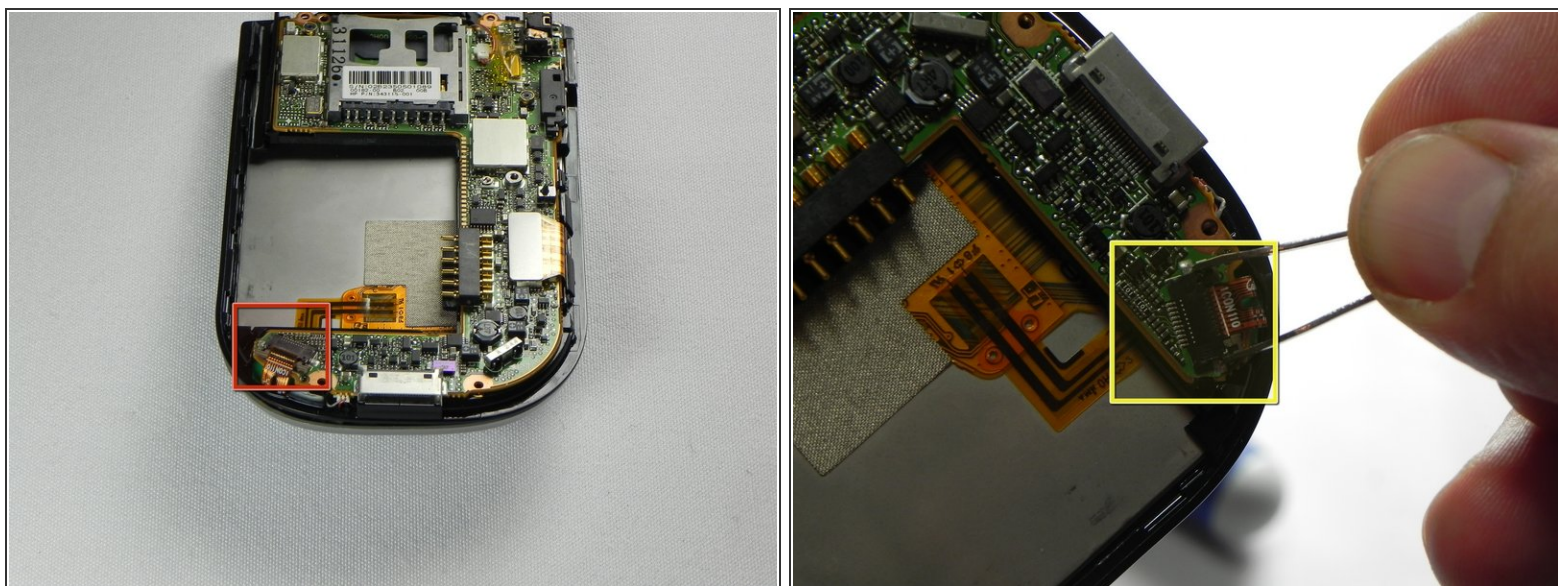
- Remove the back case.

Step 8 — Face Plate



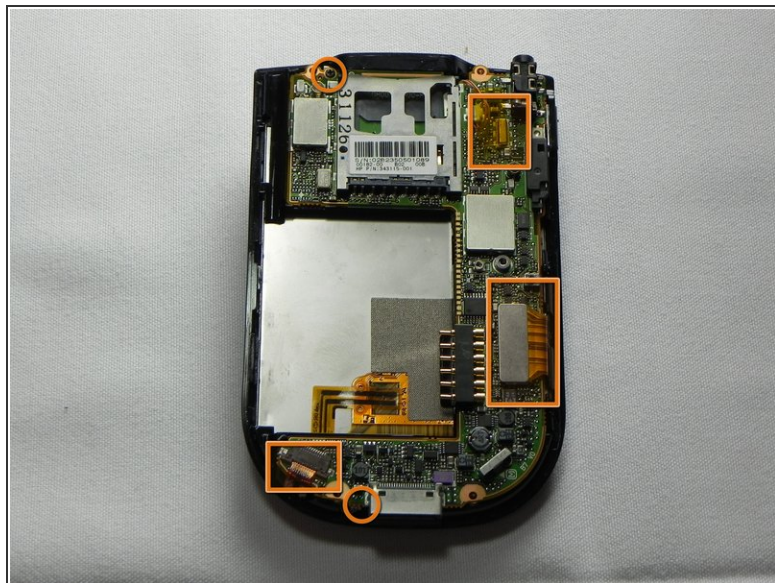
- Now that the back cover is removed, remove the small screw (#00 Philips x .17) to the left of the SD card slot

Step 9



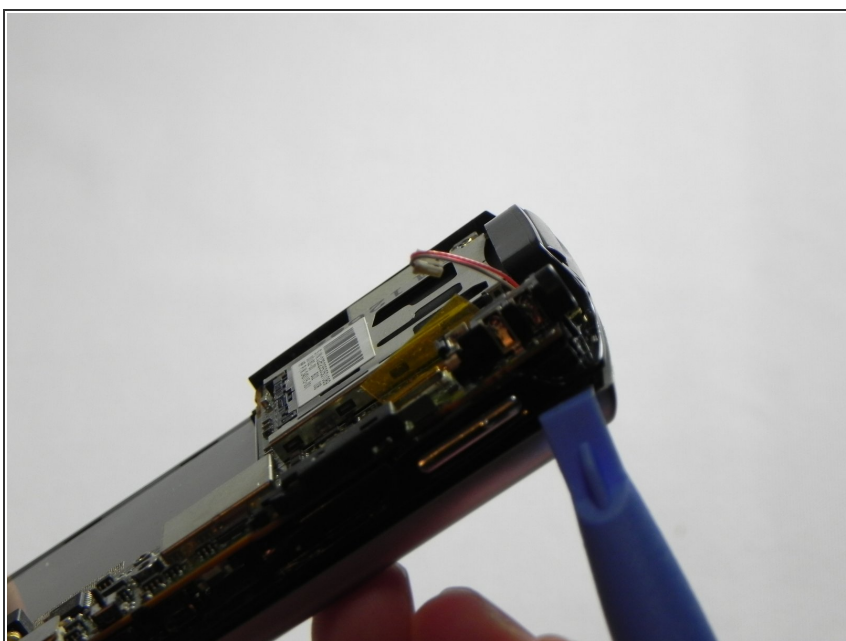
- Next you will need to unlock and remove the ribbon cable
 - Carefully pull back on both sides of the brown bar using metal tweezers, unlocking the cable and slipping it out of the connector
- ⚠ The bar, connector, and cable are fragile components that can be easily broken

Step 10



- Next you need to remove the wire off the bottom of the mother board
- ⓘ The easiest method is to use some metal tweezers and grip the plug close to the connector.
- Make sure all these connections are properly disconnected before separation of the motherboard

Step 11



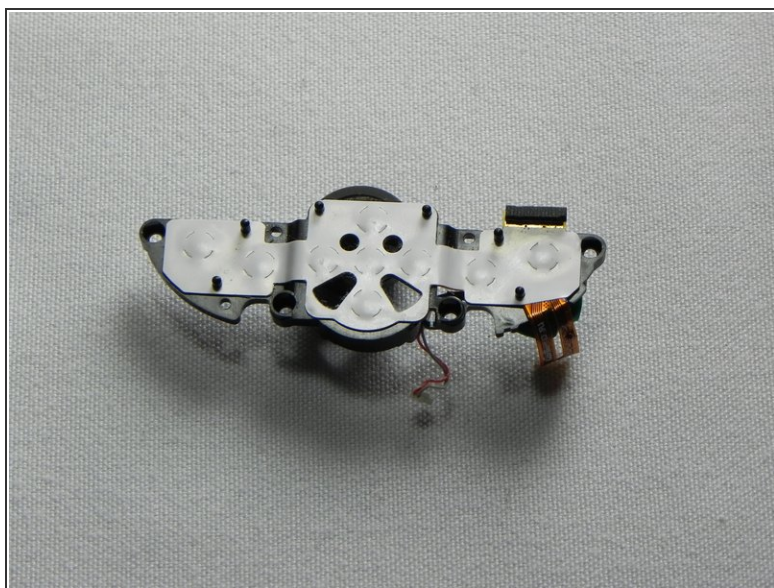
- Next use your plastic removal tool and separate the silver front case from the black frame.

Step 12 — JoyPad buttons



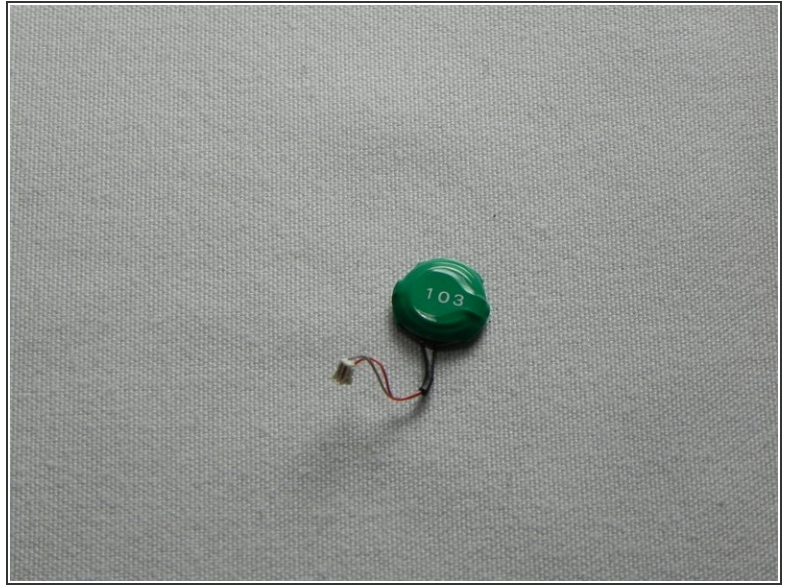
- Remove the 4 screws along the bottom of the faceplate
- They are #00 Philips head screws

Step 13



- Once removed you can easily separate the keys from the body.

Step 14 — Backup Battery



- once the joypad key have been removed use the tweezers to carefully maneuver the wire out of its clip releasing the battery

To reassemble your device, follow these instructions in reverse order.