



# HP m8226x Power Supply Replacement

Replace the power supply in an HP M8226x desktop computer

Written By: Scott Fisher



## INTRODUCTION

This guide will show you what needs to be removed and how to remove it in order to replace the power supply of the HP M8226x. When buying a new power supply, make sure it has both SATA port and 4-pin power connectors on it and has an output of at least 350W.



### TOOLS:

- [Phillips #0 Screwdriver](#) (1)



### PARTS:

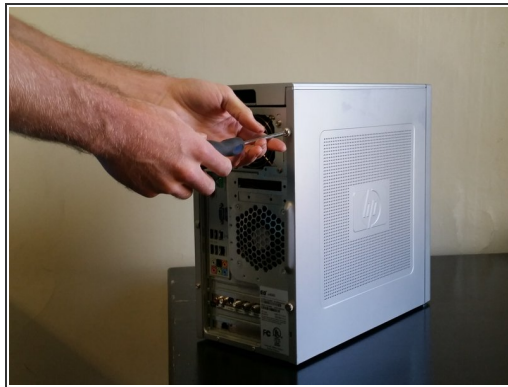
- [New Power Supply](#) (1)

## Step 1 — HP m8226x Power Supply



- Turn off your computer and remove the power cord by pulling it straight out of its socket.

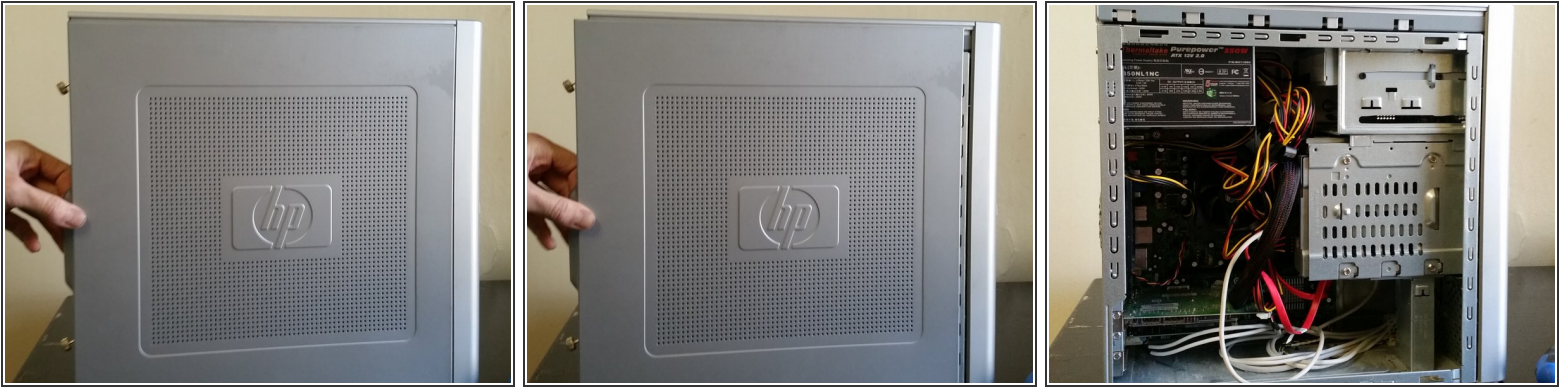
## Step 2



- Remove the two screws holding the right (from the back) case door to the computer.

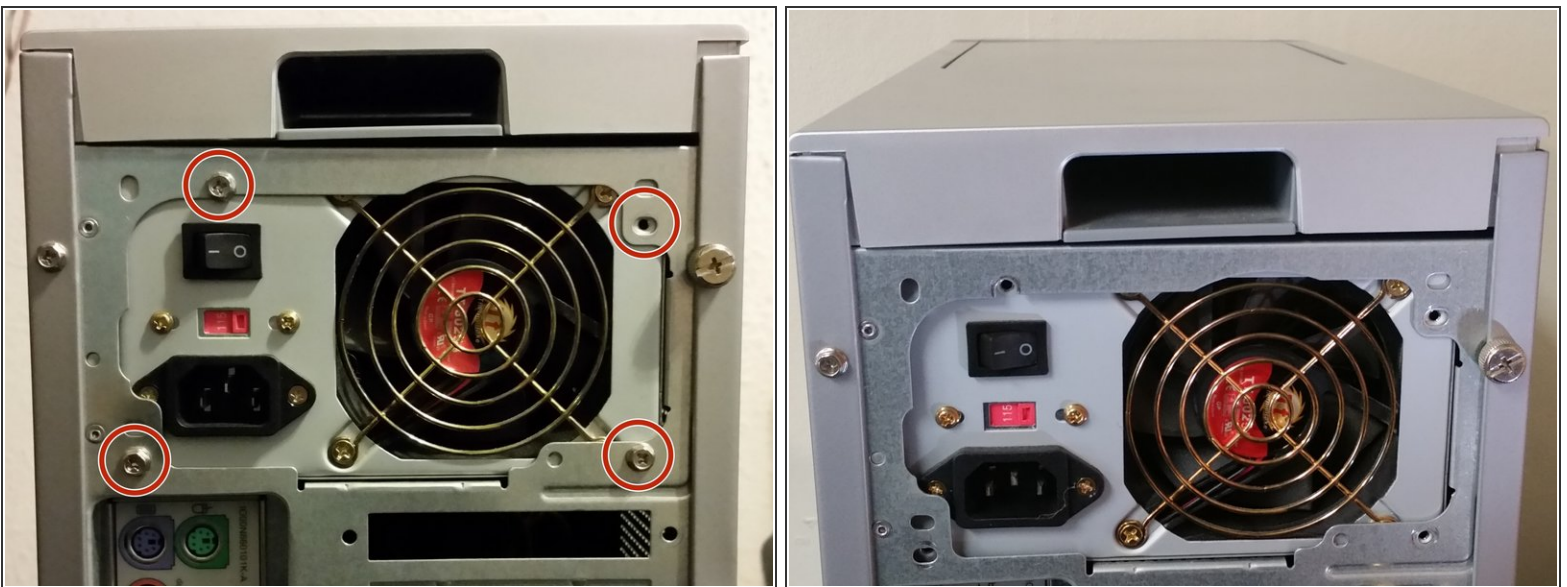


### Step 3



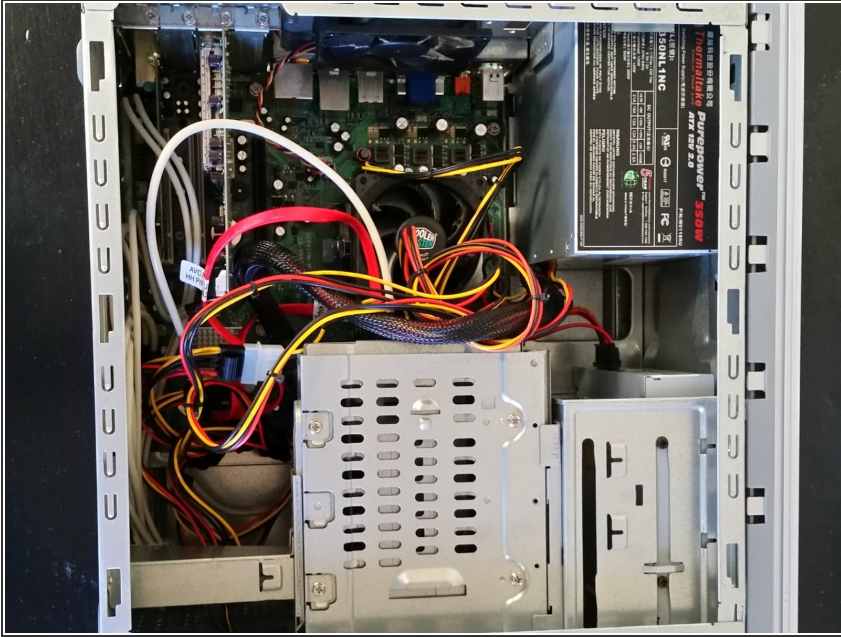
- Remove the side case door by pulling the tab towards the back of the computer with your hand.
- Pull the door outward to remove it.

### Step 4



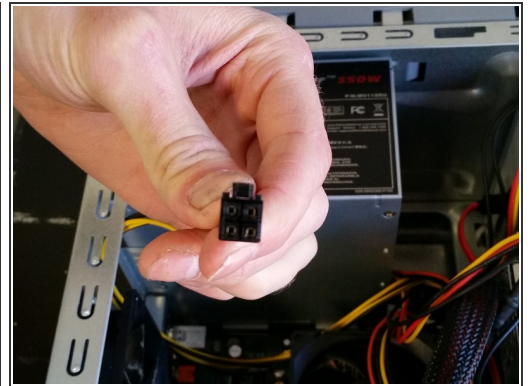
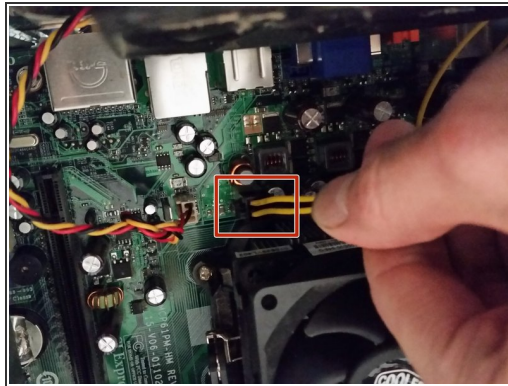
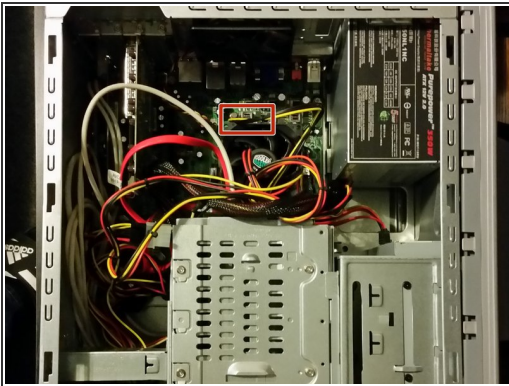
- Remove the four screws holding in the power supply.

## Step 5



- Lay the computer on its side to make it easier to remove the wiring.

## Step 6



- Remove the computer processor's power cord by pinching the clip on the connector and pulling it straight out.

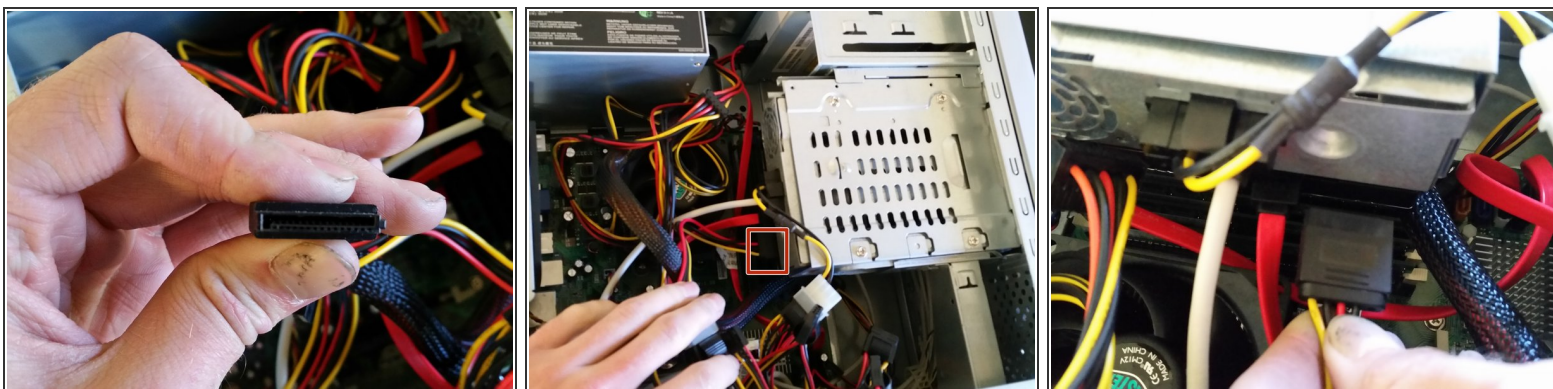


## Step 7



- Remove the power cord from the optical disc drive by pulling it straight out.

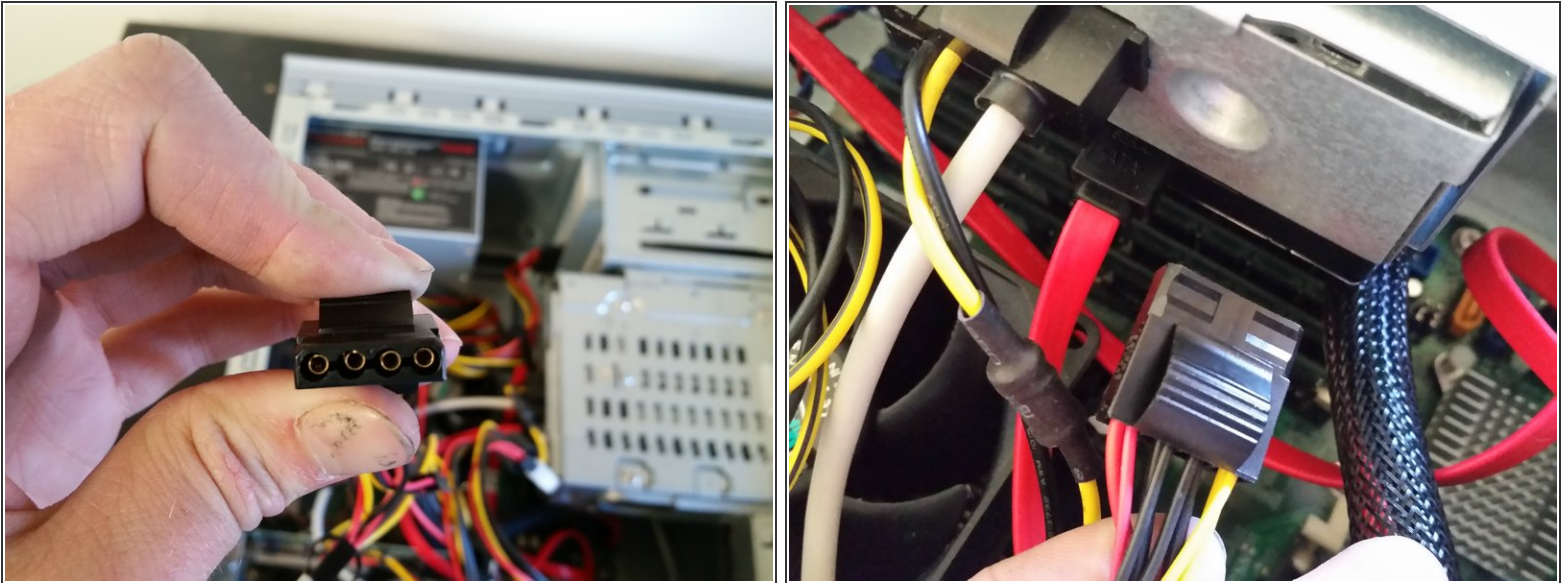
## Step 8



**i** If the hard drive doesn't have a SATA port connector then move to step 9.

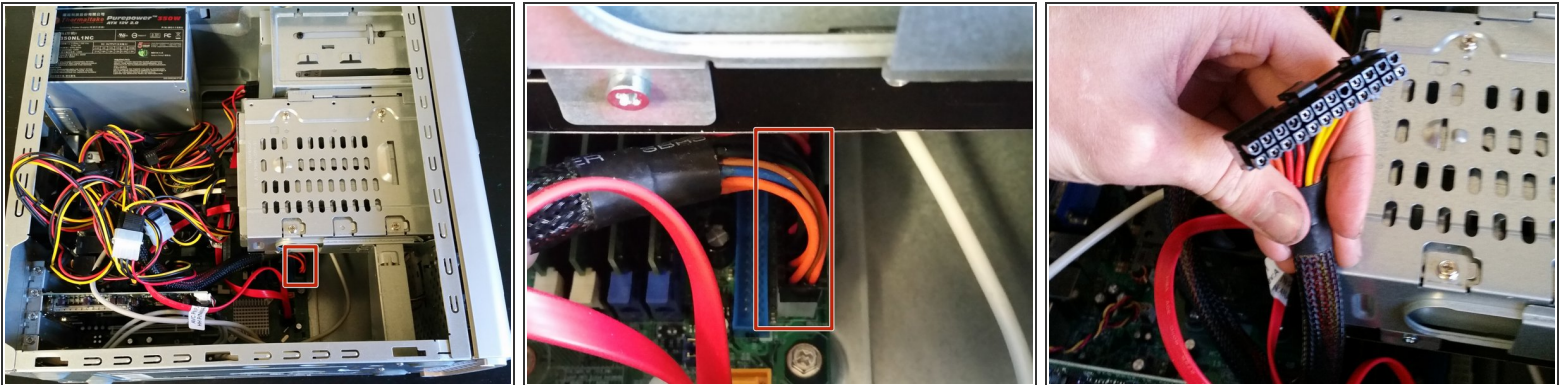
- Disconnect the SATA port connector from the hard drive by pulling it straight out.

## Step 9



- If the hard drive has a 4-pin Molex connector, pinch the two clips on the connector and pull it straight out to remove it.

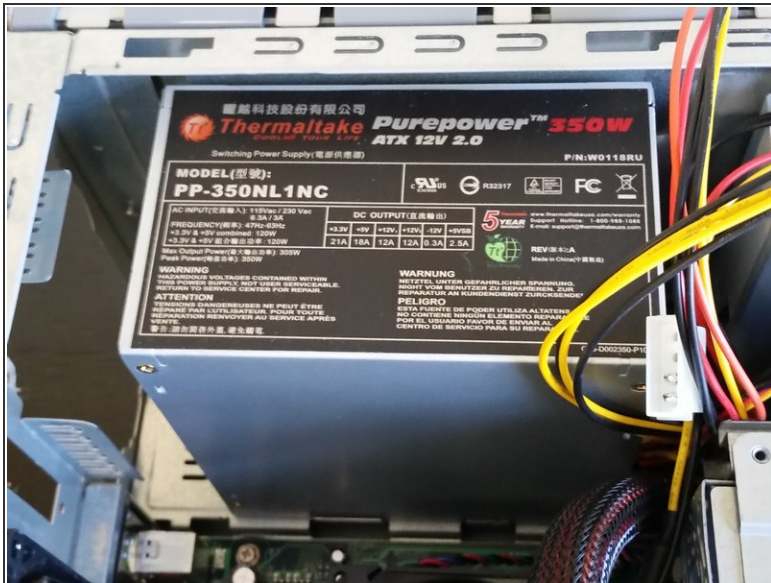
## Step 10



- Remove the power to the motherboard by pinching the clip and pulling it straight out.



## Step 11



- Remove the power supply by pushing it out from the back of the computer and lifting it out of the computer.

To reassemble your device, follow these instructions in reverse order.