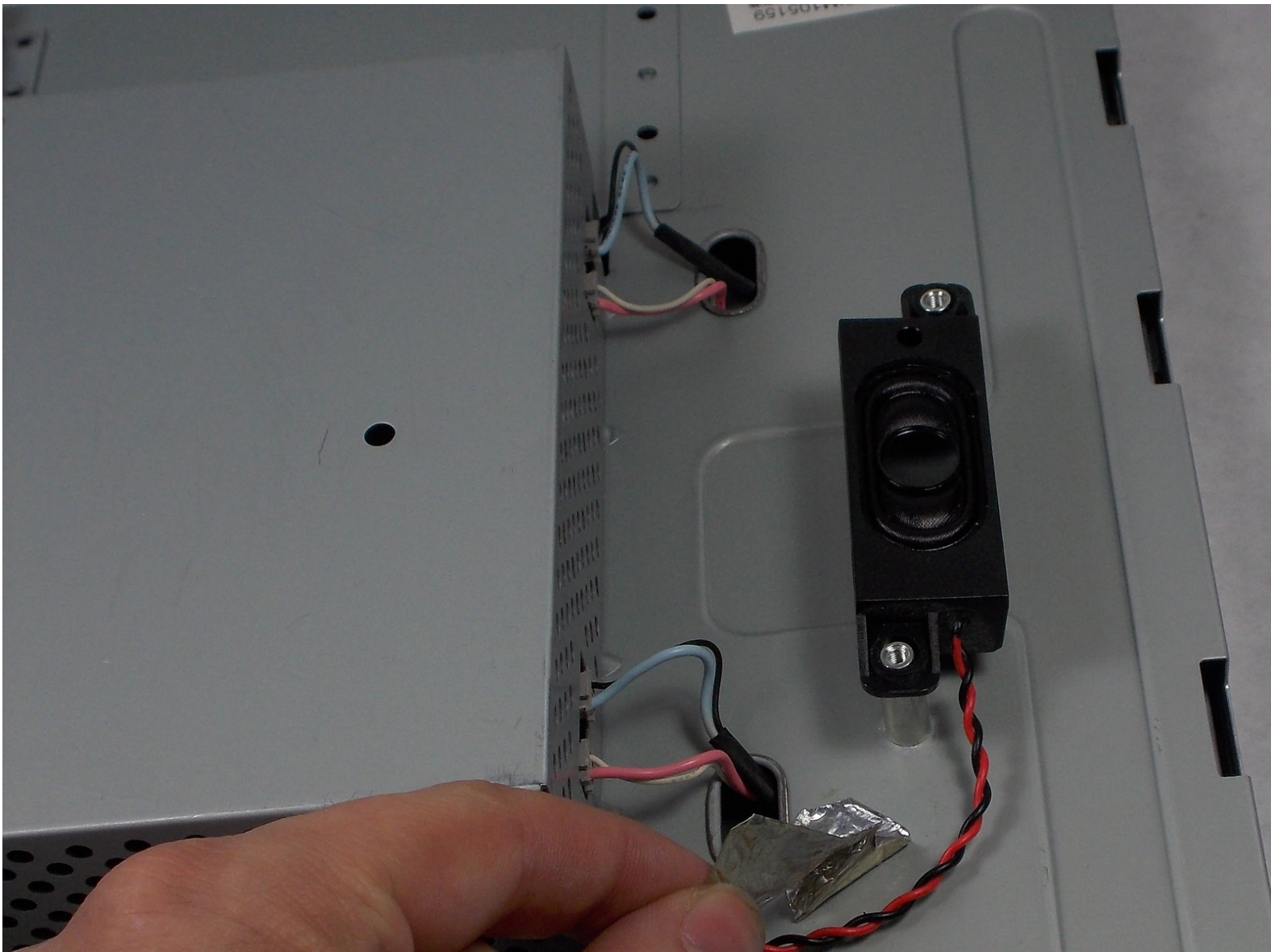




HP w2216h Speaker Replacement

This guide will guide the reader through removing the HP w2216h's speakers

Written By: Patrick Aucoin



INTRODUCTION

Is sound not coming out the speakers or is the sound distorted? You should replace the speaker's in the monitor.

TOOLS:

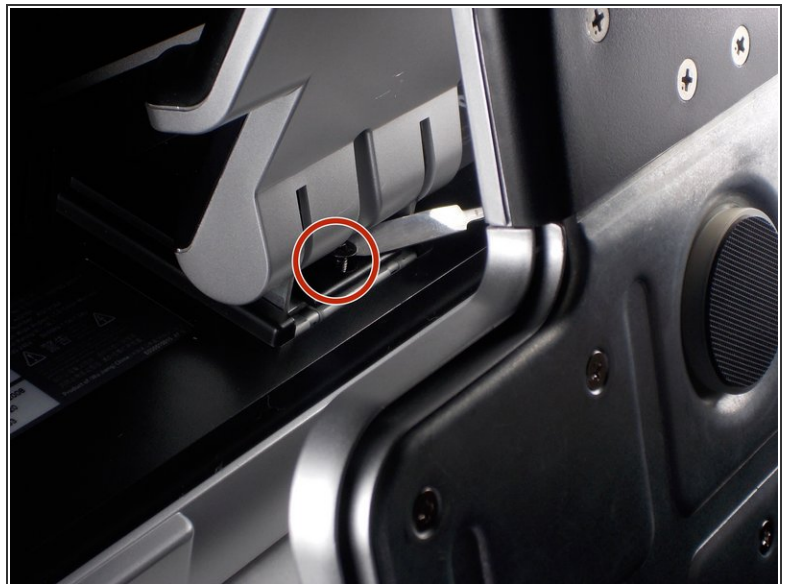
- [Phillips #1 Screwdriver](#) (1)
 - [Phillips #000 Screwdriver](#) (1)
 - [Metal Spudger](#) (1)
 - [Safety Glasses](#) (1)
 - [Anti-Static Wrist Strap](#) (1)
-

Step 1 — Screen



- ⚠ 'Make sure you are grounded, the power supply is not connected and you are wearing safety goggles.
- Use the Philips #000 screwdriver to remove the 4 round 12mm screws on the back panel.

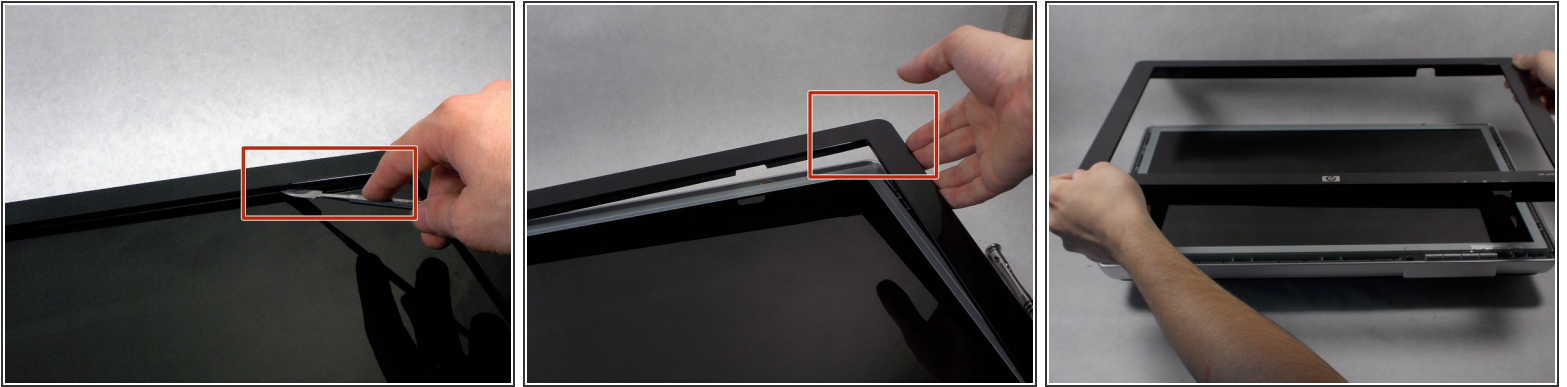
Step 2





- Using a Philips #000 head remove 2 flat 12 mm screws above stand mounting bracket.
- Using a PH1 Philips head with the 150 mm flexible extension remove 1 Philips head screw under the stand mounting bracket.
- Stand will easily pull off.

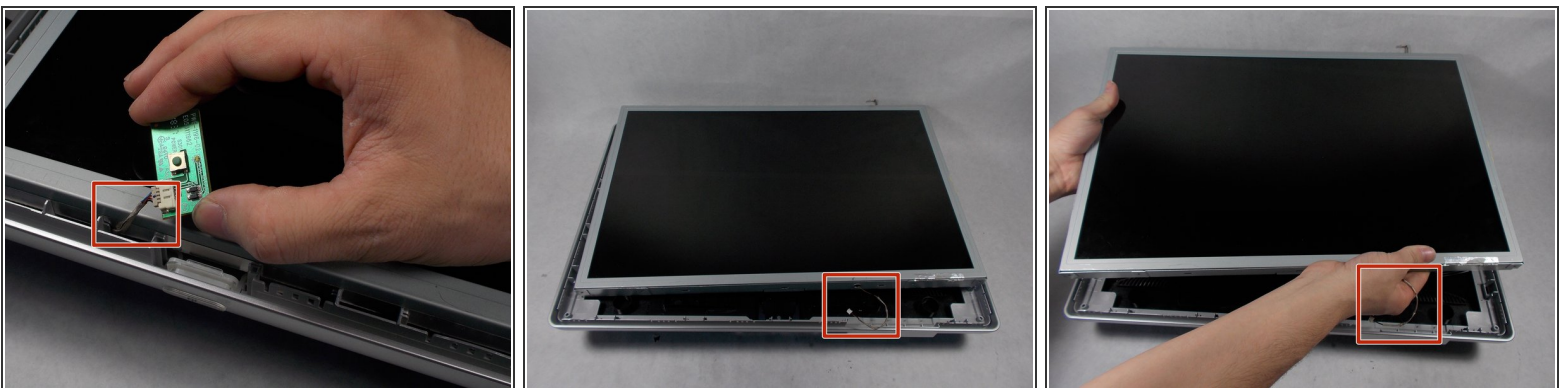
This document was generated on 2019-09-21 08:38:26 PM (MST).


Step 3



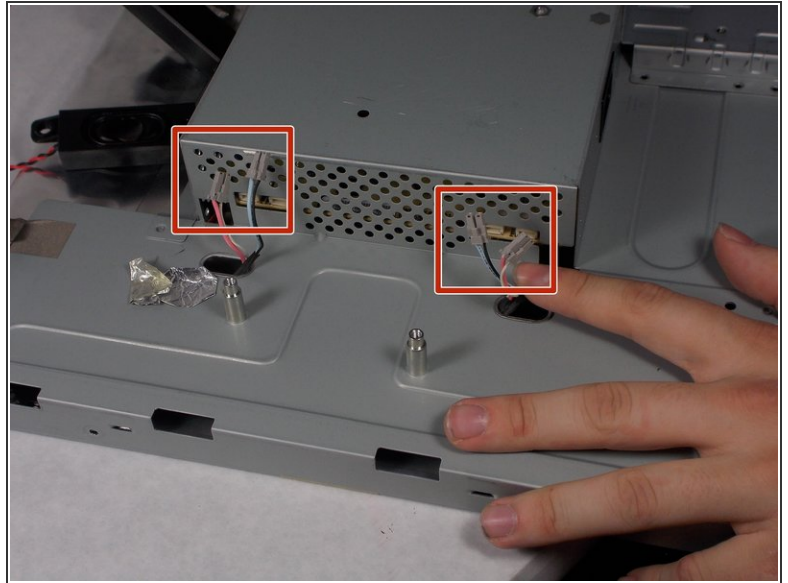
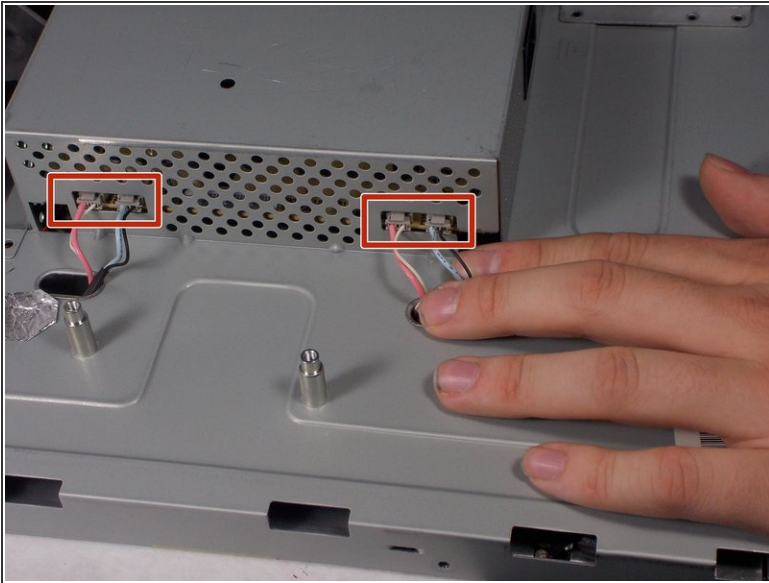
-  Do not put the metal spudger between the metal and the glass. It needs to go under the bezel and above the metal.
- Turn monitor so that the screen is facing you.
 - Pry the black bezel from above the metal by placing your metal spudger between the bezel and the metal and twisting the tool slightly.
-  The best places to pry are in the lower left and lower right corners of the black bezel.

Step 4



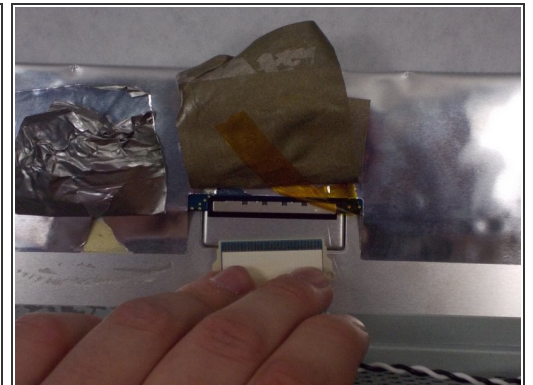
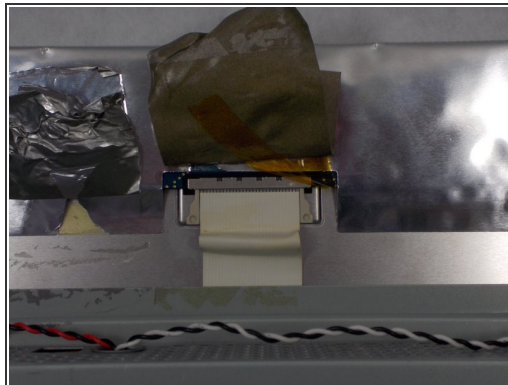
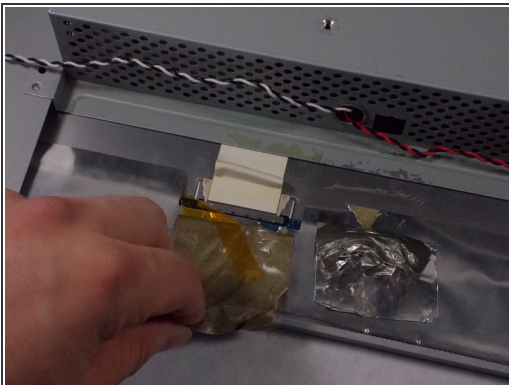
-  Be careful of the wires attaching the power button and the control buttons. Show extreme caution to ensure the button is not damaged.
- Lift the screen assembly from the plastic housing from the corners.

Step 5



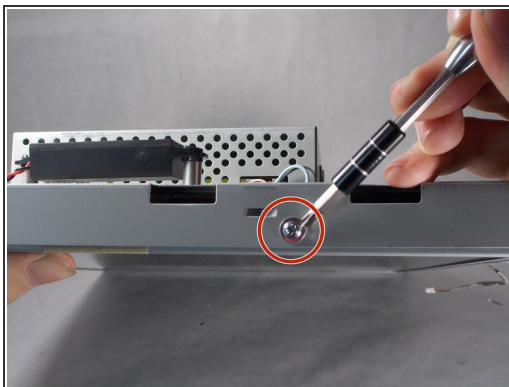
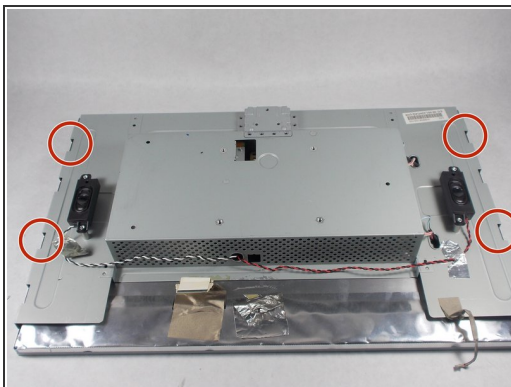
- Remove the 4 connectors from the left side of the monitor on the back.

Step 6



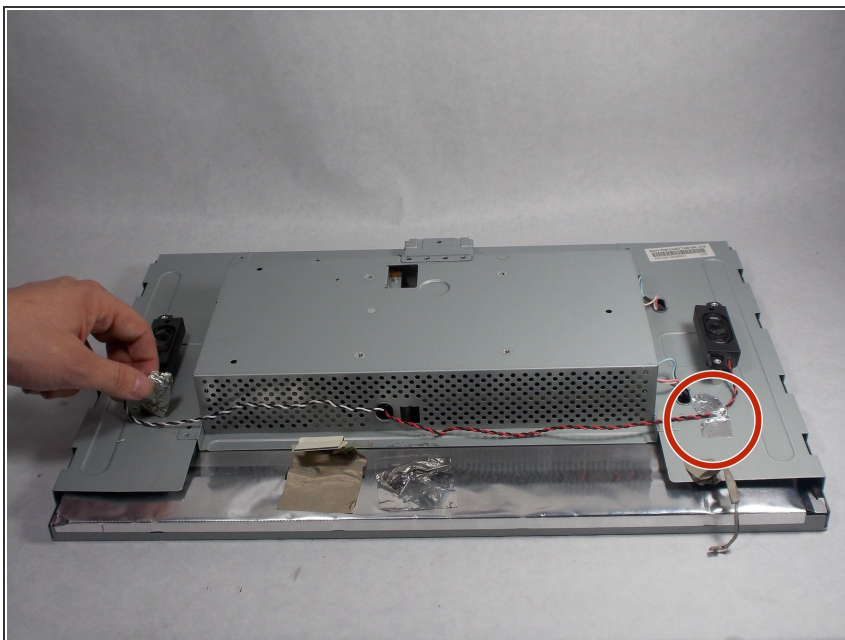
- Lift the gray tape of the top of the monitor to expose the ribbon cable.
- Remove the ribbon cable by sliding the connector towards the center of the screen assembly.
- Lift the reflective tape next to the gray tape.

Step 7



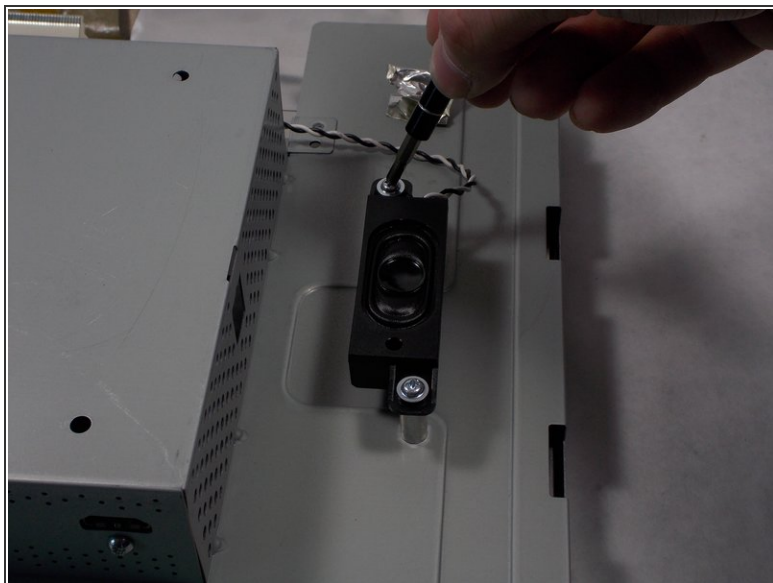
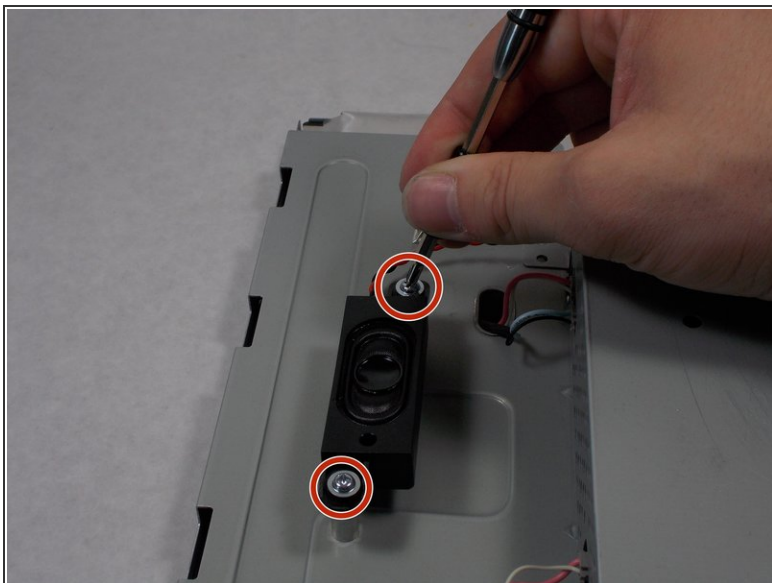
- Remove the 4 PH1 8mm Philips round screws on the outer edge of the screen's assembly.
- Lift the screen from the screen assembly.

Step 8 — Speakers



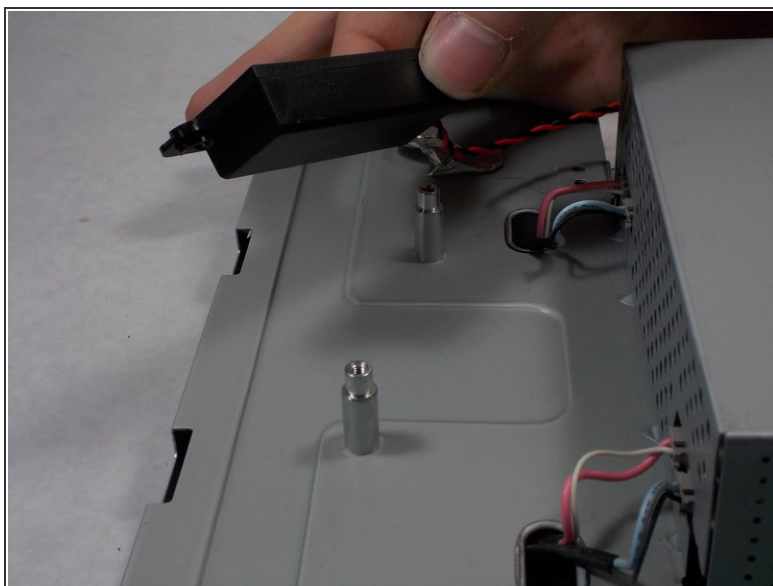
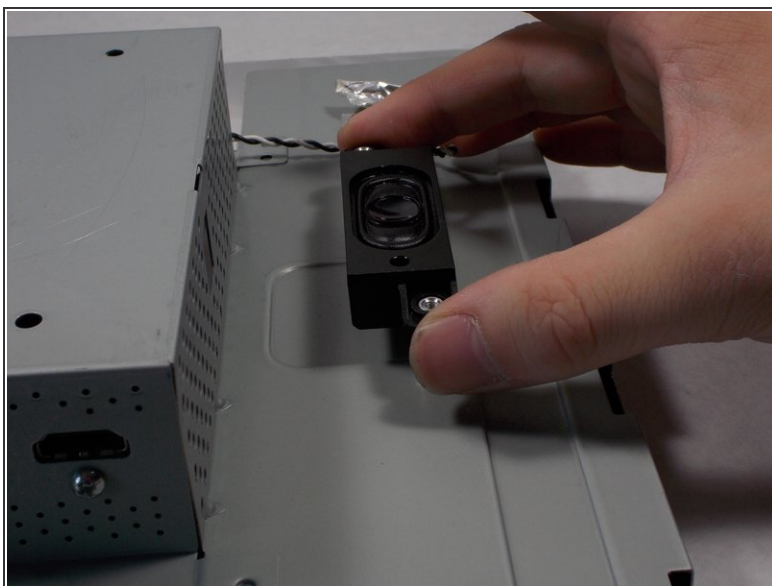
- Remove the tape holding each speakers wire to the screen assembly.

Step 9



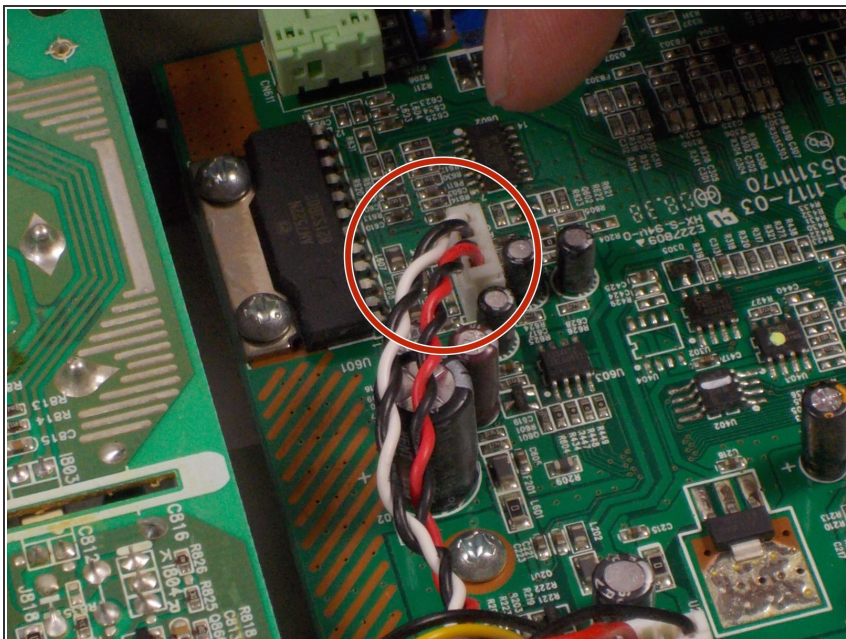
- Remove the two 8mm Philips #000 head screws on each speaker.

Step 10



- Remove the speakers by lifting them vertically from the screen assembly.

Step 11



- Remove the cables that connects the speakers to the signal output board.

To reassemble your device, follow these instructions in reverse order.