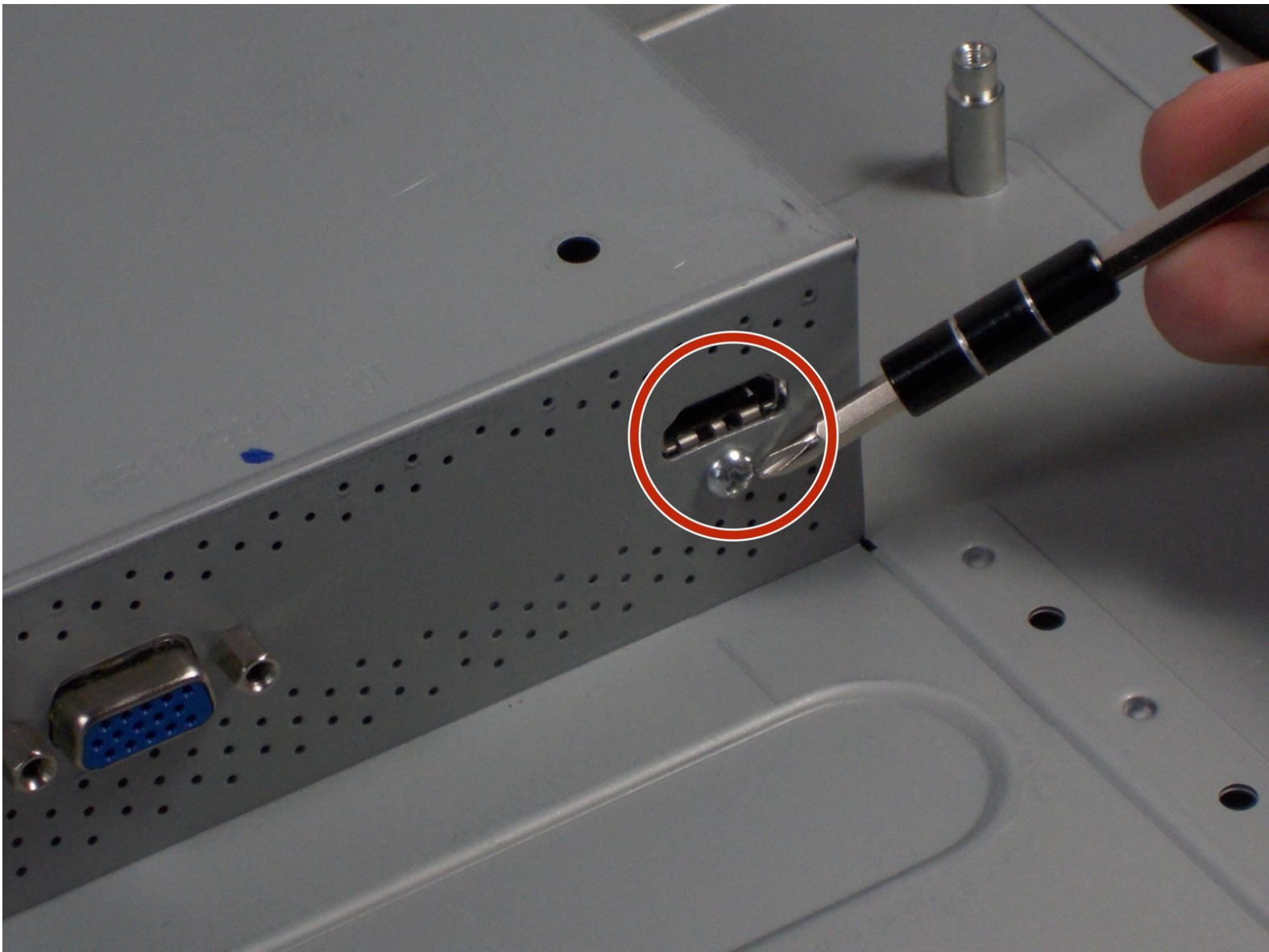




HP w2216h Video Port Board Replacement

This Guide will teach the reader how to remove the Signal Output Ports from an HP w2216h monitor.

Written By: Brandon Langton



INTRODUCTION

The HP w2216h has 3 signal output ports. One is an HDMI port which outputs video and sound. One is a VGA port which outputs video. And one is an audio port for external speakers. Each of these ports are removed as a single part.



TOOLS:

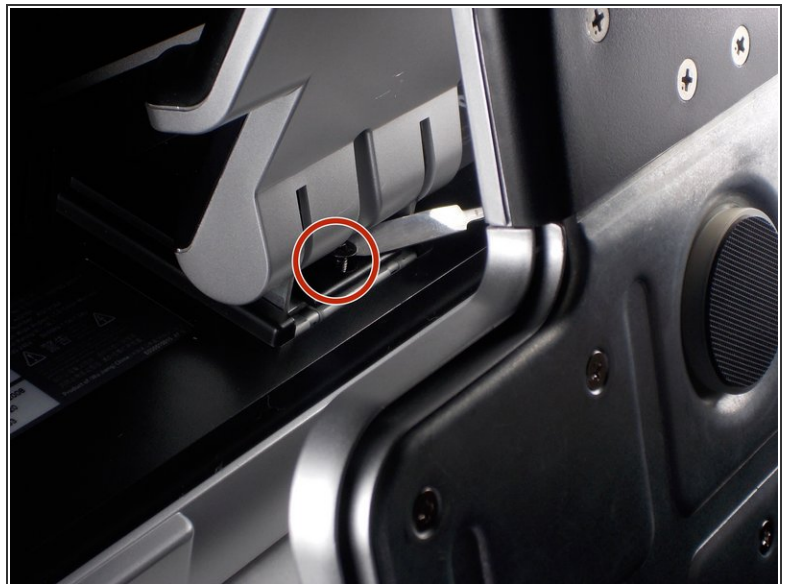
- [Phillips #1 Screwdriver](#) (1)
 - [Phillips #000 Screwdriver](#) (1)
 - [Metal Spudger](#) (1)
 - [Safety Glasses](#) (1)
 - [Anti-Static Wrist Strap](#) (1)
 - [2.5 mm Hex Bit](#) (1)
-

Step 1 — Screen



- ⚠ 'Make sure you are grounded, the power supply is not connected and you are wearing safety goggles.
- Use the Philips #000 screwdriver to remove the 4 round 12mm screws on the back panel.

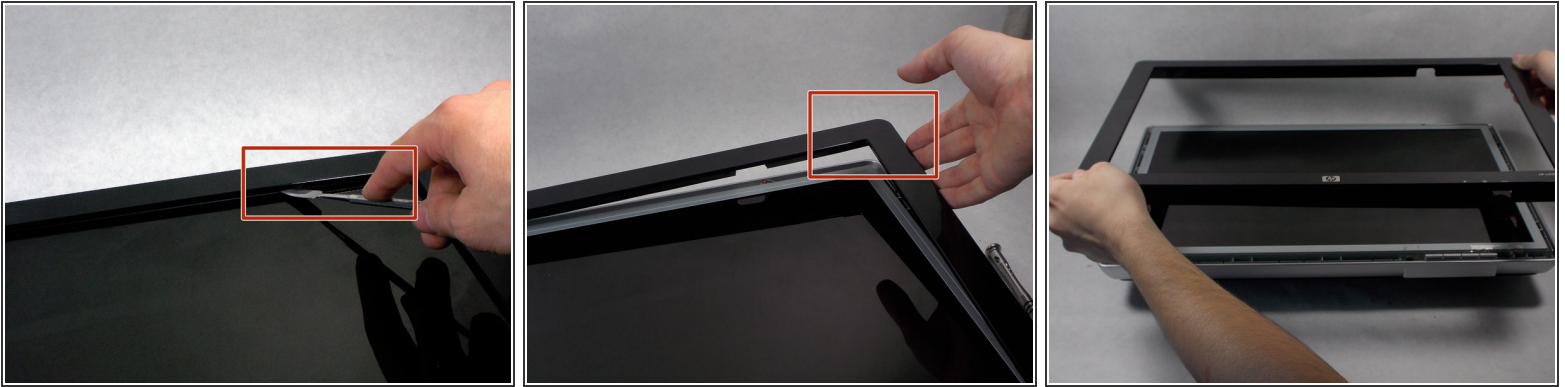
Step 2





- Using a Philips #000 head remove 2 flat 12 mm screws above stand mounting bracket.
- Using a PH1 Philips head with the 150 mm flexible extension remove 1 Philips head screw under the stand mounting bracket.
- Stand will easily pull off.

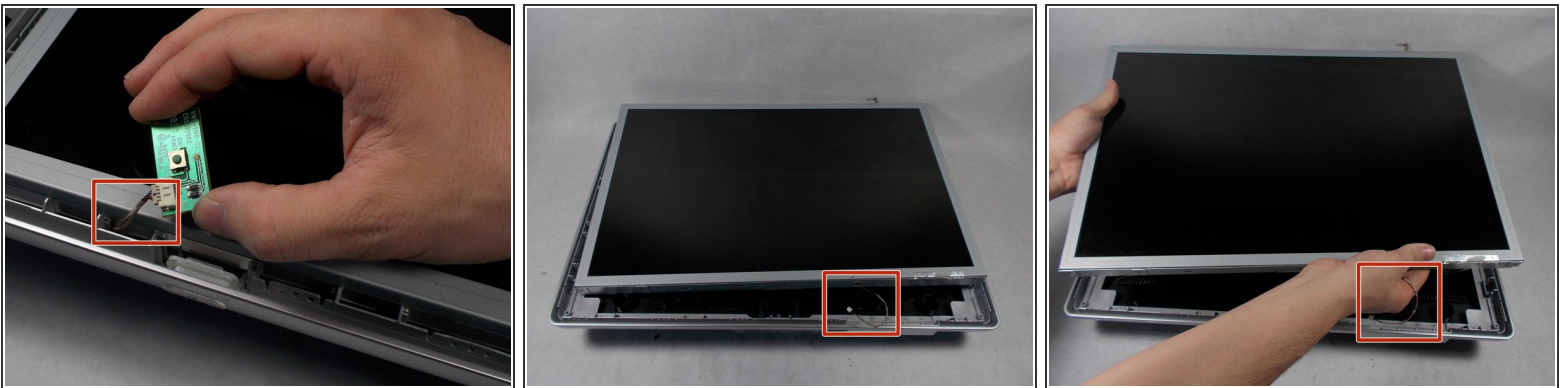
This document was generated on 2019-09-20 12:41:39 AM (MST).


Step 3



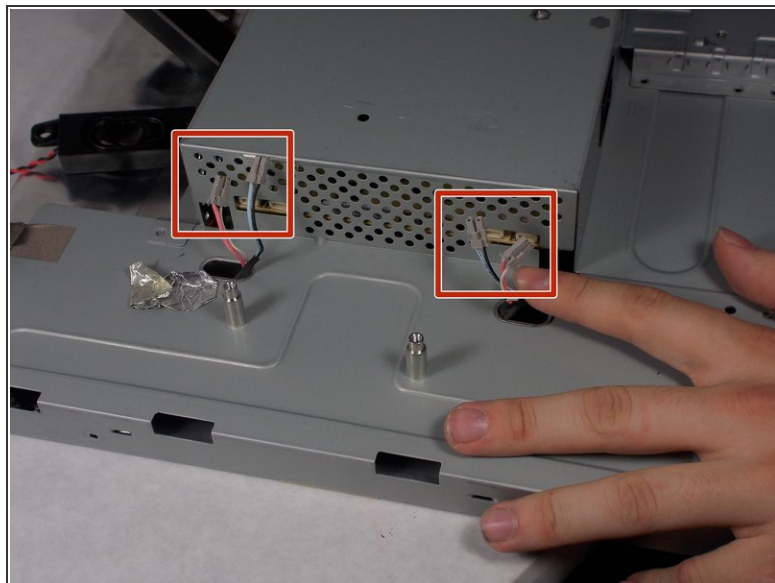
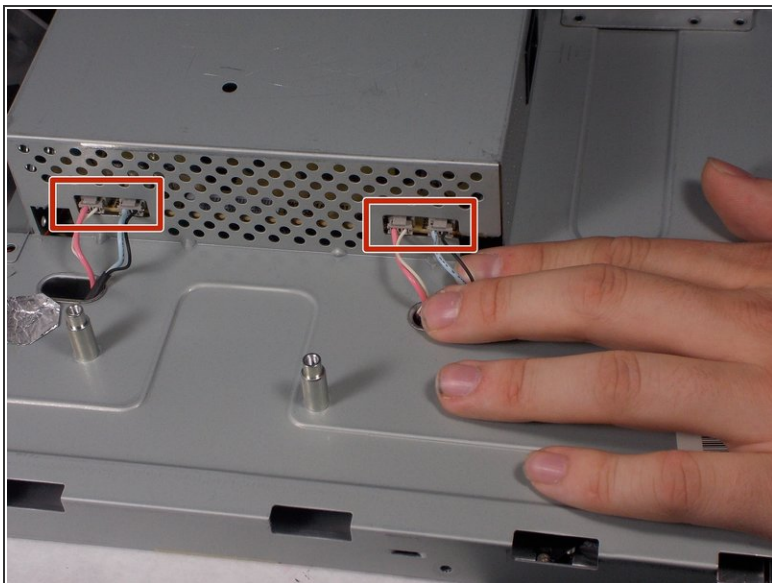
-  Do not put the metal spudger between the metal and the glass. It needs to go under the bezel and above the metal.
- Turn monitor so that the screen is facing you.
 - Pry the black bezel from above the metal by placing your metal spudger between the bezel and the metal and twisting the tool slightly.
-  The best places to pry are in the lower left and lower right corners of the black bezel.

Step 4



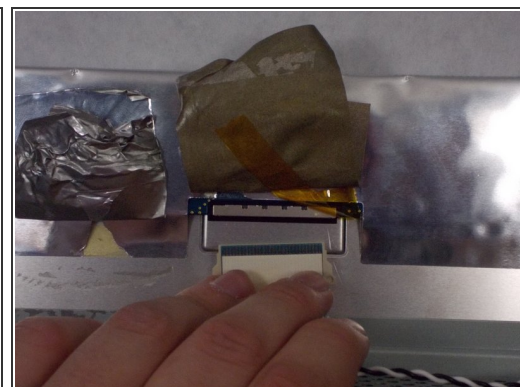
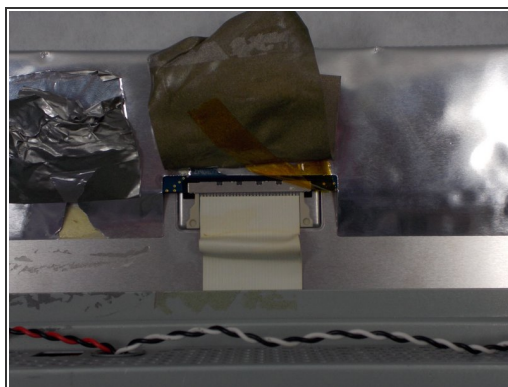
-  Be careful of the wires attaching the power button and the control buttons. Show extreme caution to ensure the button is not damaged.
- Lift the screen assembly from the plastic housing from the corners.

Step 5



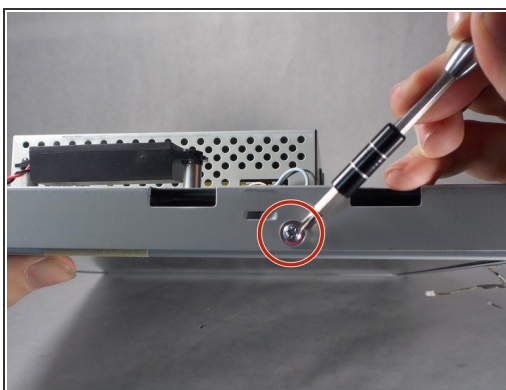
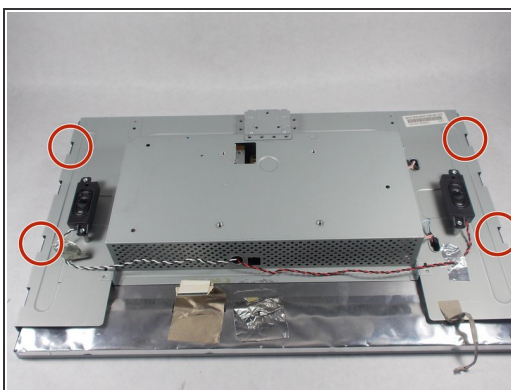
- Remove the 4 connectors from the left side of the monitor on the back.

Step 6



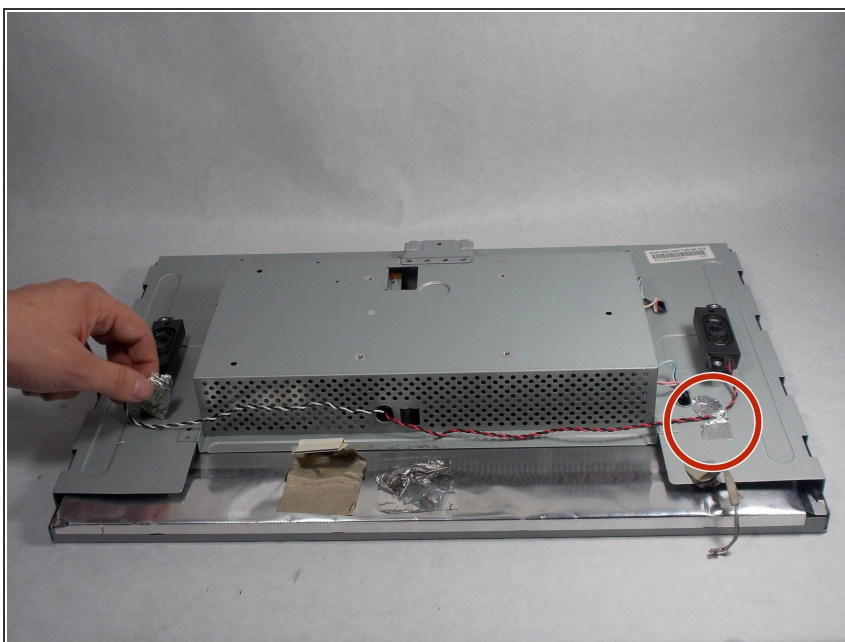
- Lift the gray tape of the top of the monitor to expose the ribbon cable.
- Remove the ribbon cable by sliding the connector towards the center of the screen assembly.
- Lift the reflective tape next to the gray tape.

Step 7



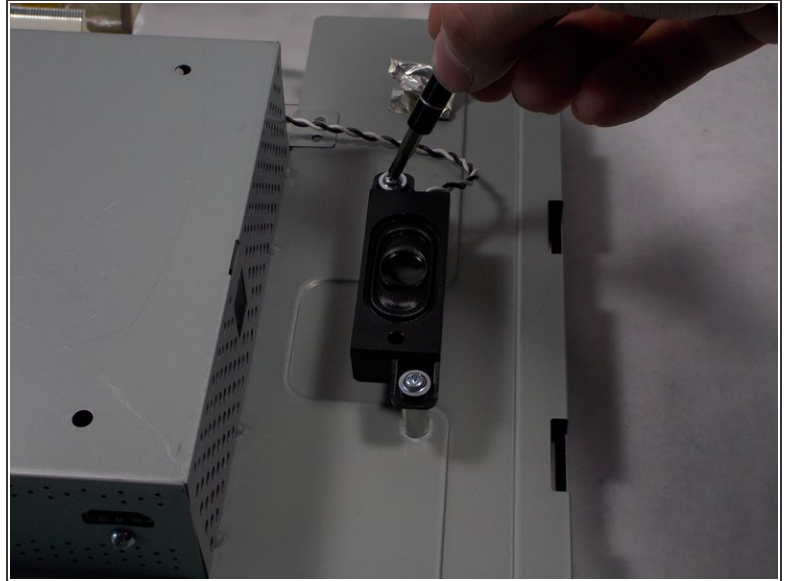
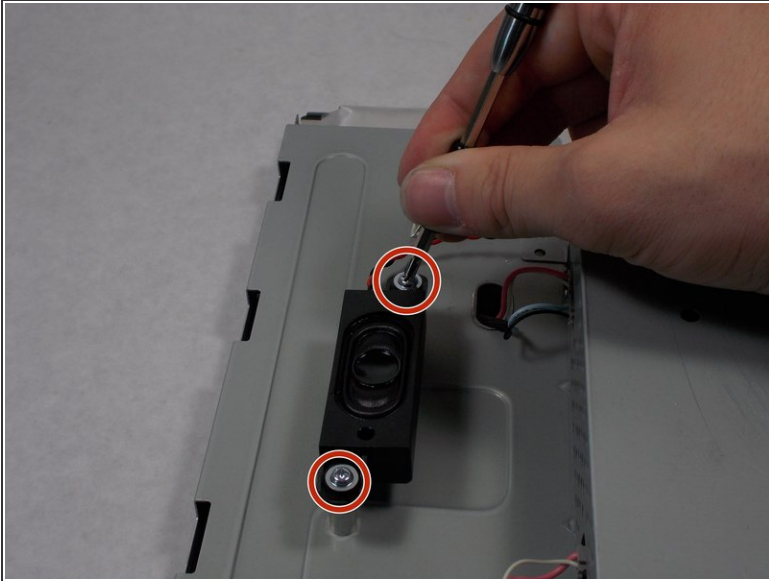
- Remove the 4 PH1 8mm Philips round screws on the outer edge of the screen's assembly.
- Lift the screen from the screen assembly.

Step 8 — Speakers



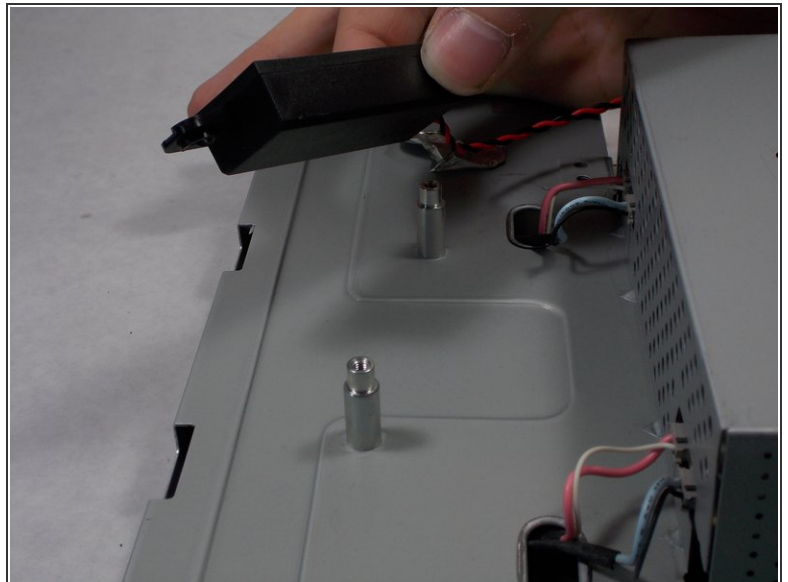
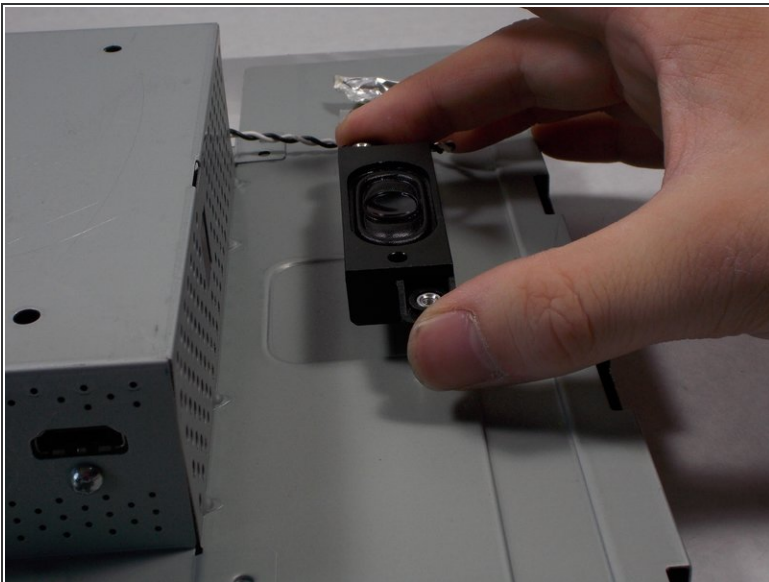
- Remove the tape holding each speakers wire to the screen assembly.

Step 9



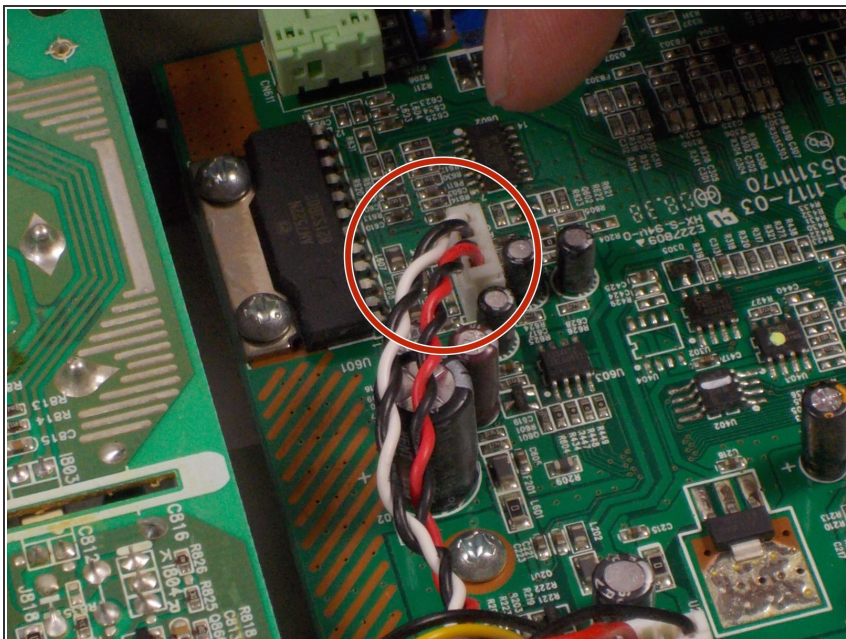
- Remove the two 8mm Philips #000 head screws on each speaker.

Step 10



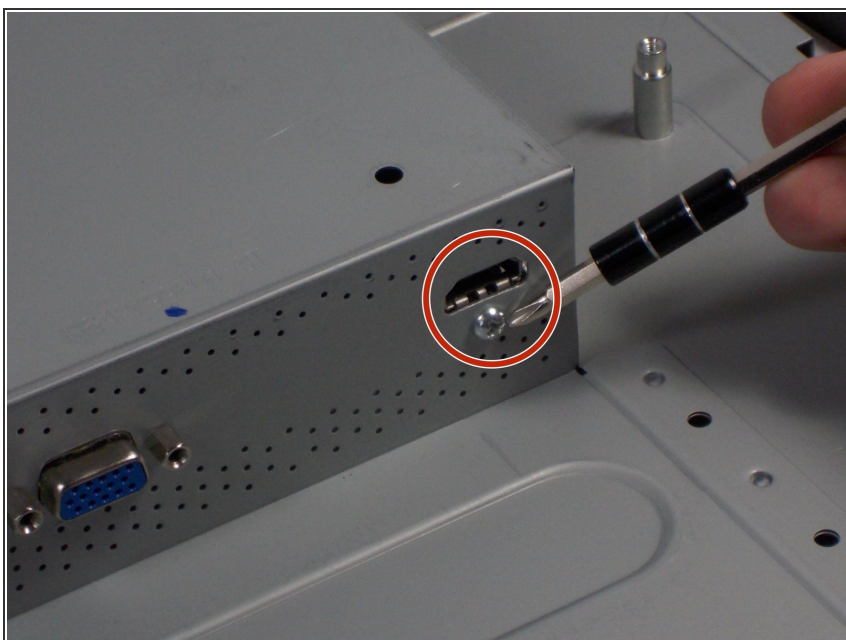
- Remove the speakers by lifting them vertically from the screen assembly.

Step 11



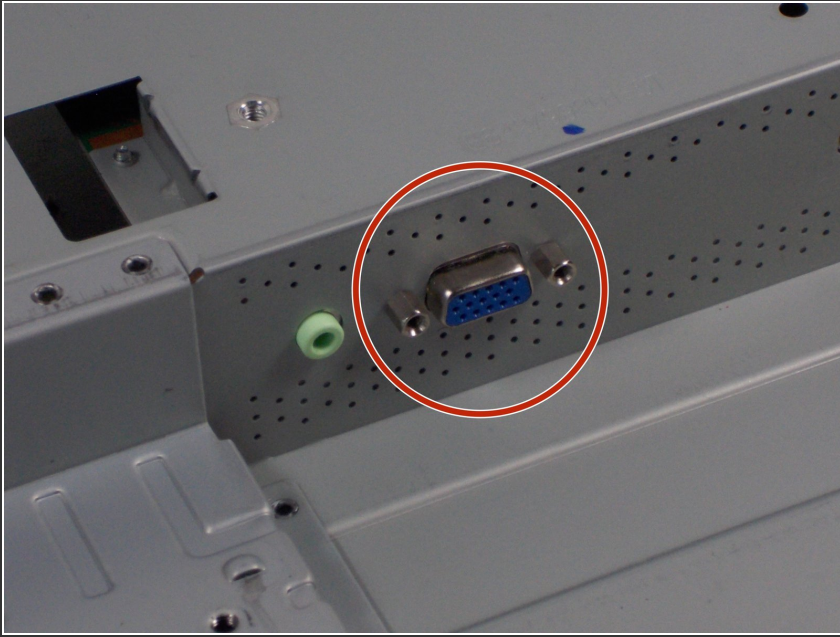
- Remove the cables that connects the speakers to the signal output board.

Step 12 — Video Port Board



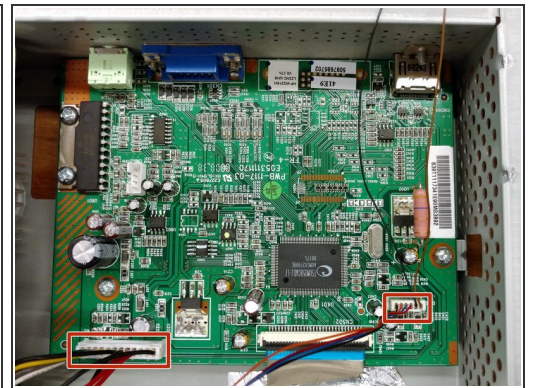
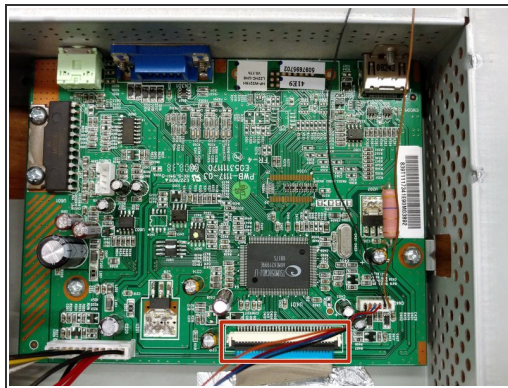
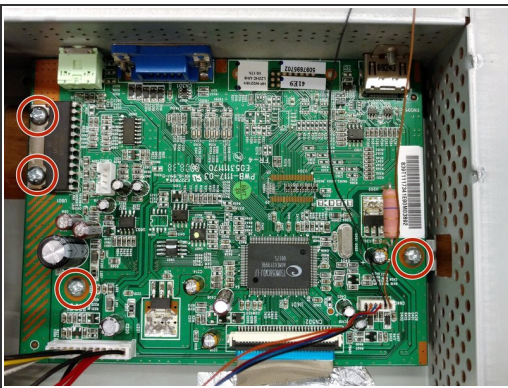
- Remove the single Phillips #000 head screw above the HDMI port .

Step 13



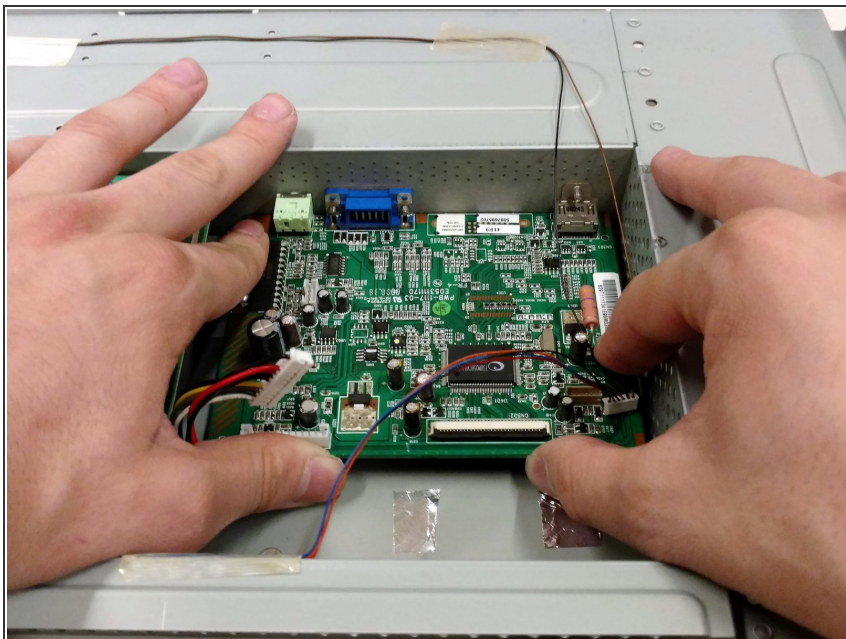
- Remove the two 2.5mm hex screws on either side of the VGA port

Step 14



- Remove all 8mm Phillips #000 screws holding the board in place.
- Remove the ribbon cable towards the bottom of the board by sliding the cable away from the board.
- Remove both wire busses still on the board.

Step 15



- Lift the board out of the screen assembly by first pulling the board away from the wall where the ports mount, then upward.

To reassemble your device, follow these instructions in reverse order.