



HP x2 10-p010wm Battery Replacement

This guide will show you how to open the top and bottom of HP x2 10-p010wm to access its battery.

Written By: Vinh Phan



INTRODUCTION

Model Number : HP x2 10-p010wm

If you are having troubles charging your HP x2 10-p010wm and your device failed the battery diagnose test from HP, it is most likely that you need to a battery replacement.

This guide will show you how to take apart the screen in order to access to the battery. But we recommend you to check our [troubleshooting page](#) first.



TOOLS:

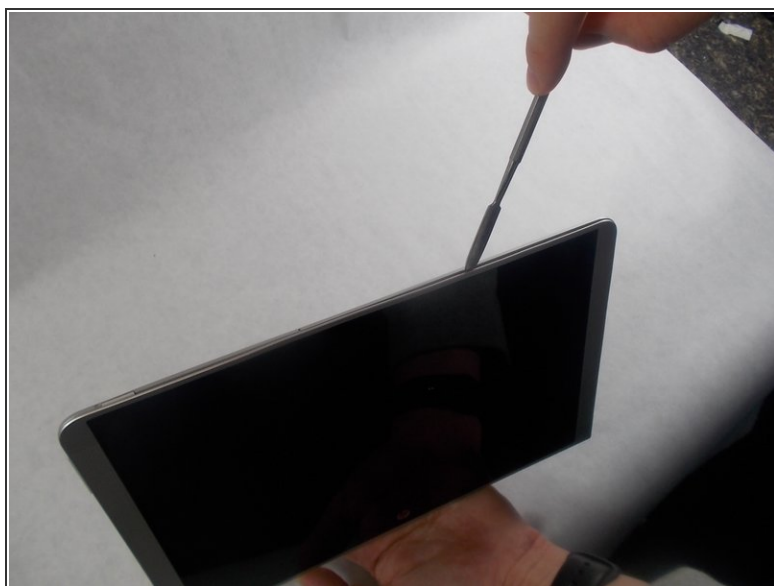
- [Phillips #0 Screwdriver](#) (1)
 - [Metal Spudger](#) (1)
-

Step 1 — Battery



- Pull the screen away from the keyboard.

Step 2



- Insert a spudger into the space between the screen and computer and gently pry the two pieces apart. Continue this around the whole screen.

Step 3



- Slowly disconnect the thin wire attaching the screen to the rest of the computer by holding one end and sliding it down.

⚠ Do not pull up too hard; slowly slide it towards the screen.

Step 4



- Remove the eight 4mm Phillips #00 screws from the metal plate.

Step 5



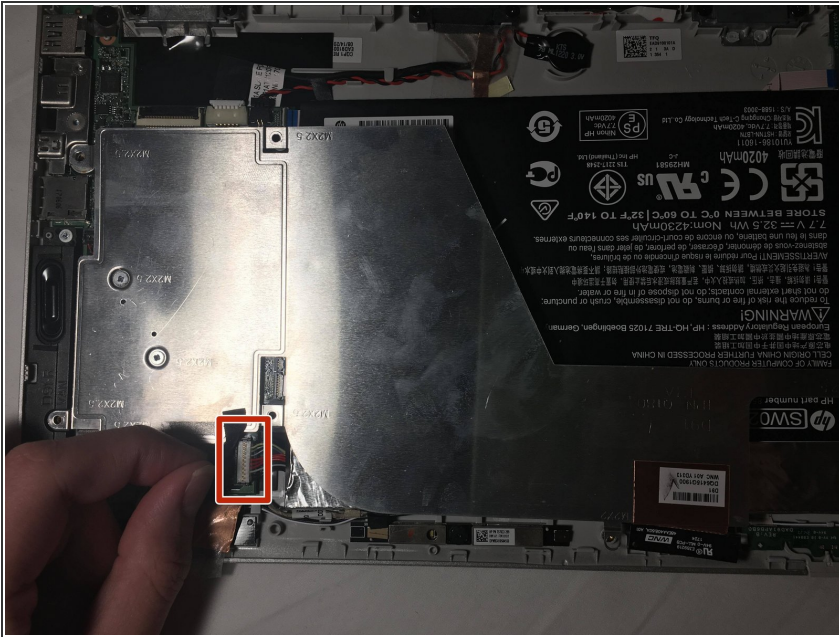
- Slowly peel up any tape securing the wire to the metal cover.
- Remove the metal cover to access the battery.

Step 6



- Remove the 4mm screw on the side.

Step 7



- Remove the black tape.
- Pull the battery connector towards the battery to disconnect it from its socket.

Step 8



- Remove the battery.

To reassemble your device, follow these instructions in reverse order.