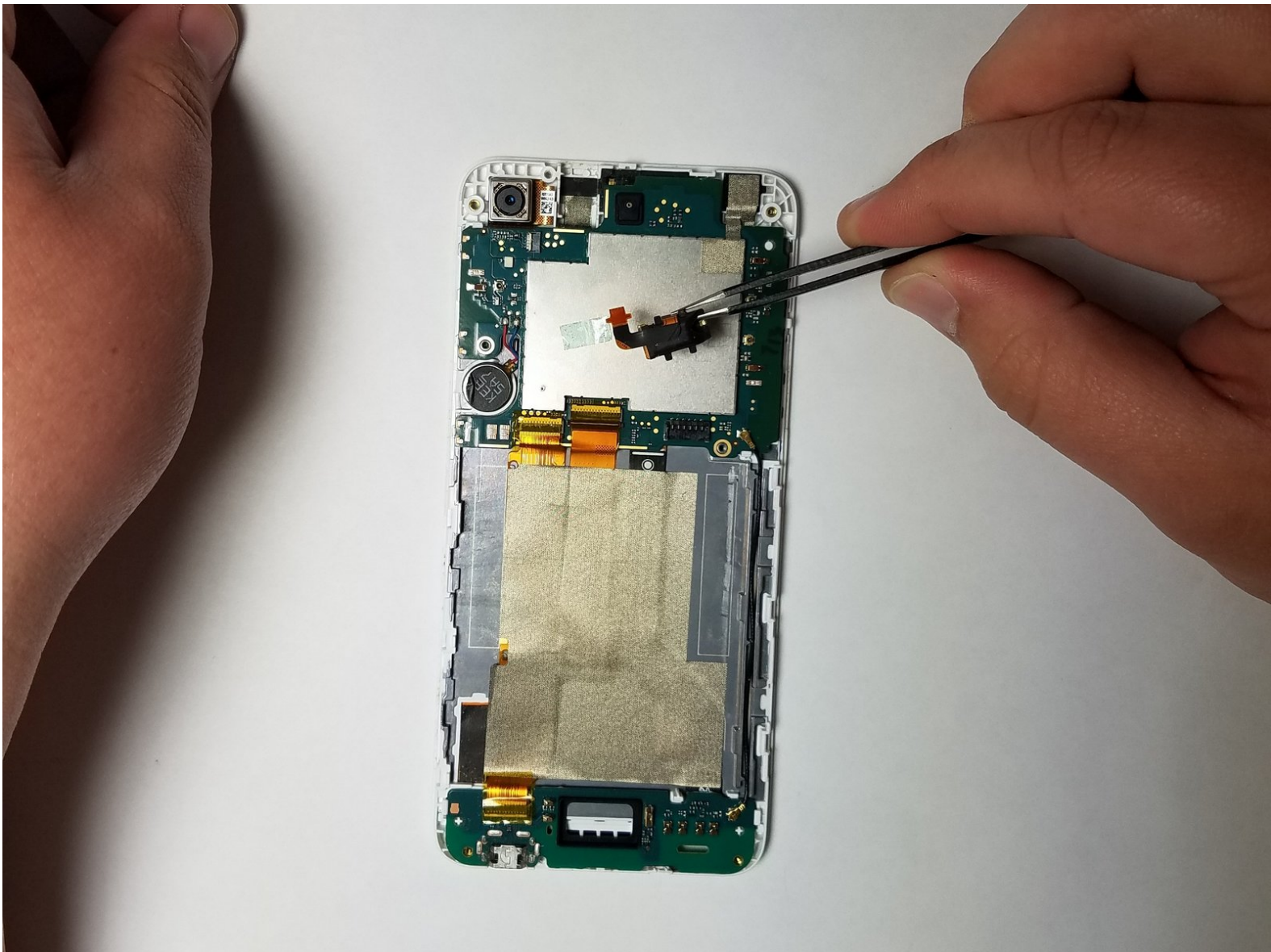




# HTC Desire 626s Auxiliary Port Replacement

Replacing the headphone jack (Auxiliary port) on a HTC Desire 626S smart phone.

Written By: Blake Bartlett



## INTRODUCTION

This is a device removal guide for your HTC Desire 626s auxiliary port (headphone jack) if ever in need of replacement.



### TOOLS:

- [T5 Torx Screwdriver](#) (1)
  - [JIS #000 Screwdriver](#) (1)
  - [iFixit Opening Tools](#) (1)
  - [Tweezers](#) (1)
-

## Step 1 — Backplate



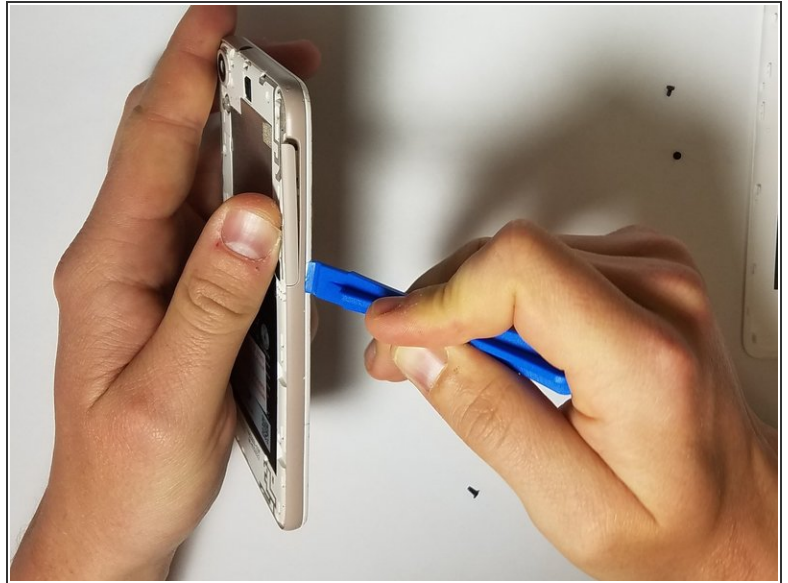
- Insert plastic opening tool in between the back cover and grey plastic.
- Gently work your way around the phone while sliding the tool.
- Gently pry on plastic cover as needed to release fasteners.

## Step 2



- There are 7 screws you need to remove before prying the secondary cover off. You will need to use the JIS #000 screwdriver and the T5 Torx screwdriver to remove these screws.
- There is a screw under the "void" sticker.

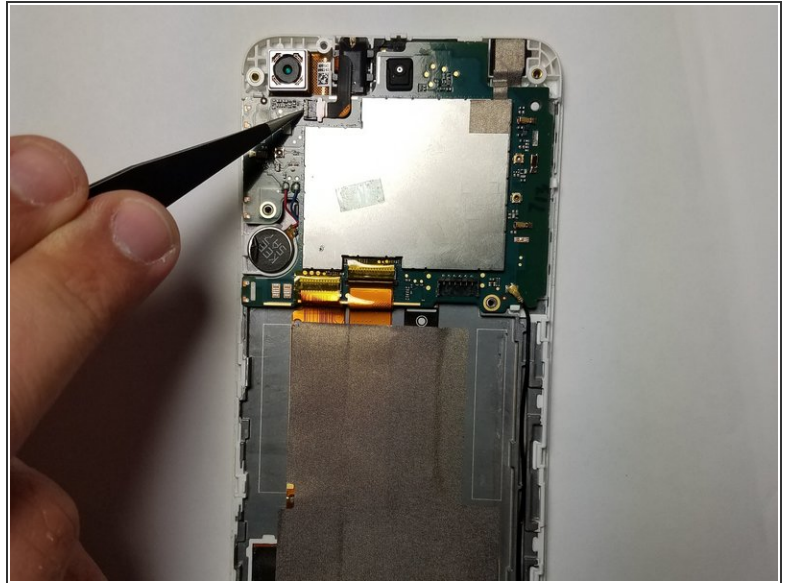
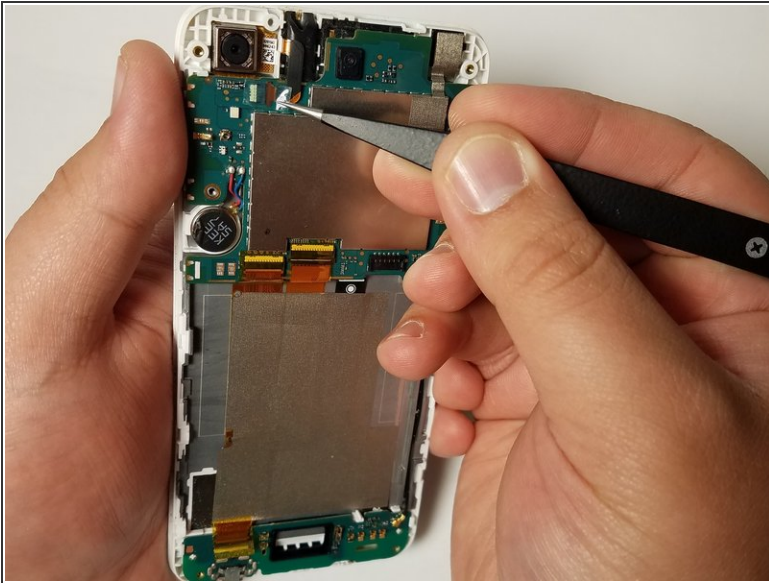
### Step 3



- Once the screws are removed, use the plastic opening tool to remove the remaining plastic cover.
- Start from the corners of the phone, and insert the plastic opening tool between the outer colored rim and the screen.
- This portion of the cover will be more difficult to remove than the initial back cover. Be patient and gentle around the button holes.

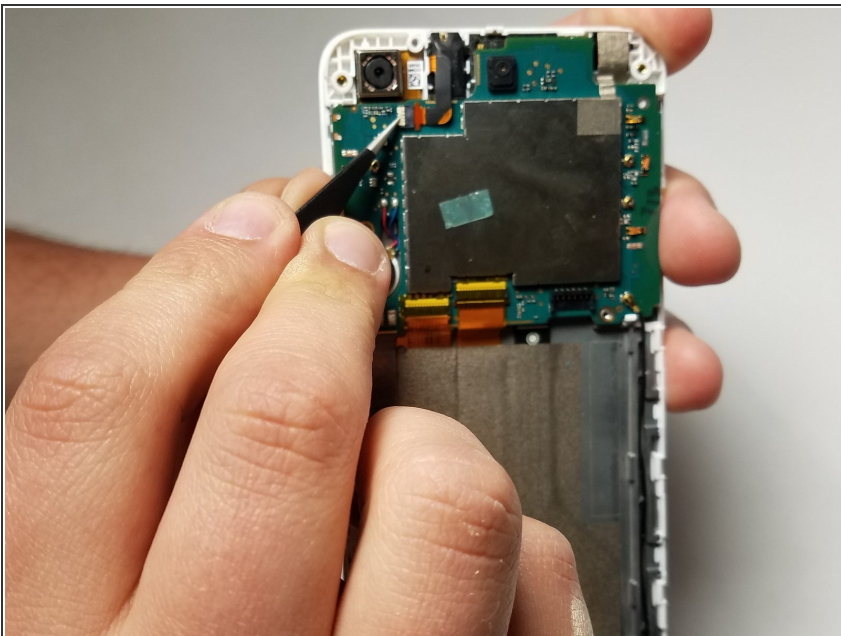


## Step 4 — Auxiliary Port (Headphone Jack)



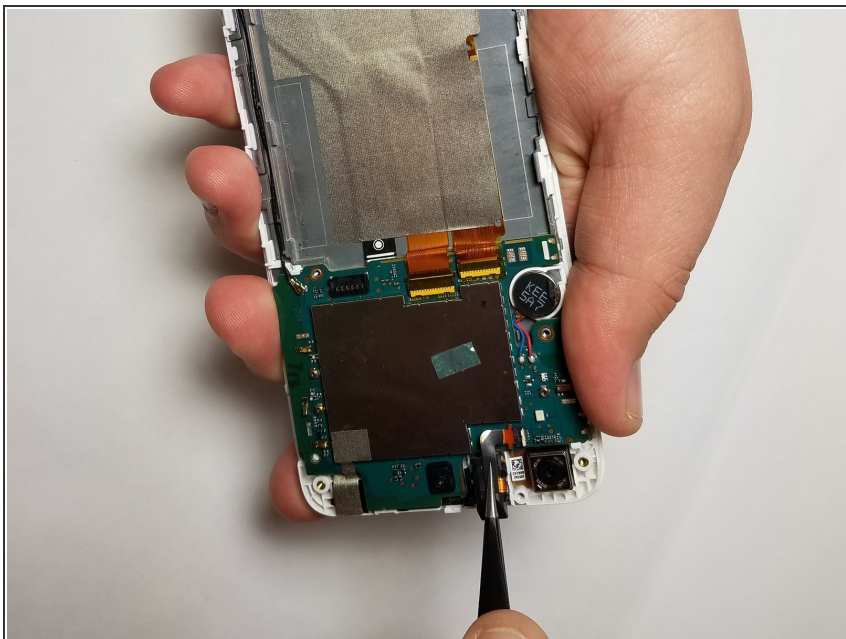
- Look for the clear piece of tape covering the wires connecting the aux port to the phone.
- Use the tweezers to remove this tape and stick it to the large metal plate on the phone for safe keeping.

## Step 5



- Find the white tab holding the wires from the previous step in place, and gently pry it up to a 90 degree angle. This will release the connection of the aux port to the phone's motherboard.

## Step 6



- Using the tweezers, grab the top of the aux port and gently wiggle it.
- It should come loose easily, but if it doesn't, make sure you've completed steps 1-2, then grabbing it from a different angle and continue wiggling until it comes loose.

To reassemble your device, follow these instructions in reverse order.