



HTC Desire 626s Camera Lens Replacement

Replacing HTC Desire 626s camera lens. 2015 model

Written By: Blake Bartlett



INTRODUCTION

These are the instructions on how to remove and replace a broken or malfunctioning camera lens from a HTC Desire 626s smart phone. Once you remove the top layer of the back plate (step 1), you can skip straight to the lens replacement portion of this guide.



TOOLS:

- [iFixit Opening Tools](#) (1)
 - [T5 Torx Screwdriver](#) (1)
 - [JIS #000 Screwdriver](#) (1)
 - [Tweezers](#) (1)
-

Step 1 — Backplate



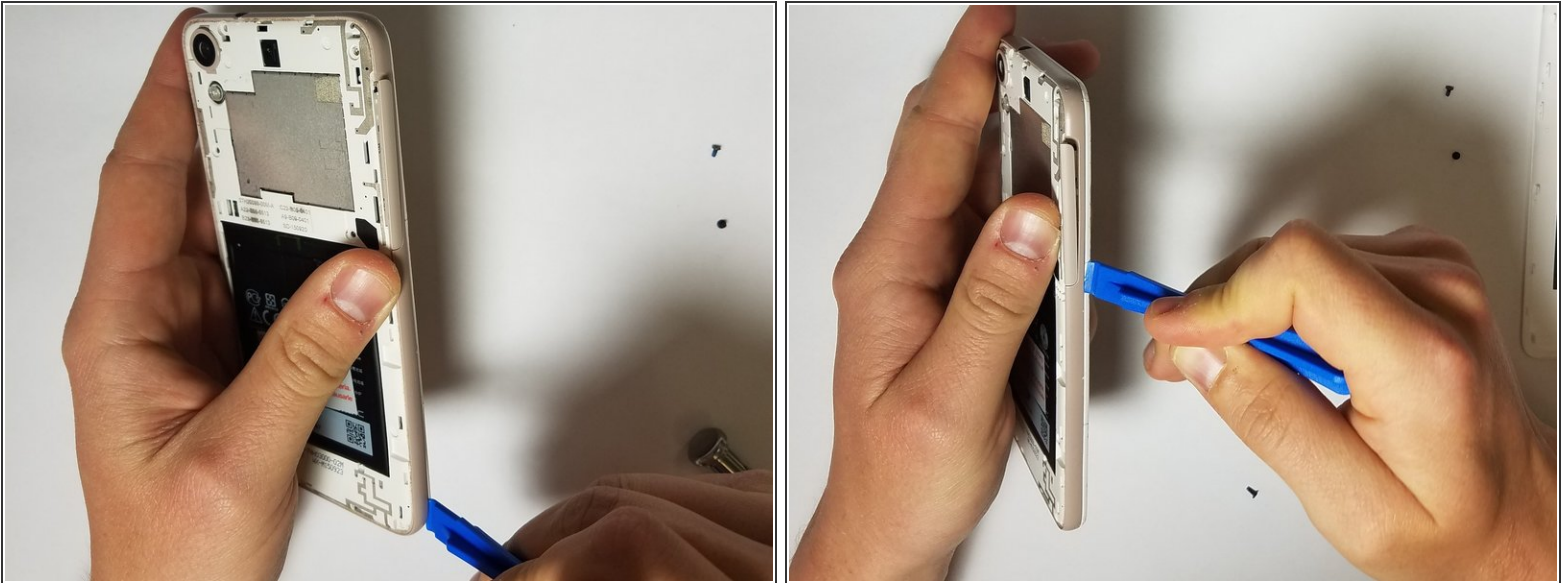
- Insert plastic opening tool in between the back cover and grey plastic.
- Gently work your way around the phone while sliding the tool.
- Gently pry on plastic cover as needed to release fasteners.

Step 2



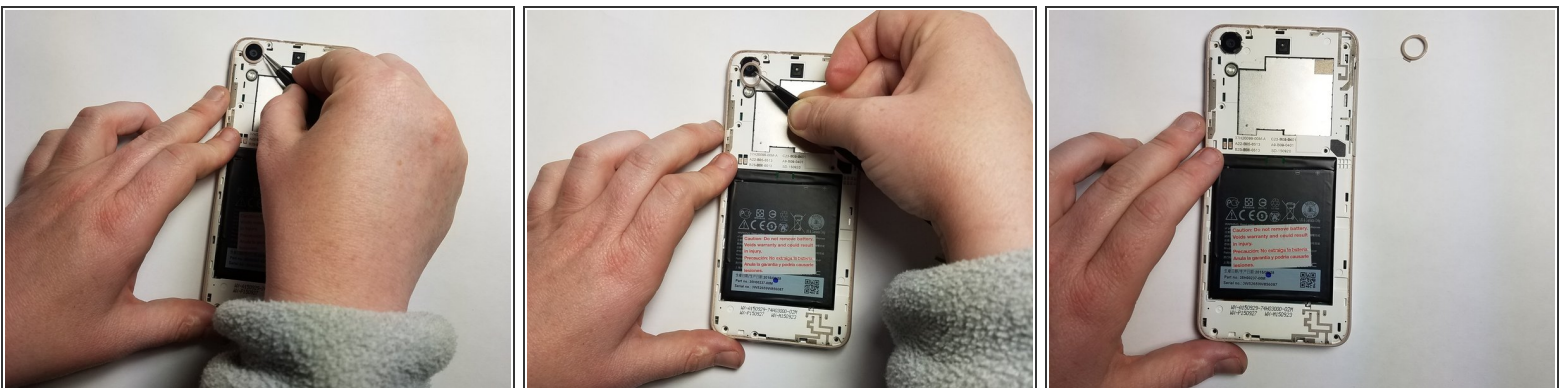
- There are 7 screws you need to remove before prying the secondary cover off. You will need to use the JIS #000 screwdriver and the T5 Torx screwdriver to remove these screws.
- There is a screw under the "void" sticker.

Step 3



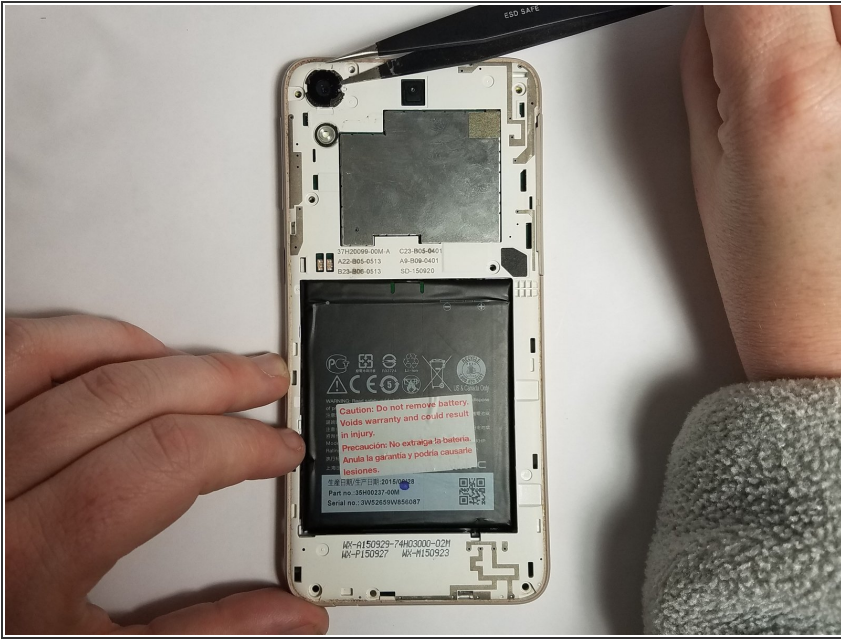
- Once the screws are removed, use the plastic opening tool to remove the remaining plastic cover.
- Start from the corners of the phone, and insert the plastic opening tool between the outer colored rim and the screen.
- This portion of the cover will be more difficult to remove than the initial back cover. Be patient and gentle around the button holes.

Step 4 — Camera Lens



- Use tweezers to remove the outer colored cover of the lens.
- Just work one end of the tweezers under the edge of the cover and gently pry it off.

Step 5



- Use one end of the tweezers to slip underneath one of the edges of the lens.
- If the lens is already cracked you don't need to worry about being gentle with it, because the intention is to replace it.

Step 6



- There is adhesive holding the lens in place. Try not to scrape this up too bad because it will be used to hold the replacement lens in place.
- Congrats you're done!

To reassemble your device, follow these instructions in reverse order.