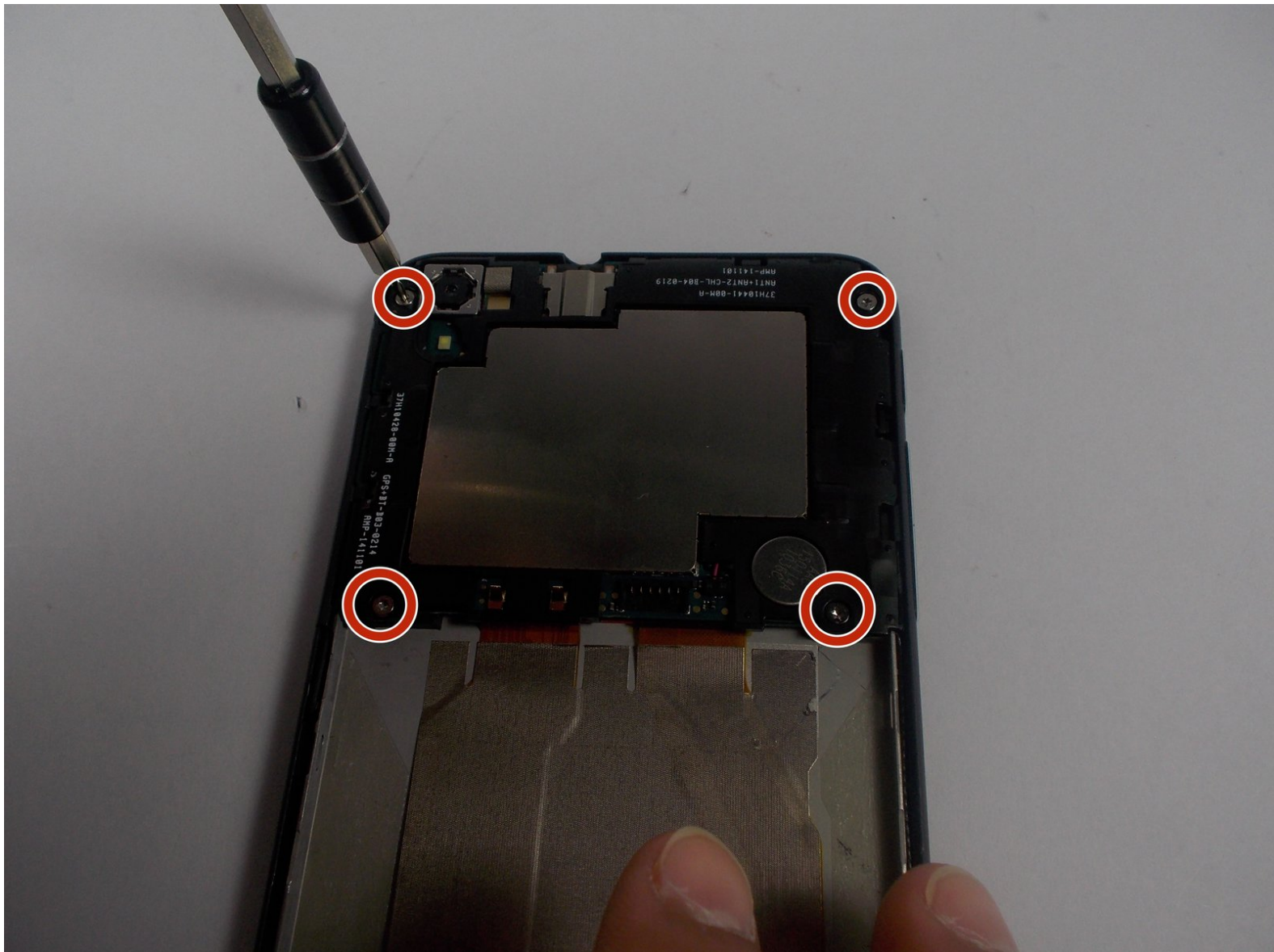




HTC Desire 816 Front Facing Camera Replacement

Replacing the camera for better picture quality.

Written By: Saleena Douangphachanh



INTRODUCTION

Capturing images is how people retain visible proof of memories being created. This guides purpose is to help the user replace a major key component in a cellular device that gives users the ability to see themselves.



TOOLS:

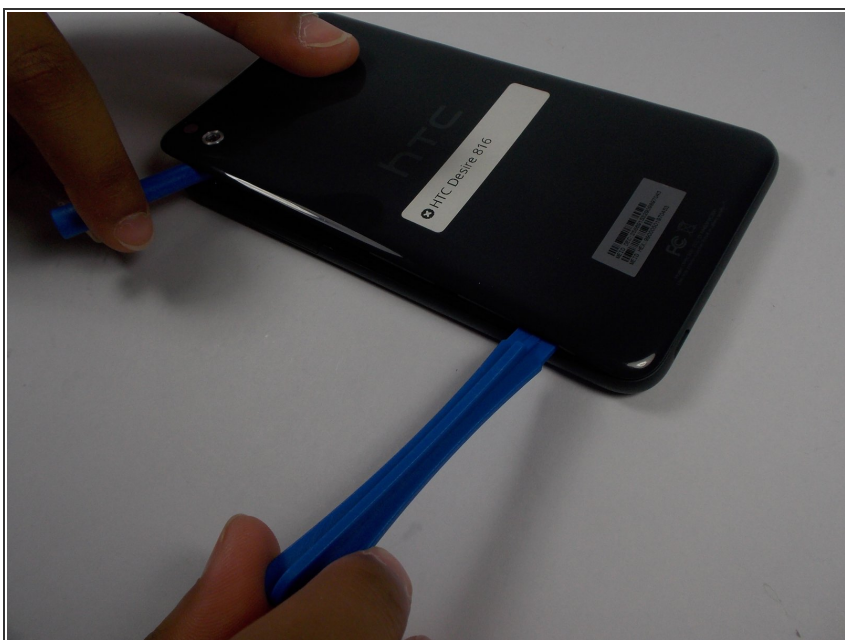
- [iFixit Opening Tools](#) (1)
 - [Spudger](#) (1)
 - [Phillips #000 Screwdriver](#) (1)
 - [Tweezers](#) (1)
-

Step 1 — Battery



- Pry open the back panel by inserting the plastic opening tool on the left of the camera. We find this spot the easiest to get the tool under the panel.

Step 2




- Once you get an open spot, with a second plastic opening tool, slide down to the bottom of the phone to free the rest of side.

Step 3



- There is adhesive between the battery and the back panel. Take a nylon spudger to cut through the adhesive.

 Be sure to use the correct tool for the job. Metal spudgers can puncture an unprotected battery, potentially causing a fire.

Step 4



- Once all way around the bottom, the panel should be broken free of the adhesive, and the rest of the panel should pop right off.

Step 5



- Insert a nylon spudger at the bottom of the battery and lift up to remove the battery.

⚠ Be sure to use the correct tool for the job. Metal spudgers can puncture an unprotected battery, potentially causing a fire.

Step 6



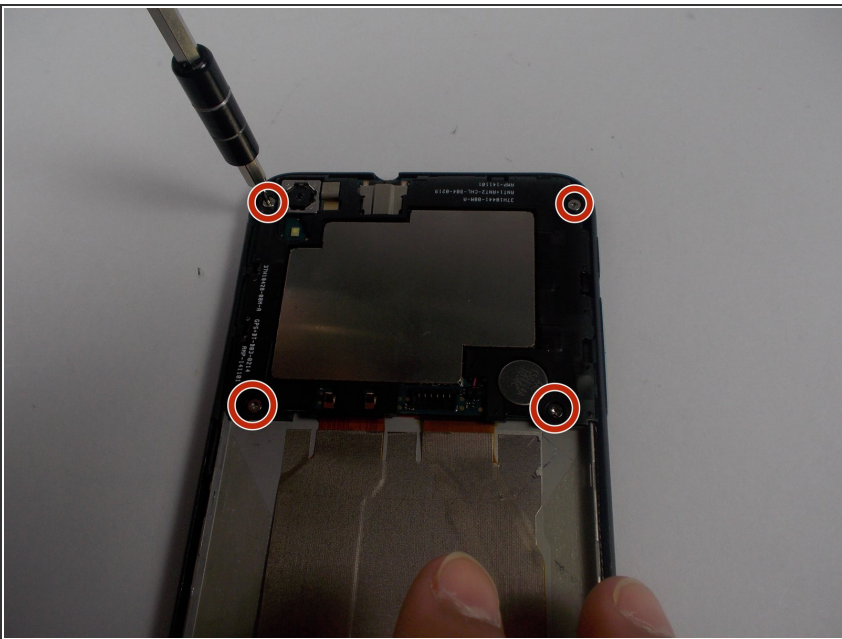
- There is adhesive on the other side of the battery as well, take the nylon spudger used to get off the panel and cut through.

Step 7



- Carefully lift battery backside first to disconnect the white connector.

Step 8 — Front Facing Camera



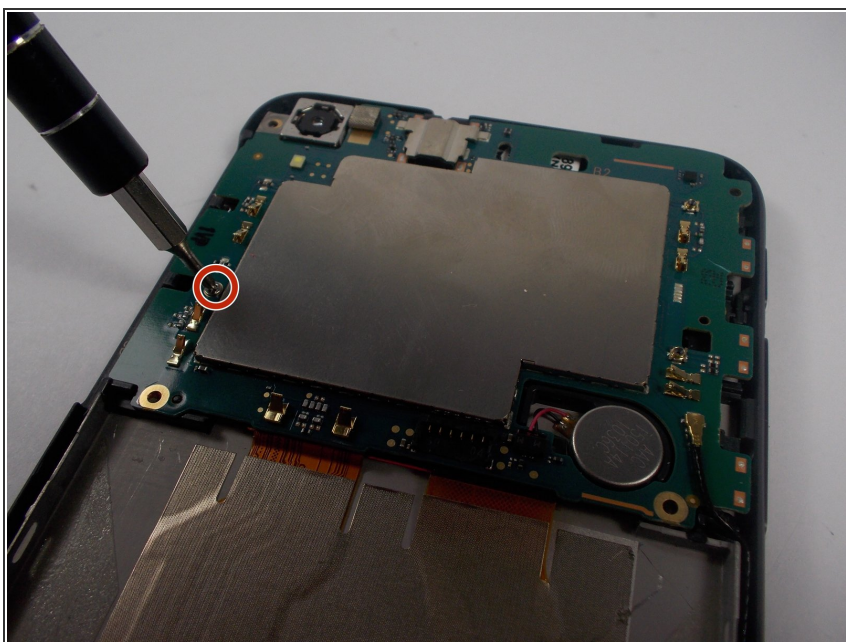
- Using the T5 screwdriver, unscrew these four screws in order to remove the plastic casing.

Step 9



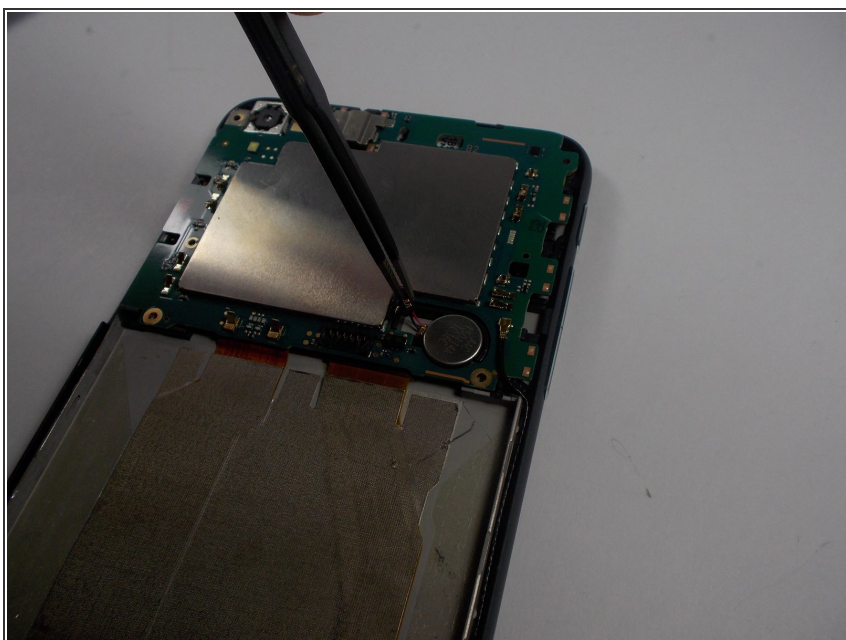
- Remove the black plastic casing with a plastic opening tool.

Step 10



- Using the PH000 screw driver head, unscrew the one screw that is holding down the mother board. (This screw is located on the left side of the motherboard.)

Step 11



- Using a pair of tweezers, gently disconnect the battery wire from the motherboard.

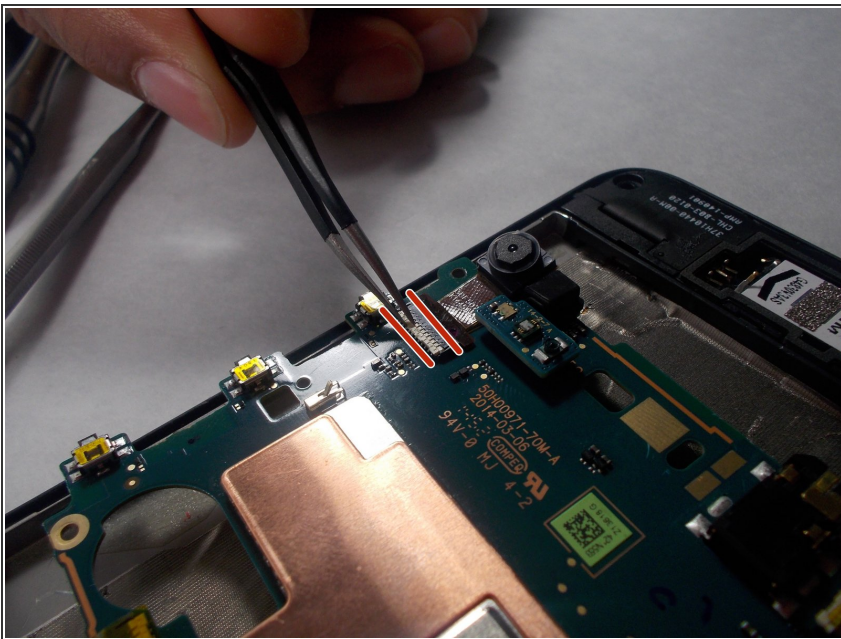
Step 12



- Lift the motherboard and peel it back.

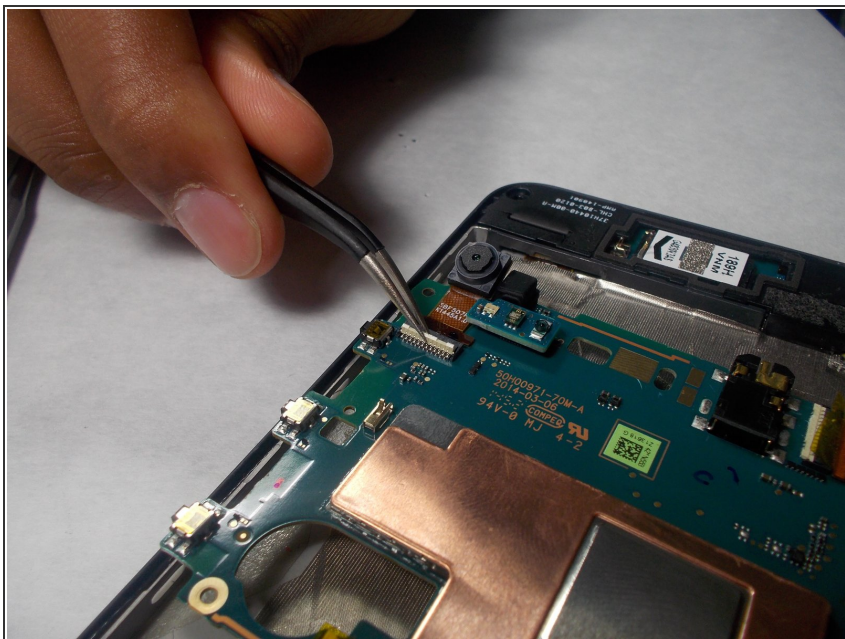
⚠ Do not disconnect the motherboard from the device.

Step 13



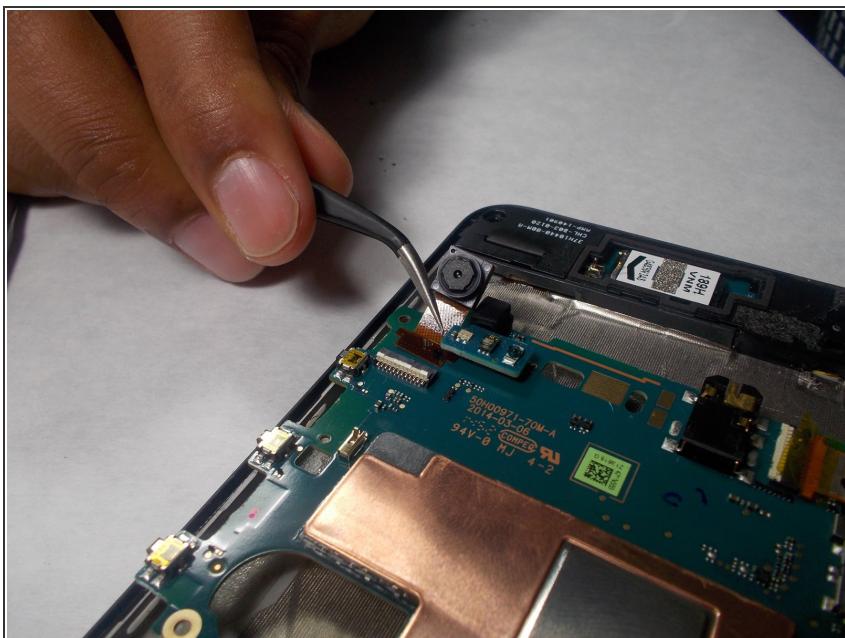
- Locate the camera and its connector.

Step 14



- Using a pair of tweezers, lift the white part of the connector and disconnect the camera from the motherboard.

Step 15



- Use a pair of tweezers to slide the camera out and remove the camera from the device.

To reassemble your device, follow these instructions in reverse order.