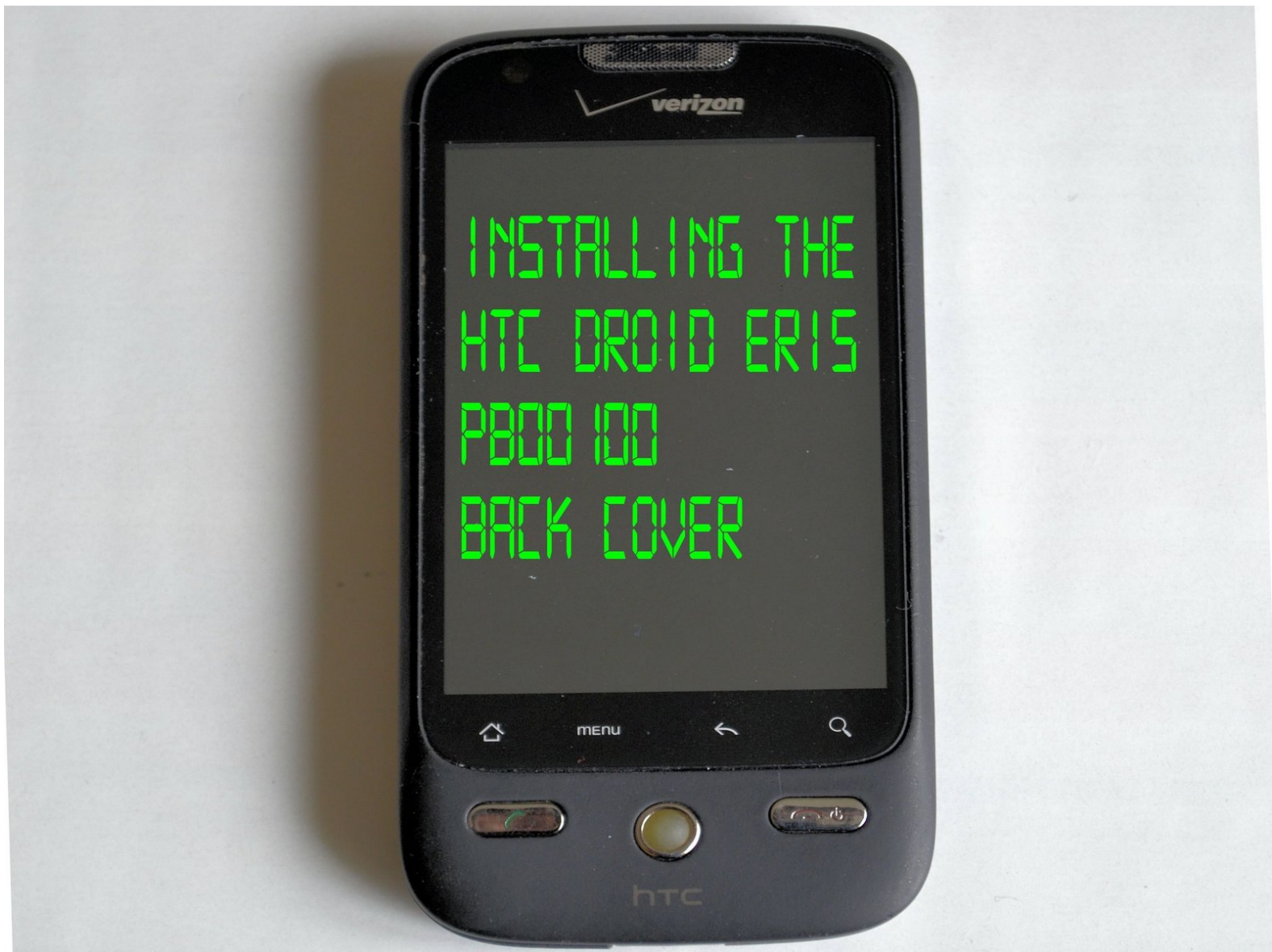




# HTC Droid Eris Midframe Replacement

Use this guide to replace the HTC Droid Eris midframe.

Written By: Elizabeth Ofori



---

# INTRODUCTION

This guide will teach you how to replace/install the midframe.



## TOOLS:

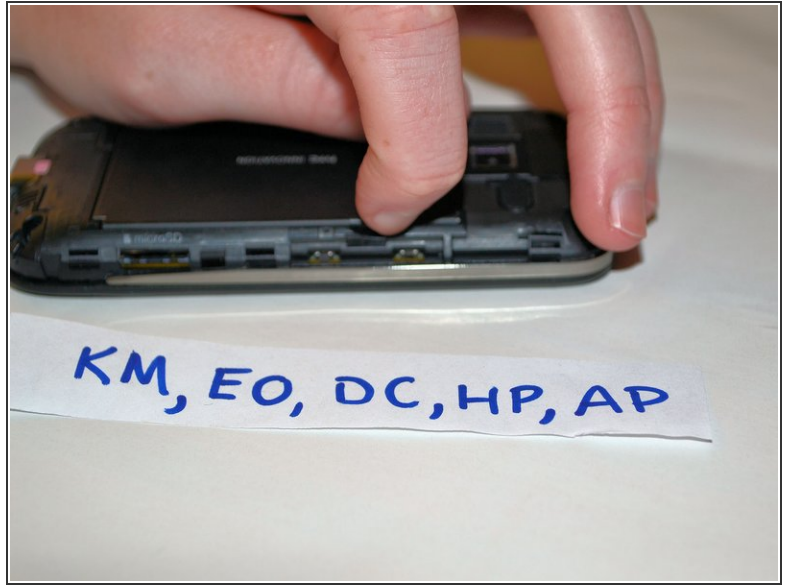
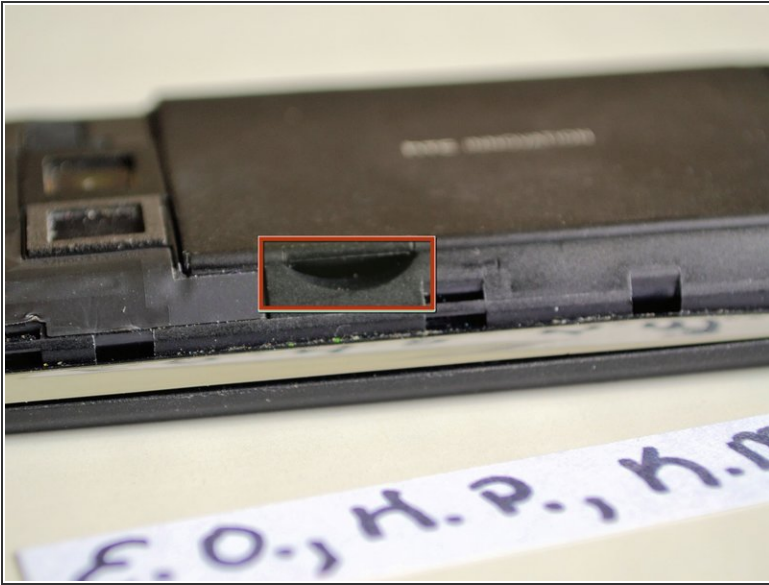
- [iFixit Opening Tools](#) (1)
  - [T4 Torx Screwdriver](#) (1)
  - [Tweezers](#) (1)
  - [Phillips #00 Screwdriver](#) (1)
-

## Step 1 — Battery



- Place the device on a flat surface (with the headphone outlet facing you). Using one of your fingers, place the tip of your finger over the highlighted spot (as shown in the second picture). Next, pull the back cover upwards.
- If the first method is too difficult, use the plastic opening tool in order to complete this step. Stick the plastic opening tool inside of the gap. (The gap is located on the top of the device which is highlighted in the second photo). Using the plastic opening tool pull the back cover upwards until the back cover pops off.

## Step 2



- Lay the device on a flat surface with the screen facing downward. Use one hand to hold the device down in place. With your free hand use one of your fingers and stick it in the gap (as highlighted in the photo) and pull it up towards you.
- The gap is located on the left side of the device in the upper left hand corner and the on the right side of the device in the upper right hand corner.
- If the battery is not coming out with this technique, use the plastic opening tool to stick it in the gap and pry it up towards you.
- The battery will pop out.

## Step 3 — Midframe



- At the lower right hand corner of the phone (as highlighted in the picture as shown) use one hand to hold the device in place and use your finger (on your free hand) to push the micro SD card inwards until you hear a "click" sound and it pops out.
- If that method is difficult, use the plastic opening tool to push the micro SD card inwards and it will make a "click" sound and pop out.



## Step 4



- Use the T-4 screwdriver to remove the three .050 mm screws from the back cover.
- ⓘ *Place the screws in a safe place. The screws are extremely small and easy to lose. You will need to use the screws in order to put the device back together again.*

## Step 5



- Use the plastic opening tool and place it in the gap by the chrome bezels which are located on both sides of the device. Pull the plastic opening tool downward so that the plastic case will pry open. Start prying open the device and work clockwise.
- ⚠ **DON'T BREAK THE CLIPS** (you can damage the frame this way). Pry it gently until you hear it click and start to see it open.
- ℹ "After the clips are disengaged, there are no cables holding the back panel in its place, you should be able to pull the midframe out easily.."

To reassemble your device, follow these instructions in reverse order.