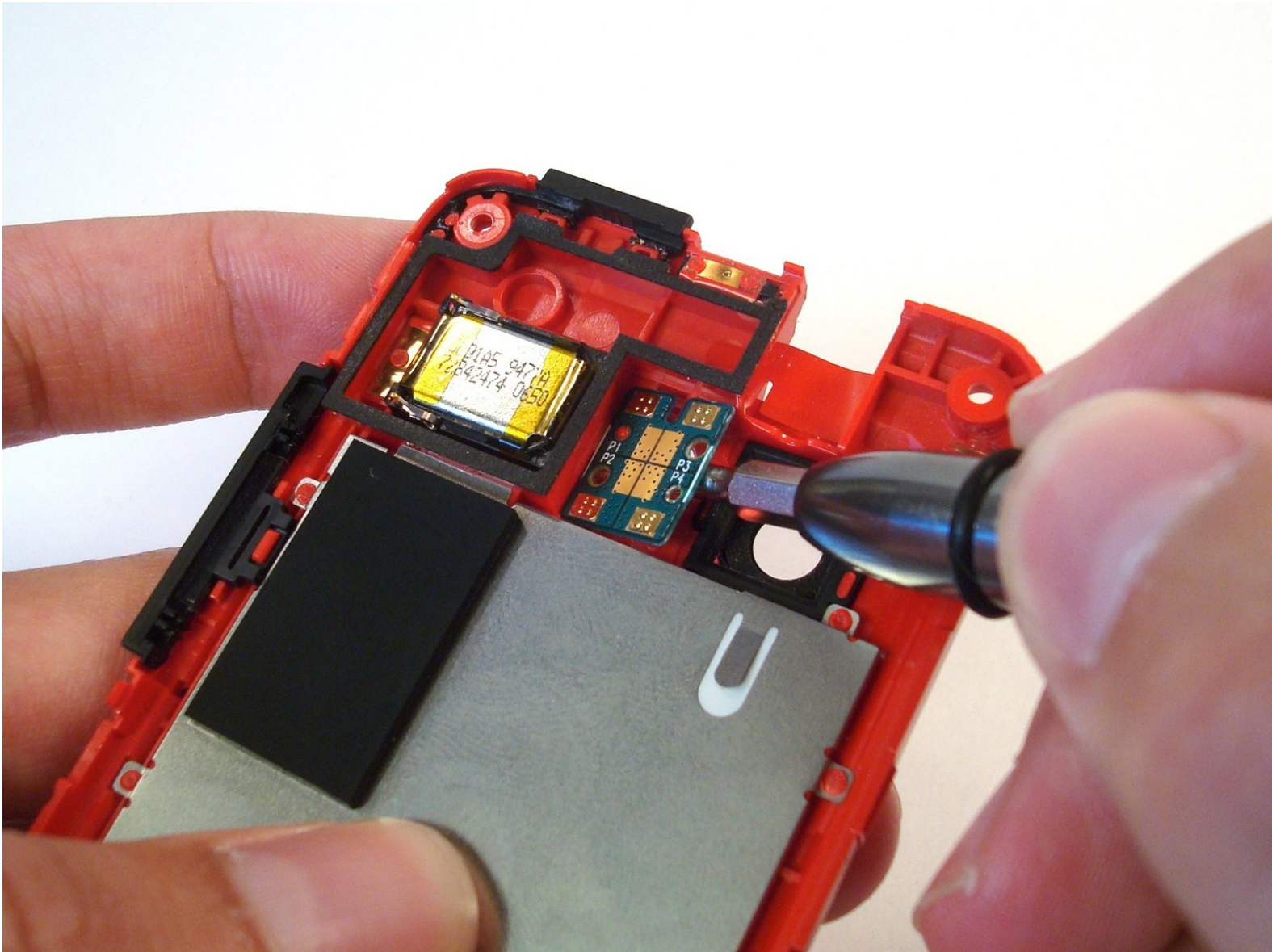




HTC Droid Incredible Dual LED Flash Replacement

Dual LED flash replacement.

Written By: Andrew Optimus Goldheart



INTRODUCTION

Use this guide to replace the Dual LED Flash in your Droid Incredible.



TOOLS:

- [Phillips #000 Screwdriver](#) (1)
 - [Flathead 3/32" or 2.5 mm Screwdriver](#) (1)
 - [Spudger](#) (1)
 - [T6 Torx Screwdriver](#) (1)
-

Step 1 — Battery



- Press your thumbnail into the slot between the rear panel and the front case located in the bottom of the phone.
 - ① Useful tip: a penny or dime works in a pinch if you can't use your thumbnail.
- Gently pry the rear panel up and away from the phone. You may need to slide your thumb up the crack to separate the rear panel from the front case.

Step 2



- Remove the rear panel from the phone.

Step 3



- Insert a fingertip into the gap between the battery and the rear inner frame, located between the battery and the speaker. Slide the battery away from the speaker, widening the gap.
- Lift the top of the battery up and remove the battery from the rear inner frame.

Step 4 — MicroSD card



- Press the MicroSD card further into its slot until it clicks.
- Release the MicroSD card, and it will pop out slightly.

Step 5



- Pull the MicroSD card straight out of its slot.

Step 6 — Rear Inner Frame



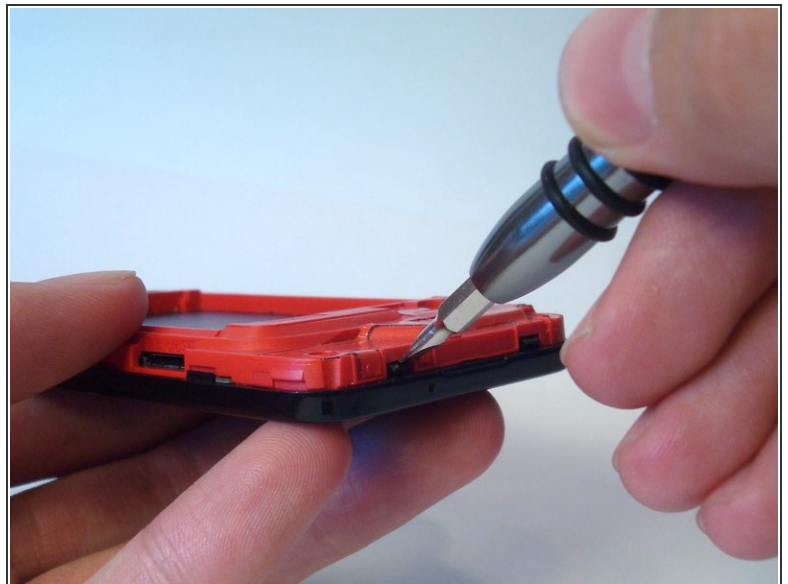
- Remove four T6 Torx screws securing the rear inner frame to the front case.

Step 7



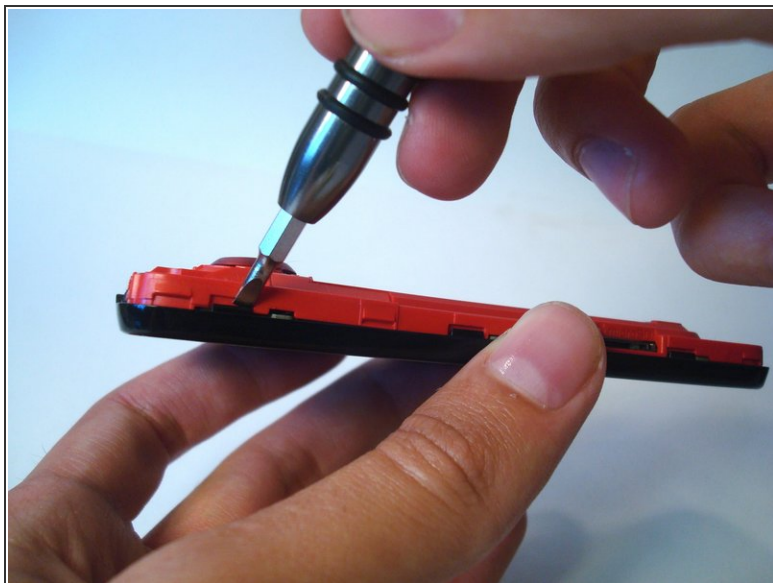
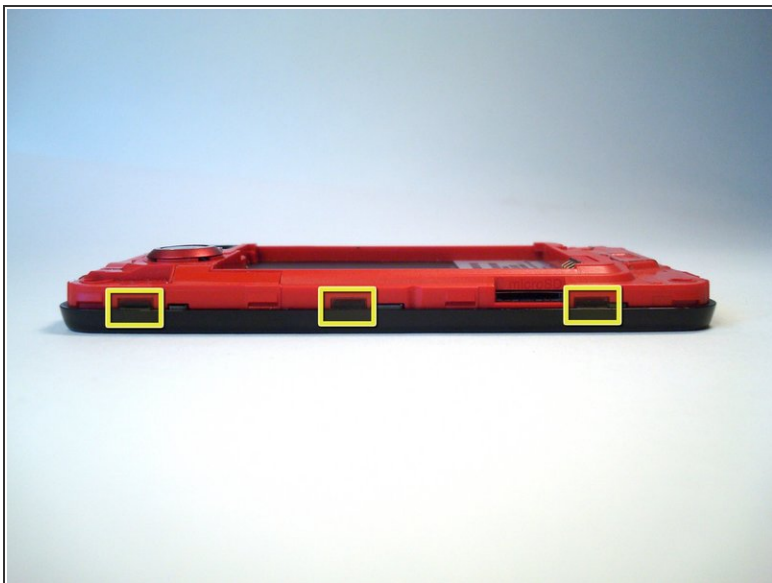
- The rear inner frame is attached to the front case by nine plastic clips, marked here for reference.

Step 8



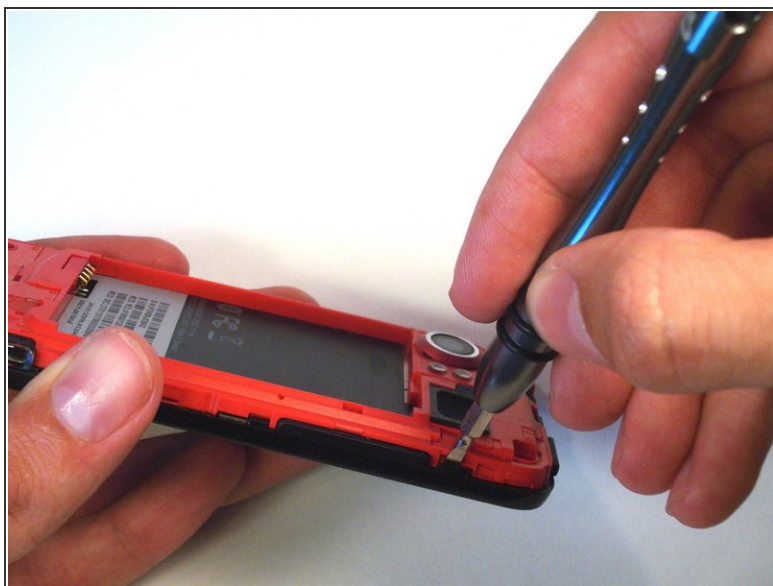
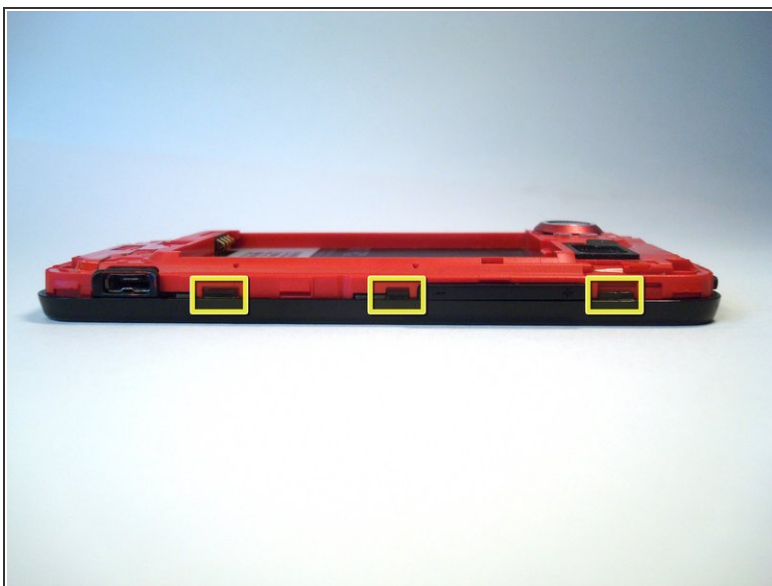
- Starting on the bottom of the phone, gently push in on the (red) rear inner frame behind each black clip with a small flathead screwdriver.
- Go slow and be gentle, you may have to go back and forth between each side several times to work the rear inner case free.

Step 9



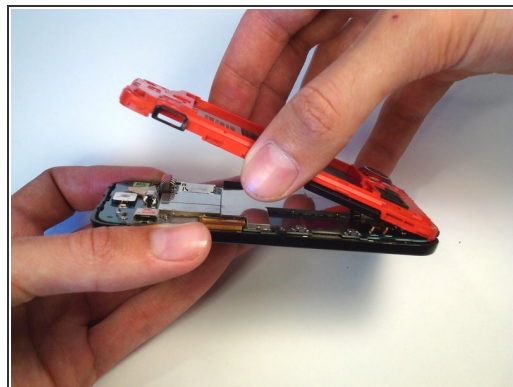
- Loosen the clips on the side next to the camera using the method described in the previous step.

Step 10



- Rotate the phone 180 degrees and loosen the three clips on the side by the speaker. Note that the middle clip on this side is smaller than the others.

Step 11



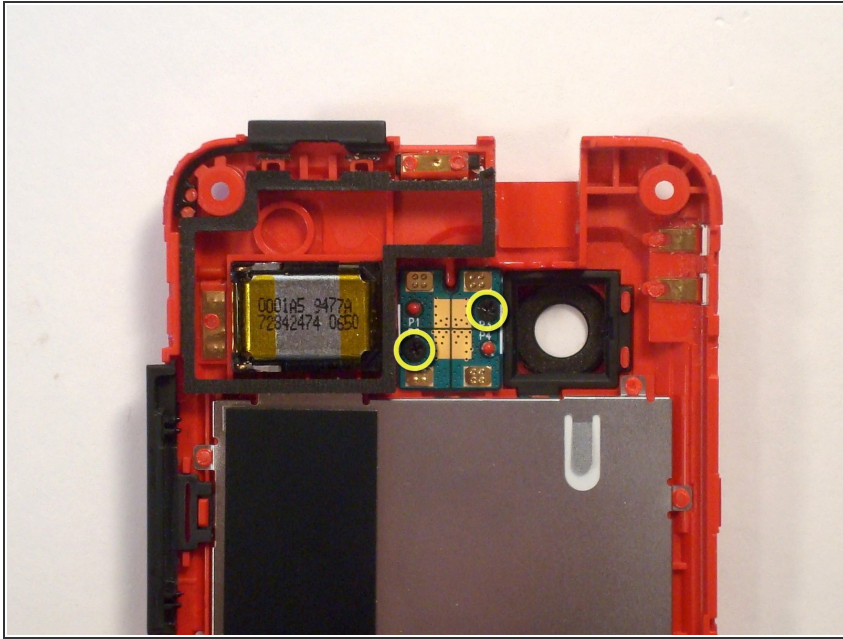
- Use the same technique to loosen the clip on the top of the phone.
- You may need to gently lift the bottom of the rear inner frame to free this clip.

Step 12



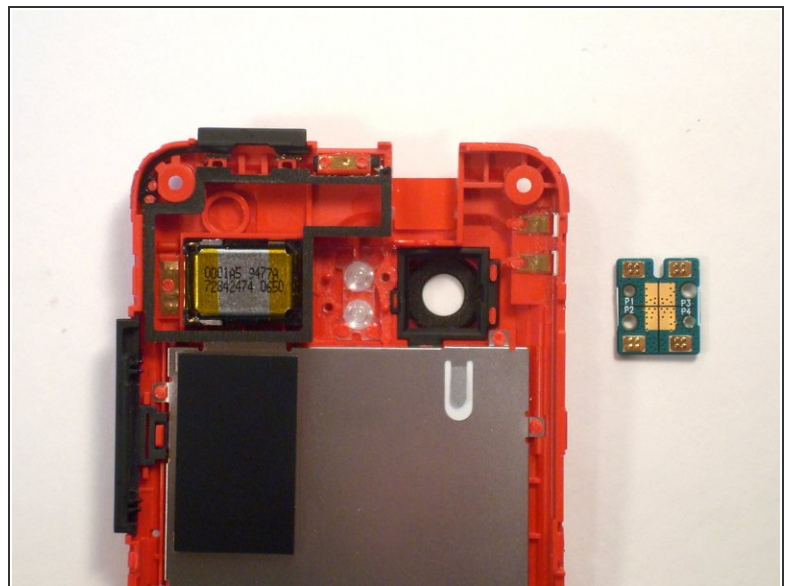
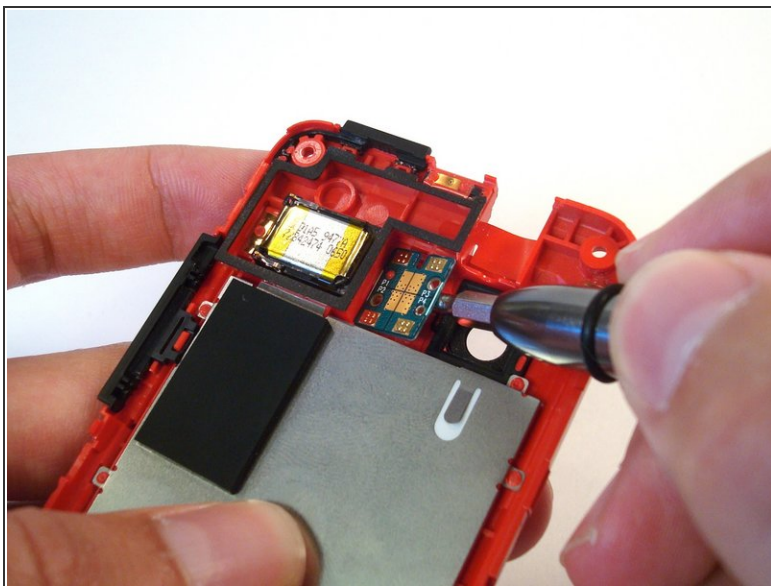
- Remove the rear inner frame.

Step 13 — Dual LED Flash



- Remove two #000 Phillips screws attaching the Dual LED Flash board to the Rear Inner Frame.

Step 14



- Use a small flathead screwdriver to gently pry the dual LED flash board off the posts holding it to the rear inner frame.
- Remove the dual LED flash board from the rear inner frame.

To reassemble your device, follow these instructions in reverse order.