



# HTC HD2 Screen Replacement

This will help you get to the screen, if you're feeling brave.

Written By: Nathan Puchalski



## INTRODUCTION

The actual screen cannot be detached from the front cover, so if its the cover that is broken, an entire new module will be needed. This will basically be a complete tear down of the phone, as most pieces will be removed to reach the screen.



### TOOLS:

- [Heat Gun](#) (1)
- [Spudger](#) (1)
- [T5 Torx Screwdriver](#) (1)
- [Tweezers](#) (1)



### PARTS:

- [HTC HD2 \(PB81120\) Front Panel](#) (1)

## Step 1 — Battery



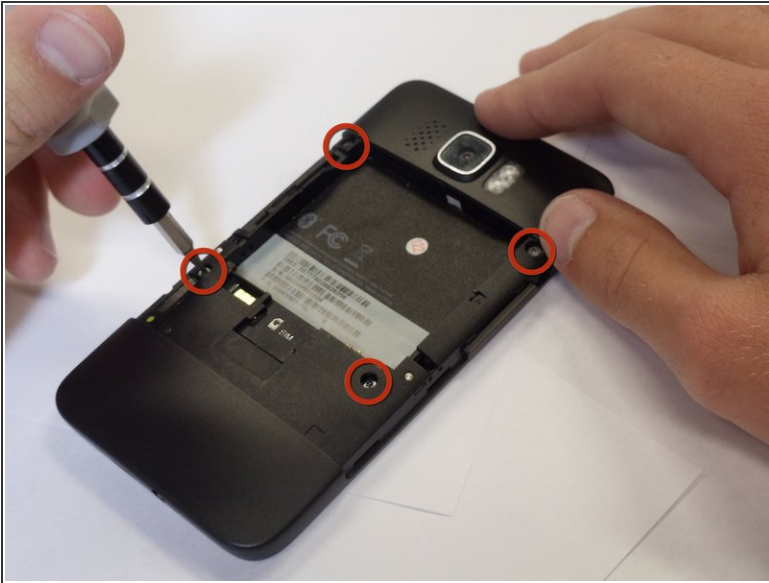
- Carefully pull the rear cover from the back of the phone.
- Place a finger beneath the small lip on the left side of the battery.

## Step 2



- Lay the phone down on it's screen.
- Lift up on the lip and pull the battery from the phone.

## Step 3 — Midframe



- Remove the four black 3.5mm T5 screws from the back of the phone.

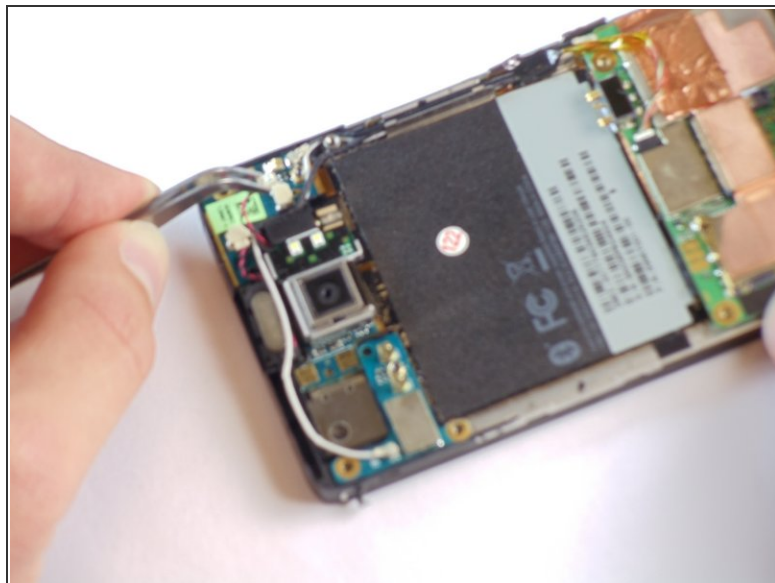
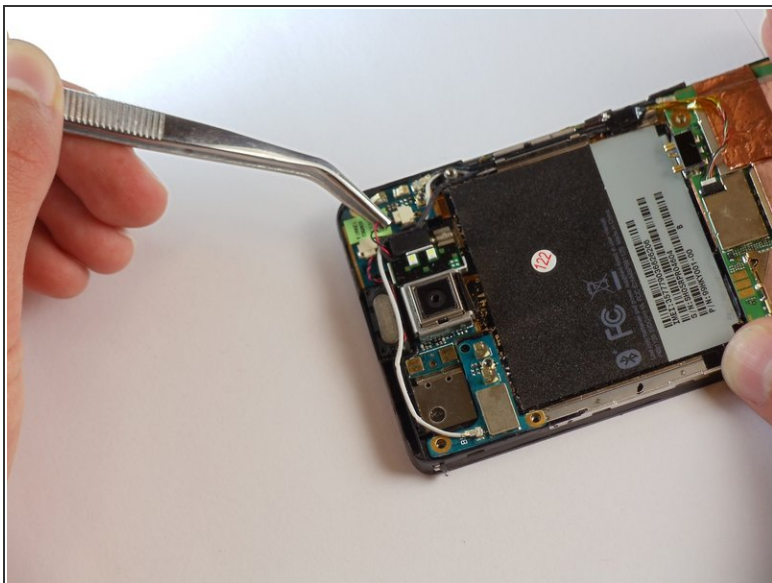


## Step 4



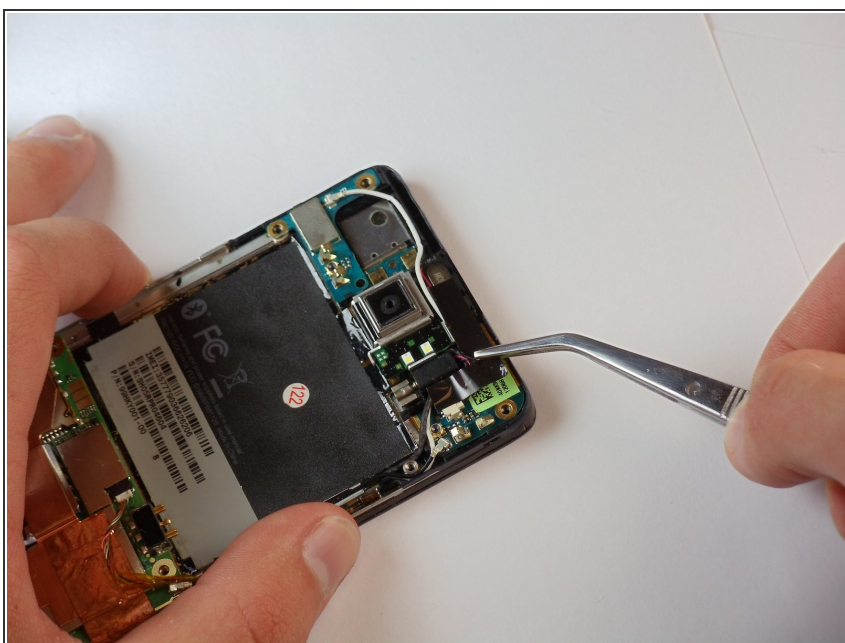
- Insert the flat end of a spudger between the midframe and the display.
- Slide the spudger along the seam between the frame and the display.
- Using the spudger for leverage, carefully pry the midframe away from the display assembly.
  - ⓘ This process will take some effort. Continue to pry slowly and carefully until the frame begins to detach.
- As it releases, pull the midframe away from the phone.
- ⓘ The volume control tab may fall off during removal. It can be easily reattached.

## Step 5 — Vibrator



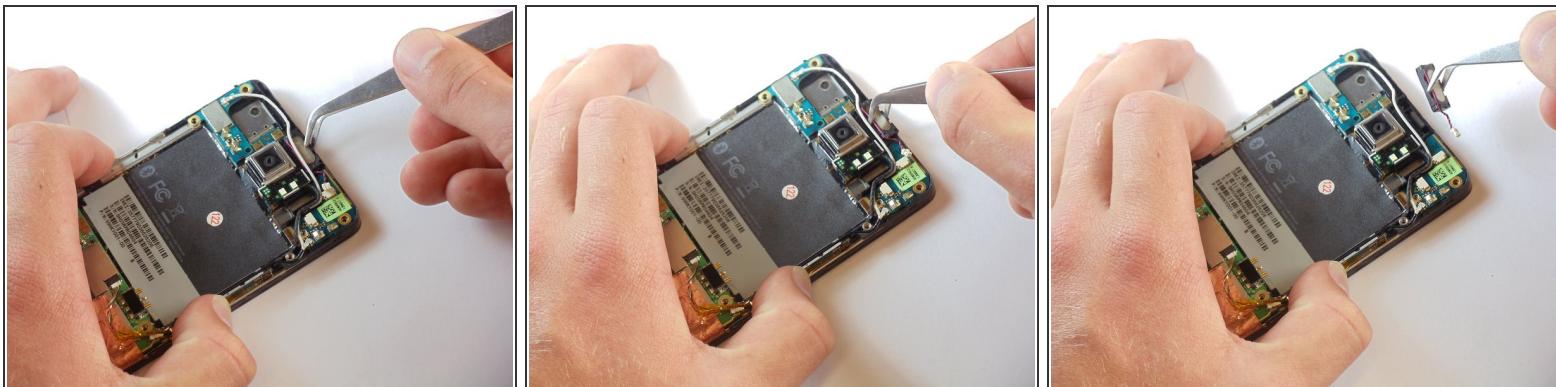
- Set the phone down on its screen.
- Using tweezers, unplug the small vibrator connector from its socket on the motherboard.

## Step 6



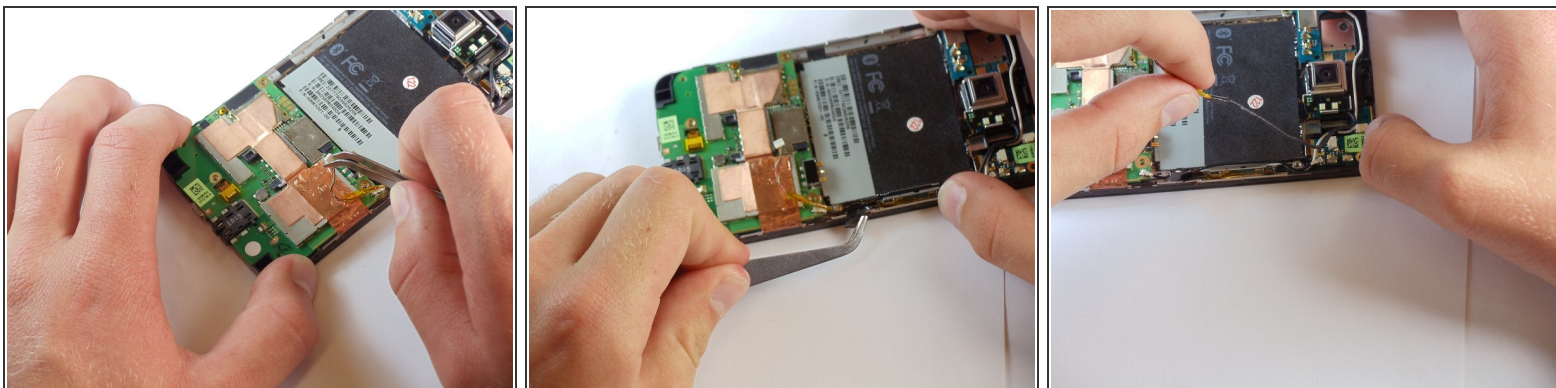
- Pull the vibrator motor from the phone.

## Step 7 — Earpiece Speaker



- Disconnect the small speaker cable from its socket on the motherboard.
- Remove the earpiece speaker from the phone.

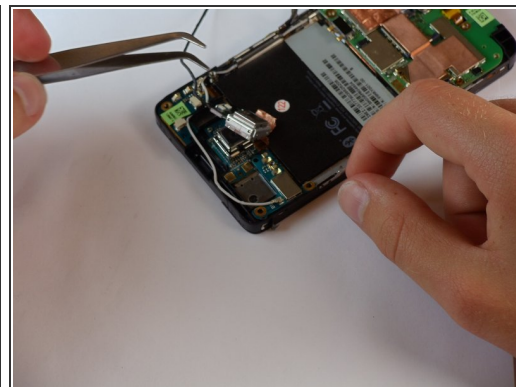
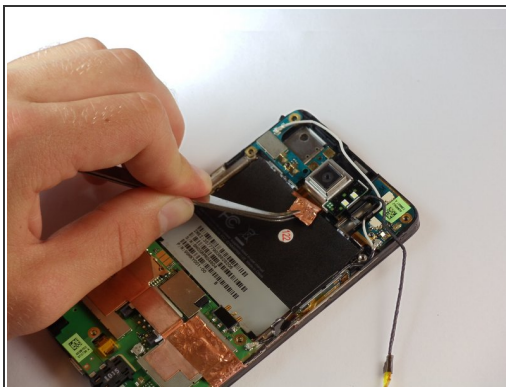
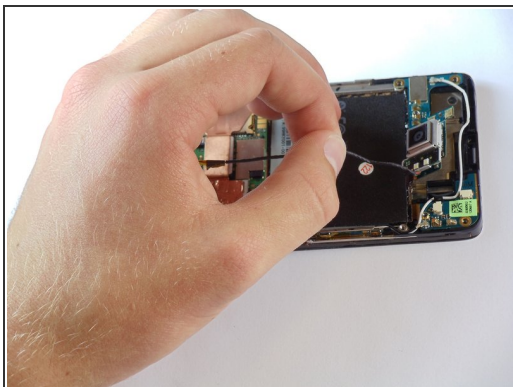
## Step 8 — Camera



- Disconnect the flash cable from its socket in the bottom of the motherboard.
- Carefully pull the cable from its groove in the frame, working your way back to the camera.

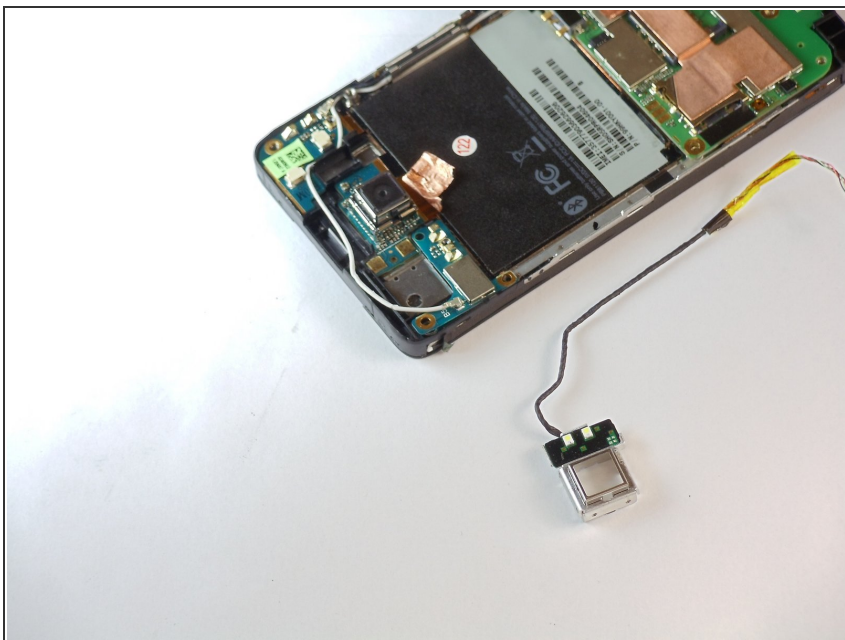


## Step 9



- Pull the camera flash and cover off of the board.
- ① You may need to peel back the sticker that sits behind the battery.
- ⚠ Work carefully. Excessive force can damage the camera or motherboard.

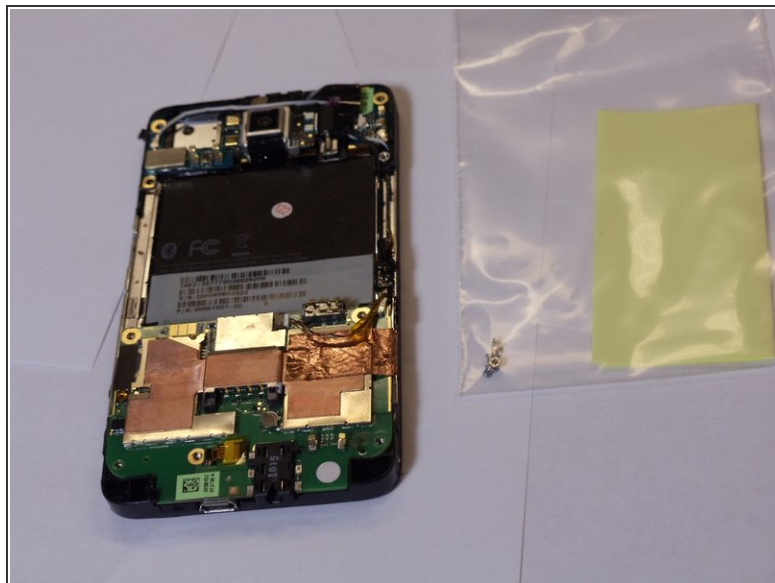
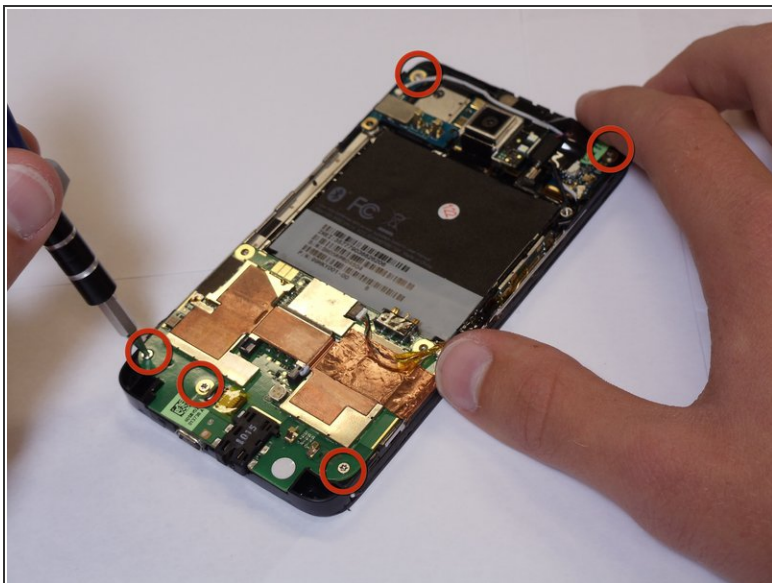
## Step 10



- Around the camera is a thin shielding. Remove it with tweezers.
- Using tweezers, remove the primary camera.

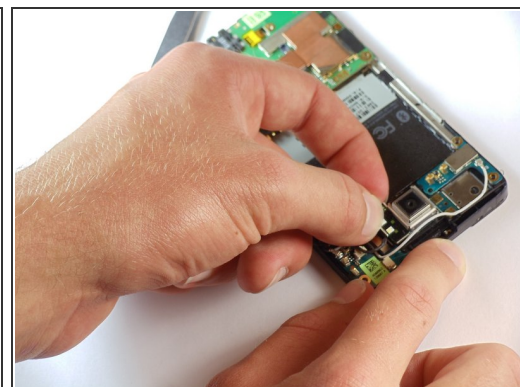
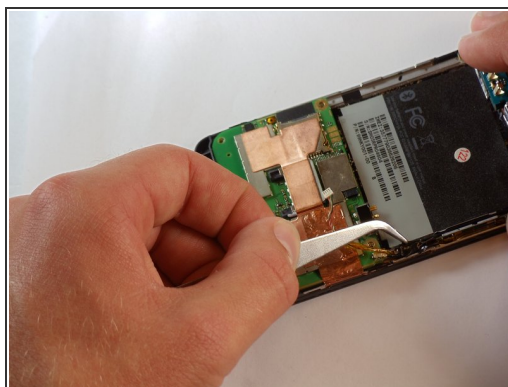
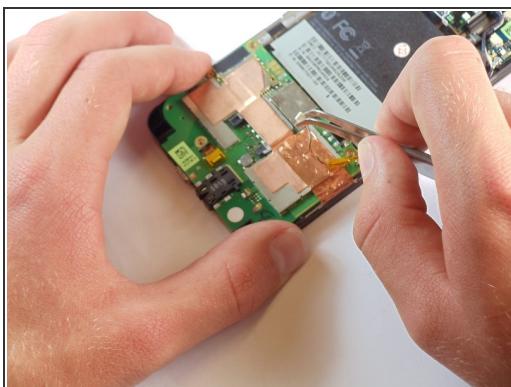


## Step 11 — Motherboard



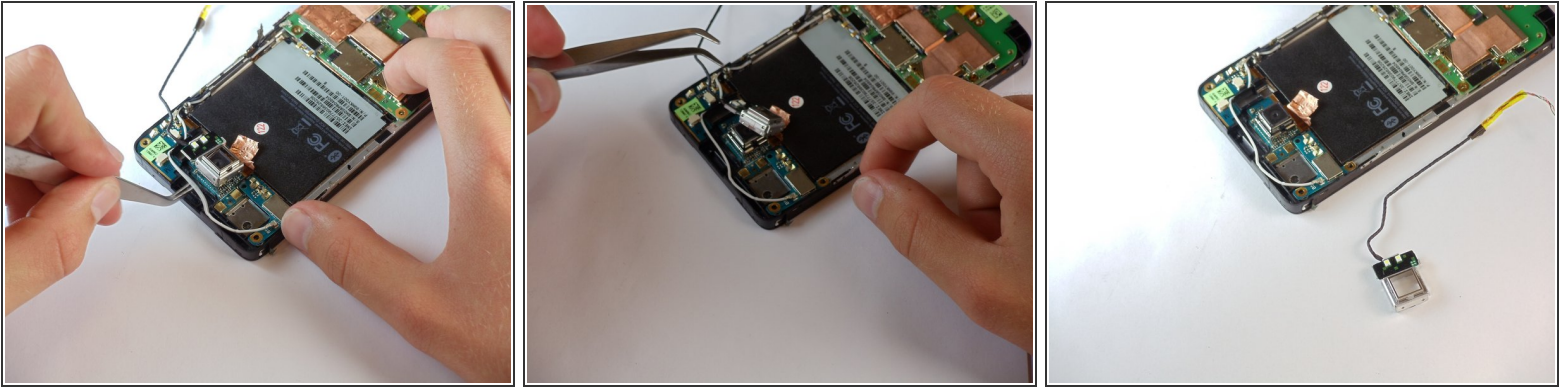
- Remove five T5 Torx screws from the motherboard.

## Step 12



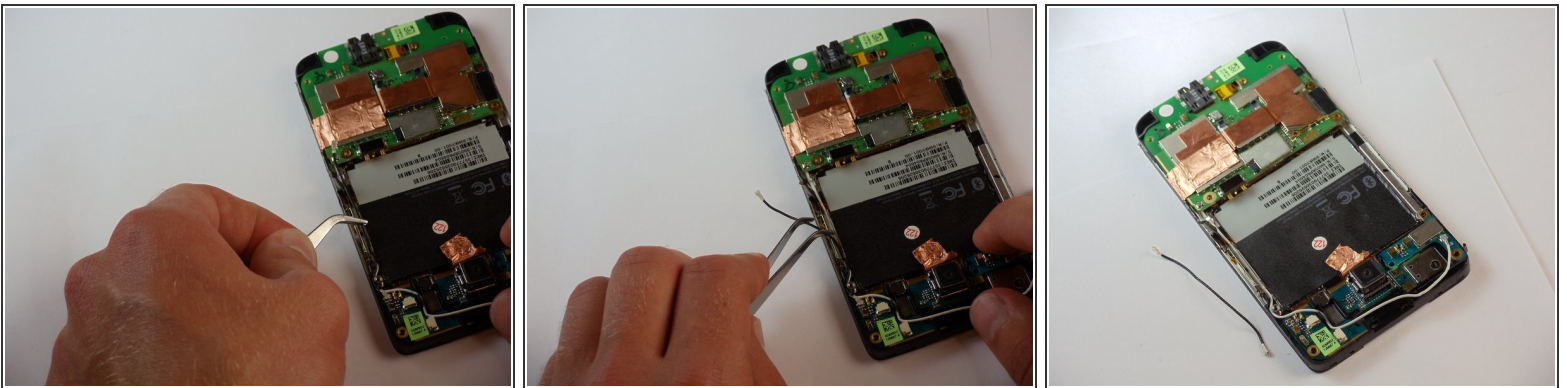
- Disconnect the flash cable from its socket at the bottom of the motherboard.
- Carefully pull the flash cable from its slot in the side of the phone.

## Step 13



- Pull the camera flash and cover off of the board.
- ⓘ You may need to peel back the sticker that sits behind the battery.
- ⚠ Work carefully. Excessive force can damage the camera or motherboard.

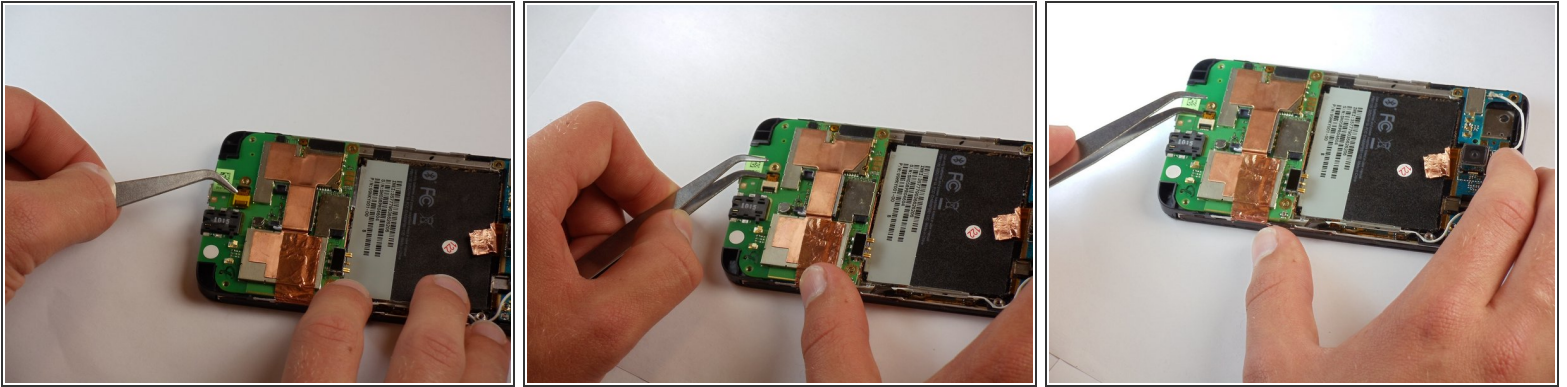
## Step 14



- Now locate the coaxial bluetooth cable that connects the top and bottom boards of the phone.
- Use tweezers to pop both ends of the cable from the boards and remove it completely.

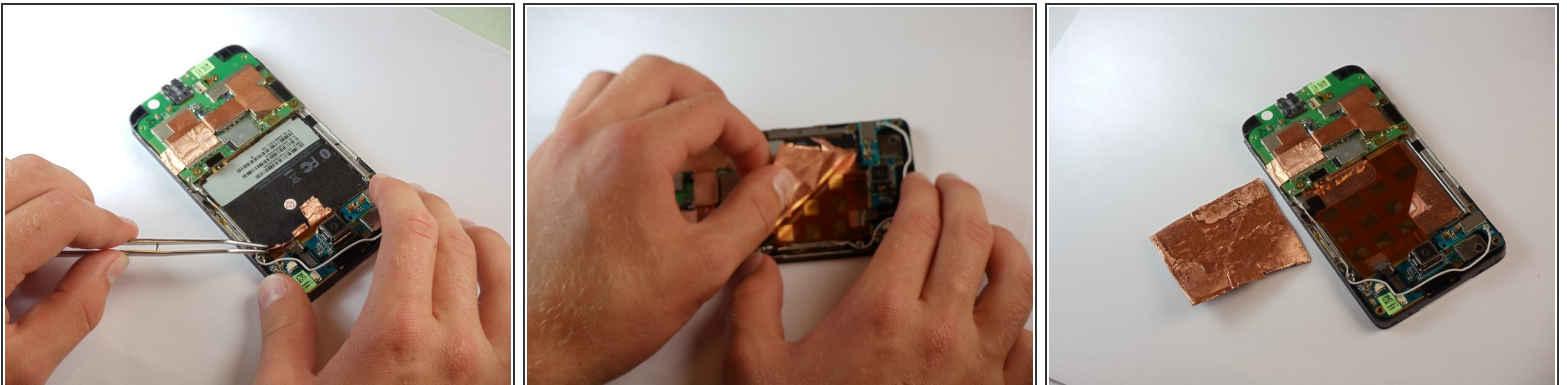



## Step 15



- Now find the AP FPC, one of the smallest connectors on the bottom board.
- Pop the small black tab up using tweezers, then unplug the cable.

## Step 16

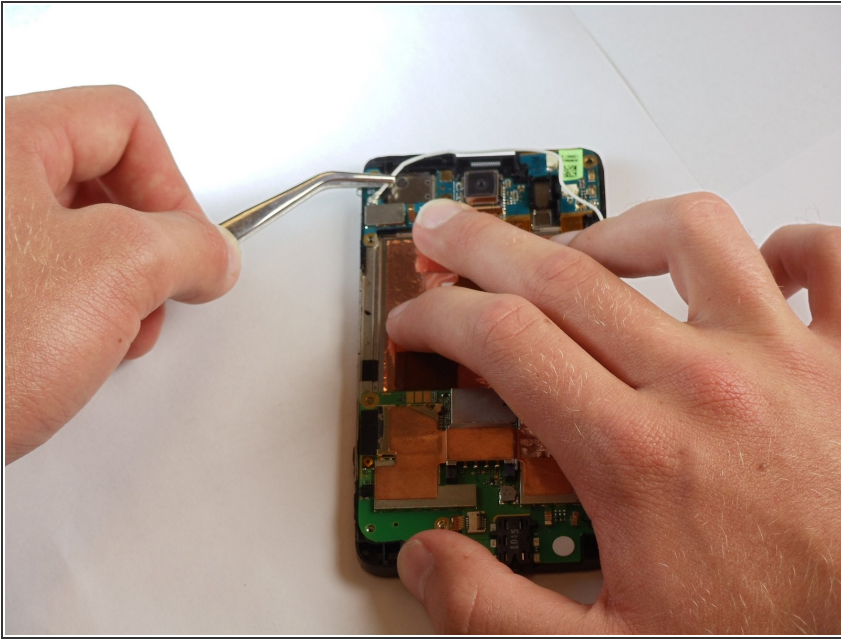


 This step is pretty much irreversible, so do not do this unless you absolutely have to.

- Remember peeling back part of that big sticker in the middle? Now you get to take it all the way off.
- This may take some time, and the use of the tweezers, but keep at it until the whole sticker is off.

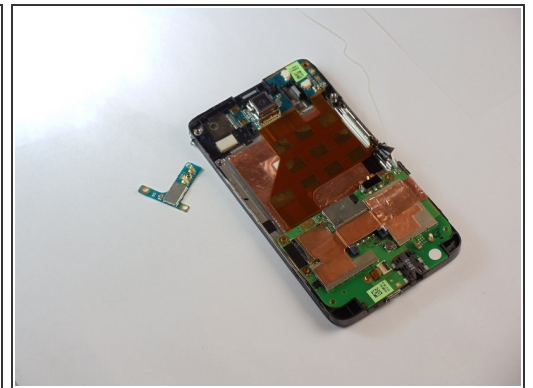
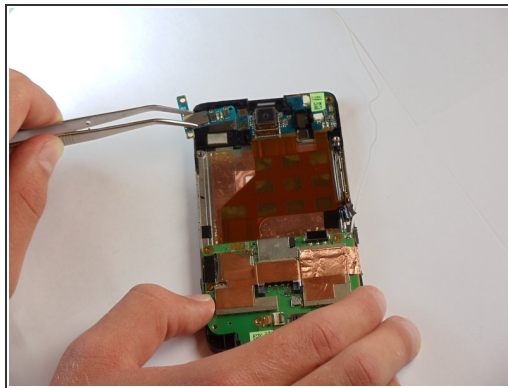
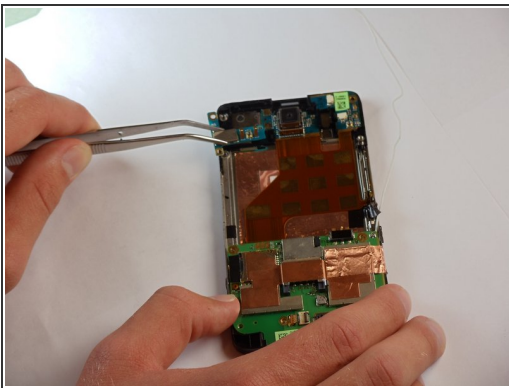


## Step 17



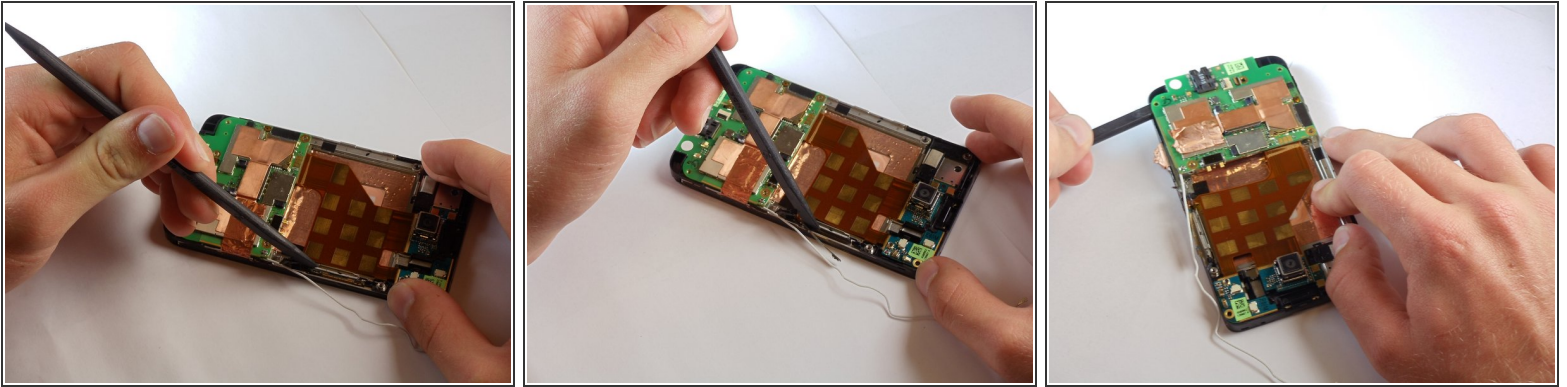
- Now find the GPS board in the upper left hand corner of the phone.
- Disconnect the white cable from its socket on the motherboard.
- ⓘ The cable does not need to be unplugged from the main bottom board.
- ★ This cable is connected to the underside of the bottom board. If it is detached, be sure to reconnect it before reassembling the phone.

## Step 18



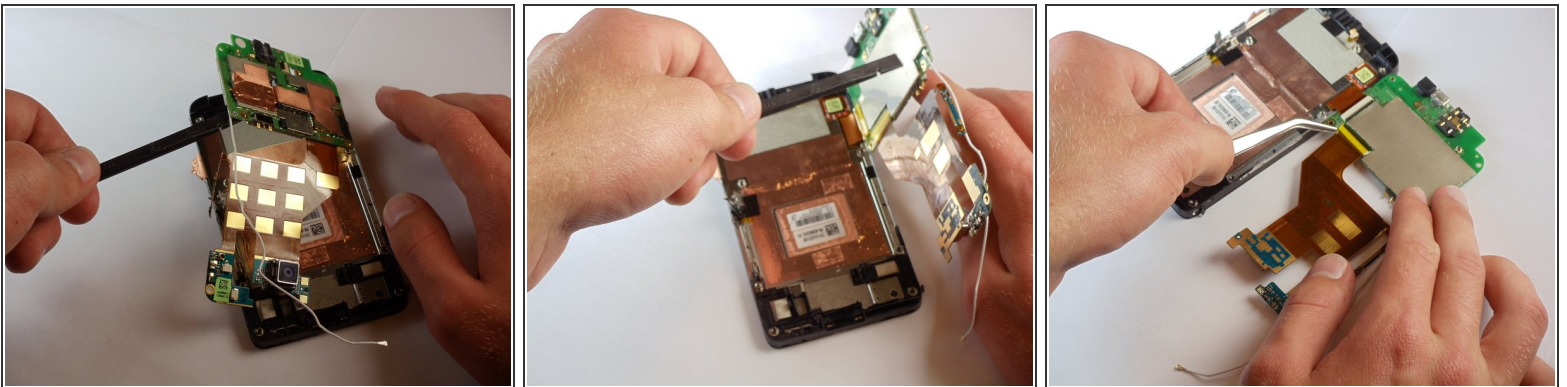
- If this step does not progress easily, check to see that there are no screws still holding the board in place.
- With the cable removed, pop the GPS board out of the phone using tweezers.

## Step 19



- Using a spudger, begin to pry the copper colored board in the middle away from the phone to loosen it.
- Also pry the small piece that runs under where the volume selector is on the full phone.

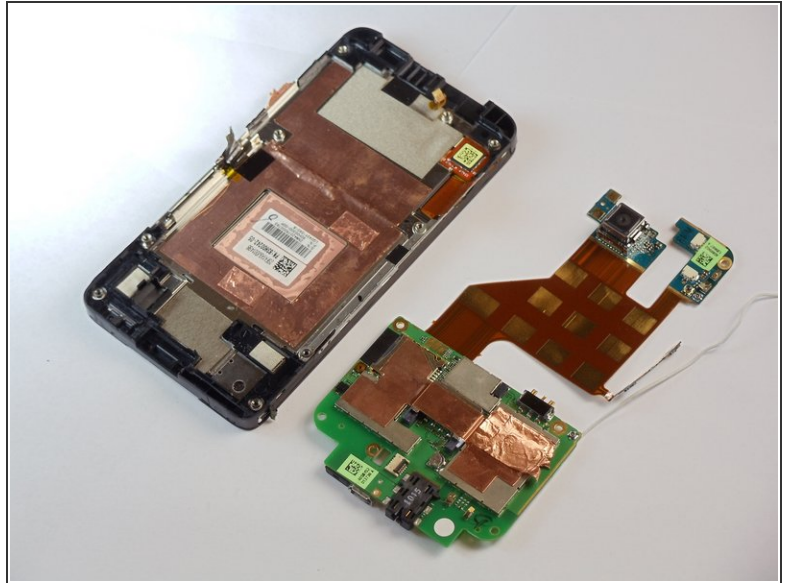
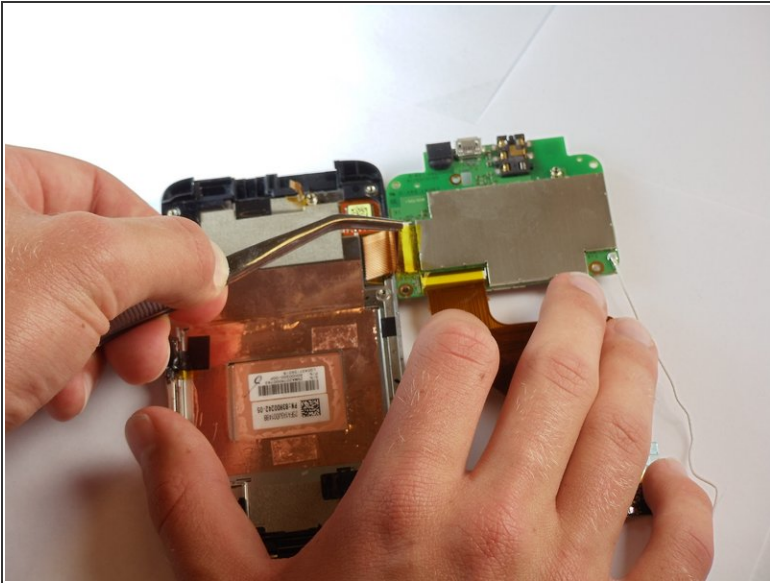
## Step 20



⚠ There is a connector cable under the main board, so do not pull it all the way off right away.

- Gently pop both the top and bottom boards off of the phone, and turn them over to the left

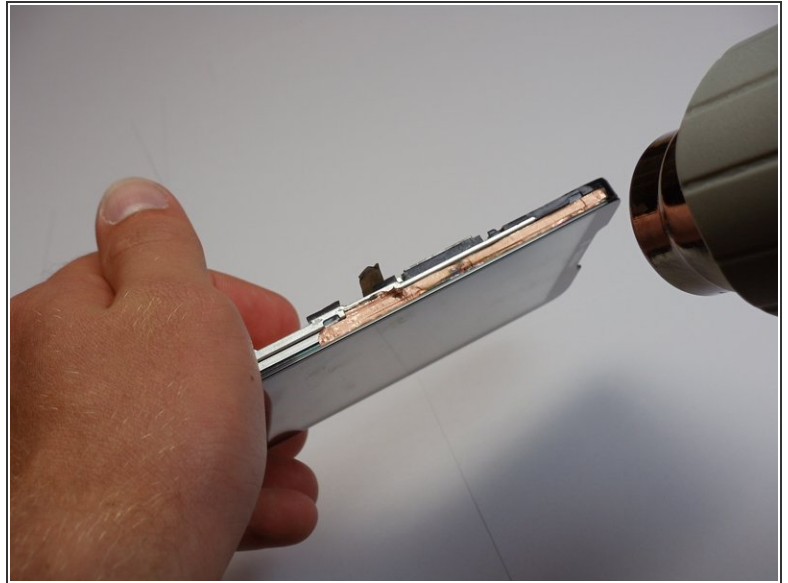
## Step 21



- With the back of the main board exposed, flip up the little brown lever at the end of the connector and unplug the final cable that connects it to the main board.



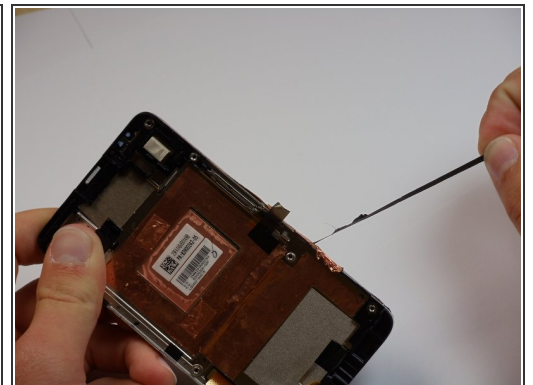
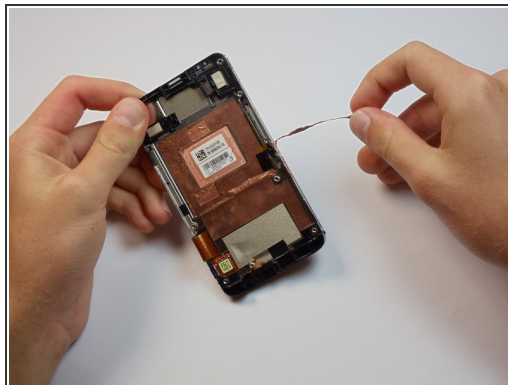
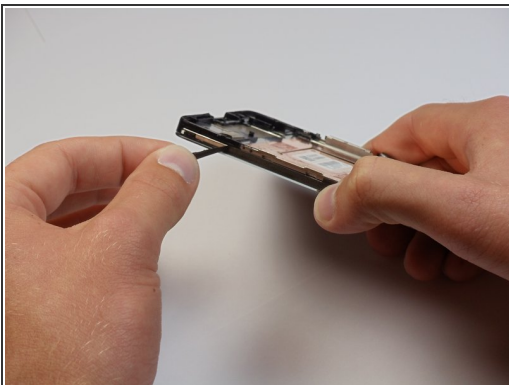
## Step 22 — Screen



**⚠ Caution:** If your screen wasn't already cracked, it is very easy to do so in the next few steps. Proceed very carefully.

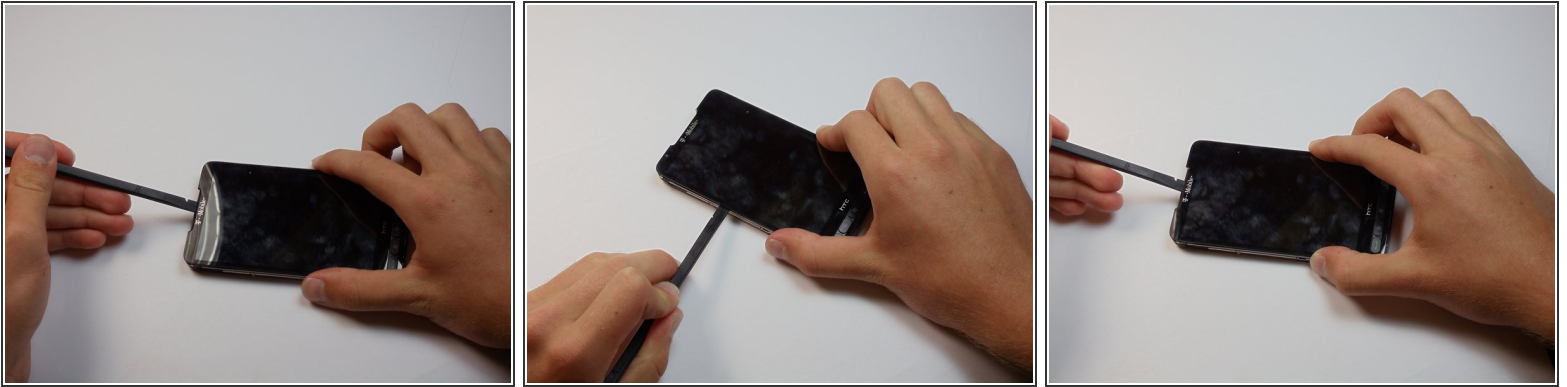
- This step could take several minutes of heating.
- Use a heat gun or hair dryer to soften the adhesive between the screen and the chassis

## Step 23



- Once heating is done, carefully peel the covering along the sides of the phone away.

## Step 24



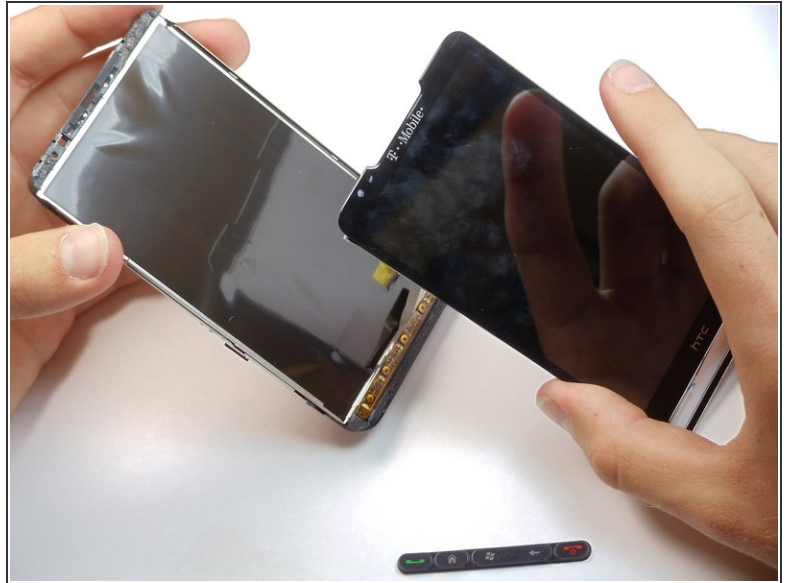
- insert the spudger into the top closer to the back of the phone and slide along to fully disengage the adhesive. Do this for both sides.
- **Caution.** The digitizer is firmly glued to LCD glass screen. Look closely to make sure you separate the digitizer from LCD panel and not part of LCD panel

## Step 25



- Pop the row of buttons out from the bottom of the phone. They should just fall out when the chassis is off.

## Step 26



- Congratulations! You have made it to the screen and front cover! Now you can replace your cracked screen.

To reassemble your device, follow these instructions in reverse order.