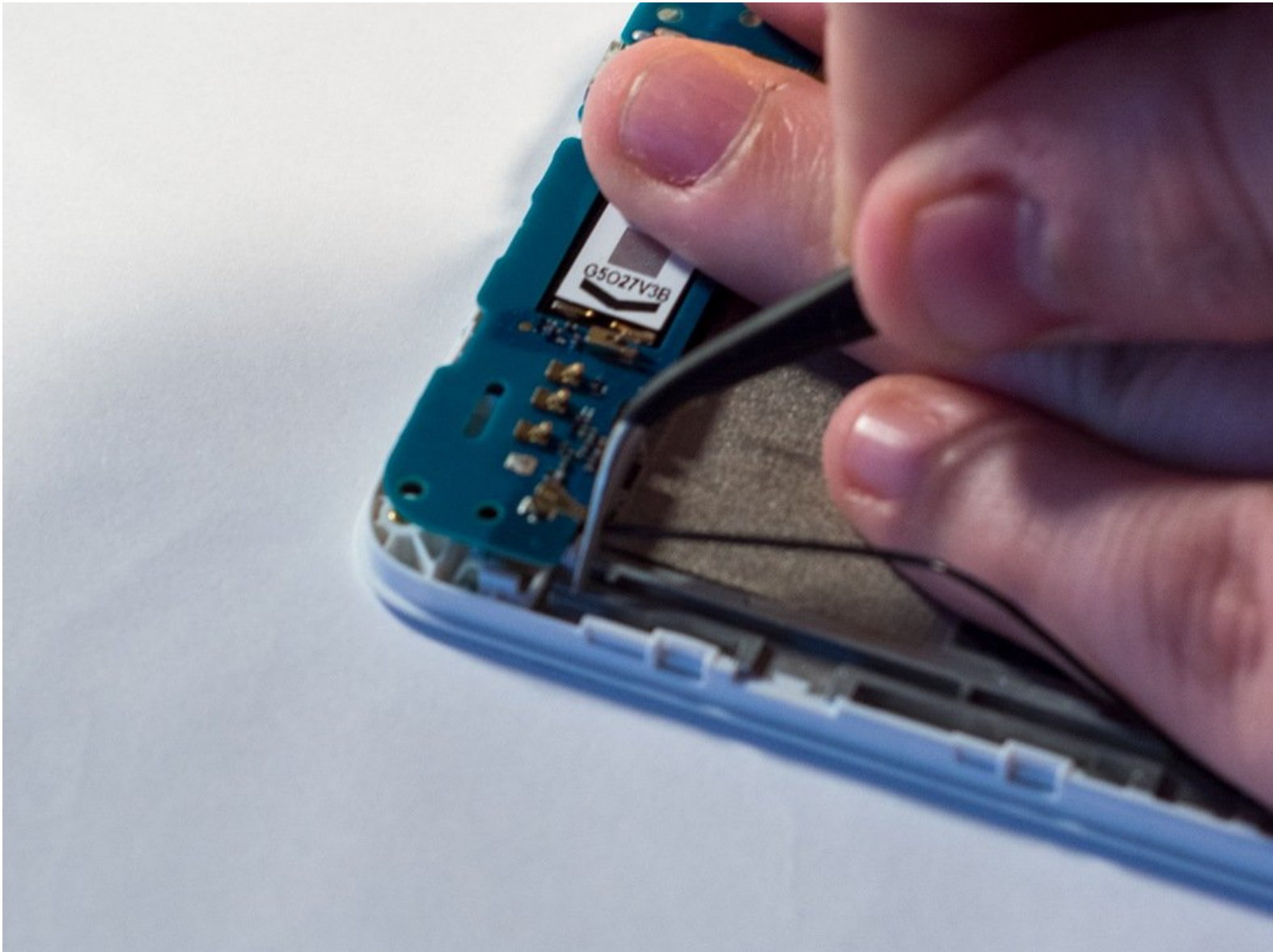




HTC OPM9200 Lower Logic Board Prerequisite

Prerequisite Only - This guide is for the removal of the lower logic board of the OPM9200.

Written By: Steve Gilland



INTRODUCTION

Prerequisite guide used for tearing down device.




TOOLS:

- [iFixit Opening Tools](#) (1)
 - [T4 Torx Screwdriver](#) (1)
 - [Phillips #00 Screwdriver](#) (1)
 - [Tweezers](#) (1)
-

Step 1 — Backplate Removal Prereq



 Before you proceed, discharge your device battery below 25%. A charged lithium-ion battery can catch fire and/or explode if accidentally punctured.

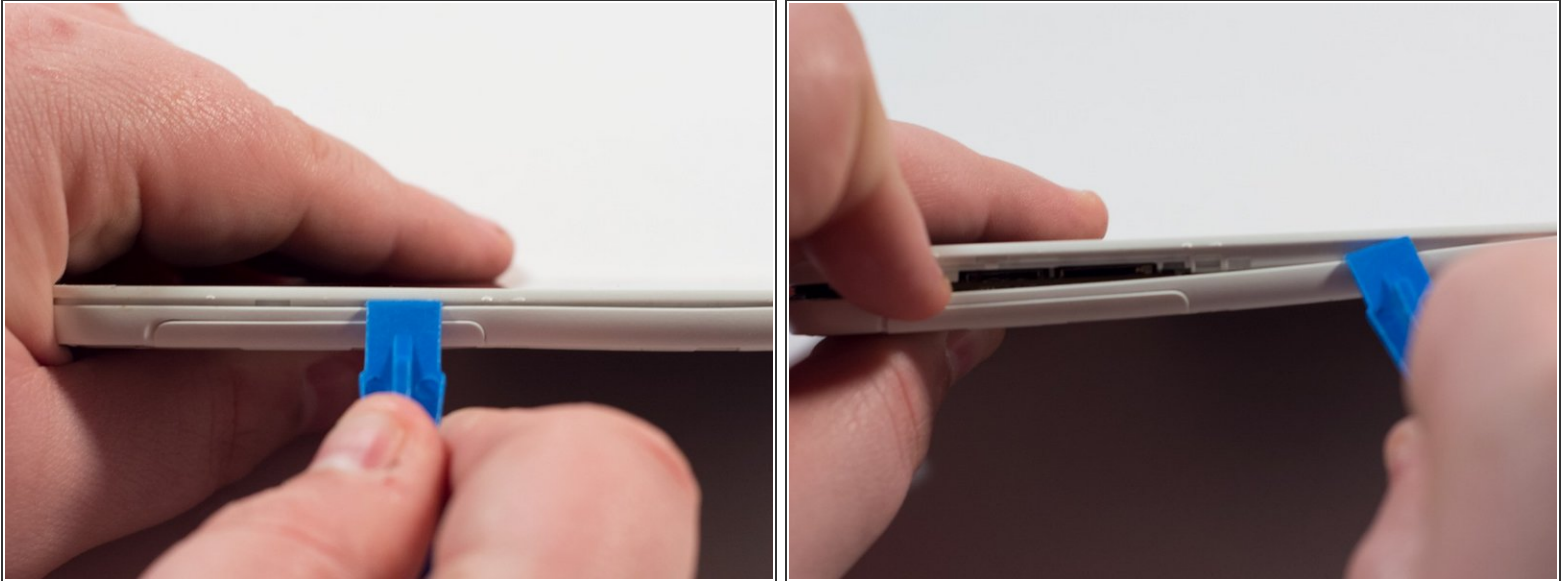
- Power off the device.
- Locate the SD Card/SIM Card cover flap on the left side of the device.
- Upon opening the cover flap you will find slots for SD Card and the SIM Card. Carefully remove these items if your device has them and set them aside.
- Lift on the back cover to begin the removal process. Continue removing the back cover by working along the edge. Once removed set aside the back cover.

Step 2



- Remove the five 3.5mm T4 Torx Screws.
- Remove the two 4.5mm #00 Phillips screws.
- ⓘ Please be aware of the sticker below the battery. Following this guide past this point may void your device's warranty.

Step 3



- Place a plastic opening tool along the seam of the front plate and back plate. Run the opening tool along the seam while prying slightly in order to pop the plastic clips away from the front plate.
- Once one or two clips have popped away you may begin to use your free hand to apply additional pressure while continuing to apply prying pressure as well with the opening tool.
- ⓘ Apply constant but controlled pressure while separating the front from the back. Damage may occur if using excessive pressure while separating the plates along the seam.

Step 4



- Continue working your way around the seam between the two parts and eventually you will be able to separate the entirety of the backplate revealing the internals of the device.

Step 5 — Battery Removal



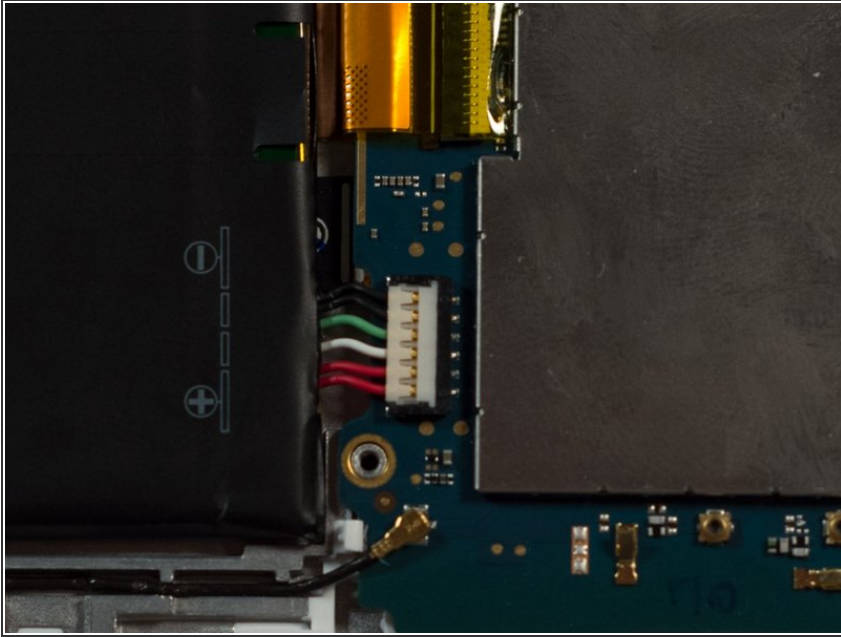
- Note the position of the battery connector.
- ⚠ We will be prying on the battery shortly which may cause accidental pressure to be place on this connector. Be careful not to damage this connector while removing the battery.

Step 6



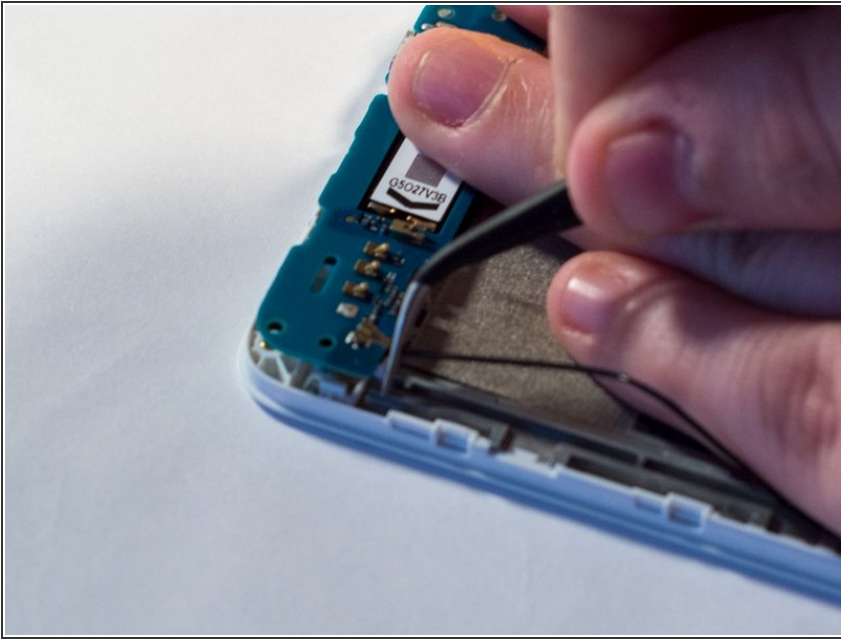
- Place the plastic opening tool to the side of the battery and work underneath the battery. Slowly and gently pry the battery away from the device removing the battery from the adhesive underneath.
- After breaking away one side of the battery from the adhesive strips you can take advantage of the additional leverage by using your hand to break free from the adhesive on the opposite side.
- ❗ You will hear cracking and popping as the battery breaks loose from the adhesive strips underneath. This is normal and to be expected.

Step 7




- After prying the battery free from the device the connector can be removed by pulling directly up away from the device.

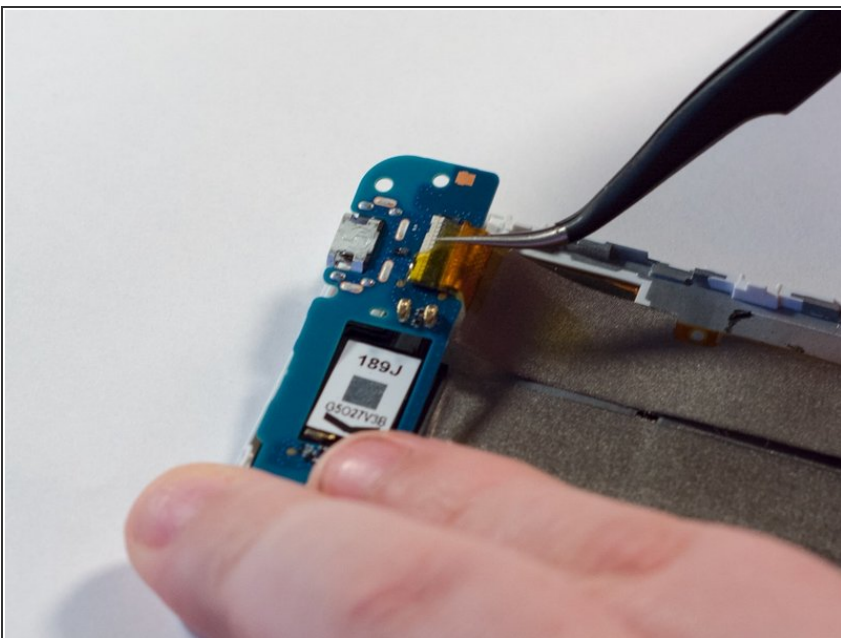
Step 8 — Lower Logic Board Prereq



- Remove the antenna connector from the bottom logic board by using tweezers. Grasp the bottom of the metal connector and pull away towards the top of the connector.

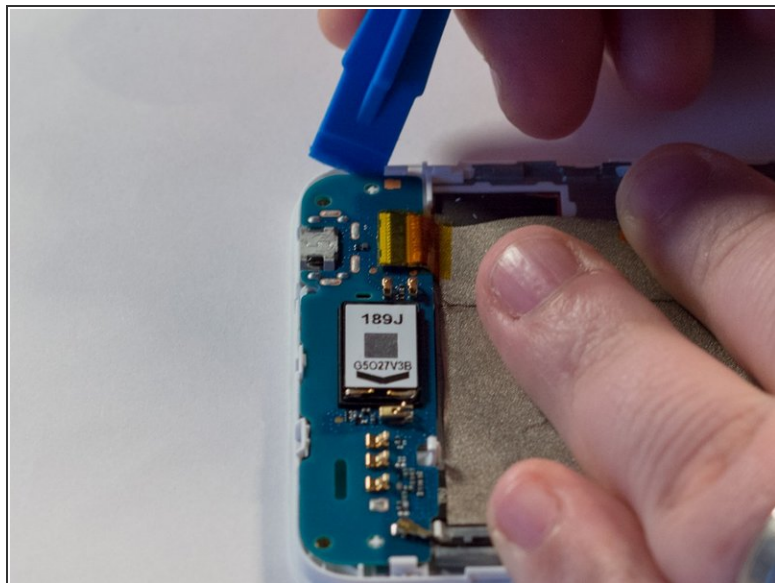
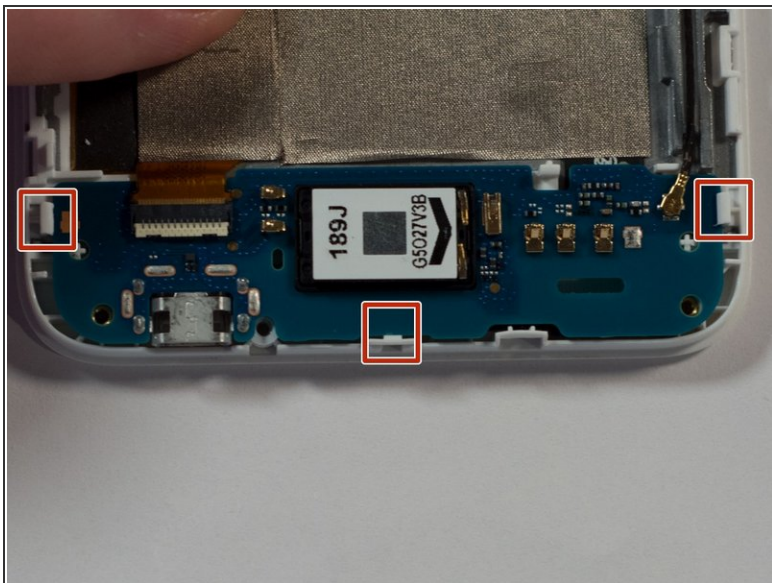
 The connector should come free easily if done correctly.

Step 9



- Remove the tape covering the connector that holds the ribbon cable to the lower logic board in place.
- Use tweezers to pull the ribbon cable free of the connector. Pulling directly away from the connector apply even and constant pressure until the cable slides free.

Step 10



- Note the position of the three plastic clips holding the lower logic board in place.
- Place the plastic opening tool along one side and slowly begin to pry up. The board will flex slightly allowing it to pass by and free of the plastic clips.

To reassemble your device, follow these instructions in reverse order.