



HTC OPM9200 Lower Speaker Replacement

Replace the Lower Speaker in your HTC OPM9200.

Written By: Steve Gilland



INTRODUCTION

No sound out of your lower speaker? No worries!



TOOLS:

- [iFixit Opening Tools](#) (1)
- [T4 Torx Screwdriver](#) (1)
- [Phillips #00 Screwdriver](#) (1)




PARTS:

- [HTC OPM9200 Lower Speaker](#) (1)

Step 1 — Backplate Removal Prereq



 Before you proceed, discharge your device battery below 25%. A charged lithium-ion battery can catch fire and/or explode if accidentally punctured.

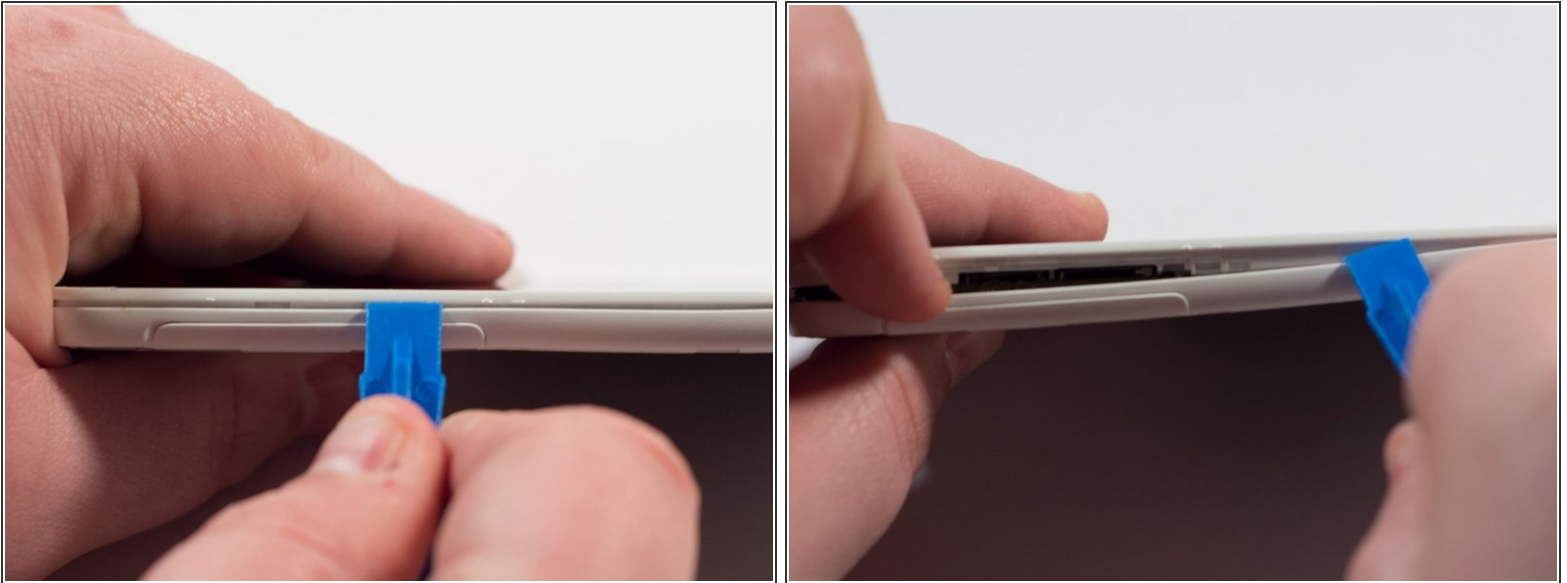
- Power off the device.
- Locate the SD Card/SIM Card cover flap on the left side of the device.
- Upon opening the cover flap you will find slots for SD Card and the SIM Card. Carefully remove these items if your device has them and set them aside.
- Lift on the back cover to begin the removal process. Continue removing the back cover by working along the edge. Once removed set aside the back cover.

Step 2



- Remove the five 3.5mm T4 Torx Screws.
- Remove the two 4.5mm #00 Phillips screws.
- ⓘ Please be aware of the sticker below the battery. Following this guide past this point may void your device's warranty.

Step 3



- Place a plastic opening tool along the seam of the front plate and back plate. Run the opening tool along the seam while prying slightly in order to pop the plastic clips away from the front plate.
- Once one or two clips have popped away you may begin to use your free hand to apply additional pressure while continuing to apply prying pressure as well with the opening tool.
- ⓘ Apply constant but controlled pressure while separating the front from the back. Damage may occur if using excessive pressure while separating the plates along the seam.

Step 4



- Continue working your way around the seam between the two parts and eventually you will be able to separate the entirety of the backplate revealing the internals of the device.

Step 5 — Lower Speaker



- Place the plastic opening tool under the speaker and pry it away from the device.

To reassemble your device, follow these instructions in reverse order.