



HTC One Mini 2 Charging Port Replacement

These instructions will show you how to replace your charging port.

Written By: Chad Facciolo



INTRODUCTION

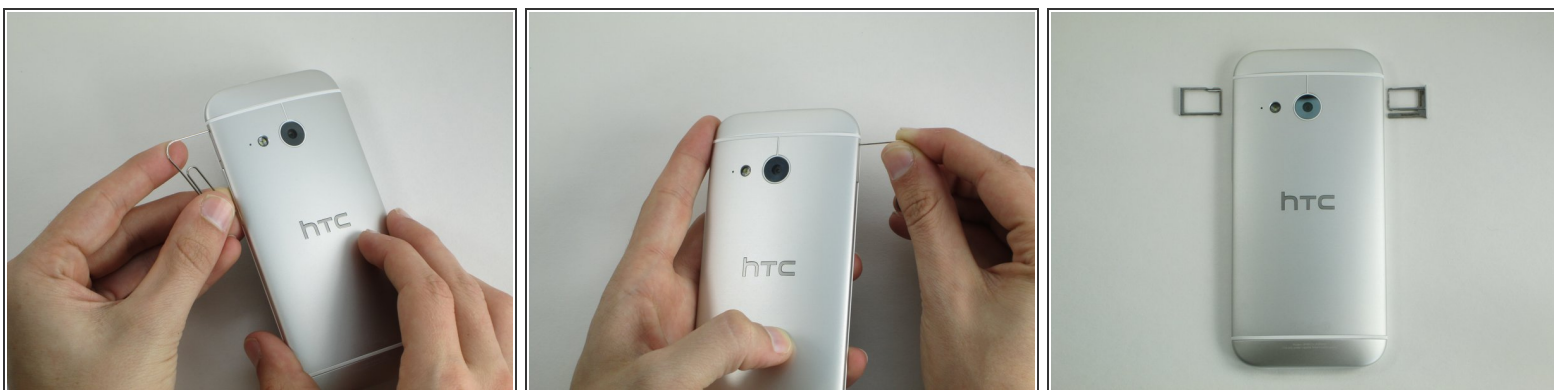
The charging port is where the charger plugs into the phone. If this piece is damaged, the phone might not be able to charge. Make sure you have tried cleaning the port before jumping into this replacement.



TOOLS:

- [64 Bit Driver Kit](#) (1)
 - [iOpener](#) (1)
 - [Magnetic Project Mat](#) (1)
 - [Paper Clip](#) (1)
 - [iFixit Opening Tools](#) (1)
 - [Metal Spudger](#) (1)
-

Step 1 — Sim and MicroSD Card



- Insert the end of a paper clip into the holes on each side of the phone to eject the SIM card and Micro SD card.
- Set the cardholders aside.

Step 2



- Heat up the top grey speaker plate with the iFixit iOpener for two minutes.

Step 3 — Front Plate



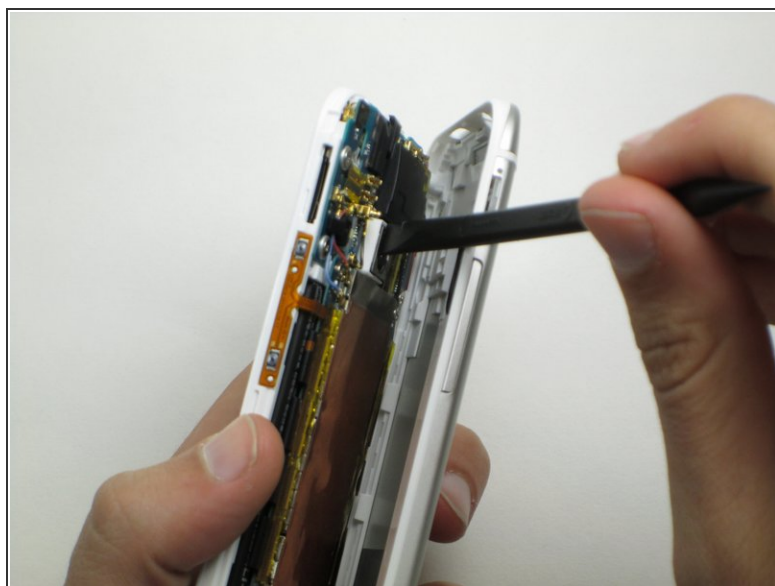
- Use a metal spudger to pry up the left edge of the upper grey front plate.
- ⓘ Place the spudger between the inside white plastic edge and the grey plate. Do not pry between the two white plastic frames.
- ⚠ Don't pry against the glass. Pry against only the left side as there is a delicate antenna under the plate.
- Use the narrow plastic pry tool to carefully separate the black ribbon antenna from the grey plate.

Step 4



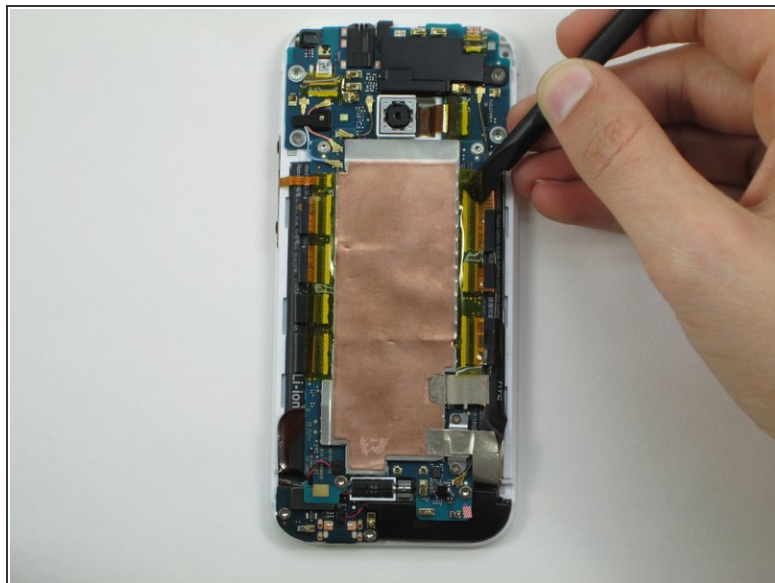
- Remove the 2mm screw with a T5 torx screwdriver head from the iFixit tool kit.

Step 5



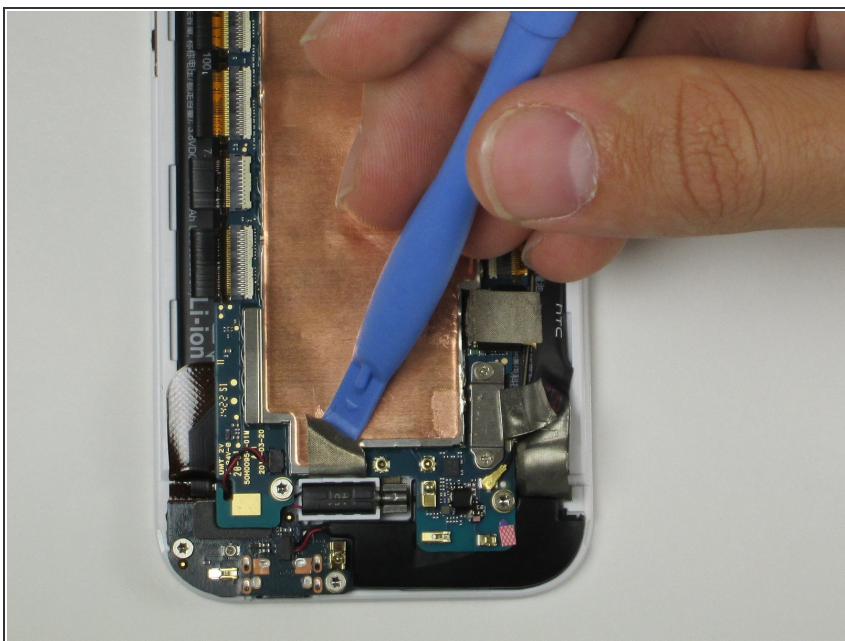
- Use the plastic pry tool to pry around the edge of the phone.
 - ⚠ Pry carefully around the card slots.
- Slowly pull up from the right side of the screen like opening a book.
 - ⚠ The plastic piece for the power button may fall out. Set it aside for reassembly.
- Use the plastic spudger to peel the foam adhesive around the camera away from the back plate.

Step 6 — Motherboard



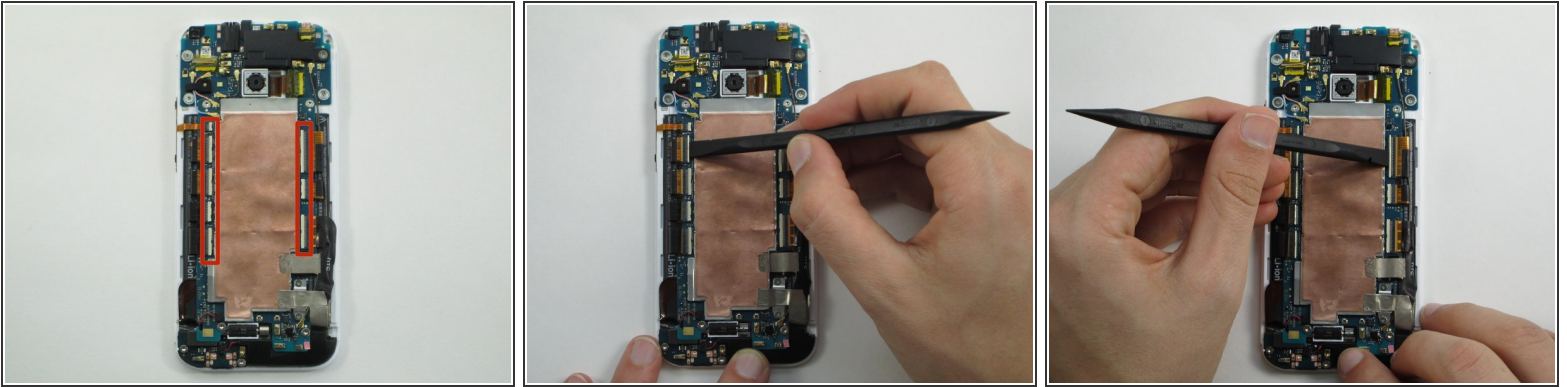
- Peel off the long yellow pieces of tape on the right and left side of the copper plate.

Step 7



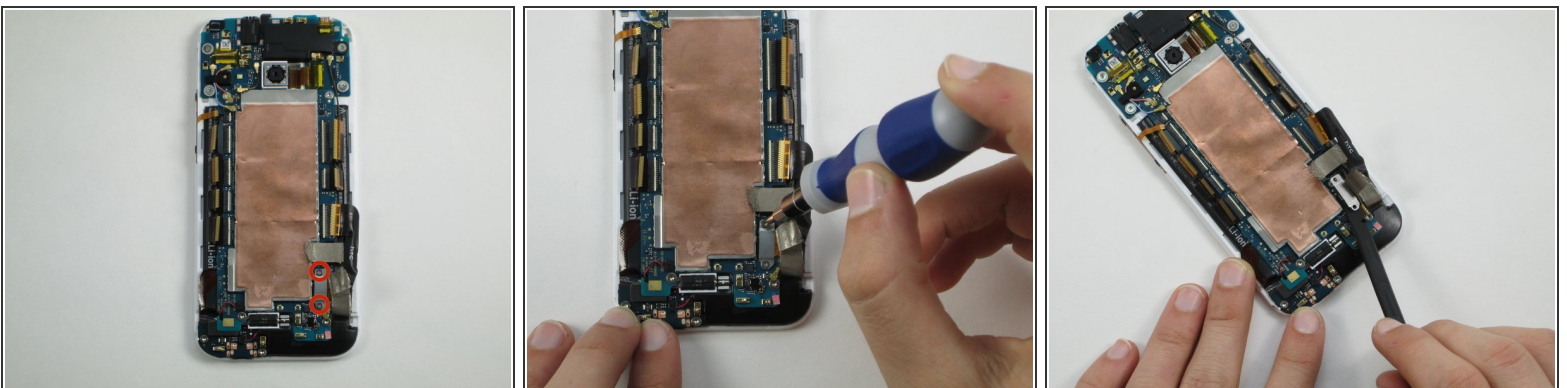
- Starting from the copper plate, peel up all three woven, silver colored tapes using the spudger or narrow pry tool.

Step 8



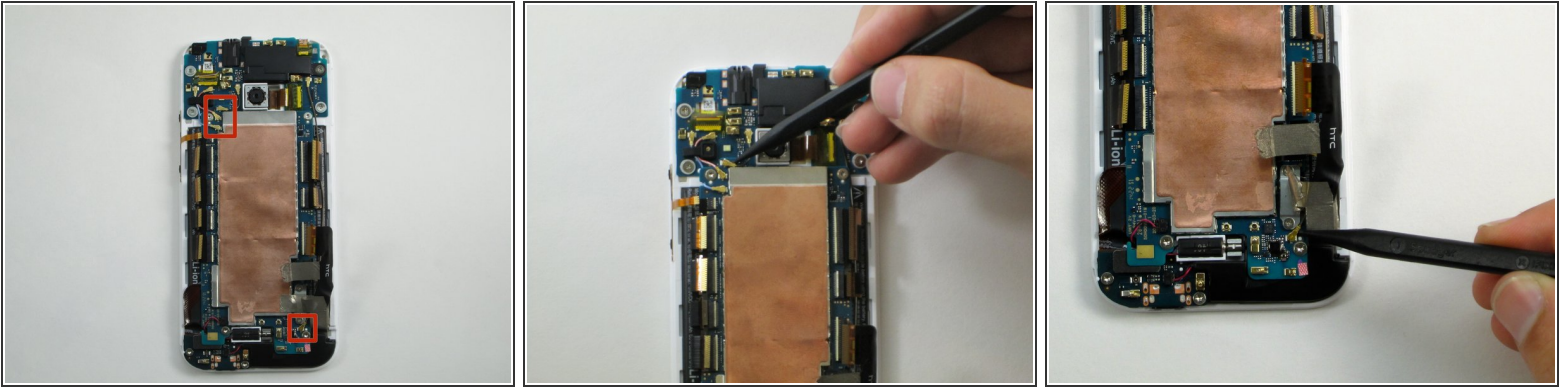
- Using the flat end of the spudger, pop up the white tabs on all ribbon cable connectors located to the left and right of the copper plate.
 - ⓘ On the left side, pop the white tab up to the left. On the right, pop up to the right.
- Carefully pull out the ribbon cables.

Step 9



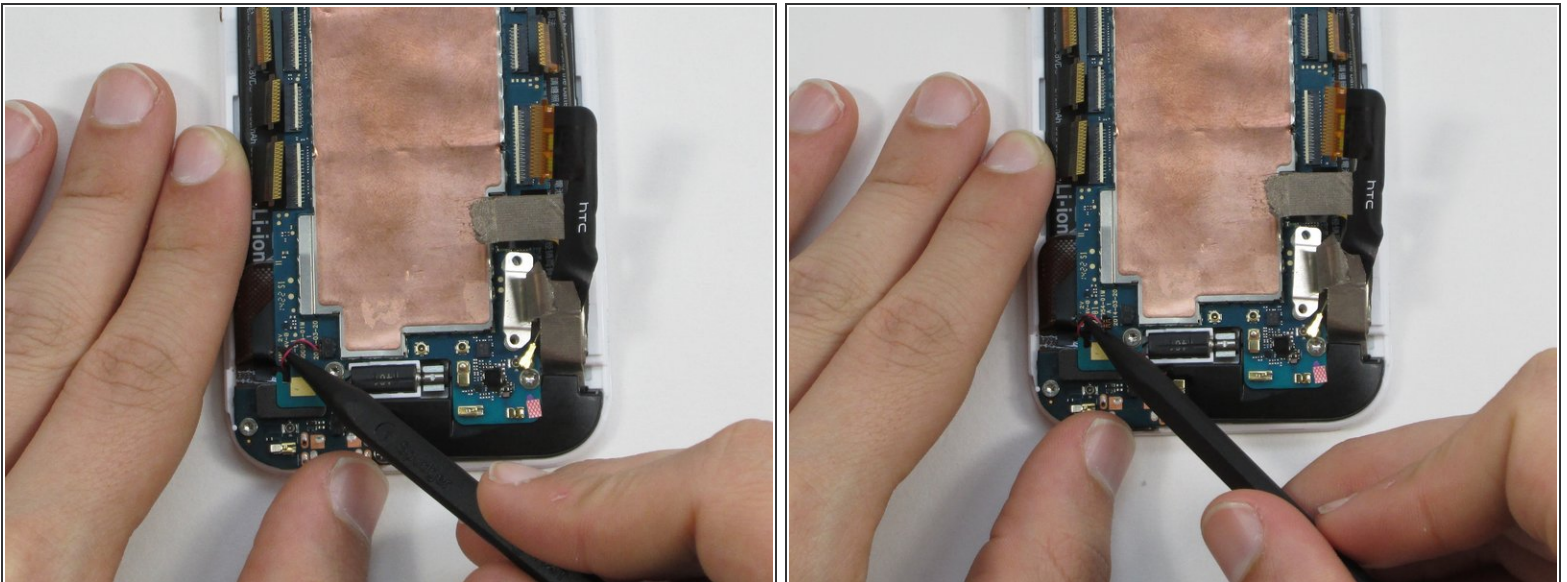
- Using a Phillips #00 screwdriver, unscrew the two 1 mm screws from the bottom right corner of the motherboard that hold the power connector down.
- Pop up the battery connector using the flat end of the spudger.

Step 10




- Use the pointed end of the spudger to pop off the four antenna connectors. Three are located on the top left corner of the motherboard and one on the bottom right.

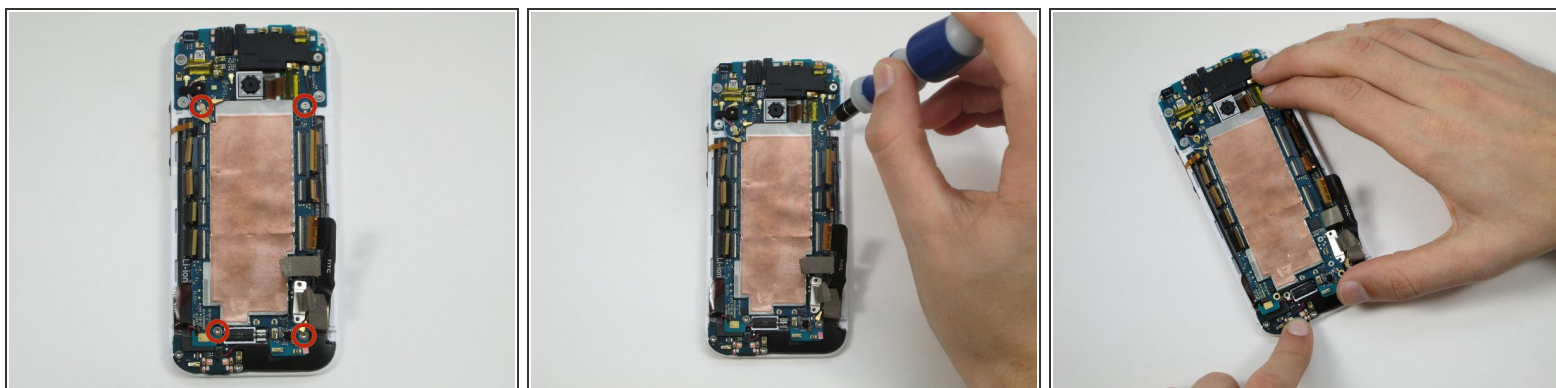
Step 11



- Using the pointed end of the spudger, pull the wires for the rumble motor to the left to pull the connector out of the board.

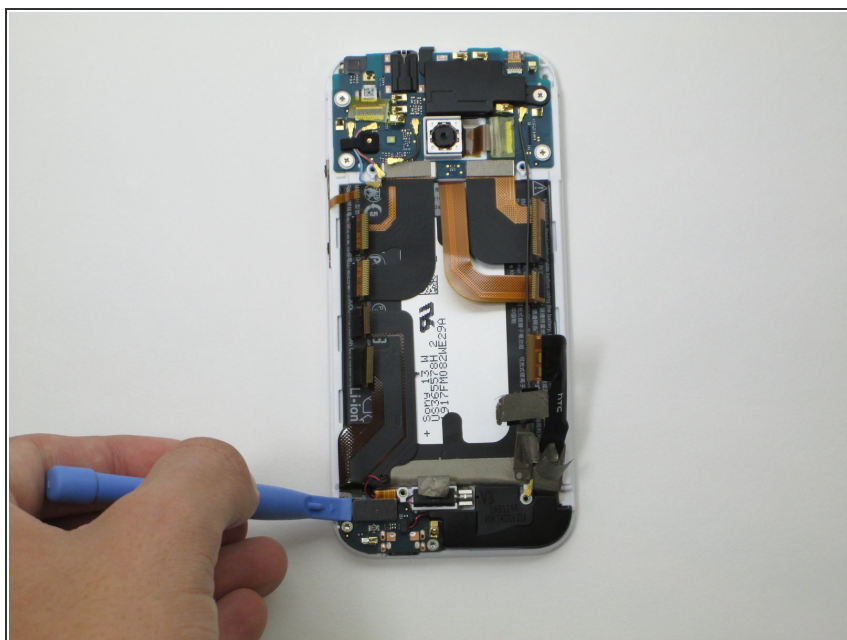
 The connector is very small and easy to break so take caution when pulling it out. Wiggling the wires as you pull to the left helps.

Step 12



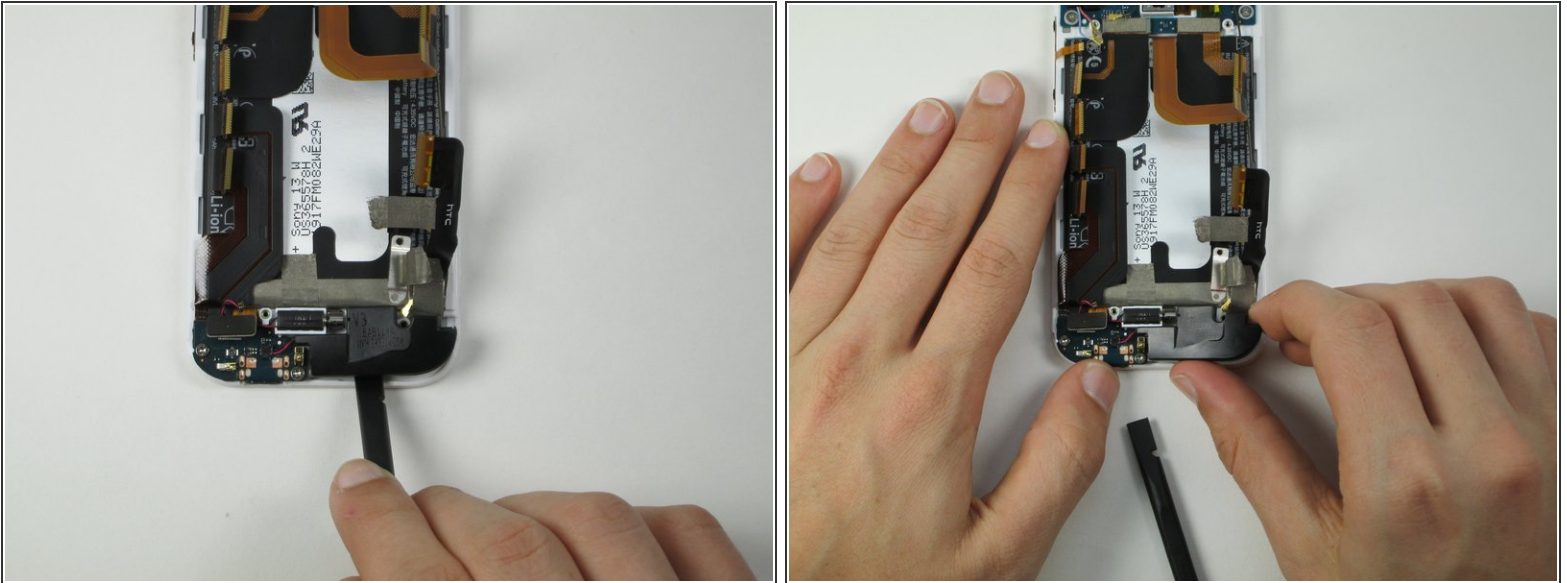
- Using a T5 torx screwdriver, remove four 2mm screws from the four corners of the motherboard.
- Once the screws are removed, carefully pull the copper plated motherboard out.

Step 13 — Charging Port




- Use the narrow plastic tool to pry up the black foam covered rectangular connector.

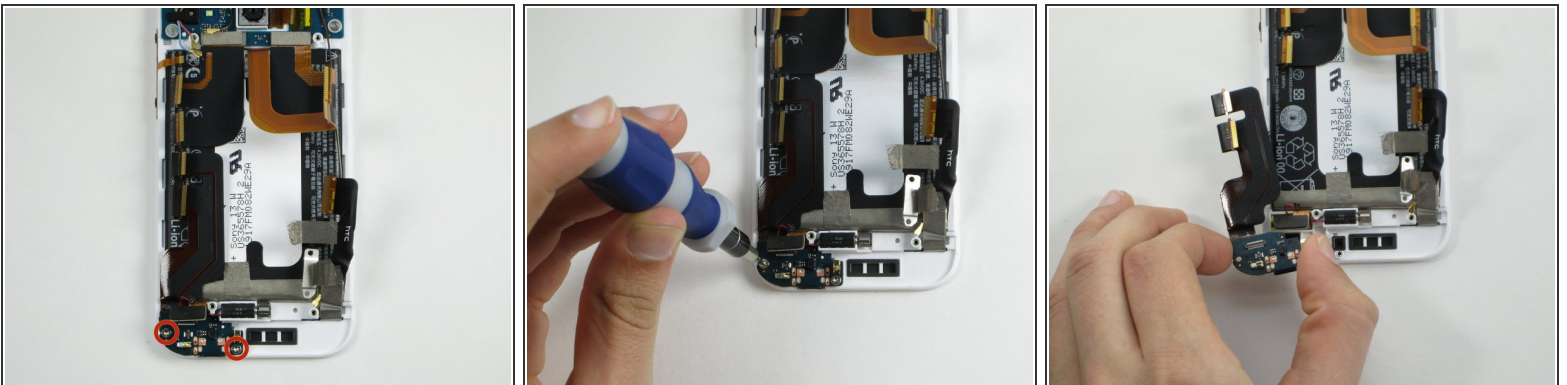
Step 14



- Use the flat end of the plastic spudger to pry the lower speaker out.
- Holding the phone, pull the speaker to the right pulling the connector out of the board.

 The connector is very small and easy to break so take caution when pulling it out. It helps to gently wiggle the wires as you pull the speaker out.

Step 15



- Use the T5 torx screwdriver from the iFixit toolkit to remove the two 2mm screws that hold the power connector board in.
- Pull the board out.

To reassemble your device, follow these instructions in reverse order.