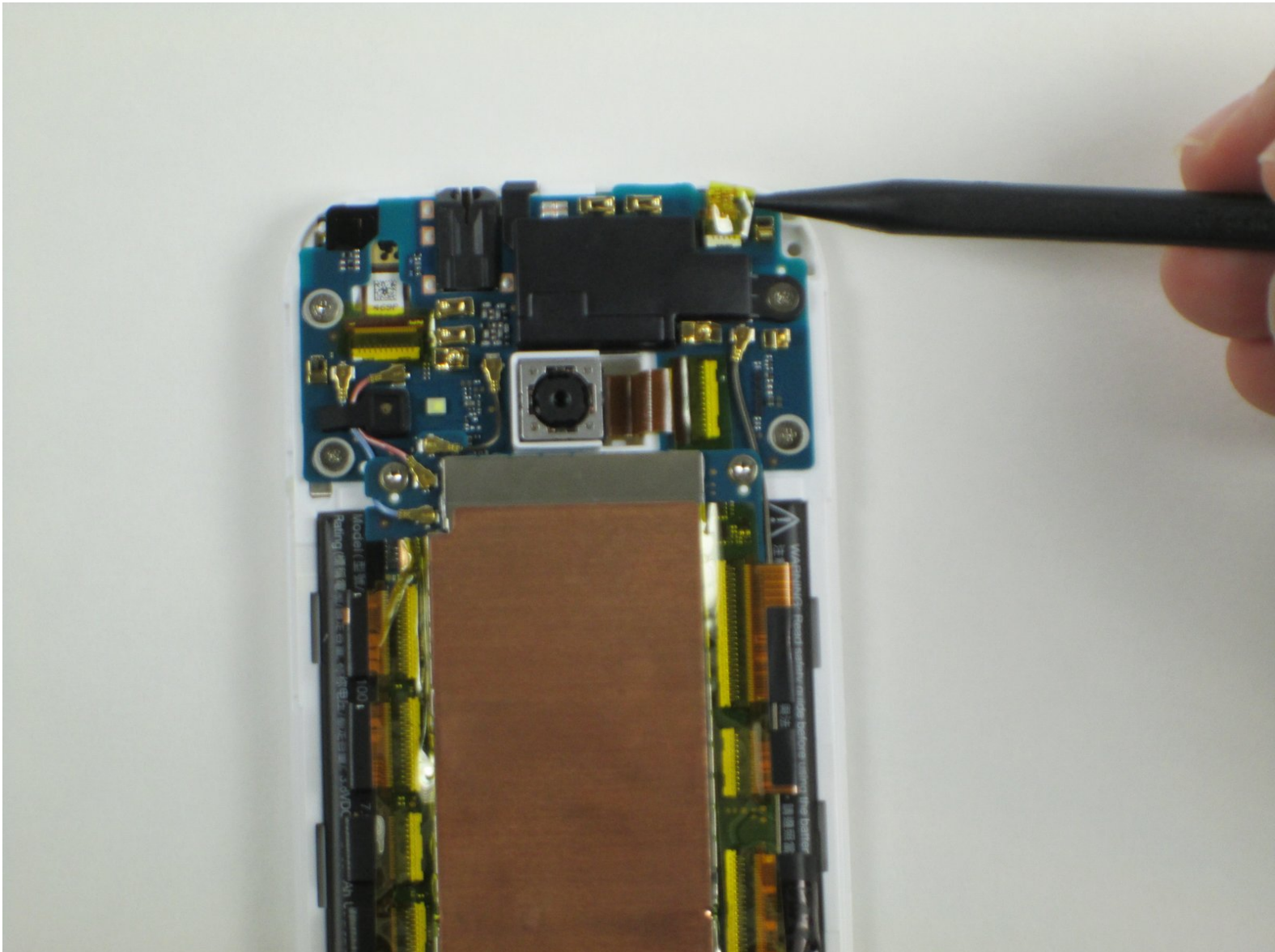




# HTC One Mini 2 Power and Volume Buttons Replacement

Use this guide to replace the power and volume buttons on your HTC One Mini 2.

Written By: Victoria Engle



---

## INTRODUCTION

This guide is to help you get into your device to replace the power and volume buttons. This is for replacing the actual component, not the outer plastic pieces.

---

### TOOLS:

- [Metal Spudger](#) (1)
  - [64 Bit Driver Kit](#) (1)
  - [Spudger](#) (1)
  - [iFixit Opening Tools](#) (1)
  - [Paper Clip](#) (1)
  - [iOpener](#) (1)
  - [Magnetic Project Mat](#) (1)
-

## Step 1 — Sim and MicroSD Card



- Insert the end of a paper clip into the holes on each side of the phone to eject the SIM card and Micro SD card.
- Set the cardholders aside.

## Step 2



- Heat up the top grey speaker plate with the iFixit iOpener for two minutes.

### Step 3 — Front Plate



- Use a metal spudger to pry up the left edge of the upper grey front plate.
- ⓘ Place the spudger between the inside white plastic edge and the grey plate. Do not pry between the two white plastic frames.
- ⚠ Don't pry against the glass. Pry against only the left side as there is a delicate antenna under the plate.
- Use the narrow plastic pry tool to carefully separate the black ribbon antenna from the grey plate.

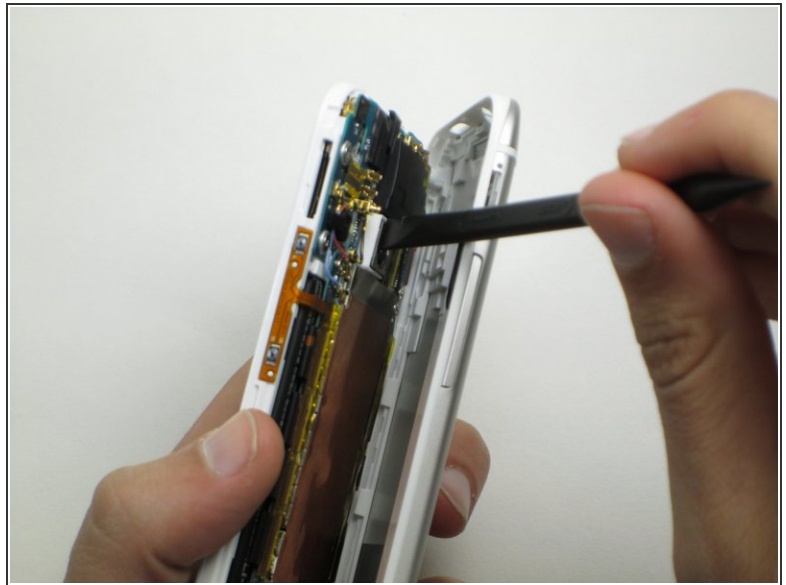
### Step 4



- Remove the 2mm screw with a T5 torx screwdriver head from the iFixit tool kit.

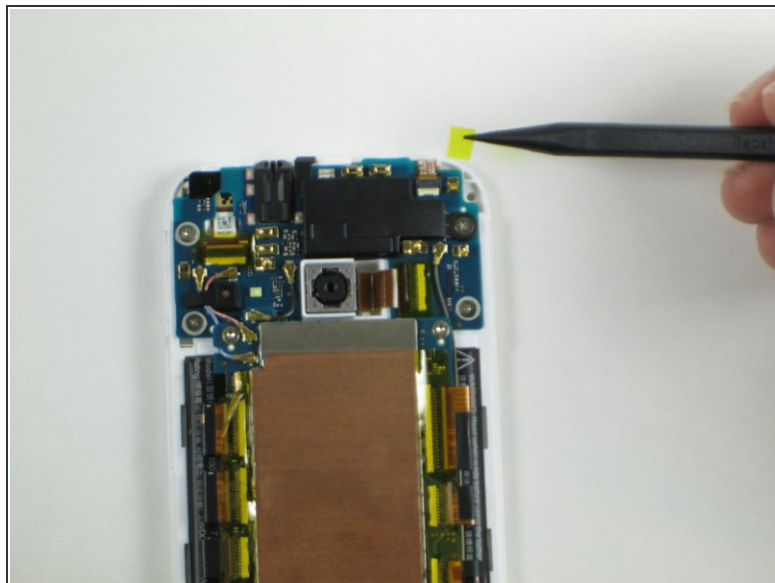


## Step 5



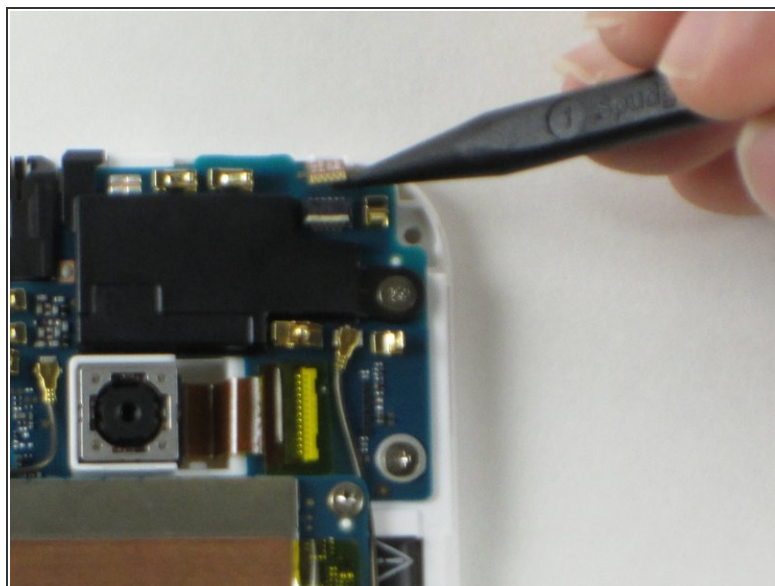
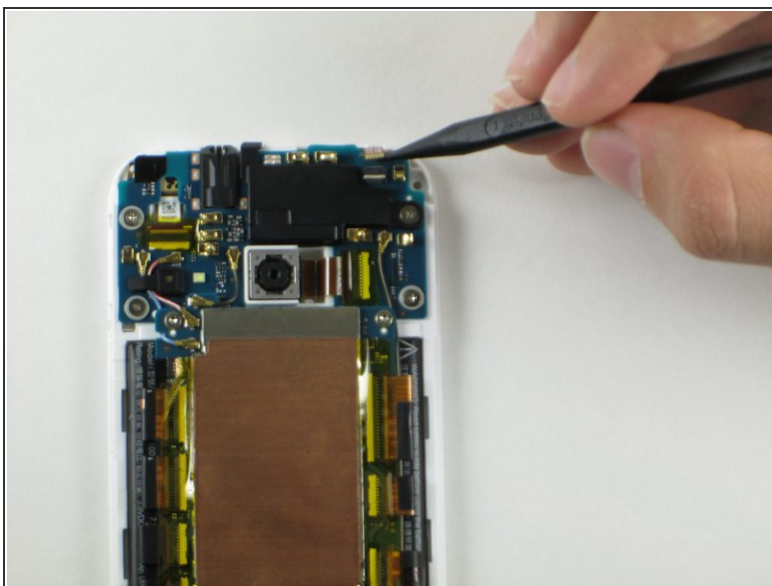
- Use the plastic pry tool to pry around the edge of the phone.
  - ⚠ Pry carefully around the card slots.
- Slowly pull up from the right side of the screen like opening a book.
  - ⚠ The plastic piece for the power button may fall out. Set it aside for reassembly.
- Use the plastic spudger to peel the foam adhesive around the camera away from the back plate.

## Step 6 — Power and Volume Buttons



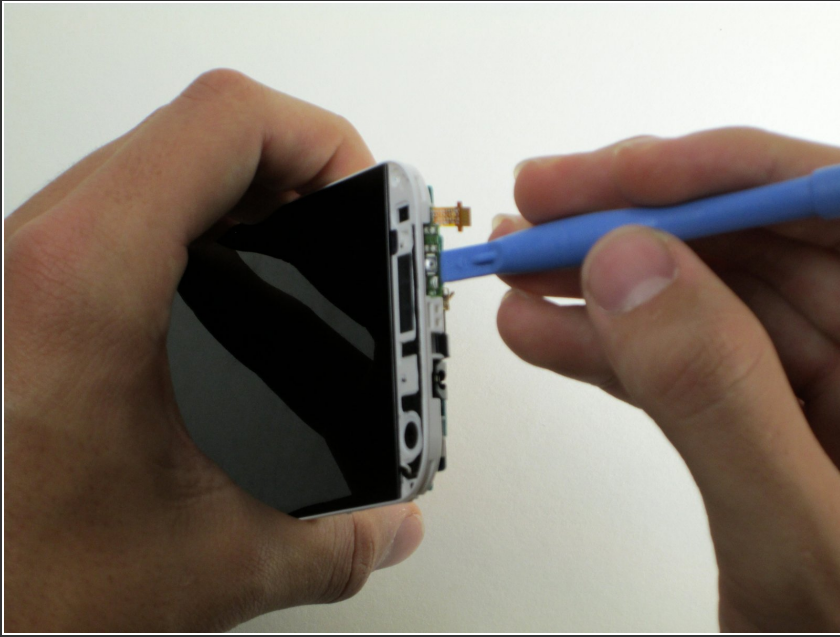
- Use the pointed end of a spudger to peel the yellow tape off of the power button connector.

## Step 7



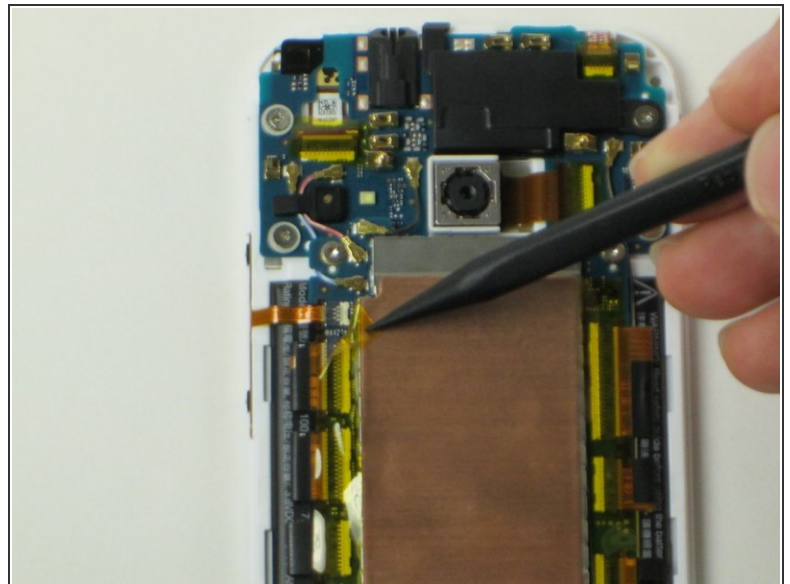
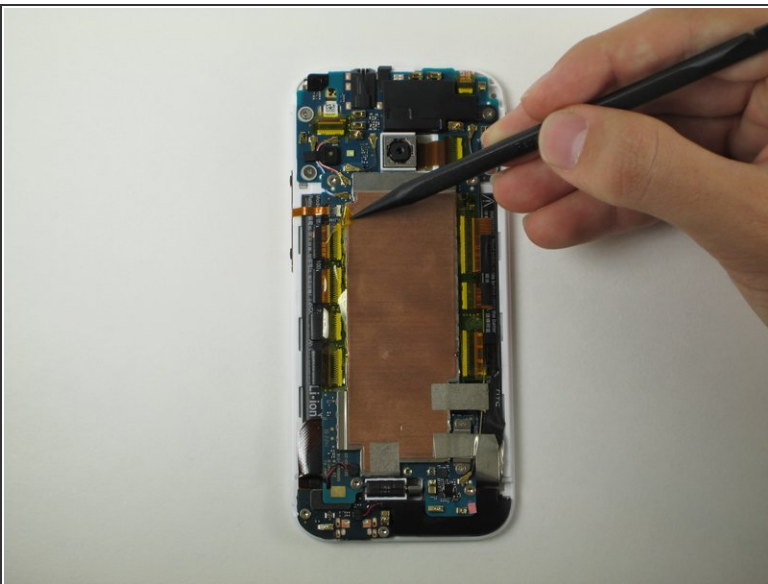
- Using the pointed end of the spudger, pop up the small white tab on the power button connector.
- Gently pull the ribbon cable out of the connector.

## Step 8



- Use a plastic opening tool to pry under the green mini circuit board to peel off the power button.
- ⓘ There is light adhesive holding the button on. This should be relatively easy to take off.

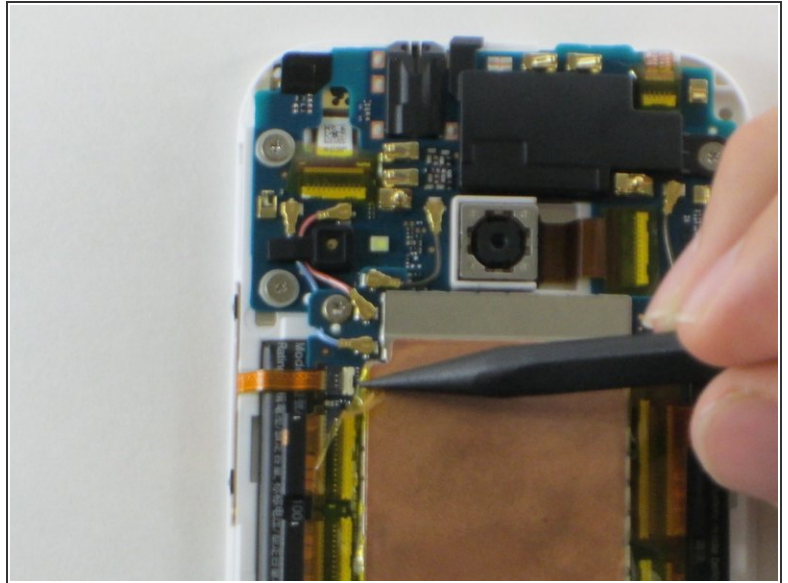
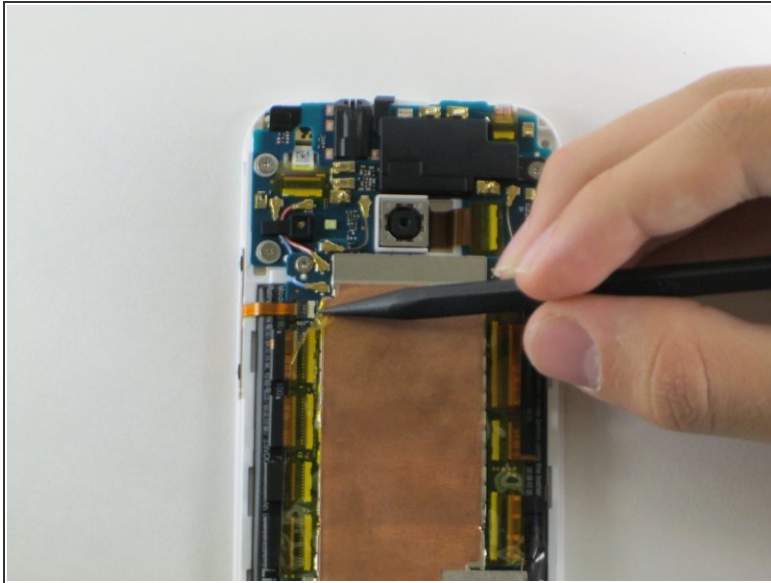
## Step 9



- Use the pointed end of a spudger to peel off the yellow tape from the volume button connector.
- ⓘ The connector is found at the top left corner of the copper plate.

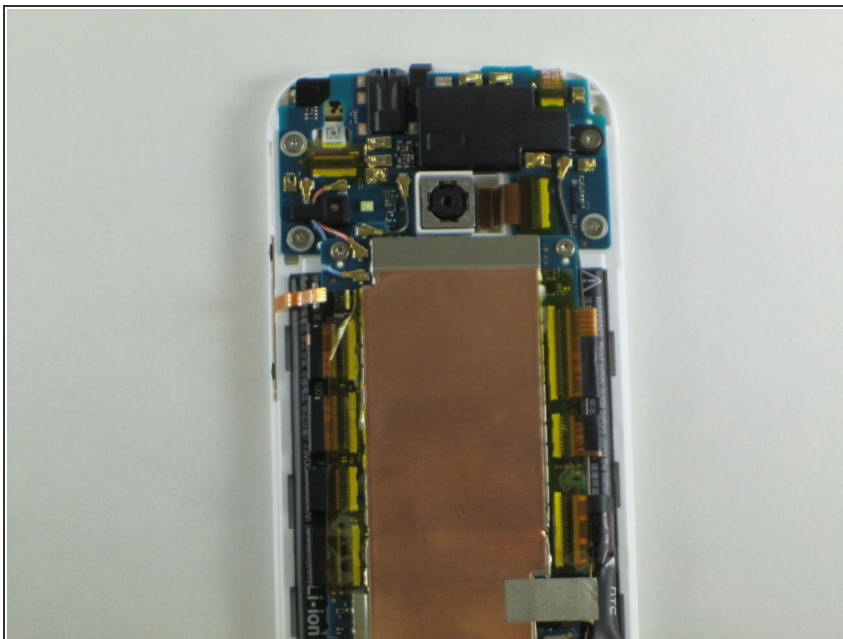


## Step 10



- Use the pointed end of the spudger to pop up the white tab to the left.

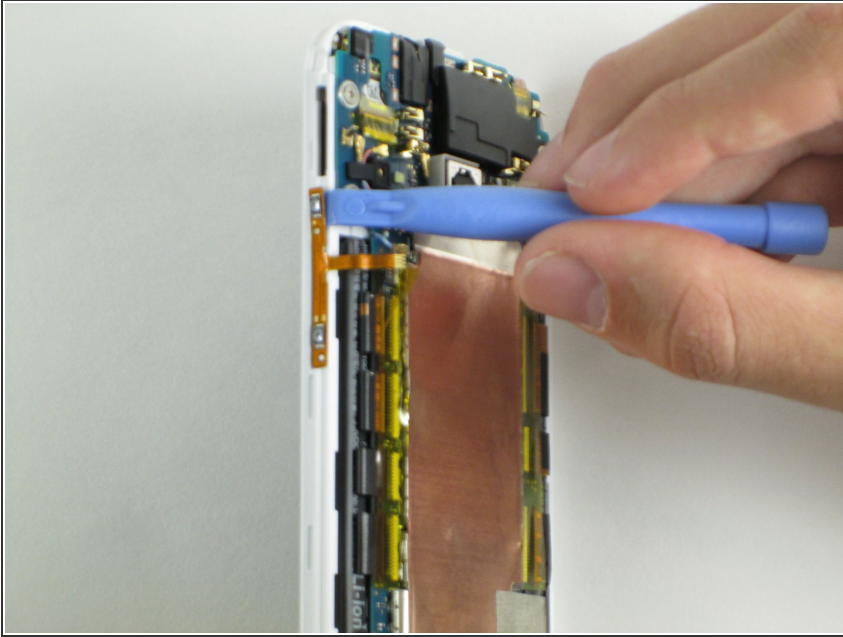
## Step 11



- Gently pull the ribbon cable for the volume buttons out of the connector.



## Step 12



- Use a plastic opening tool to peel off the volume buttons.
- ⓘ The buttons are held on with light adhesive. No heavy prying needed here.

To reassemble your device, follow these instructions in reverse order.