



HTC One S Rear Case Replacement

Replace the rear case in your HTC One S.

Written By: Dante Mazzanti



INTRODUCTION

Make your HTC One S look brand new with a new rear case.



TOOLS:

- [iFixit Opening Picks set of 6](#) (1)
 - [iOpener](#) (1)
 - [iFixit Opening Tools](#) (1)
-

Step 1 — iOpener Heating



- ⓘ We recommend that you clean your microwave before proceeding, as any nasty gunk on the bottom may end up stuck to the iOpener.
- Place the iOpener in the center of the microwave.
- ⚠ For carousel microwaves: Make sure the plate spins freely. If your iOpener gets stuck, it may overheat and burn.

Step 2




- Heat the iOpener for **thirty seconds**.
- Throughout the repair procedure, as the iOpener cools, reheat it in the microwave for an additional thirty seconds at a time.

- ⚠ Be careful not to overheat the iOpener during the repair. Overheating may cause the iOpener to burst.
- ⚠ Never touch the iOpener if it appears swollen.
- ⚠ If the iOpener is still too hot in the middle to touch, continue using it while waiting for it to cool down some more before reheating. A properly heated iOpener should stay warm for up to 10 minutes.

Step 3



- Remove the iOpener from the microwave, holding it by one of the two flat ends to avoid the hot center.

 The iOpener will be very hot, so be careful when handling it. Use an oven mitt if necessary.

Step 4 — Rear Case



- Handling it by the tag, place the heated iOpener across the bottom casing.
- ⓘ Let the iOpener sit for at least a minute to soften the adhesive beneath the casing.

Step 5



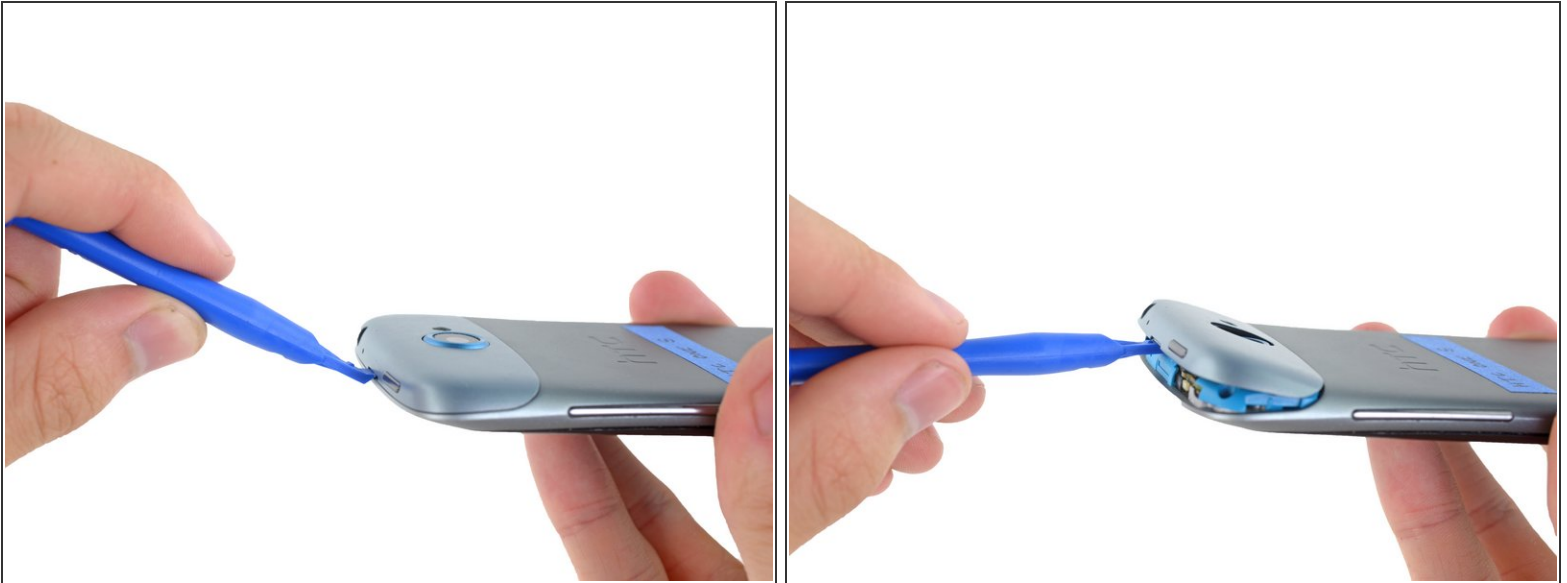
- Gently place an opening pick in the corner of the gap between the bottom casing and rear case.
- Slide the opening pick along the side of the casing, prying it away from the adhesive as you go.

Step 6



- Use your fingers to pull the bottom casing off the rest of the phone.

Step 7



- Starting at the groove near the headphone jack, use a plastic opening tool to lift the top casing.

Step 8



- Use your fingers to pull the top casing off of the rest of the phone.

Step 9



- Remove the following screws holding the rear case to the rest of the phone:
 - Two 3.15 mm Phillips #00 screws
 - One 4.15 Torx T5 screw
 - One 4 mm Torx T5 screw

Step 10



- Place your fingers on either side of the phone and gently push up on the rear case.
- i** It is important to start from the bottom of the phone because the rear case wraps around the front of the phone at the top which makes it impossible to start prying from there.

Step 11



- Pull the rear case away from the rest of the phone with your hands.

To reassemble your device, follow these instructions in reverse order.