



# HTC One X Antenna Replacement

Replacing your HTC One X antenna may help solve any issues you have regarding Wi-fi or bluetooth connectivity.

Written By: Blain Abebe



---

## INTRODUCTION

If rebooting your device or updating the software to the latest version doesn't solve your wi-fi or bluetooth connectivity, then another easy fix can be to replace your HTC One X antenna.

---



### TOOLS:

- [Tweezers](#) (1)
  - [iFixit Opening Tools](#) (1)
  - [Safety Pin](#) (1)
-

## Step 1 — Squeeze Test



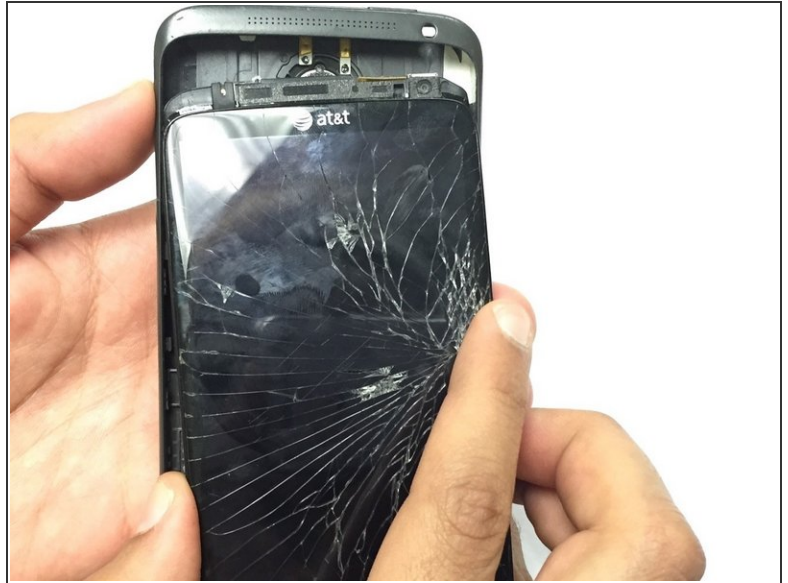
- Before replacement of the antenna, carry out the squeeze test.
- Gently squeeze your device between the camera lens and the volume button. This should temporarily reconnect the antenna if it's loose.
- If the squeeze test doesn't reconnect your wi-fi/bluetooth then move to step 2

## Step 2 — Remove SIM card slot



- Insert a safety pin, or other small object into the narrow aperture next to the Sim Card Slot to remove the SIM card.
- ⓘ The Sim Card Slot is located at the top of the rear panel.

### Step 3 — Remove front panel



- Use a plastic opening tool, and carefully insert it between the display and rear panel. Separate the two parts.
- ⓘ The display assembly is a tight fit therefore the removal must be carried out carefully with firm, constant force being applied around the bottom corners and sides of the panel. Note that the top of the phone is underneath the panel, and will not come out.
- ⚠ If your display is cracked, take extra caution when separating the display from the rear panel to prevent further breakage or bodily harm.
- Set aside the rear panel for now



## Step 4 — Replace antenna



- Once the rear panel is separated from the front panel, remove the antenna using tweezers.
- ⓘ The antenna is located on the right hand side of the front panel as indicated in the image.
- Replace and reconnect the new antenna in the same position as the faulty one you just removed. Remember to place it underneath the metal supports on the board.

To reassemble your device, follow these instructions in reverse order.