



# HTC Rhyme charging port Replacement

Replace the charging port of your HTC Rhyme.

Written By: Rebecca Chapman



---

# INTRODUCTION

This guide will show you how to replace the charging port of the HTC Rhyme.

---



## TOOLS:

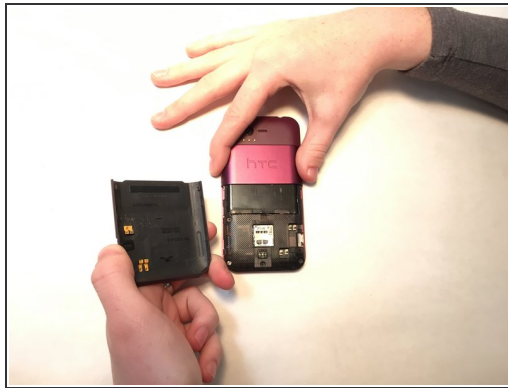
- [Tweezers](#) (1)
  - [iFixit Opening Tools](#) (1)
  - [Spudger](#) (1)
  - [64 Bit Driver Kit](#) (1)
  - [Soldering Iron](#) (1)
-

## Step 1 — Charging Port



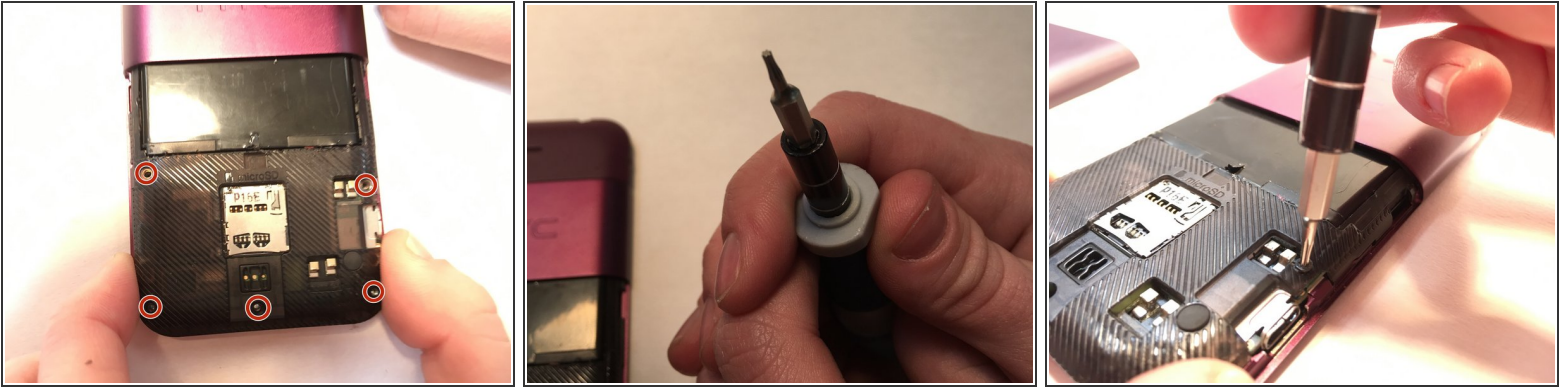
- This is the front and back of the HTC Rhyme

## Step 2



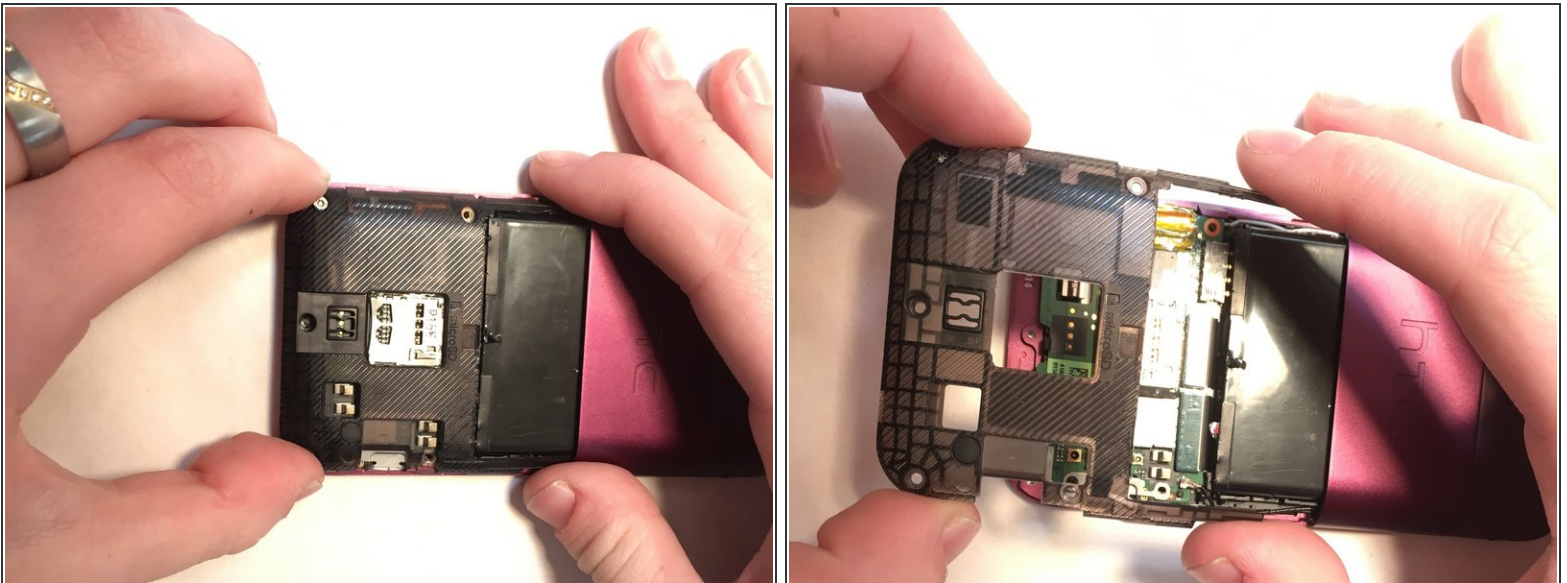
- Take off the back by sliding the cover down.

### Step 3



- Use a T5 to unscrew the 5 1.587mm screws.

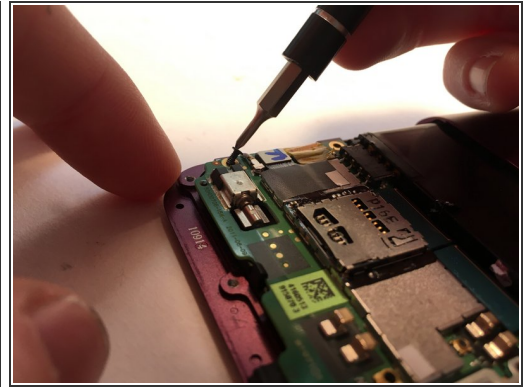
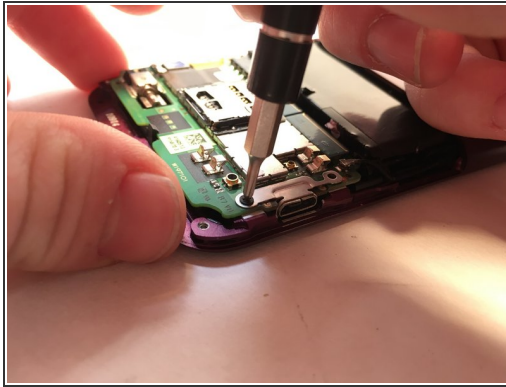
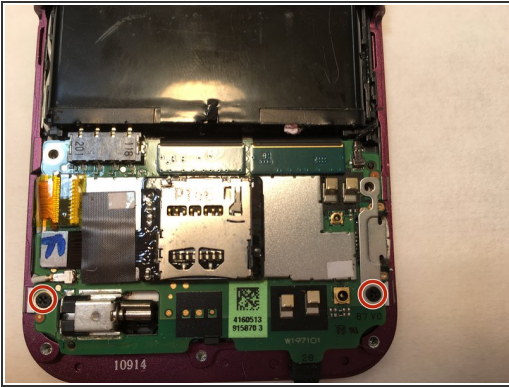
### Step 4



- Pull the back cover off of the phone.

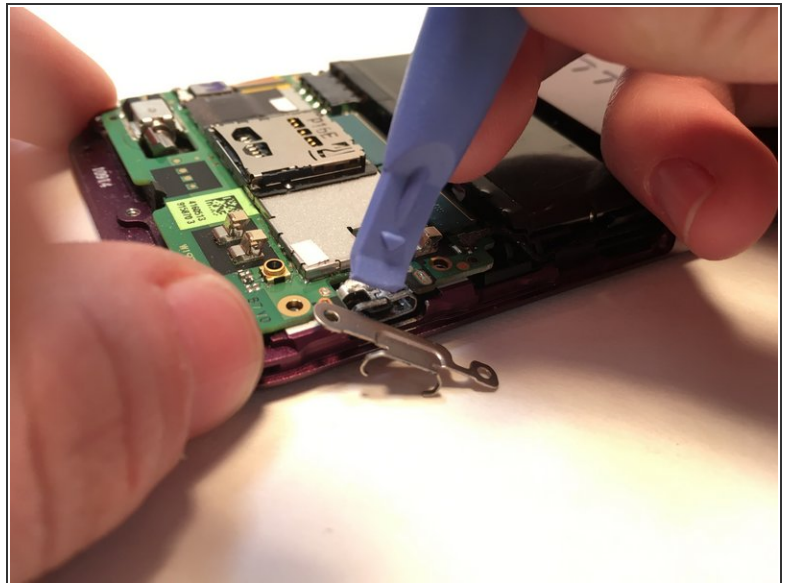
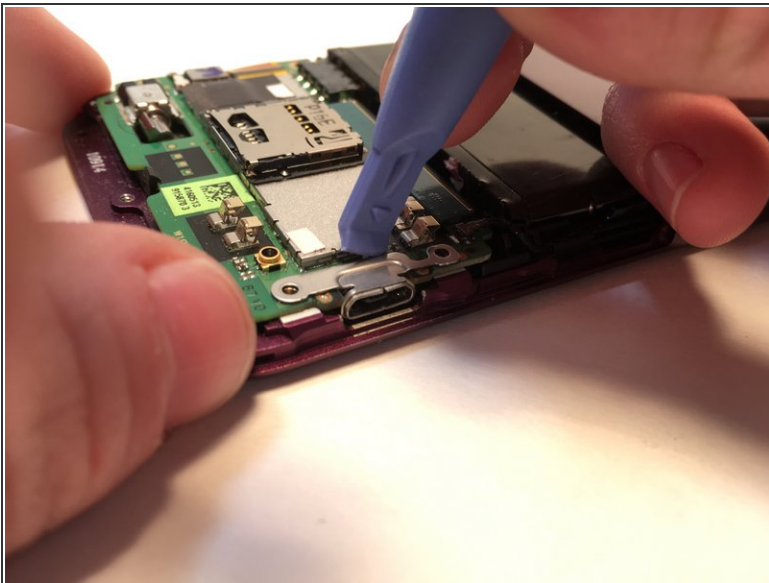


## Step 5



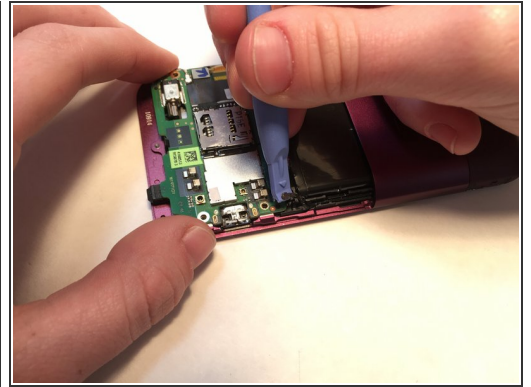
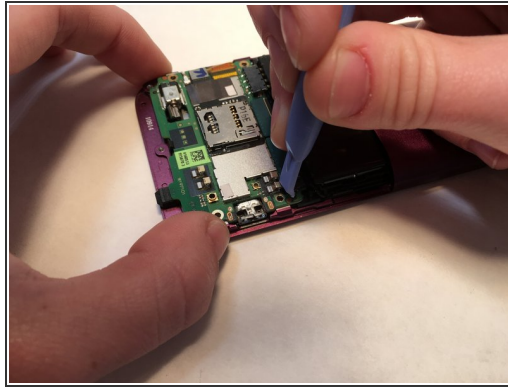
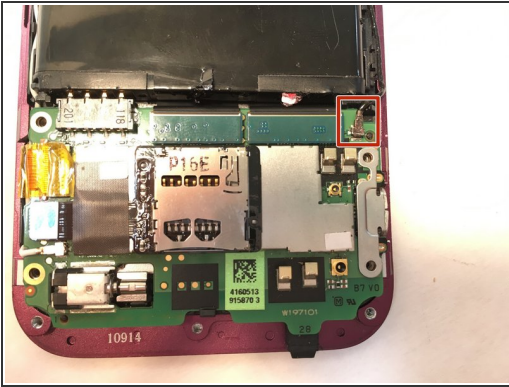
- Unscrew the two 0.793mm screws with a Phillips screwdriver.

## Step 6



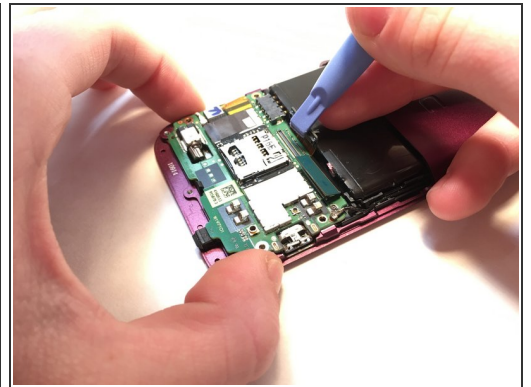
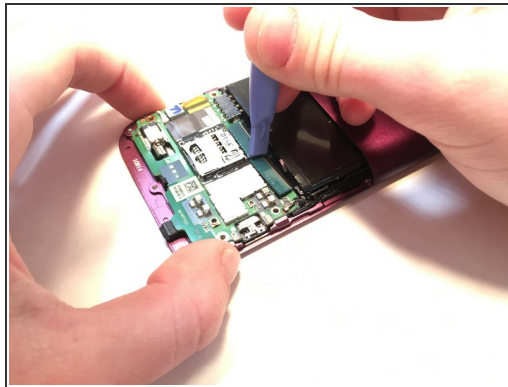
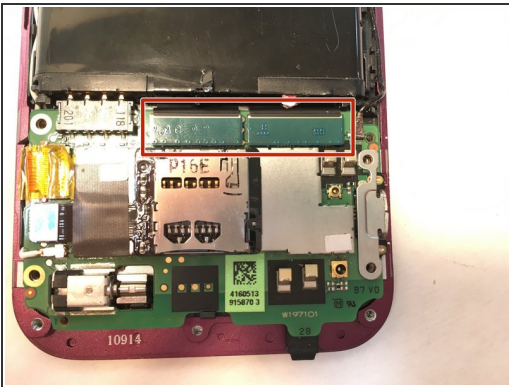
- Push off the little silver piece resting above the charging port.

## Step 7



- Disconnect the black cable on the upper right side of the motherboard.

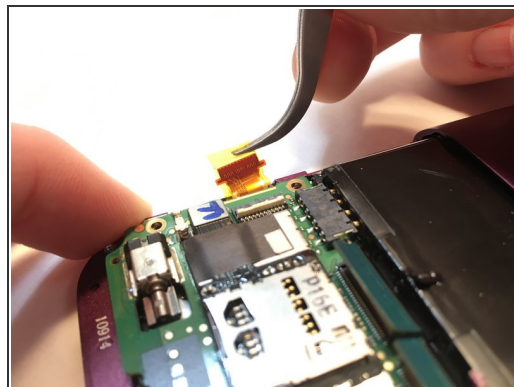
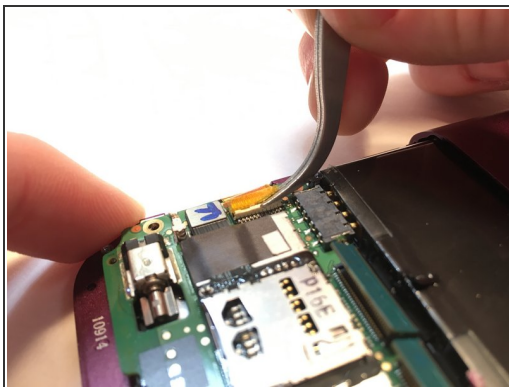
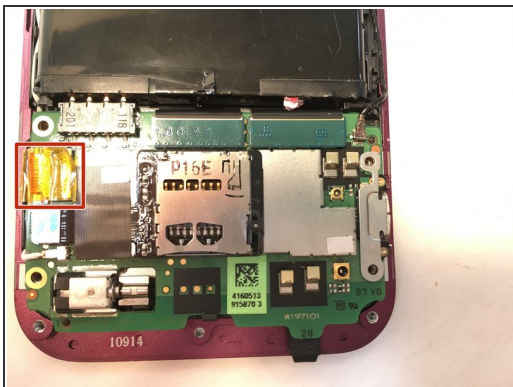
## Step 8



- Disconnect the green cables in the upper center of the motherboard.



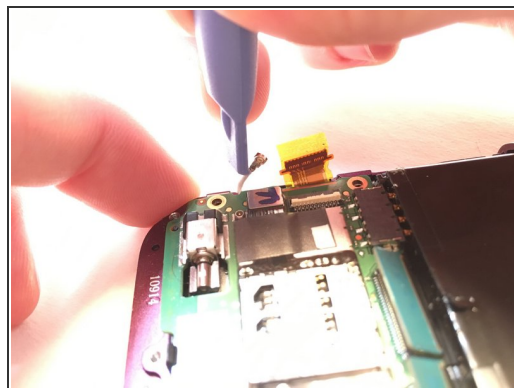
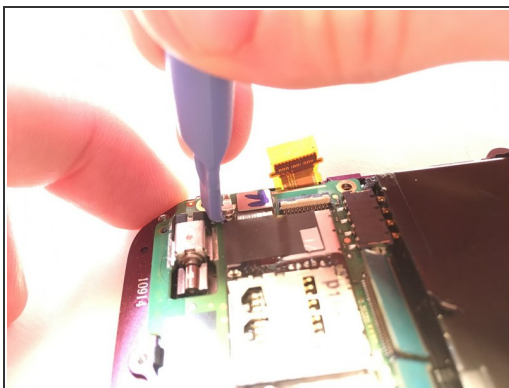
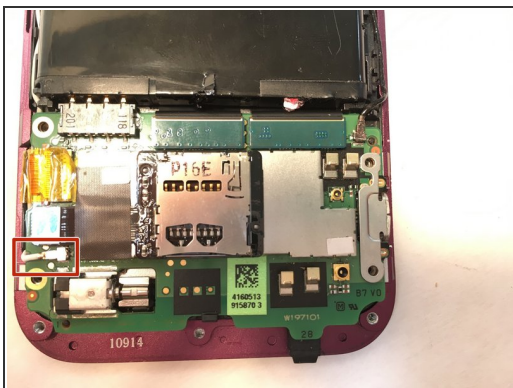
## Step 9



- Disconnect the yellow cable by gently pulling on it with tweezers.

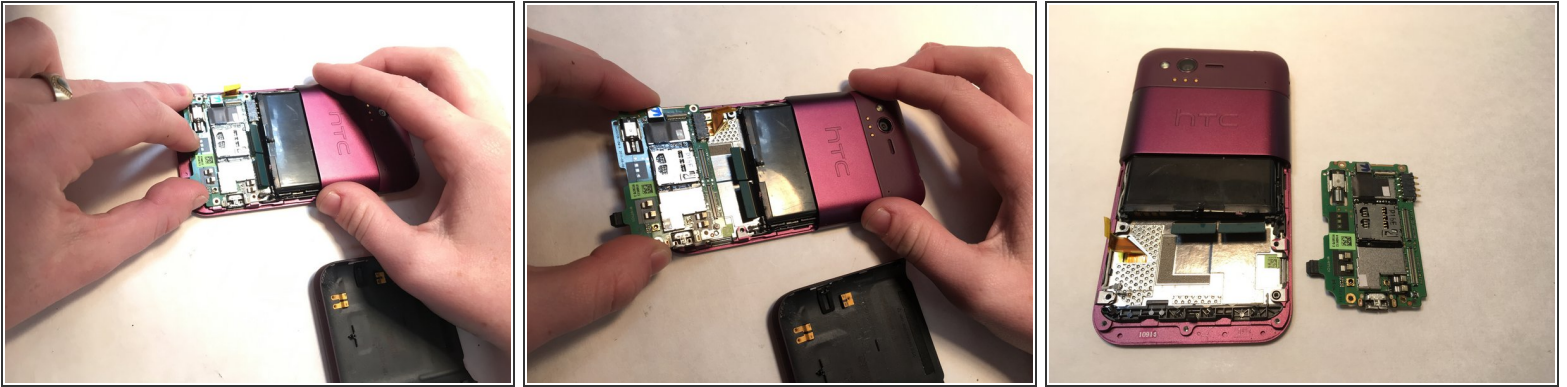
☞ When assembling, use your fingers to reconnect the wire.

## Step 10



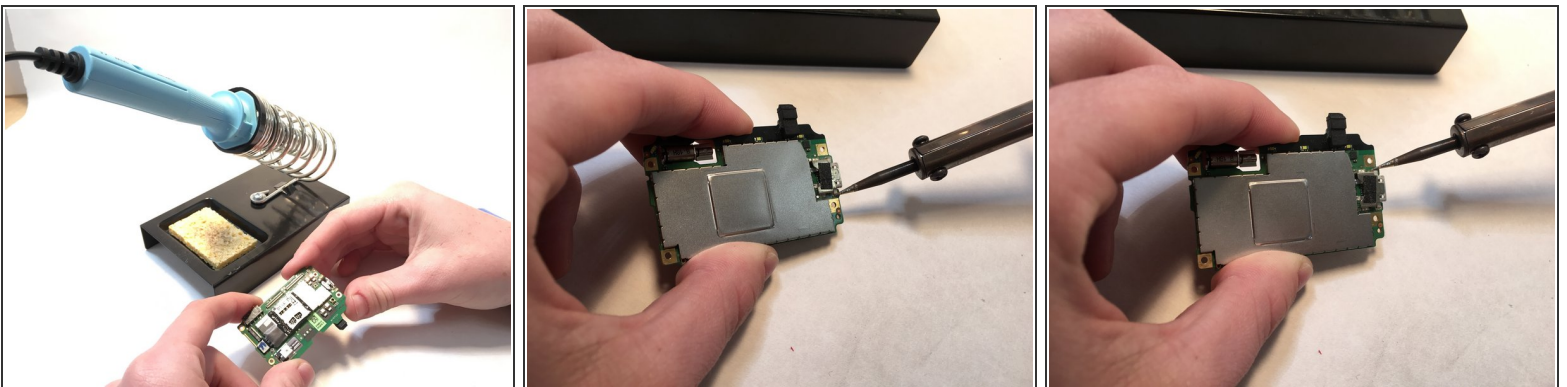
- Disconnect the white cord on the lower left side of the motherboard.

## Step 11



- Gently remove the motherboard with you hand.

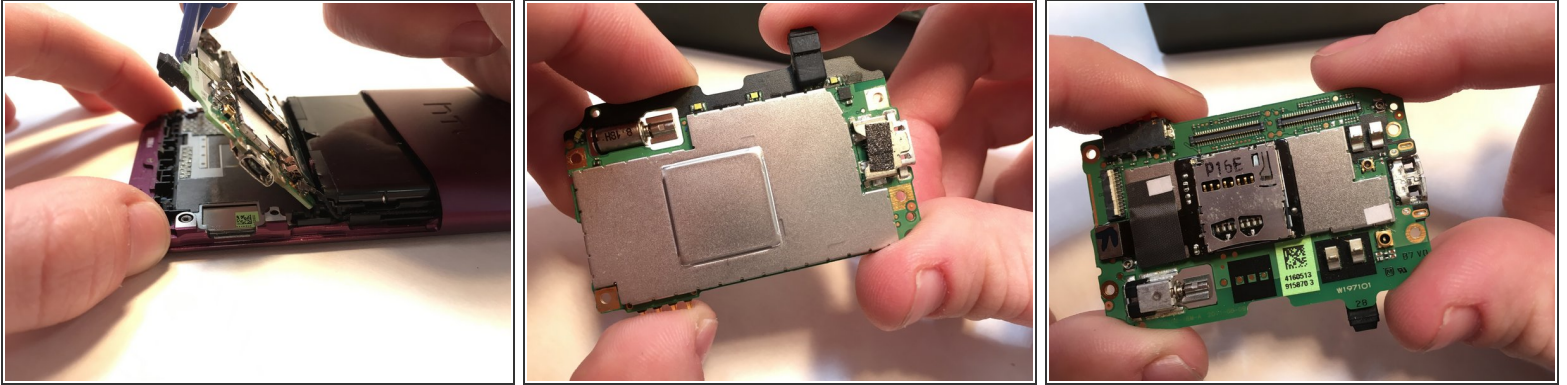
## Step 12



- Desolder and remove the charging port on the motherboard.
- Solder a new charging port onto the pads where the previous charging port had been.



## Step 13



- Follow all of these steps in reverse order to put the phone back together.

To reassemble your device, follow these instructions in reverse order.