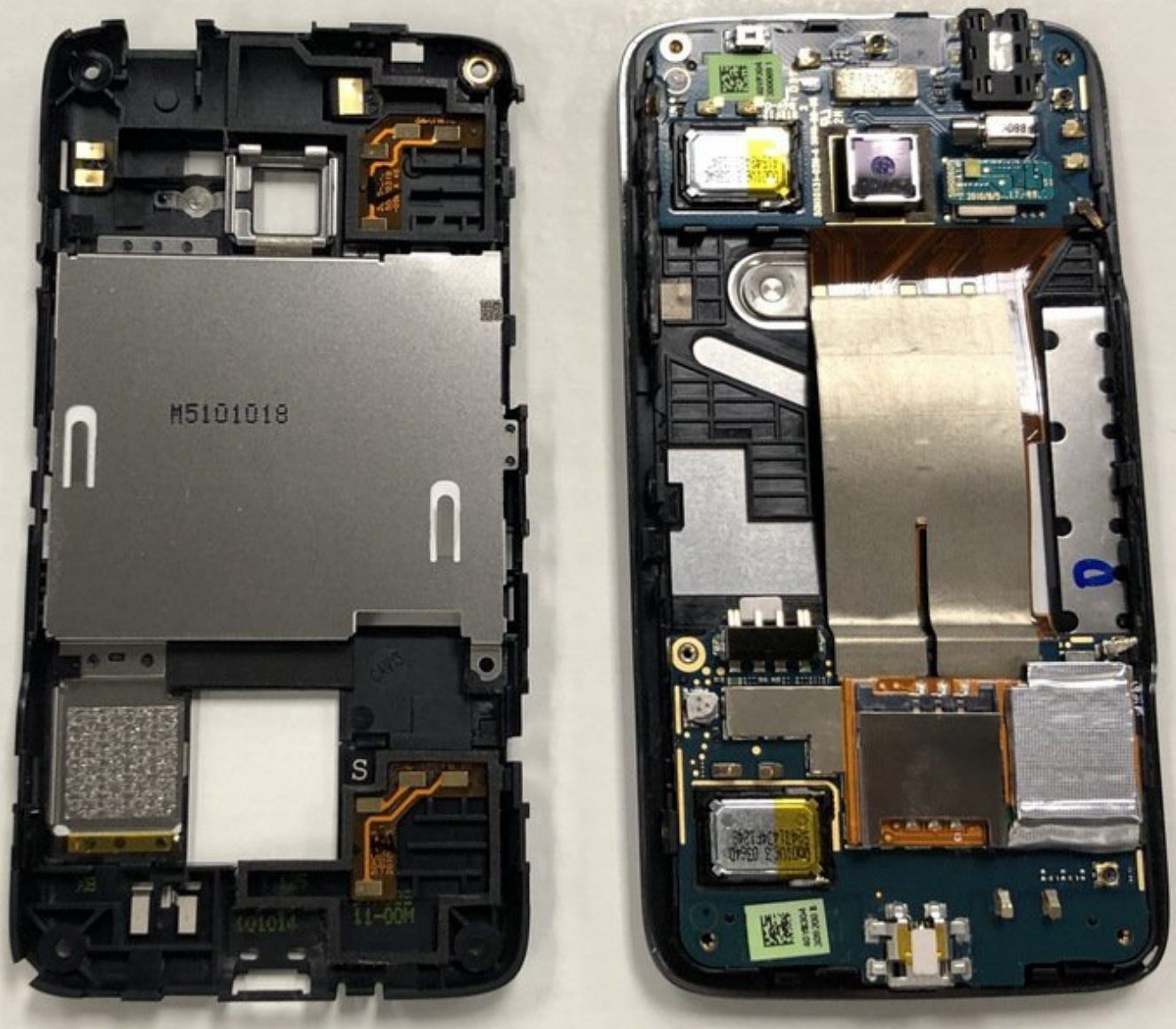




HTC Surround Sim Card Replacement

How to remove and replace the SD card in an HTC Surround.

Written By: Michael Ronning

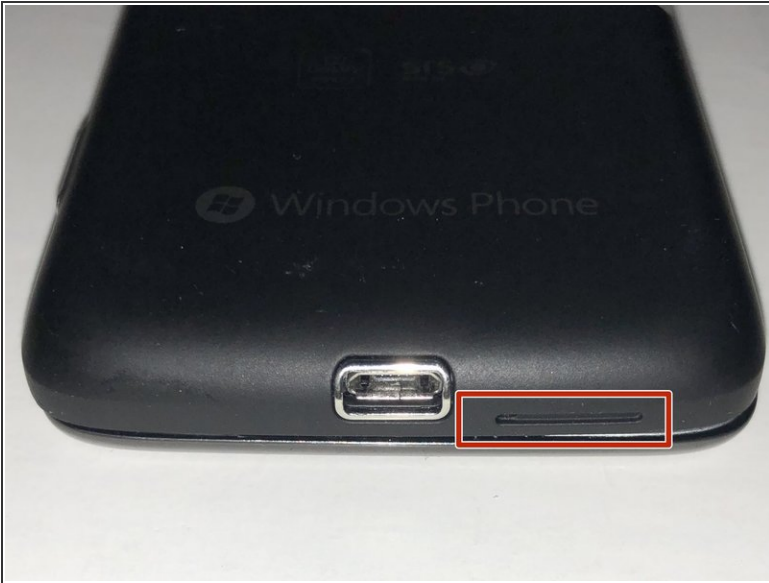




TOOLS:

- [iFixit Opening Tools](#) (1)
 - [Phillips #00 Screwdriver](#) (1)
-

Step 1 — Back Case



- Remove the back cover of the device to access the internal components of the HTC 7 Surround.
- To remove the back cover, use the circular hole to lift up the cover while holding the front of the device down.

Step 2



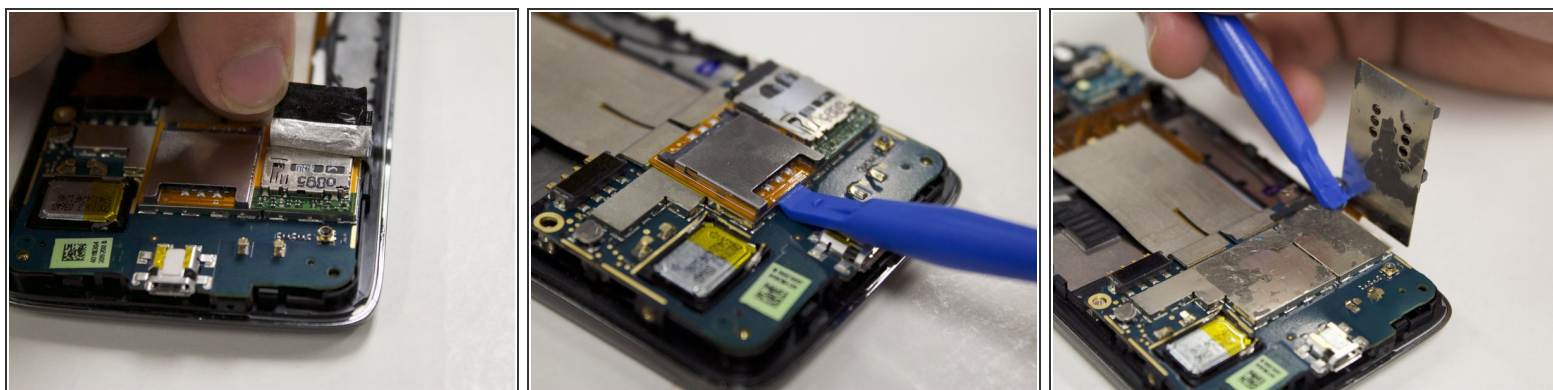
- Using a Phillips #00 screwdriver, remove the screws as directed.

Step 3



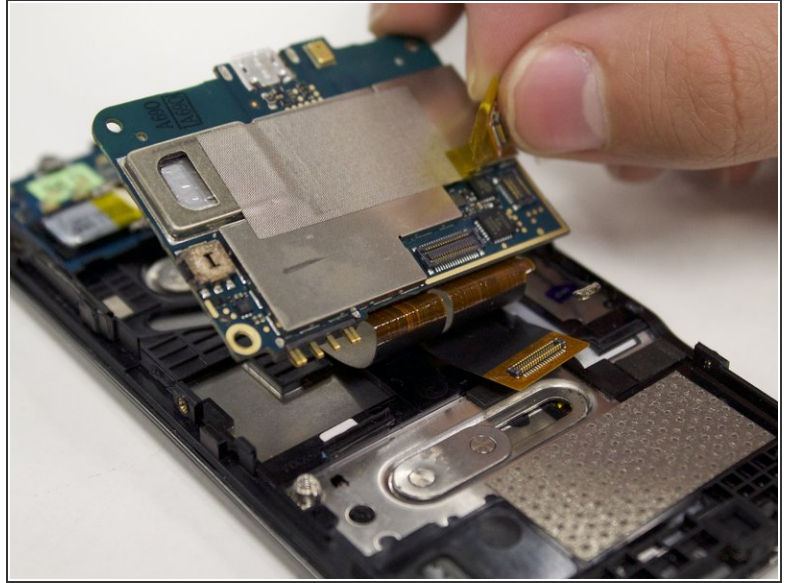
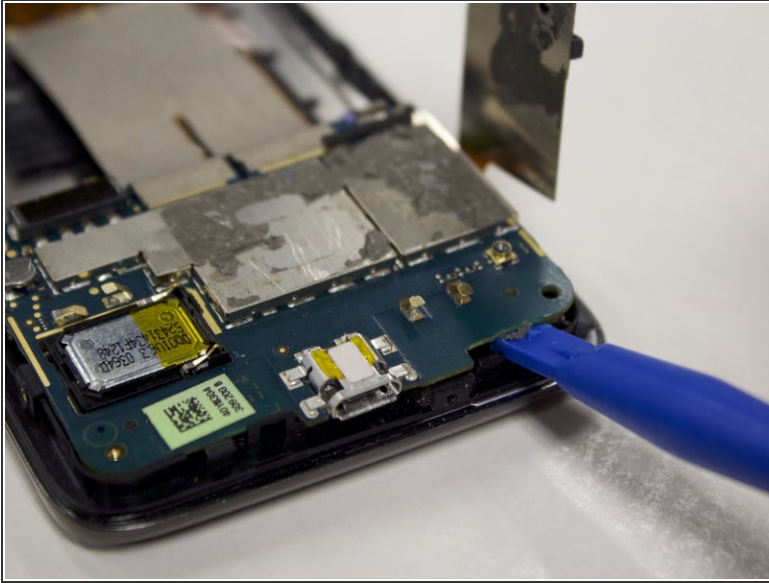
- Separate the screen and back cover with the opening tool.

Step 4 — SD Card



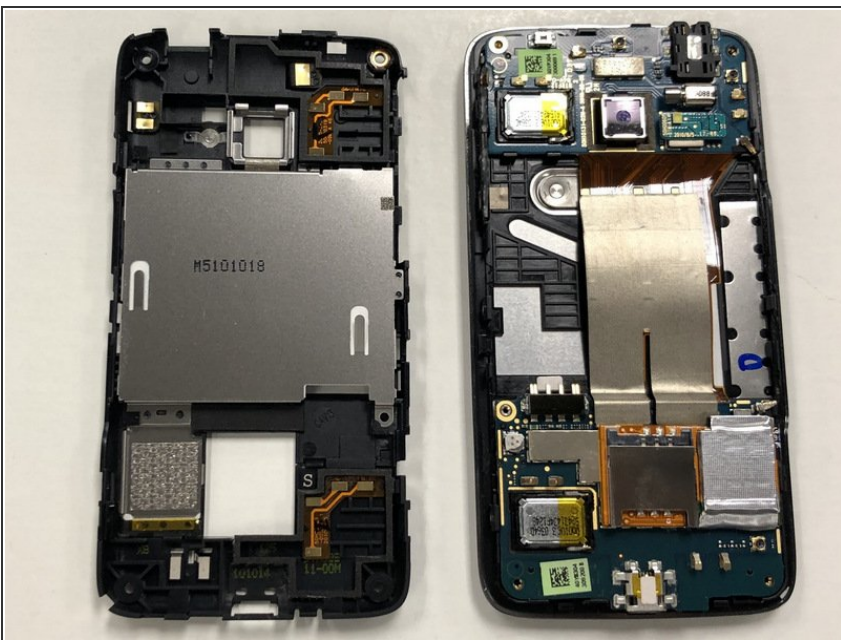
- Look at the bottom right hand corner of the device and remove the silver tape covering the SD card slot with your fingers.
- Insert the plastic opening tool directly underneath the orange surface below the SIM card until its removed from the surface of the device.

Step 5



- To get to the attachment that the SD/SIM card is attached to; insert the plastic opening tool underneath the lower motherboard until it is removed from the bottom half of the device.
- You will notice the SD/SIM card is attached to the lower motherboard by a yellow piece of tape. Remove the tape from the back of motherboard with your fingers.

Step 6 — Sim Card



- The SIM card slot will come off the device with the SD card slot and is ready to replace.

To reassemble your device, follow these instructions in reverse order.