



# HTC Thunderbolt Rear Frame Replacement

Remove the rear frame to gain access to the internals.

Written By: Brandon Younger





## TOOLS:

- [Phillips #0 Screwdriver](#) (1)
- [iFixit Opening Tools](#) (1)
- [Tweezers](#) (1)

## Step 1 — Rear Panel



- Insert the plastic opening tool into the top of the Thunderbolt near the power button.
- Gently pry up on the rear panel around the edges until it is loose.

## Step 2



- Lift and remove the rear panel.

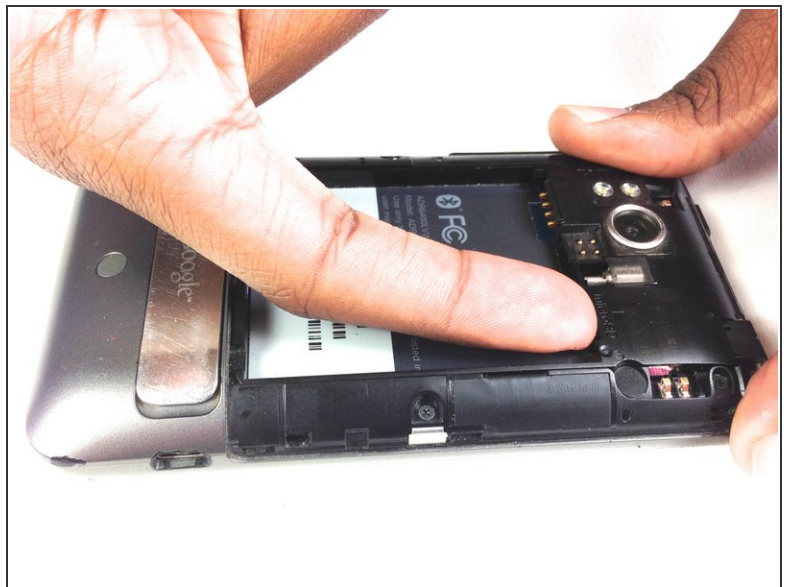


### Step 3 — Battery



- Using the plastic opening tool, lift up the battery from the bottom near the kickstand.
- Remove the battery from the inner frame.

### Step 4 — MicroSD Card



- Use your finger to push the MicroSD card in towards the top of the phone, allowing it to be released from the casing.

## Step 5



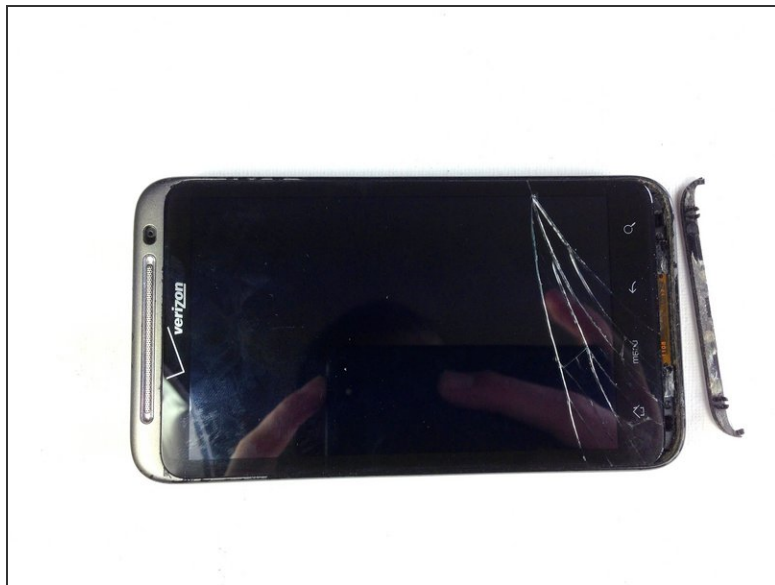
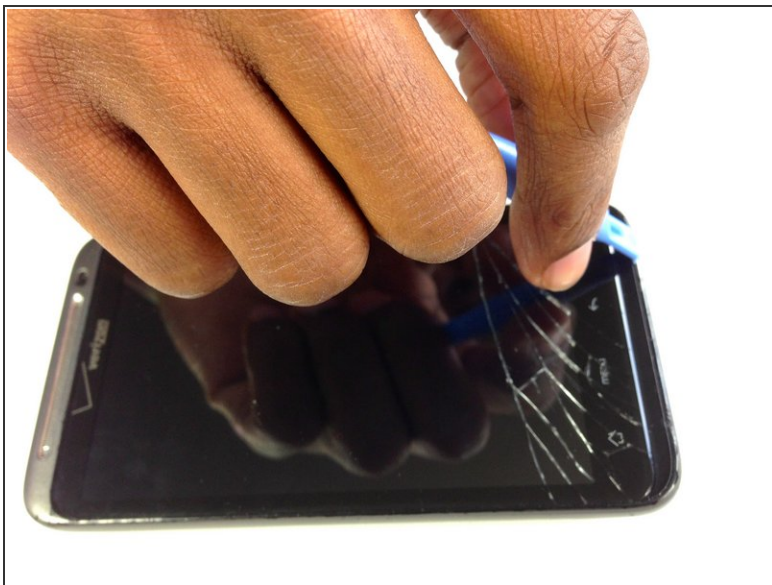
- Use tweezers to grab onto the MicroSD card and carefully remove it from the casing.


## Step 6 — Rear Frame



- Remove the six Phillips screws from the perimeter of the rear frame.
- ⚠ By removing the screw with the "void" sticker on it, your Thunderbolt will no longer be covered under warranty.

## Step 7



- Insert the plastic opening tool into the bottom of the phone underneath the soft keys.
  - Gently pry up on the plastic cover by sliding the plastic opening tool across the bottom of the phone.
  - Remove the plastic cover.
-  The plastic cover will have adhesive on it making it difficult to remove.

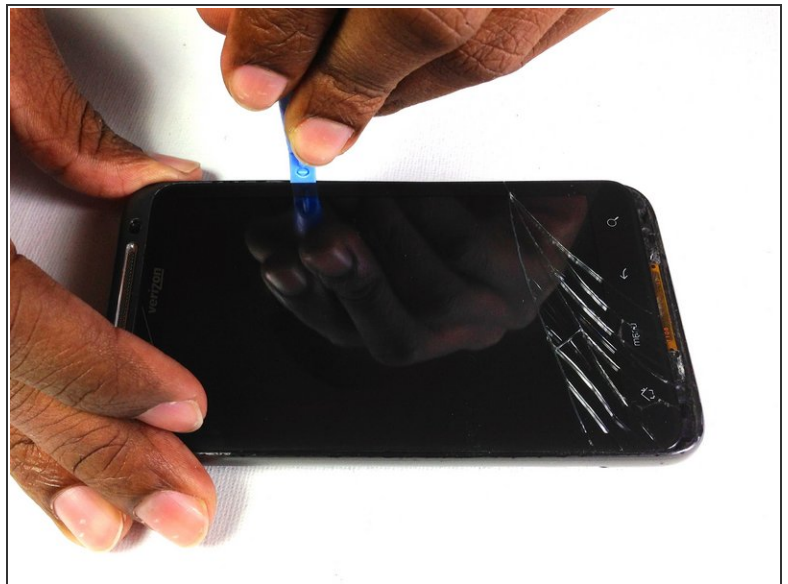
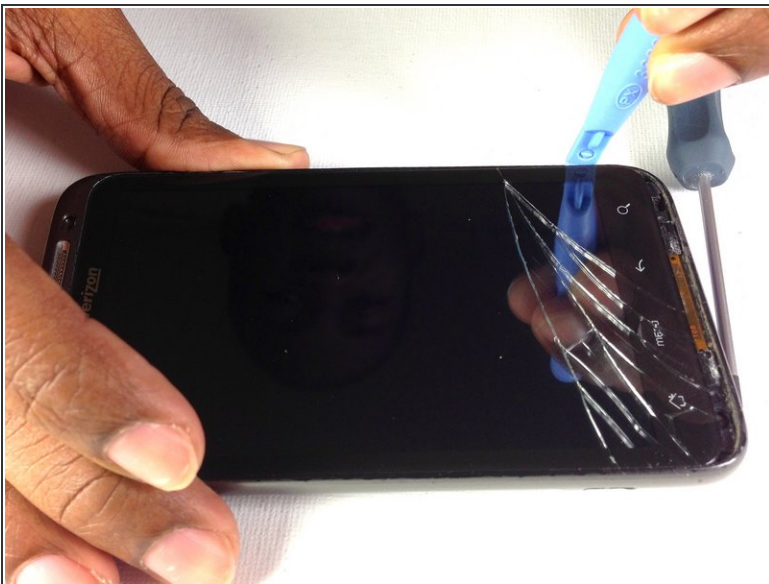


## Step 8



- Remove the two Phillips screws where the plastic cover was.

## Step 9



- Insert the plastic opening tool in between the screen and the frame on the side of the phone.
- Slowly slide the the plastic opening tool along the side of the phone until the screen begins to separate from the frame.
- Do the same for the opposite side of the phone.

## Step 10



- Carefully separate the screen and phone from the rear frame, starting from the bottom.
- Gently pull down on the phone and screen to fully separate it from the rear frame.

To reassemble your device, follow these instructions in reverse order.